



MrPEX[®]
SYSTEMS



Product Catalog

RADIANT HEATING & COOLING | PLUMBING | SNOWMELT | CONTROLS



MAY 1, 2016

ABOUT MrPEX® SYSTEMS

MrPEX® Systems is one of the leading North American system suppliers of residential and commercial radiant heating/cooling, snowmelt systems, and now offering, PEX-a domestic hot and cold water systems. We are a small but very experienced team on the fast track for growth in the USA and Canadian market. We are the exclusive providers of a unique PEX-a pipe from LK PEX AB in Sweden. As our core product, the MrPEX® PEXa Tubing, is considerably more flexible, kink-resistant and able to hold more pressure than any other Pex Tubing on the market today, plus comes with an extensive 30 year warranty!

Combined with our highly technical knowledge and dedication to customer service, it's no wonder MrPEX® Systems is one of the fastest growing radiant system suppliers in North America.



WHY MrPEX®?

MrPEX® Systems provides all components you need for a superior system, whether radiant heating/cooling, PEX-a plumbing, or snowmelt systems. This includes tubing, fittings, manifolds, controls and accessories that are matched for high performance and reliability over many years of service. When used together, these components provide trouble free installation and long-term reliability. The MrPEX® tubing and fittings meet current national standards of performance and dimensional tolerances. The system package and product offering is growing continually with an emphasis on taking advantage of sustainable energy sources whenever possible. Additionally, we also offer IDC, the state-of-the-art PC based intelligent control systems that delivers optimized comfort and maximized efficiency by coordinating HVAC, Indoor Air Quality, and Hydronic Systems in one control. IDC is also capable of energy monitoring and remote access from anywhere in the world.

WHO IS MrPEX®?

MrPEX® --Tomas Lenman --started at Wirsbo Bruks AB in Sweden as a development engineer in 1971, developing the very first PEX process ever invented. He developed many Standard Specifications for PEX Tubing in Europe and Australia. MrPEX® wrote the ASTM F 876/877 for PEX Tubing during 1982 -84. In 1982 he co-authored the book "Water and Pipes". He founded and managed Wirsbo Company (USA) 1984 -1992 and continued consulting for this group until 1996. He authored the CSA B137.5 standard for PEX Tubing in 1989. MrPEX® managed the successful start-up of Roth Industries PEX Tubing Division 1997 -2001 after which he started his own radiant floor heating company: MrPEX® Systems using PEX Tubing with exclusive distribution in North America for LK PEX AB in Sweden. The unique production process is invented by Mr. Lennart Aagren of Sweden, previously manager of Uponor Innovation AB for many years, and his second innovation of a PEX Tubing manufacturing process. No one has more knowledge and experience with PEX Tubing and Radiant Floor Heating Systems than MrPEX®.

TABLE OF CONTENTS

About MrPEX® Systems.....2
 Why MrPEX®?.....2
 Who is MrPEX®?.....2

RADIANT

Tubing.....4
 MrPEX® PEX-a Tubing with Oxygen Barrier.....4
 MrPEX® PEX-AL-PEX Tubing.....5
 PEX-AL-PEX Fittings.....6
 Press Fittings for PEX-AL-PEX Tubing.....6
 Compression Fittings for PEX-AL-PEX Tubing.....7
 Manifolds.....8
 1 1/4" Stainless Steel Manifolds for up to 5/8" PEX
 and PEX-AL-PEX Tubing, 2-12 Loops.....8
 1 1/2" Large Stainless Steel Manifolds for 5/8" and 3/4"
 PEX and PEX-AL-PEX Tubing.....9
 1 1/2" Large Brass Manifolds for 5/8" & 3/4" PEX
 and PEX-AL-PEX Tubing, 2-12 Loops.....11
 Composite Manifold.....12
 Copper Manifold Accessories.....13
 Manifold Fittings.....13
 Manifold Options.....13
 PEX Fittings.....15
 PEX Fittings and Euroconus (EK) Fittings.....15
 PPSU Fittings.....16
 PEX Press Fittings - PPSU.....16
 LF Brass Fittings.....17
 PEX Press Fittings - LF Brass.....17
 Axial Press Fittings F2080 for PEX Tubing.....18
 Controls.....19
 Zoning Controls.....19
 Snow Melt Controls.....20
 Mixing Controls.....21
 Integrated Dynamic Control.....23
 Tools & Accessories.....24
 Heat Transfer Accessories.....24
 Tube Fasteners and Organizers.....25
 Installation Tools.....28
 Spare Parts.....31
 Limited Warranty.....34
 Loop CAD.....35

PLUMBING

Tubing.....36
 MrPEX® Potable PEX-a Tubing.....36
 Composite Multiport Tee's, F2159 Fittings.....37
 Copper Multiport Tee's, F1807 Fittings with 1" Copper
 Body.....38
 Copper Manifold with Valves, LF Brass F1807 Fittings
 with 1" Copper Body.....39
 PPSU Fittings.....40
 PEX Press Fittings - PPSU.....40
 LF Brass Fittings.....42
 PEX Press Fittings - LF Brass.....42
 Accessories.....44
 Tools.....47
 Installation Tools.....47
 Press Tools.....47
 Limited Warranty.....51

TUBING

A Slinky® is suspended on elastic threads around itself. There is no reinforcement along its length. Thus making it remarkably flexible and free to move. The shape remains round. It never kinks, although the bending radius is minimal.

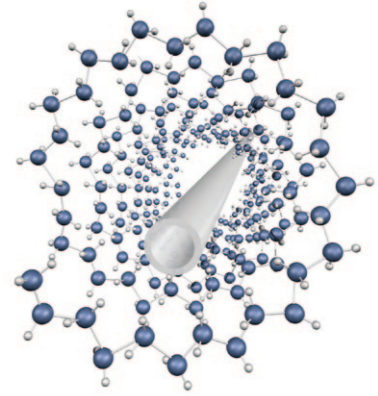
Similarly, PEX molecular chains extend around the tubing like the Slinky® string circles around itself. This makes MrPEX® Tubing extremely flexible and less likely to kink. The molecular chain is aligned to resist stress around its perimeter. It is unusually strong, resisting inside pressure.

The molecular orientation is achieved during extrusion in a very unique process. Crosslinking occurs simultaneously with the orientation. Peroxide crosslinking guarantees optimal tubing properties.

Oxygen Diffusion

MrPEX® Barrier PEX Tubing has an Oxygen Diffusion Barrier which meets the stringent requirements of the European DIN 4726 standard. This standard restricts the amount of oxygen that is allowed to permeate the pipe and affect corrodible cast iron or steel

components within the system. The standard restricts permeation to less than or equal to 0.10 g/(m³ d). This is considered to be a safe level.



MrPEX® PEX-a TUBING WITH OXYGEN BARRIER

MrPEX® Barrier PEX tubing is Cross-Linked Polyethylene (PEX-a) manufactured in accordance with ASTM F 876. Tubing is listed to ASTM F 876/877 (CSA B137.5) and ICC-PMG 1053, and also certified by NSF (NSF-rfh). MrPEX® Barrier PEX tubing is rated by the Hydrostatic Stress Board of PPI (Plastics Pipe Institute) at: 160 psi at 73.4°F; 100 psi at 180°F; 80 psi at 200°F. MrPEX® Barrier PEX tubing has an EVOH oxygen barrier that meet DIN 4726. Tubing sizes 3/8" through 3/4" also has a thin coating of PE on top of the barrier in order to reduce noise when installed in joist applications and Aluminum heat transfer plates.



PART#	TYPE	UNIT
1210060	3/8"	600 ft.
1210100	3/8"	1000 ft.
1220030	1/2"	300 ft.
1220050	1/2"	500 ft.
1220100	1/2"	1000 ft.
1220120	1/2"	1200 ft.
1220160	1/2"	1600 ft.
1230030	5/8"	300 ft.
1230033	5/8"	330 ft.
1230050	5/8"	500 ft.
1230100	5/8"	1000 ft.
1230110	5/8"	1100 ft.
1240010	3/4"	100 ft.
1240030	3/4"	300 ft.

MrPEX® PEX-a Tubing with Oxygen Barrier (cont.)

PART#	TYPE	UNIT
1240040	3/4"	400 ft.
1240050	3/4"	500 ft.
1241020	3/4"	20 ft. Sticks (200 ft.)
1250010	1"	100 ft
1250030	1"	300 ft
1251020	1"	20 ft. Sticks (200 ft.)
1260015	1 -1/4"	150 ft
1261010	1 -1/4"	20 ft. Sticks (100 ft.)
1270015	1 -1/2"	150 ft
1271010	1 -1/2"	20 ft. Sticks (100 ft.)

MrPEX® PEX-AL-PEX TUBING

MrPEX® PEX-AL-PEX tubing is a composite pipe manufactured to ASTM F 1281-2005 (CSA B137.10). MrPEX® PEX-AL-PEX tubing is certified by NSF (NSF-rfh) and temperature/pressure rated by the Hydrostatic Stress Board of PPI (Plastics Pipe Institute) in accordance with ASTM F 1281-2005 (CSA B137.10) to 160 psi at 200°F.

PART#	TYPE	UNIT
1320025	1/2"	250 ft Orange Coil
1320030	1/2"	300 ft Orange Coil
1320100	1/2"	1000 ft Orange Coil
1321080	1/2"	Tube of 40 – 20 ft Orange Sticks
1322030	1/2"	Box of 3 – 100 ft Orange Coils
1330040	5/8"	400 ft Orange Coil
1330050	5/8"	500 ft Orange Coil
1340030	3/4"	300 ft Orange Coil
1340050	3/4"	500 ft Orange Coil
1341032	3/4"	Tube of 16 – 20 ft Orange Sticks
1350010	1"	100 ft Orange Coil
1350030	1"	300 ft Orange Coil
1350050	1"	500 ft Orange Coil
1351020	1"	Tube of 10 – 20 ft Orange Sticks



PEX-AL-PEX FITTINGS

PRESS FITTINGS FOR PEX-AL-PEX TUBING

MrPEX® Press Fittings for use with MrPEX® ASTM F1281-2005 PEX-AL-PEX tubing in radiant applications. The body is made from DZR brass, double o-rings, and a stainless steel press sleeve. An accurately installed press fitting offers a fast, reliable, and permanent connection.

NOTE: Must use reamer on any PEX-AL-PEX fittings



Press Fitting Assemblies

PART#	TYPE	UNIT
2110500	1/2" PAP to EK 20	Bag of 10
2110625	5/8" PAP to EK 20	Bag of 10



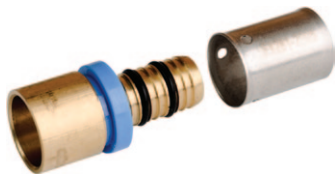
Press Couplings DZR

PART#	TYPE	UNIT
2315050	1/2" PAP to 1/2" PAP	Bag of 10
2216363	5/8" PAP to 5/8" PAP	Bag of 10
2317575	3/4" PAP to 3/4" PAP	Bag of 10
2311010	1" PAP to 1" PAP	Bag of 5



Press Transition to NPT DZR

PART#	TYPE	UNIT
2325050	1/2" PAP to 1/2" NPT	Bag of 10
2325075	1/2" PAP to 3/4" NPT	Bag of 10
2226375	5/8" PAP to 3/4" NPT	Bag of 10
2327575	3/4" PAP to 3/4" NPT	Bag of 10
2321010	1" PAP to 1" NPT	Bag of 5



Press Sweat Adapter DZR

PART#	TYPE	UNIT
2355050	1/2" PAP to 1/2" CU	Bag of 10
2355075	1/2" PAP to 3/4" CU	Bag of 10
2357575	3/4" PAP to 3/4" CU	Bag of 10
2351010	1" PAP to 1" CU	Bag of 5



Press Transition to FIP DZR

PART#	TYPE	UNIT
2335050	1/2" PAP to 1/2" FIP	Bag of 10
2337575	3/4" PAP to 3/4" FIP	Bag of 10
2331010	1" PAP to 1" FIP	Bag of 5

Press Elbow DZR

PART#	TYPE	UNIT
2365050	1/2" PAP to 1/2" PAP	Bag of 10
2367575	3/4" PAP to 3/4" PAP	Bag of 10
2361010	1" PAP to 1" PAP	Bag of 5



Press Elbow to Sweat Adapter DZR

PART#	TYPE	UNIT
2380057	1/2" PAP to 3/4" CU	Bag of 10
2380077	3/4" PAP to 3/4" CU	Bag of 10



Press Tee DZR

PART#	TYPE	UNIT
2397577	3/4" PAP x 3/4" PAP x 3/4" PAP	Bag of 10
2391011	1" PAP x 1" PAP x 1" PAP	Bag of 5



COMPRESSION FITTINGS FOR PEX-AL-PEX TUBING

MrPEX® Compression Fitting Assemblies for connection of MrPEX® PEX-AL-PEX tubing to MrPEX® Manifolds or transition fittings with EK (Eurokonus) connection. Fittings consist of a nut, insert and compression ring made of brass. Insert features double o-ring and EK (Eurokonus) seat.

PEX-AL-PEX Fitting Assemblies

PART#	TYPE	UNIT
2410500	1/2" PAP to EK 20	Bag of 10
2410625	5/8" PAP to EK 20	Bag of 10
2430750	3/4" PAP to EK 25	Bag of 10



PEX-AL-PEX Repair Coupling with Fitting Assembly

PART#	TYPE	UNIT
2421010	1" PAP to 1" PAP	Bag of 10



PEX-AL-PEX Transition with Fitting Assembly

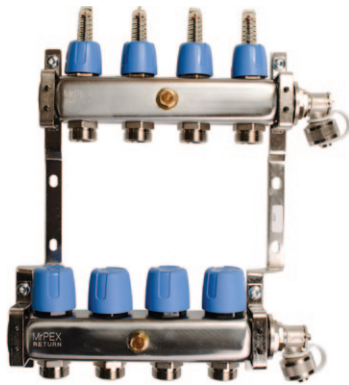
PART#	TYPE	UNIT
2445050	1/2" PAP to 1/2" NPT	Bag of 10
2446375	5/8" PAP to 3/4" NPT	Bag of 10
2447575	3/4" PAP to 3/4" NPT	Bag of 10
2441010	1" PAP to 1" NPT	Bag of 10
2456375	5/8" PAP to 3/4" FIP	Bag of 10
2457575	3/4" PAP to 3/4" FIP	Bag of 10
2461013	1" PAP to 1 1/4" CU	Bag of 10
2451010	1" PAP to 1" FIP	Bag of 10



MANIFOLDS

1 1/4" STAINLESS STEEL MANIFOLDS FOR UP TO 5/8" PEX AND PEX-AL-PEX TUBING, 2-12 LOOPS

MrPEX® 1 1/4" Stainless Steel manifolds achieves the highest level of long term corrosion resistance by using a bright annealed high-grade, Type 304, stainless steel with high nickel content. This creates a stable material structure with low levels of ferrite and magnetism. To eliminate the possibility of contact corrosion. The manifolds are fully assembled, ready for mounting. The supply side feature adjustable flow-meters for flows up to 1.45 gpm per loop, and the return side has balancing on/off valves, in accordance with DIN EN 1264-4. The adjustable flow-meter allows for a positive shut-off and the manual plastic cap on the return valve can be removed to accommodate a valve actuator #5120700 or #5120701. The return balancing valve disc is designed to enable exact adjustments of small flows while still being able to handle large flow with minimal resistance. The branch Cv value is 1.38 and the manifold body accommodates flows up to 14 gpm. The supply and return manifold bodies both have wells to accommodate optional thermometers, and a multi-function swivel End Cap allowing for Fill/Drain or Vent. Each inlet of the manifold has a G 1" thread (BSP straight metric thread) allowing for easy connections of the supply and return mains. Use only "MrPEX® Manifold Option" adapters for appropriate connection. The branches have Eurokonus (EK20) connections, and all MrPEX® EK20 compression fitting assemblies (PEX to EK20 or PEX-AL-PEX to EK20) can be used to connect tubing to the manifold.



* Shipped as shown

MrPEX® 1 1/4" Stainless Steel Manifold

PART#	TYPE	UNIT
3230200	2 Branches	Each
3230300	3 Branches	Each
3230400	4 Branches	Each
3230500	5 Branches	Each
3230600	6 Branches	Each
3230700	7 Branches	Each
3230800	8 Branches	Each
3230900	9 Branches	Each
3231000	10 Branches	Each
3231100	11 Branches	Each
3231200	12 Branches	Each

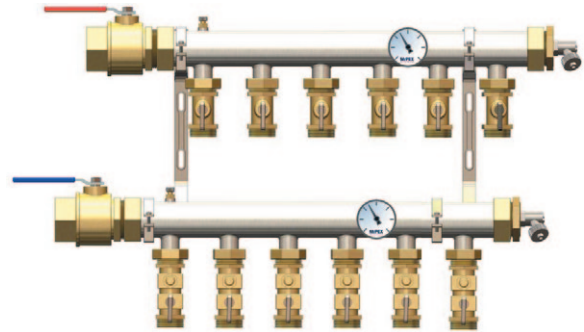


MrPEX® Manifold Thermometer

PART#	TYPE	UNIT
3230001	32F to 175F	Set of 2

1 1/2" LARGE STAINLESS STEEL MANIFOLDS FOR 5/8" AND 3/4" PEX AND PEX-AL-PEX TUBING

MrPEX® 1 1/2" Large Stainless Steel Manifolds are made from high-quality Type 304 stainless steel and offered in 3–10 loop sections. The manifold body comes with G 1 1/2" flat gasket unions for connection of inlet ball valve G 1 1/2" x 1 1/2" Female NPT and end caps. The branches comes with G 1" flat gasket unions to accommodate the on/off and balancing branch valves G 1" x EK 25 for easy connection with MrPEX® EK 25 fitting assemblies (PEX to EK25 or PEX-AL-PEX to EK25) to connect tubing to the manifold. The branch Cv value is 6 and the manifold body accommodates flows up to 25 gpm. The manifold Base Kit comes with two brackets, two 1 1/2" female NPT ball-valves and two End Caps with fill/drain.



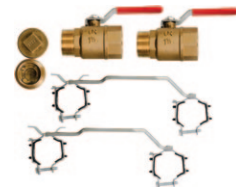
1 1/2" Stainless Steel Manifold, Supply & Return Body, G 1" Branch Union, 3" O.C.

PART#	TYPE	UNIT
3240300	3 Branches	Set of 2
3240400	4 Branches	Set of 2
3240500	5 Branches	Set of 2
3240600	6 Branches	Set of 2
3240700	7 Branches	Set of 2
3240800	8 Branches	Set of 2
3240900	9 Branches	Set of 2
3241000	10 Branches	Set of 2



Base Kit for 1 1/2" Stainless Manifold, Ball-Valves, Bracket and End Caps with Fill/Drain Valve

PART#	TYPE	UNIT
3240001	1 1/2" FIP Connection	Each



On/Off Loop Valve for 1 1/2" Stainless Steel Manifolds

PART#	TYPE	UNIT
3240002	G 1" x EK25	Box of 10



On/Off Loop Valve with Balancing for 1 1/2" Stainless Steel Manifolds

PART#	TYPE	UNIT
3240003	G 1" x EK25	Box of 10





On/Off Valve for 1 1/2" Stainless Steel Manifolds with PEX Compression Fitting

PART#	TYPE	UNIT
3241063	G1" x 5/8" PEX Comp.	Box of 10
3241075	G1" x 3/4" PEX Comp.	Box of 10



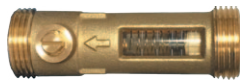
On/Off Valve, w/ balancing for 1 1/2" Stainless Steel Manifolds with PEX Compression Fitting

PART#	TYPE	UNIT
3241163	G1" x 5/8" PEX Comp.	Bag of 10
3241175	G1" x 3/4" PEX Comp.	Bag of 10



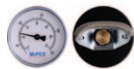
Manifold Union for 1 1/2" Stainless Steel Manifold

PART#	TYPE	UNIT
3240004	G 1 1/4" x G 1 1/4"	Set of 2



Visual Flowmeter with Balancing/Isolation Valve, 2-8 GPM

PART#	TYPE	UNIT
3240006	G1" x EK25	Each



Strap On Pipe Thermometer, 70-200°F

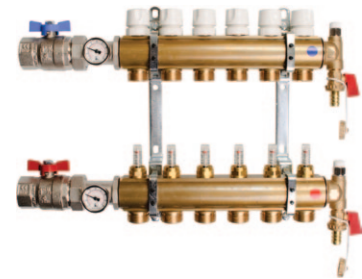
PART#	TYPE	UNIT
5240748	For Pipes 1/2"-4"	Box of 2

1 1/2" LARGE BRASS MANIFOLDS FOR 5/8" & 3/4" PEX AND PEX-AL-PEX TUBING, 2-12 LOOPS

MrPEX® 1 1/2" Large Brass Manifolds are made from high-quality extruded brass and offered in 2-12 loop fully assembled manifolds. The supply body has balancing valves with adjustable flow-meters for flows up to 2.0 gpm per loop. The return body is equipped with on/off valves. The manual plastic cap on the return valve can be removed to accommodate a valve actuator #5120700 or #5120701. Actuator valve adapter #5700010 (VA-10) needs to be purchased separately with the actuator #5120700 or #5120701. The return balancing valve disc is designed to enable exact adjustments of small flows while still being able to handle large flow with minimal resistance. The branch Cv value is 1.3 and the manifold body accommodates flows up to 20 gpm. Manifolds are mounted on brackets ready to mount. Inlets comes with a 1 1/4" female NPT union ball-valve and end caps feature vent and fill/drain. The branches have EK 25 (Eurokonus) connections, and all MrPEX® EK25 fitting assemblies (PEX to EK25 or PEX-AL-PEX to EK25) can be used to connect tubing to the manifold.

1 1/2" Manifold Valve & Balancing Flow Meter Fully Assembled

PART#	TYPE	UNIT
3310200	2 Branches	Each
3310300	3 Branches	Each
3310400	4 Branches	Each
3310500	5 Branches	Each
3310600	6 Branches	Each
3310700	7 Branches	Each
3310800	8 Branches	Each
3310900	9 Branches	Each
3311000	10 Branches	Each
3311100	11 Branches	Each
3311200	12 Branches	Each



* Shipped as shown



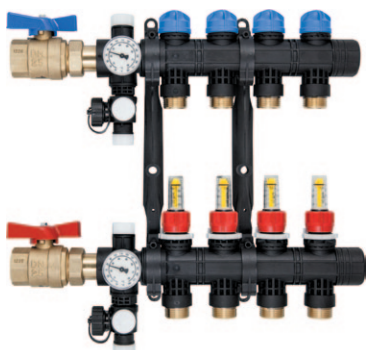
COMPOSITE MANIFOLD

MrPEX® Composite Radiant Manifold is made from a durable high performance glass filled plastic designed to withstand high temperature and pressure. The manifold exceeds the oxygen diffusion standard DIN 4726 and is completely corrosion resistant. The manifold has flow capacity of 15.4 GPM with adjustable flow-meters for flows up to 1.35 GPM per loop, and comes partially assembled as a complete kit. The branch Cv value is 1.35.

Kit includes:

- A complete supply body with positive shut-off balancing flowmeters, thermometer, a Fill/Drain valve with Vent, and a blank end cap.
- A complete return body with on/off valves for manual shut-off, thermometer, a Fill/Drain valve with Vent, and a blank end cap.
- A set of mounting brackets
- A set of 1" NPT isolation union ball-valves.

Plastic cap on the return valve can be removed to accommodate valve actuator #5120700 or #5120701 (Adapter VA 90 part #5700090 is included). The branches have Eurokonus (EK20) connections, and all MrPEX® EK20 compression fitting assemblies (PEX to EK20 or PEX-AL-PEX to EK20) can be used to connect tubing up to 5/8" to the manifold. Single, 2 loop, and 3 loop add-on supply and return manifold sections and other accessories are sold separately to allow for easy add-on.



* Shipped as kit

Composite Manifold, Valve & Flowmeter, Complete Kit

PART#	TYPE	UNIT
3810200	2 Loop	Each
3810300	3 Loop	Each
3810400	4 Loop	Each
3810500	5 Loop	Each
3810600	6 Loop	Each
3810700	7 Loop	Each
3810800	8 Loop	Each
3810900	9 Loop	Each
3811000	10 Loop	Each
3811100	11 Loop	Each
3811200	12 Loop	Each

Composite Manifold Sections, Valve & Flowmeter

PART#	TYPE	UNIT
3810001	1 Loop	Each
3810002	2 Loop	Each
3810003	3 Loop	Each



Composite Manifold Elbow Set

PART#	TYPE	UNIT
3810007	90° Supply and Return Elbows	Set of 2



COPPER MANIFOLD ACCESSORIES

MrPEX® Copper Manifold accessories offer Copper Sweat x EK (Eurokonus) mini-ball valves, allowing PEX or PEX-AL-PEX Compression fittings to be connected for pipes up to 3/4".

Mini Ball Valve

PART#	TYPE	UNIT
3465020	1/2" CU to EK 20	Box of 10
3467525	3/4" CU to EK 25	Box of 10



Mini Ball Valve with Balancing

PART#	TYPE	UNIT
3465021	1/2" CU to EK 20	Box of 10
3467526	3/4" CU to EK 25	Box of 10



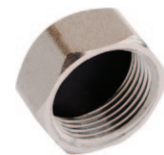
MANIFOLD FITTINGS

MANIFOLD OPTIONS

MrPEX® Manifold Options offer transitions, end caps and accessories for MrPEX® manifolds. Some of the 1 1/4" manifolds and transitions feature a 1" BSP metric straight thread using an o-ring seal. Do Not Use teflon tape or thread sealing compounds for these.

Loop End Cap

PART#	TYPE	UNIT
3610003	EK 20	Box of 2
3610004	EK 25	Box of 2



Pressure Test Kit, for 1 1/4" Brass & Stainless Steel Manifolds

PART#	TYPE	UNIT
3610005	1" BSP	Each



Pressure Test Kit

PART#	TYPE	UNIT
3700183	1" NPT	Each



Pressure Test Kit, for 1 1/2" Brass & Stainless Steel Manifolds

PART#	TYPE	UNIT
3700184	1 1/2" & 1 1/4" NPT	Each





Manifold Transition for 1 1/4" Brass and Stainless Steel

PART#	TYPE	UNIT
3620001	1" BSP to 1" and 1 1/4" CU	Bag of 2
3620010	1" BSP x 3/4" & 1" CU with Lock Nut	Bag of 2
3620002	1" BSP to 3/4" NPT	Bag of 2
3620003	1" BSP to 1" NPT	Bag of 2
3620004	1" BSP to 1" FIP	Bag of 2
3620005	1" BSP to 1" BSP (Manifold Double Nipple)	Bag of 2
3620006	1" BSP to EK 25	Bag of 2
3620007	1" BSP to EK 32	Bag of 2



Manifold Transition Ball Valve for 1 1/4" Manifolds

PART#	TYPE	UNIT
3620019	1" BSP Union to 1" Female NPT, Straight	Box of 2
3620021	1 BSP Angle Isolation Union to 1" Female NPT	Box of 2



Large Dimension PEX 'Push-Fit' Transition

PART#	TYPE	UNIT
4467575	3/4" PEX x 3/4" NPT	Each
4461010	1" PEX x 1" NPT	Each
4461313	1 1/4" PEX x 1 1/4" NPT	Each
4461515	1 1/2" PEX x 1 1/2" NPT	Each
4462020	2" PEX x 2" NPT	Each



Disconnect Tool

PART#	TYPE	UNIT
4460001	3/4"	Each
4460002	1"	Each
4460003	1 1/4"	Each
4460004	1 1/2"	Each
4460005	2"	Each

PEX FITTINGS

PEX FITTINGS AND EUROCONUS (EK) FITTINGS

MrPEX® Compression Fitting Assemblies for connection of MrPEX® Barrier PEX tubing to MrPEX® Manifolds or transition fittings with EK (Eurokonus) connection. Fittings consists of a nut, insert and compression ring made of nickel plated brass. Insert features o-ring and EK (Eurokonus) seat.

PEX Fitting Assembly (Nut Ring & Insert) for EK

PART#	TYPE	UNIT
4310375	3/8" PEX to EK 20	Bag of 10
4310500	1/2" PEX to EK 20	Bag of 10
4310625	5/8" PEX to EK 20	Bag of 10
4310750	3/4" PEX to EK 20	Bag of 10
4320625	5/8" PEX to EK 25	Bag of 10
4320750	3/4" PEX to EK 25	Bag of 10
4331000	1" PEX to EK 32	Bag of 10



Copper Sweat Transition

PART#	TYPE	UNIT
4342050	EK 20 to 1/2" & 3/4" CU	Bag of 10
4342575	EK 25 to 3/4" & 1" CU	Bag of 10
4343210	EK 32 to 1" & 1 1/4" CU	Bag of 2



NPT Transition

PART#	TYPE	UNIT
4372050	EK20 to 1/2" NPT	Bag of 10
4372575	EK25 to 3/4" NPT	Bag of 10
4372510	EK25 to 1" NPT	Bag of 2
4373210	EK32 to 1" NPT	Bag of 2



Coupling Nipple for PEX to PEX

PART#	TYPE	UNIT
4352020	EK 20 to EK 20	Bag of 10
4352525	EK 25 to EK 25	Bag of 10
4353232	EK 32 to EK 32	Bag of 10



PPSU FITTINGS

PEX PRESS FITTINGS - PPSU

MrPEX® plastic fittings are made from a blend of engineered high performance PolyPhenylSulfone (PPSU) resin to achieve a long-term durable product. These PPSU fittings are durable, light weight, corrosion free, and resistant to chlorine and other substances that may be present in today's potable water supply. The Sulfone resin has been used and refined over the past 20 years and has proven a very reliable replacement for brass and copper fittings. MrPEX® fittings are listed to ASTM F2159. MrPEX® Stainless Steel Press Sleeves and PEX Press tools are required and purchased separately.



PEX Press Sleeves - Stainless Steel

PART#	TYPE	UNIT
4000500	1/2"	Bag of 100
4000750	3/4"	Bag of 50
4001000	1"	Bag of 50



PPSU-Couplings

PART#	TYPE	UNIT
4015050	1/2" PEX x 1/2" PEX	Bag of 25
4017575	3/4" PEX x 3/4" PEX	Bag of 25
4011010	1" PEX x 1" PEX	Bag of 10



PPSU - Threaded Adapter, Male

PART#	TYPE	UNIT
4025050	1/2" PEX x 1/2" NPT	Bag of 25
4025075	1/2" PEX x 3/4" NPT	Bag of 25
4027575	3/4" x 3/4" NPT	Bag of 25
4021010	1" x 1" NPT	Bag of 10



PPSU - Elbow

PART#	TYPE	UNIT
4065050	1/2" PEX x 1/2" PEX	Bag of 25
4067575	3/4" PEX x 3/4" PEX	Bag of 25
4061010	1" PEX x 1" PEX	Bag of 10



1st, 2nd, & 3rd Measurements

PPSU - Tee

PART#	TYPE	UNIT
4097577	3/4" PEX x 3/4" PEX x 3/4" PEX	Bag of 25
4091011	1" PEX x 1" PEX x 1" PEX	Bag of 10
4091017	1" PEX x 1" PEX x 3/4" PEX	Bag of 10
4091071	1" PEX x 3/4" PEX x 1" PEX	Bag of 10
4091077	1" PEX x 3/4" PEX x 3/4" PEX	Bag of 10

LF BRASS FITTINGS

PEX PRESS FITTINGS - LF BRASS

MrPEX® Lead Free Brass fittings comply with NSF 61, which allows the product to contain no more than 0.25% lead. These fittings meet F1807. MrPEX Stainless Steel Press Sleeves and PEX Press tools are required and purchased separately.

LF Brass - Coupling

PART#	TYPE	UNIT
4115050	1/2" PEX x 1/2" PEX	Bag of 25
4117575	3/4" PEX x 3/4" PEX	Bag of 25



LF Brass - Threaded Adapter, Male

PART#	TYPE	UNIT
4125050	1/2" PEX x 1/2" NPT	Bag of 25
4125075	1/2" PEX x 3/4" NPT	Bag of 25
4121010	1" PEX x 1" NPT	Bag of 10
4121075	1" PEX x 3/4" NPT	Bag of 10



LF Brass - Sweat Adapter, Male

PART#	TYPE	UNIT
4145050	1/2" PEX x 1/2" CU	Bag of 25
4145075	1/2" PEX x 3/4" CU	Bag of 25
4146375	5/8" PEX x 3/4" CU	Bag of 25
4147510	3/4" PEX x 1" CU	Bag of 10
4147575	3/4" PEX x 3/4" CU	Bag of 25
4141010	1" PEX x 1" CU	Bag of 10



LF Brass - Sweat Adapter, Female

PART#	TYPE	UNIT
4155050	1/2" PEX x 1/2" CU	Bag of 25
4155075	1/2" PEX x 3/4" CU	Bag of 25
4157510	3/4" PEX x 1" CU	Bag of 10
4157575	3/4" PEX x 3/4" CU	Bag of 25
4151010	1" PEX x 1" CU	Bag of 10



LF Brass - Sweat Elbow, Female

PART#	TYPE	UNIT
4180155	1/2" PEX x 1/2" CU	Bag of 25
4180157	1/2" PEX x 3/4" CU	Bag of 25
4180177	3/4" PEX x 3/4" CU	Bag of 25
4180111	1" PEX x 1" CU	Bag of 10



AXIAL PRESS FITTINGS F2080 FOR PEX TUBING

MrPEX® Axial Press Fittings ASTM F2080 for use with MrPEX® Barrier PEX tubing in radiant applications. The body is made from brass and uses a brass axial press sleeve (sold separately). An accurately installed axial press fitting offers a fast, reliable, and permanent connection.



Axial Press Brass Rings

PART#	TYPE	UNIT
4500500	1/2"	Bag of 10
4500625	5/8"	Bag of 10
4500750	3/4"	Bag of 10
4501000	1"	Bag of 10



Axial Press Manifold Transitions

PART#	TYPE	UNIT
4501063	1" BSP x 5/8" PEX	Bag of 2
4501075	1" BSP x 3/4" PEX	Bag of 2
4501010	1" BSP x 1" PEX	Bag of 2



Axial Press Couplings

PART#	TYPE	UNIT
4515050	1/2" PEX x 1/2" PEX	Bag of 10
4516363	5/8" PEX x 5/8" PEX	Bag of 10
4517575	3/4" PEX x 3/4" PEX	Bag of 10
4511010	1" PEX x 1" PEX	Bag of 10



Axial Press Transition to NPT

PART#	TYPE	UNIT
4525050	1/2" PEX to 1/2" NPT	Bag of 10
4526375	5/8" PEX to 3/4" NPT	Bag of 10
4527510	3/4" PEX to 1" NPT	Bag of 10
4527575	3/4" PEX to 3/4" NPT	Bag of 10
4521010	1" PEX to 1" NPT	Bag of 10

Axial Press Transition to FIP

PART#	TYPE	UNIT
4535050	1/2" PEX to 1/2" FIP	Bag of 10
4536363	5/8" PEX to 3/4" FIP	Bag of 10
4537510	3/4" PEX to 1" FIP	Bag of 10
4537575	3/4" PEX to 3/4" FIP	Bag of 10
4531010	1" PEX to 1" FIP	Bag of 10

Axial Press Transition to CU Female Sweat

PART#	TYPE	UNIT
4555050	1/2" PEX to 1/2" CU	Bag of 10
4556375	5/8" PEX to 3/4" CU	Bag of 10
4557510	3/4" PEX to 1" CU	Bag of 10
4557575	3/4" PEX to 3/4" CU	Bag of 10
4551010	1" PEX to 1" CU	Bag of 10



Axial Press Elbow

PART#	TYPE	UNIT
4577575	3/4" PEX x 3/4" PEX	Bag of 10
4571010	1" PEX x 1" PEX	Bag of 10

CONTROLS

ZONING CONTROLS

MrPEX® Zoning Controls offer low voltage electronic zone control featuring thermostats, zone box, valve actuators, zone valves.

Digital Room Thermostats

PART#	TYPE	UNIT
5110740	Air Only	Each
5110741	Air and Floor with 10k Floor Sensor	Each
5113741	Spare Part Floor Sensor for #5110741, 10k 15 ft	Each



Valve Actuator for Valved Manifolds

PART#	TYPE	UNIT
5120700	4-wire	Each
5120701	2-wire	Each



NOTE: No adapter is needed when used with MrPEX 1 1/4" Stainless Steel Manifolds. When used with MrPEX 1 1/4" & 1 1/2" Brass Manifolds, adapter ring 5700010 (VA-10), when used with MrPEX Composite Manifold, use adapter 5700090 (VA-90 WE), all adapters need to be purchased separately. Please contact us for other adapter types.



Actuator Adapter Ring

PART#	TYPE	UNIT
5700010	For 1 1/4" & 1 1/2" Brass Manifolds (VA-10)	Each
5700090	For MrPEX Composite Manifold (VA-90 WE)	Each



Zone Valve including actuator with End Switch

PART#	TYPE	UNIT
5120711	1/2", CU Union x CU Union, Cv 2.1	Each
5120712	3/4", CU Union x CU Union, Cv 3.2	Each



Zone Valve including actuator with End Switch

PART#	TYPE	UNIT
5120721	1/2", Female NPT x Male NPT, Cv 2.1	Each
5120722	3/4", Female NPT x Male NPT, Cv 3.2	Each
5120723	1", Female NPT x Male NPT, Cv 4.0	Each
5120724	1 1/4", Female NPT x Male NPT, Cv 4.7	Each



Zone Controller

PART#	TYPE	UNIT
5130704	Simple Zone Controller, 24V, Up to 4 Zones	Each
5130706	with End-Switch and Pump Output Relay; Up to 6 Zones	Each
5130801	Single Pump Relay	Each

SNOW MELT CONTROLS

MrPEX® Snow Melt Controls offer low voltage snow melt control for 1 or 2 zone applications, Snow/Ice Detector, and sensors.



Snow Melt Controller (No sensors included)

PART#	TYPE	UNIT
5140001	1 or 2 Zone	Each

Snow Melt Moisture & Temperature Sensor

PART#	TYPE	UNIT
5140002	Surface Mount with 82' Cable	Each

Mounting Socket for Snow Melt Moisture Sensor

PART#	TYPE	UNIT
5140003	Surface Mount	Each

Snow Melt Moisture & Temperature Sensor

PART#	TYPE	UNIT
5140004	Gutter Mount with 33' Cable	Each



Outdoor Air Sensor

PART#	TYPE	UNIT
5140005	12k Wall Mount	Each



Temperature Sensors

PART#	TYPE	UNIT
5140006	12k Pipe	Each
5140007	12k Slab	Each



MIXING CONTROLS

MrPEX® Mixing Controls offer brass 3-way and 4-way mixing valves, low voltage floating action or 0-10v motors, and thermostatic 3-way tempering valve.

3-Way Thermostatic Mixing Valve (95 F - 131 F)

PART#	TYPE	UNIT
5210742	1" CU Union, Cv 4.6	Each



3-way compact mixing valve of brass

PART#	TYPE	UNIT
5250325	3/4" Copper Sweat Union, Cv 7.3	Each
5250332	1" Copper Sweat Union, Cv 13.8	Each
5250340	1 1/4" Copper Sweat Union, Cv 17.3	Each



4-way compact mixing valve of brass

PART#	TYPE	UNIT
5250425	3/4" Copper Sweat Union, Cv 7.3	Each
5250432	1" Copper Sweat Union, Cv 13.8	Each
5250440	1 1/4" Copper Sweat Union, Cv 17.3	Each



Sweat Transition for 3-Way and 4-Way Brass Mixing Valves

PART#	TYPE	UNIT
5250002	G 1" x 3/4" Sweat	Each
5250003	G 1 1/4" x 1" Sweat	Each
5250004	G 1 1/2" x 1 1/4" Sweat	Each





Valve Motor 24 VAC 90° 70 sec 5 Nm

PART#	TYPE	UNIT
5220051	Floating Action with Mounting Kit	Each
5220058	0-10 V with Mounting Kit	Each

Motor Adapter Kit

PART#	TYPE	UNIT
5220151	for ESBE Valves	Each



SmartComfort 110 – Reset Control Motor Kit, with Sensors

PART#	TYPE	UNIT
5230110	Valve Motor with built-in control	Each

SmartComfort 100 – Setpoint Control Motor Kit, with Sensor

PART#	TYPE	UNIT
5230100	Valve Motor with built-in control	Each



Outdoor Temperature Sensor, Spare Part

PART#	TYPE	UNIT
5230101	for SmartComfort 110	Each

Supply Temperature Sensor, Spare Part

PART#	TYPE	UNIT
5230102	for SmartComfort 110 & 100	Each



Remote Room Control Unit

PART#	TYPE	UNIT
5230103	for SmartComfort 110	Each

INTEGRATED DYNAMIC CONTROL

The Ultimate In Indoor Comfort, Snowmelt & Energy Control!



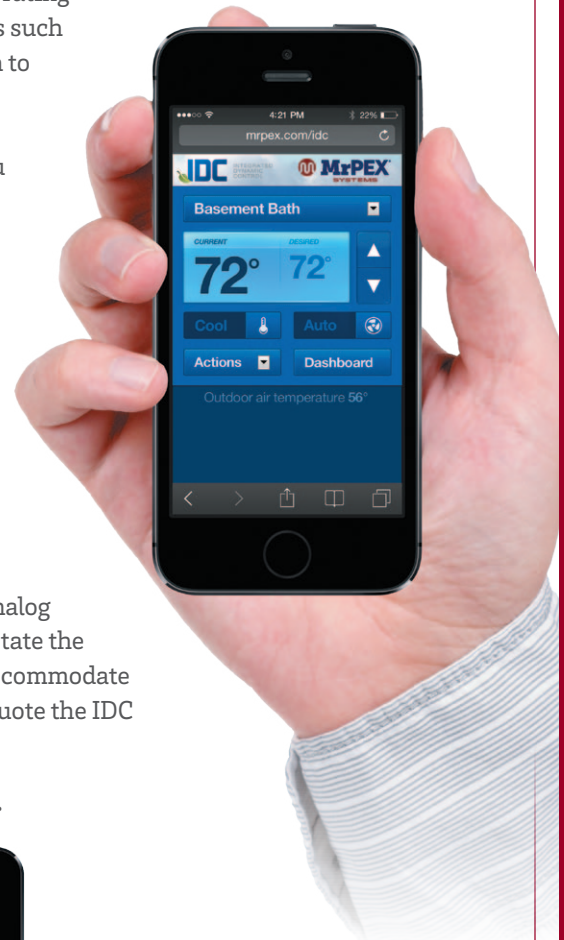
IDC is a PC based intelligent control system which delivers optimized comfort and maximized efficiency by coordinating HVAC, Indoor Air Quality, and Hydronic systems in one control. IDC is the optimal control system for incorporating

radiant floor heating and cooling systems, with renewable energy sources such as solar, heat pumps, or others. IDC also offers a new and unique approach to snowmelt control. The IDC System allows remote access from anywhere in the world for monitoring, managing, and controlling via the web using any web enabled device such as a PC, Smartphone, or tablet. IDC gives you the opportunity to do as much or as little as you demand, from a small house to large commercial building, and brings intelligent climate control technologies, previously exclusive to large-scale commercial buildings, into the residential and mid-range commercial market. Many larger homes utilize some kind of Home Automation system, so IDC has an interface that allows the homeowner to integrate selected information to be shown and accessed in the Home Automation system interface.

The system brains consists of a PC with the IDC software using the home network to communicate with a custom cabinet housing all the I/O blocks and communication units. Wired to the cabinet are all the sensors, equipment and control devices.

The IDC system is based on control points. These can be Analog Inputs, Analog Outputs, Digital Inputs, and Digital Outputs. The number of points will dictate the software package required. The control cabinet will then be matched to accommodate the sensors, equipment and control devices in the system. Therefore we quote the IDC System on a project by project basis.

Please contact MrPEX® Systems or your local rep for pricing.



TOOLS & ACCESSORIES

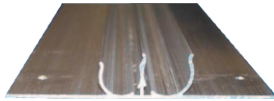
HEAT TRANSFER ACCESSORIES

MrPEX® Accessories feature extruded aluminum heat transfer plates and MrPEX® Wood Trac Flooring with omega style aluminum heat transfer plates for even heat distribution in suspended applications. RetroPanel is used for retrofit applications on top of existing concrete or sub-floor.



Omega Style Aluminum Heat Transfer Plates

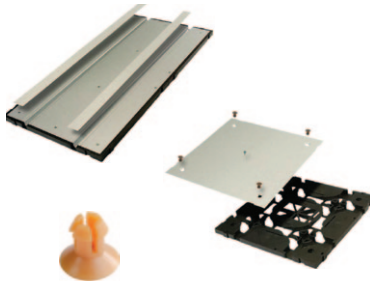
PART#	TYPE	UNIT
6110702	18" x 5" for 1/2" Tubing	Box of 100



DuoTrack Extruded Aluminum Heat Transfer Plates, Pre-drilled

PART#	TYPE	UNIT
6110733	48" x 3.75" for 3/8" or 1/2" PEX	Box of 20

NOTE: Quick estimate for 8" O.C., ((square footage x 0.9) x 1.5) / 4 = Qty of DuoTrack Plates.



RetroPanel Heat Transfer System

PART#	TYPE	UNIT
6114001	15 3/4" x 31 1/2" Straight for 1/2" PEX Tubing	Box of 10
6114002	15 3/4" x 15 3/4" for 1/2" PEX Tubing	Box of 20
6114007	Replacement Fasteners for #6114002	Bag of 4

NOTE: Estimated list price per square foot of covered area is \$8.06.

Material estimate; Floor area (sqft) x 0.9 = net floor area.

Straight Panel = Net floor area x 0.70 / 3.44 = Qty.

Return Panel = Net floor area x 0.30 / 1.72 = Qty.



Wood Trac Flooring

PART#	TYPE	UNIT
6115001	48" x 48" x 3/4" for 1/2" PEX, 8" O.C., for use with #6110702	Each

NOTE: Use 16 each of part# 6110702 for total coverage. Estimated list price per square foot of covered area is \$8.46. Special order 2-4 week lead time.

TUBE FASTENERS AND ORGANIZERS

MrPEX® Fasteners and associated accessories and tools allow for easy and fast installations of the tubing in slab or suspended applications.

Manifold Cabinets

PART#	TYPE	UNIT
6212421	20 4/5" W x 31 1/2" H x 5 1/10" D for Surface Mounting	Each
6212431	26 4/5" W x 31 1/2" H x 5 1/10" D for Surface Mounting	Each
6212451	40 1/2" W x 31 1/2" H x 5 1/10" D for Surface Mounting	Each
6213421	20 4/5" W x 27 1/5-31 1/10" H x 5 1/10" D for Recessed Mounting	Each
6213431	26 4/5" W x 27 1/5-31 1/10" H x 5 1/10" D for Recessed Mounting	Each
6213451	40 1/2" W x 27 1/5-31 1/10" H x 4 1/4" D for Recessed Mounting	Each



Surface Manifold Cabinet Selection Chart

PART#	1 1/4" STAINLESS NO BALL VALVE	1 1/4" STAINLESS WITH BALL VALVE	COMPOSITE	1 1/2" STAINLESS	1 1/2" BRASS
6212421	Up to 7 Loops	Up to 6 Loops	Up to 6 Loops	Up to 4 Loops	Up to 5 Loops
6212431	Up to 11 Loops	Up to 10 Loops	Up to 10 Loops	Up to 8 Loops	Up to 8 Loops
6412451	Up to 12 Loops	Up to 12 Loops	Up to 12 Loops	Up to 10 Loops	Up to 12 Loops

Recessed Manifold Cabinet Selection Chart

PART#	1 1/4" STAINLESS NO BALL VALVE	1 1/4" STAINLESS WITH BALL VALVE	COMPOSITE	1 1/2" STAINLESS	1 1/2" BRASS
6213421	Up to 7 Loops	Up to 6 Loops	Up to 6 Loops	Up to 4 Loops	Up to 5 Loops
6213431	Up to 11 Loops	Up to 10 Loops	Up to 10 Loops	Up to 8 Loops	Up to 8 Loops
6213451	Up to 12 Loops	Up to 12 Loops	Up to 12 Loops	Up to 10 Loops	Up to 12 Loops

Tacker Tool

PART#	TYPE	UNIT
7110223	to Mount #7110224	Each

Foam Insulation Board Tacker Staples for 3/8" to 3/4" PEX and 3/8" to 5/8" PAP Tubing

PART#	TYPE	UNIT
7110224	2"	Box of 300





Foam Insulation Board Anchor Clips for 3/8" to 5/8" PEX and PAP Tubing

PART#	TYPE	UNIT
7110229		Bag of 50



Anchor Clip Mounting Tool

PART#	TYPE	UNIT
7110232	For #7110228 & #7110229	Each



Plywood Rider Staples

PART#	TYPE	UNIT
7110235	For 3/8" to 5/8" PEX and PAP Tubing	Box of 500

Rider Staples Mounting Gun

PART#	TYPE	UNIT
7110236	For #7110235	Each



Quip Clip for Fastening PEX to Wire Mesh

PART#	TYPE	UNIT
7120225	For 1/2" PEX	Bag of 250
7120226	For 5/8" & 3/4" PEX	Bag of 250



Plastic Bend Supports

PART#	TYPE	UNIT
7130211	For 3/8" PEX Tubing	Bag of 10
7130212	For 1/2" PEX Tubing	Bag of 10
7130213	For 5/8" PEX Tubing	Bag of 10
7130214	For 3/4" PEX Tubing	Bag of 10
7130215	For 1" PEX Tubing	Bag of 10



Metal Bend Supports (For Suspended Applications)

PART#	TYPE	UNIT
7140375	for 3/8" PEX Tubing	Bag of 50
7140500	for 1/2" PEX Tubing	Bag of 50
7140625	for 5/8" PEX Tubing	Bag of 50
7140750	for 3/4" PEX Tubing	Bag of 25



Plastic Conduit Bend Supports (For Concrete Applications)

PART#	TYPE	UNIT
7153862	3/8"-5/8" Tubing	Bag of 10
7156275	5/8"-3/4" Tubing	Bag of 10

Pipe Organizer

PART#	TYPE	UNIT
6210001	For 1 1/4" Stainless Steel Manifolds, Uses Bend Support #7153862	Each



OctaRail for Mounting PEX

PART#	TYPE	UNIT
7223875	For 3/8", 1/2", 5/8", 3/4" PEX, 3.28 ft (1 Meter) each	Box of 100



NOTE: Each box of 100 will accommodate 600 ft of PEX based on a 12" O.C, 900 ft or 9" O.C, and 1200 for 6" O.C.

Plastic Zip Ties

PART#	TYPE	UNIT
7120008	8"	Bag of 1000



INSTALLATION TOOLS

MrPEX® Installation Tools features tube handling tools for PEX or PEX-AL-PEX as well as prep and press fitting tools for PEX-AL-PEX.



Compact Adjustable Tubing Uncoiler

PART#	TYPE	UNIT
8110720	Heavy Duty	Each



Pipe Straightener with Bracket

PART#	TYPE	UNIT
8110721	for 3/4" and 1" PAP Tubing	Each



Feed Eye with Bracket

PART#	TYPE	UNIT
8110722	for PEX Tubing	Each



Pipe Cutter

PART#	TYPE	UNIT
8120878	For All Sizes Up to 1 1/4" PEX and PEX-AL-PEX Tubing	Each



Simple Cutter

PART#	TYPE	UNIT
8120879	for 3/8" through 1" Tubing	Each



Fill / Transfer Pump

PART#	TYPE	UNIT
8110001	1/2 HP, 120V, 120FtHd	Each



Burring Reamer for PEX-AL-PEX

PART#	TYPE	UNIT
8210872	5/8" - 3/4" - 1"	Each
8210874	1/2" - 5/8" - 3/4"	Each
8220875	1/2" - 3/4" - 1"	Each



External Bending Spring for PEX-AL-PEX

PART#	TYPE	UNIT
8221882	1/2" PAP	Each
8220884	3/4" PAP	Each
8220885	1" PAP	Each

Manual Press Tool for PEX-AL-PEX

PART#	TYPE	UNIT
8230895	Manual Press Tool Kit for PEX-AL-PEX w/ Inserts	1/2", 5/8", 3/4", 1"
8230896	1/2" Insert for #8230895	Each
8230897	5/8" Insert for #8230895	Each
8230898	3/4" Insert for #8230895	Each
8230899	1" Insert for #8230895	Each



Battery Press Tool for PEX-AL-PEX

PART#	TYPE	UNIT
8243000	Basic Kit, No Jaws for 1/2", 5/8", 3/4" and 1" PAP	Each
8243001	Kit with 1/2", 3/4" and 1" Jaws for 1/2", 5/8", 3/4" and 1" PAP	Each
8243002	Spare Battery	Each
8243003	Spare Battery Charger	Each
8243016	1/2" PAP Press Jaw for #8243000	Each
8243020	5/8" PAP Press Jaw for #8243000	Each
8243025	3/4" PAP Press Jaw for #8243000	Each
8243032	1" PAP Press Jaw for #8243000	Each
8243050	1/2" PEX Press Jaw (F1807) for #8243000	Each
8243063	5/8" PEX Crimp Jaw (F1807) for #8243000	Each
8243075	3/4" PEX Press Jaw (F1807) for #8243000	Each
8243010	1" PEX Crimp Jaw (F1807) for #8243000	Each
8243013	1 1/4" PEX Crimp Jaw (F1807) for #8243000	Each



Manual Press Tool for PEX (F1807 & F2159)

PART#	TYPE	UNIT
8400500	1/2" Stainless Steel Sleeves	Each
8400750	3/4" Stainless Steel Sleeves	Each
8401000	1" Stainless Steel Sleeves	Each





Manual Press Tool for PEX (F1807 & F2159), Compact

PART#	TYPE	UNIT
8401050	1/2" Stainless Steel Sleeves	Each



Manual Press Tool for PEX (F1807 & F2159), Combination

PART#	TYPE	UNIT
8405075	1/2" & 3/4" Stainless Steel Sleeves	Each



Axial Press Tool

PART#	TYPE	UNIT
8320001	No Jaws	Each

Jaws for Axial Press Tool

PART#	TYPE	UNIT
8320002	4-in-1 (3/8", 1/2", 5/8", 3/4")	Each
8320375	3/8"	Each
8320500	1/2"	Each
8320625	5/8"	Each
8320750	3/4"	Each
8321000	1"	Each



Axial Press Expander Tool

PART#	TYPE	UNIT
8330001	No Heads	Each

Axial Press Expander Head

PART#	TYPE	UNIT
8330375	3/8"	Each
8330500	1/2"	Each
8330625	5/8"	Each
8330750	3/4"	Each
8331000	1"	Each

SPARE PARTS

PART#	TYPE	UNIT
2708490	O-ring for barb insert 1" PAP Press Fitting	Each
2708520	O-ring for barb insert 1/2" PAP Press fitting	Each
2708530	O-ring for barb insert 5/8" PAP Press fitting	Each
2708540	O-ring for barb insert 3/4" PAP Press fitting	Each
3710171	Manifold Bracket for 1 1/4 Brass Manifold	Each
3710172	Flow Meter Valve for 1 1/4 and 1 1/2 Brass Manifolds	Each
3710173	Plastic Valve Cap for 1 1/4 and 1 1/2 Brass Manifolds	Each
3710174	On / Off Valve for 1 1/4 and 1 1/2 Brass Manifolds	Each
3710176	Flow Meter Adjustment Tool for Brass Manifolds	Each
3710179	Plug to replace on/off and Flowmeter valve on Brass Manifolds	Each
3711390	O-RINGS for 1 BSP Manifold Transition	Each
3711391	O-ring for part # 3620010 spare part	Each
3721171	Manifold Bracket for 1 1/4 LK Stainless Steel Manifold	Each
3721172	Flow Meter Valve for 1 1/4 LK Stainless Steel Manifold w/ Blue Plastic Cap	Each
3721173	Plastic Valve Cap for LK Stainless Steel Manifold	Each
3721174	On /Off Valve for LK Stainless Steel Manifold	Each
3721175	Plastic Flowmeter Cap (Blue) for LK Stainless Manifold	Each
3721176	Manifold Loop Nipple, supply and return	Each
3721177	Black Plastic Adapter for LK on/off valve	Each
3721178	Replacement O-ring for 3721176	Each
3730171	Manifold Bracket for 1 1/2 Brass Manifold	Each
3750001	EPDM Flat Gasket for 1 1/2" Stainless Manifold Branch replacement part	Each
3750002	EPDM Flat Gasket for 1 1/2" Stainless Manifold End replacement part	Each

Spare Parts (cont.)

PART#	TYPE	UNIT
3750171	"Manifold Bracket for 1 1/2" Stainless Steel Manifold"	Set of 2
3810008	Automatic Air Vent, Replacement Part, 1 Loop	Set of 2
3810009	Composite Manifold Base Kit, Drain/Vent Module & Basic Cap	Set of 2
3810010	Drain Valve for #3810009	Set of 2
3810014	Composit Manifold Isolation Ball-Valves	Set of 2
3810015	Hose Connector for Drain Valve	Each
3810016	Composite Manifold Thermometer	Set of 2
3810170	Composit Manifold Supply Valve	Each
3810171	Composite Manifold Bracket	Set of 2
3810172	Composite Manifold Supply Flowmeter Valve	Each
3810174	Composite Manifold Return Valve	Each
4701770	O-Ring for EK 20 Insert	Each
4701780	O-Ring for EK 25 Insert	Each
4701790	O-Ring for EK 32 Insert	Each
5700010	Actuator Adapter Ring (VA-10) for #5120700 & 5120701 to Brass Manifolds	Each
5700016	Actuator Adapter Ring for #5120700 & 5120701 to Old Brass (M28 x 1.5)	Each
5700017	Actuator Adapter Ring for #5120700 & 5120701 to ICMA Manifold (M28 x 1.5)	Each
5700026	Adapter for #700 for LK Stainless	Each
5700032	Actuator Adapter Ring for #5120700 & 5120701	Each
5700033	Actuator Adapter Ring for #5120700 & 5120701 (M28 x 1.5)	Each
5700041	Actuator Adapter Ring for #5120700 & 5120701 to Embassy Manifold	Each
5700050	Actuator Adapter Ring (VA-50) for #5120700 & 5120701 to Stainless Steel Manifold	Each
5700064	Actuator Adapter Ring for #5120700 & 5120701 to TruFLOW Manifolds	Each
5700080	Actuator Adapter Ring (VA-80) for #5120700 & 5120701 to Zone Valve Body	Each
5700090	Actuator Adapter Ring (VA-90 WE) for #5120700 & 5120701 to MrPEX Composite Manifold	Each

LIMITED WARRANTY—EFFECTIVE MAY 1, 2016 VALID FOR MRPEX® RADIANT PRODUCTS

LIMITED WARRANTY

MrPEX® Systems warrants to its "clients" that the MrPEX® Tubing and Panel Heating/Cooling Components, used for Panel Heating applications, sold hereunder shall be free from defects in material and workmanship and that the components will conform to specifications stated in MrPEX® Publications. This Limited Warranty shall expire thirty (30) years for the MrPEX® tubing, five (5) years for DZR Press Fittings and two (2) years for all other components, from date of shipment by MrPEX® Systems unless otherwise specified in writing. MrPEX® Systems further warrants that products listed are compatible with Each other, but at the same time we disclaim warranty for claims related to compatibility with non-MrPEX® products. Components sold under this Limited Warranty must (1) be selected, designed, and installed according to the instructions in MrPEX® Publications using appropriate trade workmanship and according to the local building code(s), (2) remain in their originally installed location, (3) are connected to appropriate water and power supplies, (4) show no evidence of tampering, mishandling, neglect, accidental damage, modification or repair without the approval of MrPEX® Systems or damage done to the product by anyone other than MrPEX® Systems authorized personnel. MrPEX® Systems' sole obligation hereunder shall be, at its option, to issue credit, repair or replace any component or part thereof which is proved to be other than as warranted. No allowance shall be made to clients for transportation or labor charges unless such charges are authorized in writing in advance by MrPEX® Systems. Any repairs without the express written consent of MrPEX® Systems, shall render this Limited Warranty invalid. Warranty claims must be received by MrPEX® Systems within the applicable warranty period and within thirty (30) days from the time when the cause for the claim occurred or was discovered. Upon receipt of prompt notice of a warranty claim, MrPEX® Systems shall have ten (10) business days in which to determine whether it acknowledges responsibility for any asserted defects in material or workmanship and the appropriate action to be taken. This Limited Warranty and any claims arising from breach of warranty, or any other claim arising hereunder, shall be governed and construed under the laws of the State of Minnesota. No other persons than MrPEX® employees have any express or implied authority to bind MrPEX® to any agreement or warranty of any kind without the express written consent of MrPEX® Systems.

Disclaimer of Warranties:

MrPEX® systems disclaims any warranty not provided herein including the implied warranty of merchantability and implied warranty of fitness for a particular purpose. It is expressly understood that MrPEX® systems is not responsible for any consequential or other damages that may arise from using MrPEX® system components. Damage resulting from water freezing in the tubing does not constitute a defect in material or workmanship, and shall not be covered by this warranty. MrPEX® tubing may not be stored in direct sunlight for any period longer than three weeks or this limited warranty becomes invalid. MrPEX® systems disclaims any statutory or implied warranty of habitability. MrPEX® systems further disclaims any responsibility for losses, expenses, inconveniences, special, indirect, secondary, incidental or consequential damages arising from ownership or use of the articles sold hereunder. There are no warranties which extend beyond the face hereof.

General Terms and Conditions

These terms and conditions apply to all MrPEX® products. All customers are subject to credit approval before shipment of product.

Price Changes

MrPEX® reserves the right to change published prices and product availability without prior notification. Our policy is a minimum notification period of 30 days, but under unusual circumstances it may become necessary to shorten this period to meet market needs.

Terms

Terms are 30 days Net or per separate agreement with individual customer.

Minimum Order Quantity

The minimum order is \$300.00 net price. For orders less than \$300.00 net, an order processing charge of \$15.00 will be applied.

Finance Charge

A finance charge of one and one half percent (1.5%) per month will be charged on all overdue balances. This corresponds to an eighteen percent (18%) annual percentage rate (APR).

Taxes

We are required by law to charge applicable state and local taxes unless a sales tax exemption certificate has been provided.

Shipping

We will ship orders received as soon as possible. Please provide eligible orders, preferably by fax in Fine Mode, and attend to your payments and your credit situation. We will try to communicate regarding possible back-orders. Back-orders may or may not be billed separately. Note that items may sometimes be shipped from separate locations. Orders from one warehouse location to the 48 contiguous states with net price over \$4,000.00 will ship freight pre-paid. When such orders are picked up by customer, a pick-up credit may be issued. Orders will ship from closest warehouse location only when ordered products are available from there. LTL orders billed to customers shipping account will incur a processing fee of \$28.00.

Freight Claims, Shortages

If material is received short or damaged, the receiver must require the agent of the transport company to make a notation of delivery condition on the freight bill. If, or when, the goods is arrival inspected and it is found to have a damage likely caused by the freight company, the receiver must report the claim to MrPEX® Systems. We must receive such a claim within 48 hours of the receipt of goods.

LOOP CAD

MrPEX® is pre-loaded in LoopCAD®

MrPEX's radiant heating and snow melt systems are now available preloaded in LoopCAD. Not only can you design your circuit layouts, perform load calculations, and generate all hydronic data, you can also generate a complete materials list and quotation based on MrPEX's detailed product information. The MrPEX® design recommendations and data are also built in to the Add-on for you.



Below you can download LoopCAD with the MrPEX® Add-on already preloaded. Initially this will be in trial mode, giving you 30-days to evaluate the software for free. If you are downloading this as an update and you have already entered an Activation Code, the program automatically switch to the full version for you.

Download of this release is available at: www.LoopCAD.com/mrpex

For additional MrPEX® information go to www.mrpexsystems.com.



TUBING

MRPEX® POTABLE PEX-A TUBING

MrPEX® POTABLE PEX-a tubing is Cross-Linked Polyethylene (PEX-a) manufactured in accordance with ASTM F 876. Tubing is listed to ASTM F 876/F877/F2023, ASTM E84 (CSA B137.5), cNSFus-pw, NSF/ANSI-61, NSF/ANSI-14, Annex G, NSF U.P.Code PEX 5006, ICC-PMG, ANSI/AWWA 904. MrPEX® POTABLE PEX-a tubing is rated by the Hydrostatic Stress Board of PPI (Plastics Pipe Institute) at: 160 psi at 73.4°F; 100 psi at 180°F. MrPEX® POTABLE PEX-a tubing may be used with fittings that are compliant with ASTM F1807/F1960/F2080/F2098/F2159 standards.

MrPEX® POTABLE PEX-a tubing is offered in coils and straight lengths of RED, WHITE and BLUE colors to help identify hot and cold water supply.



WHITE - MrPEX POTABLE PEX-a TUBING

PART#	TYPE	UNIT
1622060	1/2"	Box of 6 - 100 ft Coils
1620030	1/2"	300 ft Coil
1620050	1/2"	500 ft Coil
1621040	1/2"	Bag of 20 - 400 ft (20 ft Sticks)
1642030	3/4"	Box of 3 - 100 ft Coil
1640030	3/4"	300 ft Coil
1641020	3/4"	Bag of 10 - 200 ft (20 ft Sticks)
1650010	1"	100 ft Coil
1650030	1"	300 ft Coil
1651010	1"	Bag of 5 - 100 ft (20 ft Sticks)



RED - MrPEX POTABLE PEX-a TUBING

PART#	TYPE	UNIT
1722060	1/2"	Box of 6 - 100 ft Coils
1720030	1/2"	300 ft Coil
1720050	1/2"	500 ft Coil
1721040	1/2"	Bag of 20 - 400 ft (20 ft Sticks)
1742030	3/4"	Box of 3 - 100 ft Coil
1740030	3/4"	300 ft Coil
1741020	3/4"	Bag of 10 - 200 ft (20 ft Sticks)
1750010	1"	100 ft Coil
1750030	1"	300 ft Coil
1751010	1"	Bag of 5 - 100 ft (20 ft Sticks)

BLUE - MrPEX POTABLE PEX-a TUBING

PART#	TYPE	UNIT
1822060	1/2"	Box of 6 - 100 ft Coils
1820030	1/2"	300 ft Coil
1820050	1/2"	500 ft Coil
1821040	1/2"	Bag of 20 - 400 ft (20 ft Sticks)
1842030	3/4"	Box of 3 - 100 ft Coil
1840030	3/4"	300 ft Coil
1841020	3/4"	Bag of 10 - 200 ft (20 ft Sticks)
1850010	1"	100 ft Coil
1850030	1"	300 ft Coil
1851010	1"	Bag of 5 - 100 ft (20 ft Sticks)



COMPOSITE MULTIPORT TEE'S, F2159 FITTINGS

MrPEX® Composite Multiport Tees are made from a blend of engineered high performance PolyPhenylSulfone (PPSU) resin to achieve a long-term durable product. These PPSU fittings are durable, light weight, corrosion free, and resistant to chlorine and other substances that may be present in today's potable water supply. The Sulfone resin has been used and refined over the past 20 years and has proven a very reliable replacement for brass and copper fittings. MrPEX® multiport tees meet ASTM F2159. MrPEX Stainless Steel Press Sleeves and PEX Press tools are required and purchased separately.

Single Side - 3/4" PEX Inlet x Closed End x 1/2" PEX

PART#	TYPE	UNIT
3011030	3 Branches	Bag of 5
3011040	4 Branches	Bag of 5
3011060	6 Branches	Bag of 5
3011080	8 Branches	Bag of 5



Single Side - 1" PEX Inlet x Closed End x 1/2" PEX

PART#	TYPE	UNIT
3012060	6 Branches	Bag of 5
3012080	8 Branches	Bag of 5



Double Side - 1" PEX Inlet x Closed End x 1/2" PEX

PART#	TYPE	UNIT
3012330	3+3 Branches	Bag of 5
3012440	4+4 Branches	Bag of 5



Single Side - 3/4" PEX Inlet x 3/4" PEX End x 1/2" PEX

PART#	TYPE	UNIT
3011031	3 Branches	Bag of 5
3011041	4 Branches	Bag of 5





Single Side - 1" PEX Inlet x 3/4" PEX End x 1/2" PEX

PART#	TYPE	UNIT
3012031	3 Branches	Bag of 5
3012041	4 Branches	Bag of 5
3012061	6 Branches	Bag of 5
3012081	8 Branches	Bag of 5



Single Side - 3/4" PEX Inlet x 3/4" PEX End x 1/2" PEX

PART#	TYPE	UNIT
3011331	3+3 Branches	Bag of 5
3011441	4+4 Branches	Bag of 5



Double Side - 1" PEX Inlet x 3/4" PEX End x 1/2" PEX

PART#	TYPE	UNIT
3012331	3+3 Branches	Bag of 5
3012441	4+4 Branches	Bag of 5

COPPER MULTIPOINT TEE'S, F1807 FITTINGS WITH 1" COPPER BODY

MrPEX® Copper Manifolds are made from type L copper. The No Lead product materials comply with NSF 61, which allows the product to contain no more than 0.25% lead. These manifolds meet F1807. MrPEX Stainless Steel Press Sleeves and PEX Press tools are required and purchased separately.



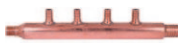
Single Side - 3/4" PEX Inlet x Closed End x 1/2" PEX

PART#	TYPE	UNIT
3021030	3 Branches	Bag of 5
3021040	4 Branches	Bag of 5
3021060	6 Branches	Bag of 5
3021080	8 Branches	Bag of 5



Single Side - 1" PEX Inlet x Closed End x 1/2" PEX

PART#	TYPE	UNIT
3022060	6 Branches	Bag of 5
3022080	8 Branches	Bag of 5

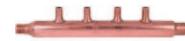


Single Side - 3/4" PEX Inlet x 3/4" PEX End x 1/2" PEX

PART#	TYPE	UNIT
3021031	3 Branches	Bag of 5
3021041	4 Branches	Bag of 5

Single Side - 1" PEX Inlet x 3/4" PEX End x 1/2" PEX

PART#	TYPE	UNIT
3022041	4 Branches	Bag of 5
3022061	6 Branches	Bag of 5
3022081	8 Branches	Bag of 5

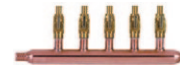


COPPER MANIFOLD WITH VALVES, LF BRASS F1807 FITTINGS WITH 1" COPPER BODY

MrPEX® Copper Manifolds are made from type L copper and Lead Free Brass. The No Lead product materials comply with NSF 61, which allows the product to contain no more than 0.25% lead. These manifolds meet F1807. MrPEX Stainless Steel Press Sleeves and PEX Press tools are required and purchased separately.

Single Side - 3/4" PEX Inlet x Closed End x 1/2" PEX

PART#	TYPE	UNIT
3031040	4 Branches	Each
3031050	5 Branches	Each
3031060	6 Branches	Each



Single Side - 1" Sweat Right Inlet x Closed End x 1/2" PEX Valves

PART#	TYPE	UNIT
3042080	8 Branches	Each
3042100	10 Branches	Each
3042120	12 Branches	Each



Single Side - 1" Sweat Left Inlet x Closed End x 1/2" PEX Valves

PART#	TYPE	UNIT
3043080	8 Branches	Each
3043100	10 Branches	Each
3043120	12 Branches	Each



PPSU FITTINGS

PEX PRESS FITTINGS - PPSU

MrPEX® plastic fittings are made from a blend of engineered high performance PolyPhenylSulfone (PPSU) resin to achieve a long-term durable product. These PPSU fittings are durable, light weight, corrosion free, and resistant to chlorine and other substances that may be present in today's potable water supply. The Sulfone resin has been used and refined over the past 20 years and has proven a very reliable replacement for brass and copper fittings. MrPEX® fittings are listed to ASTM F2159. MrPEX® Stainless Steel Press Sleeves and PEX Press tools are required and purchased separately.



PEX Press Sleeves - Stainless Steel

PART#	TYPE	UNIT
4000500	1/2"	Bag of 100
4000750	3/4"	Bag of 50
4001000	1"	Bag of 50



PPSU-Couplings

PART#	TYPE	UNIT
4015050	1/2" PEX x 1/2" PEX	Bag of 25
4017550	3/4" PEX x 1/2" PEX	Bag of 25
4017575	3/4" PEX x 3/4" PEX	Bag of 25
4011010	1" PEX x 1" PEX	Bag of 10
4011075	1" PEX x 3/4" PEX	Bag of 10



PPSU - Threaded Adapter, Male

PART#	TYPE	UNIT
4025050	1/2" PEX x 1/2" NPT	Bag of 25
4025075	1/2" PEX x 3/4" NPT	Bag of 25
4027550	3/4" x 1/2" NPT	Bag of 25
4027575	3/4" x 3/4" NPT	Bag of 25
4021010	1" x 1" NPT	Bag of 10



PPSU - Threaded Adapter, Female

PART#	TYPE	UNIT
4035050	1/2" PEX x 1/2" NPT	Bag of 25
4037575	3/4" PEX x 3/4" NPT	Bag of 25
4031010	1" PEX x 1" NPT	Bag of 10



PPSU - Plug

PART#	TYPE	UNIT
4040500	1/2"	Bag of 25
4040750	3/4"	Bag of 25
4041000	1"	Bag of 10

PPSU - Elbow

PART#	TYPE	UNIT
4065050	1/2" PEX x 1/2" PEX	Bag of 25
4067550	3/4" PEX x 1/2" PEX	Bag of 25
4067575	3/4" PEX x 3/4" PEX	Bag of 25
4061010	1" PEX x 1" PEX	Bag of 10



PPSU - Swivel Adapter

PART#	TYPE	UNIT
4075151	1/2" PEX x 1/2" NPT, straight	Bag of 25
4075252	1/2" PEX x 1/2" NPT, elbow	Bag of 25



PPSU - Threaded Elbow

PART#	TYPE	UNIT
4075038	1/2" PEX x 3/8" NPT, Male	Bag of 25
4075050	1/2" PEX x 1/2" NPT, Female	Bag of 25
4077550	3/4" PEX x 1/2" NPT, male	Bag of 25
4077575	3/4" PEX x 3/4" NPT, female	Bag of 25



PPSU - Tee

PART#	TYPE	UNIT
4095055	1/2" PEX x 1/2" PEX x 1/2" PEX	Bag of 25
4095057	1/2" PEX x 1/2" PEX x 3/4" PEX	Bag of 25
4097555	3/4" PEX x 1/2" PEX x 1/2" PEX	Bag of 25
4097557	3/4" PEX x 1/2" PEX x 3/4" PEX	Bag of 25
4097571	3/4" PEX x 3/4" PEX x 1" PEX	Bag of 10
4097575	3/4" PEX x 3/4" PEX x 1/2" PEX	Bag of 25
4097577	3/4" PEX x 3/4" PEX x 3/4" PEX	Bag of 25
4091011	1" PEX x 1" PEX x 1" PEX	Bag of 10
4091015	1" PEX x 1" PEX x 1/2" PEX	Bag of 10
4091017	1" PEX x 1" PEX x 3/4" PEX	Bag of 10
4091071	1" PEX x 3/4" PEX x 1" PEX	Bag of 10
4091077	1" PEX x 3/4" PEX x 3/4" PEX	Bag of 10



1st, 2nd, & 3rd Measurements

LF BRASS FITTINGS

PEX PRESS FITTINGS - LF BRASS

MrPEX® Lead Free Brass fittings comply with NSF 61, which allows the product to contain no more than 0.25% lead. These fittings meet F1807. MrPEX Stainless Steel Press Sleeves and PEX Press tools are required and purchased separately.



PEX Press Sleeves - Stainless Steel

PART#	TYPE	UNIT
4000500	1/2"	Bag of 100
4000750	3/4"	Bag of 50
4001000	1"	Bag of 50



LF Brass - Plug

PART#	TYPE	UNIT
4100500	1/2" PEX	Bag of 25
4100750	3/4" PEX	Bag of 25
4101000	1" PEX	Bag of 10



LF Brass - Coupling

PART#	TYPE	UNIT
4115050	1/2" PEX x 1/2" PEX	Bag of 25
4116363	5/8" PEX x 5/8" PEX	Bag of 25
4117550	3/4" PEX x 1/2" PEX	Bag of 25
4117575	3/4" PEX x 3/4" PEX	Bag of 25
4111010	1" PEX x 1" PEX	Bag of 10
4111075	1" PEX x 3/4" PEX	Bag of 10



LF Brass - Threaded Adapter, Male

PART#	TYPE	UNIT
4125050	1/2" PEX x 1/2" NPT	Bag of 25
4125075	1/2" PEX x 3/4" NPT	Bag of 25
4126375	5/8" PEX x 3/4" NPT	Bag of 25
4127510	3/4" PEX x 1" NPT	Bag of 10
4127575	3/4" PEX x 3/4" NPT	Bag of 25
4121010	1" PEX x 1" NPT	Bag of 10
4121075	1" PEX x 3/4" NPT	Bag of 10

LF Brass - Threaded Adapter, Female

PART#	TYPE	UNIT
4135050	1/2" PEX x 1/2" NPT	Bag of 25
4135075	1/2" PEX x 3/4" NPT	Bag of 25
4137510	3/4" PEX x 1" NPT	Bag of 10
4137575	3/4" PEX x 3/4" NPT	Bag of 25
4131010	1" PEX x 1" NPT	Bag of 10



LF Brass - Sweat Adapter, Male

PART#	TYPE	UNIT
4145050	1/2" PEX x 1/2" CU	Bag of 25
4145075	1/2" PEX x 3/4" CU	Bag of 25
4146375	5/8" PEX x 3/4" CU	Bag of 25
4147510	3/4" PEX x 1" CU	Bag of 10
4147575	3/4" PEX x 3/4" CU	Bag of 25
4141010	1" PEX x 1" CU	Bag of 10



LF Brass - Sweat Adapter, Female

PART#	TYPE	UNIT
4155050	1/2" PEX x 1/2" CU	Bag of 25
4155075	1/2" PEX x 3/4" CU	Bag of 25
4157510	3/4" PEX x 1" CU	Bag of 10
4157575	3/4" PEX x 3/4" CU	Bag of 25
4151010	1" PEX x 1" CU	Bag of 10



LF Brass - Elbow

PART#	TYPE	UNIT
4165050	1/2" PEX x 1/2" PEX	Bag of 25
4167575	3/4" PEX x 3/4" PEX	Bag of 25
4161010	1" PEX x 1" PEX	Bag of 10



LF Brass - Threaded Elbow, Male

PART#	TYPE	UNIT
4170055	1/2" PEX x 1/2" NPT	Bag of 25
4170057	1/2" PEX x 3/4" NPT	Bag of 25
4170071	3/4" PEX x 1" NPT	Bag of 10
4170077	3/4" PEX x 3/4" NPT	Bag of 25



LF Brass - Sweat Elbow, Male

PART#	TYPE	UNIT
4180055	1/2" PEX x 1/2" CU	Bag of 25
4180057	1/2" PEX x 3/4" CU	Bag of 25
4180077	3/4" PEX x 3/4" CU	Bag of 25





LF Brass - Sweat Elbow, Female

PART#	TYPE	UNIT
4180155	1/2" PEX x 1/2" CU	Bag of 25
4180157	1/2" PEX x 3/4" CU	Bag of 25
4180177	3/4" PEX x 3/4" CU	Bag of 25
4180111	1" PEX x 1" CU	Bag of 10



1st, 2nd, & 3rd Measurements

LF Brass - Tee

PART#	TYPE	UNIT
4195055	1/2" PEX x 1/2" PEX x 1/2" PEX	Bag of 25
4195057	1/2" PEX x 1/2" PEX x 3/4" PEX	Bag of 25
4197555	3/4" PEX x 1/2" PEX x 1/2" PEX	Bag of 25
4197557	3/4" PEX x 1/2" PEX x 3/4" PEX	Bag of 25
4197575	3/4" PEX x 3/4" PEX x 1/2" PEX	Bag of 25
4197577	3/4" PEX x 3/4" PEX x 3/4" PEX	Bag of 25
4191011	1" PEX x 1" PEX x 1" PEX	Bag of 10
4191015	1" PEX x 1" PEX x 1/2" PEX	Bag of 10
4191017	1" PEX x 1" PEX x 3/4" PEX	Bag of 10
4191051	1" PEX x 1/2" PEX x 1" PEX	Bag of 10
4191057	1" PEX x 1/2" PEX x 3/4" PEX	Bag of 10
4191071	1" PEX x 3/4" PEX x 1" PEX	Bag of 10
4191077	1" PEX x 3/4" PEX x 3/4" PEX	Bag of 10

ACCESSORIES



LF Brass - Inline Ball Valve, full port

PART#	TYPE	UNIT
4100050	1/2" PEX x 1/2" PEX	Box of 10
4100075	3/4" PEX x 3/4" PEX	Box of 8
4100010	1" PEX x 1" PEX	Box of 4



LF Brass - Tub Ell, 6" x 2 1/4"

PART#	TYPE	UNIT
4100057	1/2" PEX	Bag of 50



Tub/Shower Elbow

PART#	TYPE	UNIT
4100155	1/2" PEX x 1/2" FIP	Bag of 50



Chrome Tube Sleeve

PART#	TYPE	UNIT
4108104	1/2"	Bag of 10

Escution, Chrome

PART#	TYPE	UNIT
4108105	1/2"	Box of 25
4108106	3/4"	Box of 25



Threaded Swivel Adapter, Straight, Plastic Nut

PART#	TYPE	UNIT
4108107	1/2" PEX x 1/2" FIP	Box of 25



LF Brass - Stub Out Straight, 8", closed end

PART#	TYPE	UNIT
4109001	1/2" PEX	Bag of 100



LF Brass - Stub Out Elbow, 3 1/2" x 8", closed end

PART#	TYPE	UNIT
4109002	1/2" PEX	Bag of 50



LF Brass - Drop Ear Stub Out Elbow, 3 1/2" x 8", closed end

PART#	TYPE	UNIT
4109003	1/2" PEX	Bag of 25



LF Brass - Angle Stop

PART#	TYPE	UNIT
4109053	1/2" PEX x 3/8" Comp.	Box of 24



LF Brass - Straight Stop

PART#	TYPE	UNIT
4109153	1/2" PEX x 3/8" Comp.	Box of 24



LF Brass - Water Heater Flex Connector

PART#	TYPE	UNIT
4109277	1 3/4" PEX x 3/4" FIP Swivel	Box of 10



LF Brass - Water Heater Flex Connector, w/ ball valve

PART#	TYPE	UNIT
4109278	3/4" PEX x 3/4" FIP Swivel	Box of 25



LF Brass - Washing Machine Box

PART#	TYPE	UNIT
4109301	1/2"	Each



LF Brass - Ice Maker Box

PART#	TYPE	UNIT
4109302	1/2" PEX x 1/4" Comp.	Each





Tube Talon

PART#	TYPE	UNIT
4101050	1/2"	Bag of 100
4101075	3/4"	Bag of 100
4101010	1"	Bag of 50



Stub Out Bracket, galvanized steel

PART#	TYPE	UNIT
4108002	2" x 20"	Box of 50



Grommet for Galvanized Bracket or Metal Stud

PART#	TYPE	UNIT
4108050	1/2"	Bag of 100
4108075	3/4"	Bag of 100
4108010	1"	Bag of 25



Nail Guard, 18ga, self nailing plates

PART#	TYPE	UNIT
4108101	1.5" x 3", single plate	Box of 100
4108102	3" x 5", double plate	Box of 100
4108103	1.5" x 5"	Box of 100



Metal Drop Ear Bend Support

PART#	TYPE	UNIT
7140501	1/2"	Bag of 25



LF Brass - Drop Ear Elbow

PART#	TYPE	UNIT
4100055	1/2" PEX x 1/2" FIP	Bag of 10
4100077	3/4" PEX x 3/4" FIP	Bag of 10
4100157	1/2" PEX x 3/4" FIP	Bag of 10

TOOLS

INSTALLATION TOOLS

MrPEX® Installation Tools features tube handling tools for PEX or PEX-AL-PEX as well as prep and press fitting tools for PEX-AL-PEX.

Compact Adjustable Tubing Uncoiler

PART#	TYPE	UNIT
8110720	Heavy Duty	Each



Pipe Straightener with Bracket

PART#	TYPE	UNIT
8110721	for 3/4" and 1" PEX Tubing	Each



Feed Eye with Bracket

PART#	TYPE	UNIT
8110722	for PEX Tubing	Each
8110723	for #8110721 & 8110722	Each



Pipe Cutter

PART#	TYPE	UNIT
8120878	For All Sizes Up to 1 1/4" PEX and PEX-AL-PEX Tubing	Each



Simple Cutter

PART#	TYPE	UNIT
8120879	for 3/8" through 1" Tubing	Each



PRESS TOOLS

Manual Press Tool for PEX (F1807 & F2159)

PART#	TYPE	UNIT
8400500	1/2" Stainless Steel Sleeves	Each
8400750	3/4" Stainless Steel Sleeves	Each
8401000	1" Stainless Steel Sleeves	Each



Manual Press Tool for PEX (F1807 & F2159), Compact

PART#	TYPE	UNIT
8401050	1/2" Stainless Steel Sleeves	Each



Manual Press Tool for PEX (F1807 & F2159), Combination

PART#	TYPE	UNIT
8405075	1/2" & 3/4" Stainless Steel Sleeves	Each



**LIMITED WARRANTY—EFFECTIVE MAY 1, 2016
VALID FOR MRPEX® POTABLE PEX-A TUBING, FITTINGS AND OTHER SELECT PLUMBING PRODUCTS**

LIMITED WARRANTY

MrPEX® Systems warrants to its "clients" that the MrPEX® POTABLE PEX-a Tubing and Plumbing Components, used for Plumbing applications, sold hereunder shall be free from defects in material and workmanship and that the components will conform to specifications stated in MrPEX® Publications. This Limited Warranty shall expire thirty (30) years for the MrPEX® POTABLE PEX-a tubing, five (5) years for Lead Free Brass F1807 PEX Press Fittings, PPSU F2159 PEX Press Fittings and two (2) years for all other components, from date of shipment by MrPEX® Systems unless otherwise specified in writing. MrPEX® Systems further warrants that products listed are compatible with Each other, but at the same time we disclaim warranty for claims related to compatibility with non-MrPEX® products. Components sold under this Limited Warranty must (1) be selected, designed, and installed according to the instructions in MrPEX® Publications using appropriate trade workmanship and according to the local building code(s), (2) remain in their originally installed location, (3) are connected to appropriate water and power supplies, (4) show no evidence of tampering, mishandling, neglect, accidental damage, modification or repair without the approval of MrPEX® Systems or damage done to the product by anyone other than MrPEX® Systems authorized personnel. A ten (10) year system warranty shall be offered when a potable water system is installed solely with MrPEX® Systems tubing, fittings, and components.

MrPEX® Systems' sole obligation hereunder shall be, at its option, to issue credit, repair or replace any component or part thereof which is proved to be other than as warranted. No allowance shall be made to clients for transportation or labor charges unless such charges are authorized in writing in advance by MrPEX® Systems. Any repairs without the express written consent of MrPEX® Systems, shall render this Limited Warranty invalid. Warranty claims must be received by MrPEX® Systems within the applicable warranty period and within thirty (30) days from the time when the cause for the claim occurred or was discovered. Upon receipt of prompt notice of a warranty claim, MrPEX® Systems shall have ten (10) business days in which to determine whether it acknowledges responsibility for any asserted defects in material or workmanship and the appropriate action to be taken. This Limited Warranty and any claims arising from breach of warranty, or any other claim arising hereunder, shall be governed and construed under the laws of the State of Minnesota. No other persons than MrPEX® employees have any express or implied authority to bind MrPEX® to any agreement or warranty of any kind without the express written consent of MrPEX® Systems.

Disclaimer of Warranties:

MrPEX® Systems disclaims any warranty not provided herein including the implied warranty of merchantability and implied warranty of fitness for a particular purpose. It is expressly understood that MrPEX® Systems is not responsible for any consequential or other damages that may arise from using MrPEX® System components. Damage resulting from water freezing in the tubing does not constitute a defect in material or workmanship, and shall not be covered by this warranty. MrPEX® tubing may not be stored in direct sunlight for any period longer than three weeks or this limited warranty becomes invalid. Also, exposure to direct or considerable indirect sunlight after installation voids this limited warranty. MrPEX® Systems disclaims any statutory or implied warranty of habitability. MrPEX® Systems further disclaims any responsibility for losses, expenses, inconveniences, special, indirect, secondary, incidental or consequential damages arising from ownership or use of the articles sold hereunder. There are no warranties which extend beyond the face hereof.

General Terms and Conditions

These terms and conditions apply to all MrPEX® products. All customers are subject to credit approval before shipment of product.

Price Changes

MrPEX® reserves the right to change published prices and product availability without prior notification. Our policy is a minimum notification period of 30 days, but under unusual circumstances it may become necessary to shorten this period to meet market needs.

Terms

Terms are 30 days Net or per separate agreement with individual customer.

Minimum Order Quantity

The minimum order is \$300.00 net price. For orders less than \$300.00 net, an order processing charge of \$15.00 will be applied.

Finance Charge

A finance charge of one and one half percent (1.5%) per month will be charged on all overdue balances. This corresponds to an eighteen percent (18%) annual percentage rate (APR).

Taxes

We are required by law to charge applicable state and local taxes unless a sales tax exemption certificate has been provided.

Shipping

We will ship orders received as soon as possible. Please provide eligible orders, preferably by fax in Fine Mode, and attend to your payments and your credit situation. We will try to communicate regarding possible back-orders. Back-orders may or may not be billed separately. Note that items may sometimes be shipped from separate locations. Orders from one warehouse location to the 48 contiguous states with net price over \$4,000.00 will ship freight pre-paid. When such orders are picked up by customer, a pick-up credit may be issued. Orders will ship from closest warehouse location only when ordered products are available from there. LTL orders billed to customers shipping account will incur a processing fee of \$28.00.

Freight Claims, Shortages

If material is received short or damaged, the receiver must require the agent of the transport company to make a notation of delivery condition on the freight bill. If, or when, the goods is arrival inspected and it is found to have a damage likely caused by the freight company, the receiver must report the claim to MrPEX® Systems. We must receive such a claim within 48 hours of the receipt of goods.



mrpexsystems.com

Corporate Office

5300 Alpine Dr. NW, Ste. 210
Ramsey, MN 55303
800-716-3406
sales@mrpexsystems.com
support@mrpexsystems.com

Order Department

Order by Fax: 952-423-6114
800-716-3406
order@mrpexsystems.com