



PROJECT NAME \_\_\_\_\_ DATE \_\_\_\_\_  
 SUBMITTED BY \_\_\_\_\_ PHONE \_\_\_\_\_  
 ADDRESS \_\_\_\_\_  
 \_\_\_\_\_

Radiant Parts Submittal

## TUBING

A Slinky® is suspended on elastic threads around itself. There is no reinforcement along its length. Thus making it remarkably flexible and free to move. The shape remains round. It never kinks, although the bending radius is minimal.

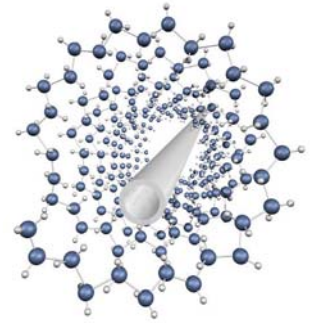
Similarly, PEX molecular chains extend around the tubing like the Slinky® string circles around itself. This makes MrPEX® Tubing extremely flexible and less likely to kink. The molecular chain is aligned to resist stress around its perimeter. It is unusually strong, resisting inside pressure.

The molecular orientation is achieved during extrusion in a very unique process. Crosslinking occurs

simultaneously with the orientation. Peroxide crosslinking guarantees optimal tubing properties.

### Oxygen Diffusion

MrPEX® Barrier PEX Tubing has an Oxygen Diffusion Barrier which meets the stringent requirements of the European DIN 4726 standard. This standard restricts the amount of oxygen that is allowed to permeate the pipe and affect corrodible cast iron or steel components within the system. The standard restricts permeation to less than or equal to 0.10 g/(m3 d). This is considered to be a safe level.



### MrPEX® PEX-A TUBING WITH OXYGEN BARRIER

MrPEX® Barrier PEX tubing is Cross-Linked Polyethylene (PEX-a) manufactured in accordance with ASTM F 876. Tubing is listed to ASTM F 876/877 (CSA B137.5) and ICC-PMG 1053, and also certified by NSF (NSF-rfh). MrPEX® Barrier PEX tubing is rated by the Hydrostatic Stress Board of PPI (Plastics Pipe Institute) at: 160 psi at 73.4°F; 100 psi at 180°F; 80 psi at 200°F. MrPEX® Barrier PEX tubing has an EVOH oxygen barrier that meet DIN 4726. Tubing sizes 3/8" through 3/4" also has a thin coating of PE on top of the barrier in order to reduce noise when installed in joist applications and Aluminum heat transfer plates.



SELECTED	PART#	TYPE	UNIT	QTY
	1210060	3/8"	600 ft.	
	1210100	3/8"	1000 ft.	
	1220030	1/2"	300 ft.	
	1220050	1/2"	500 ft.	
	1220100	1/2"	1000 ft.	
	1220120	1/2"	1200 ft.	
	1220160	1/2"	1600 ft.	
	1230030	5/8"	300 ft.	
	1230033	5/8"	330 ft.	
	1230050	5/8"	500 ft.	
	1230100	5/8"	1000 ft.	
	1230110	5/8"	1100 ft.	
	1240010	3/4"	100 ft.	
	1240030	3/4"	300 ft.	
	1240040	3/4"	400 ft.	
	1240050	3/4"	500 ft.	



Radiant Parts Submittal

PROJECT NAME \_\_\_\_\_ DATE \_\_\_\_\_

SUBMITTED BY \_\_\_\_\_ PHONE \_\_\_\_\_

ADDRESS \_\_\_\_\_

TUBING

SELECTED	PART#	TYPE	UNIT	QTY
	1241020	3/4"	20 ft. Sticks (200 ft.)	
	1250010	1"	100 ft	

**MrPEX® PEX-a Tubing with Oxygen Barrier (cont.)**

SELECTED	PART#	TYPE	UNIT	QTY
	1250030	1"	300 ft	
	1251020	1"	20 ft. Sticks (200 ft.)	
	1260015	1 -1/4"	150 ft	
	1261010	1 -1/4"	20 ft. Sticks (100 ft.)	
	1270015	1 -1/2"	150 ft	
	1271010	1 -1/2"	20 ft. Sticks (100 ft.)	

**MrPEX® PEX-AL-PEX TUBING**

MrPEX® PEX-AL-PEX tubing is a composite pipe manufactured to ASTM F 1281-2005 (CSA B137.10). MrPEX® PEX-AL-PEX tubing is certified by NSF (NSF-rfh) and temperature/pressure rated by the Hydrostatic Stress Board of PPI (Plastics Pipe Institute) in accordance with ASTM F 1281-2005 (CSA B137.10) to 160 psi at 200°F.



SELECTED	PART#	TYPE	UNIT	QTY
	1320025	1/2"	250 ft Orange Coil	
	1320030	1/2"	300 ft Orange Coil	
	1320100	1/2"	1000 ft Orange Coil	
	1321080	1/2"	Tube of 40 – 20 ft Orange Sticks	
	1322030	1/2"	Box of 3 – 100 ft Orange Coils	
	1330040	5/8"	400 ft Orange Coil	
	1330050	5/8"	500 ft Orange Coil	
	1340030	3/4"	300 ft Orange Coil	
	1340050	3/4"	500 ft Orange Coil	
	1341032	3/4"	Tube of 16 – 20 ft Orange Sticks	
	1342020	3/4"	Box of 2 – 100 ft Orange Coils	
	1350010	1"	100 ft Orange Coil	
	1350030	1"	300 ft Orange Coil	
	1350050	1"	500 ft Orange Coil	
	1351020	1"	Tube of 10 – 20 ft Orange Sticks	



Radiant Parts Submittal

PROJECT NAME \_\_\_\_\_ DATE \_\_\_\_\_

SUBMITTED BY \_\_\_\_\_ PHONE \_\_\_\_\_

ADDRESS \_\_\_\_\_

## PEX-AL-PEX FITTINGS

### PRESS FITTINGS FOR PEX-AL-PEX TUBING

MrPEX® Press Fittings for use with MrPEX® ASTM F1281-2005 PEX-AL-PEX tubing in radiant applications. The body is made from DZR brass, double o-rings, and a stainless steel press sleeve. An accurately installed press fitting offers a fast, reliable, and permanent connection.

NOTE: Must use reamer on any PEX-AL-PEX fittings



#### Press Fitting Assemblies

SELECTED	PART#	TYPE	UNIT	QTY
	2110500	1/2" PAP to EK 20	Bag of 10	
	2110625	5/8" PAP to EK 20	Bag of 10	



#### Press Couplings DZR

SELECTED	PART#	TYPE	UNIT	QTY
	2315050	1/2" PAP to 1/2" PAP	Bag of 10	
	2216363	5/8" PAP to 5/8" PAP	Bag of 10	
	2317575	3/4" PAP to 3/4" PAP	Bag of 10	
	2311010	1" PAP to 1" PAP	Bag of 5	



#### Press Transition to NPT DZR

SELECTED	PART#	TYPE	UNIT	QTY
	2325050	1/2" PAP to 1/2" NPT	Bag of 10	
	2325075	1/2" PAP to 3/4" NPT	Bag of 10	
	2226375	5/8" PAP to 3/4" NPT	Bag of 10	
	2327575	3/4" PAP to 3/4" NPT	Bag of 10	
	2321010	1" PAP to 1" NPT	Bag of 5	



#### Press Transition to FIP DZR

SELECTED	PART#	TYPE	UNIT	QTY
	2335050	1/2" PAP to 1/2" FIP	Bag of 10	
	2337575	3/4" PAP to 3/4" FIP	Bag of 10	
	2331010	1" PAP to 1" FIP	Bag of 5	



Radiant Parts Submittal

PROJECT NAME \_\_\_\_\_ DATE \_\_\_\_\_

SUBMITTED BY \_\_\_\_\_ PHONE \_\_\_\_\_

ADDRESS \_\_\_\_\_



**Press Sweat Adapter DZR**

SELECTED	PART#	TYPE	UNIT	QTY
	2355050	1/2" PAP to 1/2" CU	Bag of 10	
	2355075	1/2" PAP to 3/4" CU	Bag of 10	
	2357575	3/4" PAP to 3/4" CU	Bag of 10	
	2351010	1" PAP to 1" CU	Bag of 5	



**Press Elbow DZR**

SELECTED	PART#	TYPE	UNIT	QTY
	2365050	1/2" PAP to 1/2" PAP	Bag of 10	
	2367575	3/4" PAP to 3/4" PAP	Bag of 10	
	2361010	1" PAP to 1" PAP	Bag of 5	



**Press Elbow to Sweat Adapter DZR**

SELECTED	PART#	TYPE	UNIT	QTY
	2380057	1/2" PAP to 3/4" CU	Bag of 10	
	2380077	3/4" PAP to 3/4" CU	Bag of 10	



**Press Tee DZR**

SELECTED	PART#	TYPE	UNIT	QTY
	2397577	3/4" PAP x 3/4" PAP x 3/4" PAP	Bag of 10	
	2391011	1" PAP x 1" PAP x 1" PAP	Bag of 5	

**COMPRESSION FITTINGS FOR PEX-AL-PEX TUBING**

MrPEX® Compression Fitting Assemblies for connection of MrPEX® PEX-AL-PEX tubing to MrPEX® Manifolds or transition fittings with EK (Eurokonus) connection. Fittings consist of a nut, insert and compression ring made of brass. Insert features double o-ring and EK (Eurokonus) seat.



**PEX-AL-PEX Fitting Assemblies**

SELECTED	PART#	TYPE	UNIT	QTY
	2410500	1/2" PAP to EK 20	Bag of 10	
	2410625	5/8" PAP to EK 20	Bag of 10	
	2430750	3/4" PAP to EK 25	Bag of 10	



Radiant Parts Submittal

PROJECT NAME \_\_\_\_\_ DATE \_\_\_\_\_

SUBMITTED BY \_\_\_\_\_ PHONE \_\_\_\_\_

ADDRESS \_\_\_\_\_

\_\_\_\_\_

PEX-AL-PEX FITTINGS



**PEX-AL-PEX Repair Coupling with Fitting Assembly**

SELECTED	PART#	TYPE	UNIT	QTY
	2421010	1" PAP to 1" PAP	Bag of 10	

**PEX-AL-PEX Transition with Fitting Assembly**

SELECTED	PART#	TYPE	UNIT	QTY
	2445050	1/2" PAP to 1/2" NPT	Bag of 10	
	2446375	5/8" PAP to 3/4" NPT	Bag of 10	
	2447575	3/4" PAP to 3/4" NPT	Bag of 10	
	2441010	1" PAP to 1" NPT	Bag of 10	
	2456375	5/8" PAP to 3/4" FIP	Bag of 10	
	2457575	3/4" PAP to 3/4" FIP	Bag of 10	
	2461013	1" PAP to 1 1/4" CU	Bag of 10	
	2451010	1" PAP to 1" FIP	Bag of 10	



PROJECT NAME \_\_\_\_\_ DATE \_\_\_\_\_

SUBMITTED BY \_\_\_\_\_ PHONE \_\_\_\_\_

ADDRESS \_\_\_\_\_

Radiant Parts Submittal

## MANIFOLDS

### 1 1/4" STAINLESS STEEL MANIFOLDS FOR UP TO 5/8" PEX AND PEX-AL-PEX TUBING, 2-12 LOOPS

MrPEX® 1 1/4" Stainless Steel manifolds achieves the highest level of long term corrosion resistance by using a bright annealed high-grade, Type 304, stainless steel with high nickel content. This creates a stable material structure with low levels of ferrite and magnetism. To eliminate the possibility of contact corrosion. The manifolds are fully assembled, ready for mounting. The supply side feature adjustable flow-meters for flows up to 1.45 gpm per loop, and the return side has balancing on/off valves, in accordance with DIN EN 1264-4. The adjustable flow-meter allows for a positive shut-off and the manual plastic cap on the return valve can be removed to accommodate a valve actuator #5120700 or #5120701. The return balancing valve disc is designed to enable exact adjustments of small flows while still being able to handle large flow with minimal resistance. The branch Cv value is 1.38 and the manifold body accommodates flows up to 14 gpm. The supply and return manifold bodies both have wells to accommodate optional thermometers, and a multi-function swivel End Cap allowing for Fill/Drain or Vent. Each inlet of the manifold has a G 1" thread (BSP straight metric thread) allowing for easy connections of the supply and return mains. Use only "MrPEX® Manifold Option" adapters for appropriate connection. The branches have Eurokonus (EK20) connections, and all MrPEX® EK20 compression fitting assemblies (PEX to EK20 or PEX-AL-PEX to EK20) can be used to connect tubing to the manifold.



\* Shipped as shown

#### MrPEX® 1 1/4" Stainless Steel Manifold

SELECTED	PART#	TYPE	UNIT	QTY
	3230200	2 Branches	Each	
	3230300	3 Branches	Each	
	3230400	4 Branches	Each	
	3230500	5 Branches	Each	
	3230600	6 Branches	Each	
	3230700	7 Branches	Each	
	3230800	8 Branches	Each	
	3230900	9 Branches	Each	
	3231000	10 Branches	Each	
	3231100	11 Branches	Each	
	3231200	12 Branches	Each	

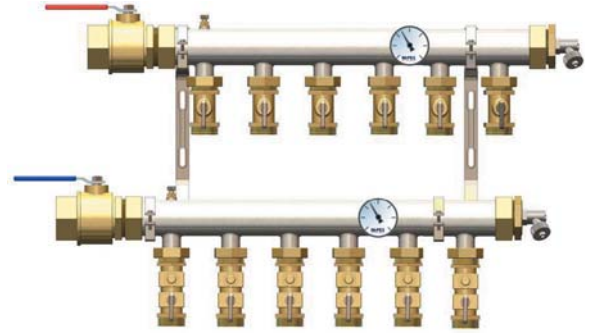


#### MrPEX® Manifold Thermometer

SELECTED	PART#	TYPE	UNIT	QTY
	3230001	32F to 175F	Set of 2	

## 1 1/2" LARGE STAINLESS STEEL MANIFOLDS FOR 5/8" AND 3/4" PEX AND PEX-AL-PEX TUBING

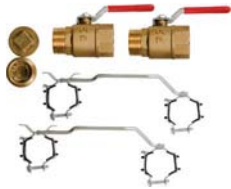
MrPEX® 1 1/2" Large Stainless Steel Manifolds are made from high-quality Type 304 stainless steel and offered in 3–10 loop sections. The manifold body comes with G 1 1/2" flat gasket unions for connection of inlet ball valve G 1 1/2" x 1 1/2" Female NPT and end caps. The branches comes with G 1" flat gasket unions to accommodate the on/off and balancing branch valves G 1" x EK 25 for easy connection with MrPEX® EK 25 fitting assemblies (PEX to EK25 or PEX-AL-PEX to EK25) to connect tubing to the manifold. The branch Cv value is 6 and the manifold body accommodates flows up to 25 gpm. The manifold Base Kit comes with two brackets, two 1 1/2" female NPT ball-valves and two End Caps with fill/drain.



### 1 1/2" Stainless Steel Manifold, Supply & Return Body, G 1" Branch Union, 3" O.C.



SELECTED	PART#	TYPE	UNIT	QTY
	3240300	3 Branches	Set of 2	
	3240400	4 Branches	Set of 2	
	3240500	5 Branches	Set of 2	
	3240600	6 Branches	Set of 2	
	3240700	7 Branches	Set of 2	
	3240800	8 Branches	Set of 2	
	3240900	9 Branches	Set of 2	
	3241000	10 Branches	Set of 2	



### Base Kit for 1 1/2" Stainless Manifold, Ball-Valves, Bracket and End Caps with Fill/Drain Valve

SELECTED	PART#	TYPE	UNIT	QTY
	3230001	32F to 175F	Set of 2	



### On/Off Loop Valve for 1 1/2" Stainless Steel Manifolds

SELECTED	PART#	TYPE	UNIT	QTY
	3240002	G 1" x EK25	Box of 10	



### On/Off Loop Valve with Balancing for 1 1/2" Stainless Steel Manifolds

SELECTED	PART#	TYPE	UNIT	QTY
	3240003	G 1" x EK25	Box of 10	

NOTE: Manifold shown assembled.



Radiant Parts Submittal

PROJECT NAME \_\_\_\_\_ DATE \_\_\_\_\_

SUBMITTED BY \_\_\_\_\_ PHONE \_\_\_\_\_

ADDRESS \_\_\_\_\_

MANIFOLDS



**On/Off Valve for 1 1/2" Stainless Steel Manifolds with PEX Compression Fitting**

SELECTED	PART#	TYPE	UNIT	QTY
	3241063	G1" x 5/8" PEX Comp.	Box of 10	
	3241075	G1" x 3/4" PEX Comp.	Box of 10	



**On/Off Valve, w/ balancing for 1 1/2" Stainless Steel Manifolds with PEX Compression Fitting**

SELECTED	PART#	TYPE	UNIT	QTY
	3241163	G1" x 5/8" PEX Comp.	Bag of 10	
	3241175	G1" x 3/4" PEX Comp.	Bag of 10	



**Manifold Union for 1 1/2" Stainless Steel Manifold**

SELECTED	PART#	TYPE	UNIT	QTY
	3240004	G1 1/4" x G1 1/4"	Set of 2	



**Visual Flowmeter with Balancing/Isolation Valve, 2-8 GPM**

SELECTED	PART#	TYPE	UNIT	QTY
	3240006	G1" x EK25	Each	



**Strap On Pipe Thermometer, 70-200°F**

SELECTED	PART#	TYPE	UNIT	QTY
	5240748	For Pipes 1/2"-4"	Box of 2	





Radiant Parts Submittal

PROJECT NAME \_\_\_\_\_ DATE \_\_\_\_\_  
 SUBMITTED BY \_\_\_\_\_ PHONE \_\_\_\_\_  
 ADDRESS \_\_\_\_\_  
 \_\_\_\_\_

**1 1/2" LARGE BRASS MANIFOLDS FOR 5/8" & 3/4" PEX AND PEX-AL-PEX TUBING, 2-12 LOOPS**

MrPEX® 1 1/2" Large Brass Manifolds are made from high-quality extruded brass and offered in 2-12 loop fully assembled manifolds. The supply body has balancing valves with adjustable flow-meters for flows up to 2.0 gpm per loop. The return body is equipped with on/off valves. The manual plastic cap on the return valve can be removed to accommodate a valve actuator #5120700 or #5120701. Actuator valve adapter #5700010 (VA-10) needs to be purchased separately with the actuator #5120700 or #5120701. The return balancing valve disc is designed to enable exact adjustments of small flows while still being able to handle large flow with minimal resistance. The branch Cv value is 1.3 and the manifold body accommodates flows up to 20 gpm. Manifolds are mounted on brackets ready to mount. Inlets comes with a 1 1/4" female NPT union ball-valve and end caps feature vent and fill/drain. The branches have EK 25 (Eurokonus) connections, and all MrPEX® EK25 fitting assemblies (PEX to EK25 or PEX-AL-PEX to EK25) can be used to connect tubing to the manifold.



\* Shipped as shown

**1 1/2" Manifold Valve & Balancing Flow Meter Fully Assembled**

SELECTED	PART#	TYPE	UNIT	QTY
	3310200	2 Branches	Each	
	3310300	3 Branches	Each	
	3310400	4 Branches	Each	
	3310500	5 Branches	Each	
	3310600	6 Branches	Each	
	3310700	7 Branches	Each	
	3310800	8 Branches	Each	
	3310900	9 Branches	Each	
	3311000	10 Branches	Each	
	3311100	11 Branches	Each	
	3311200	12 Branches	Each	





## Radiant Parts Submittal

PROJECT NAME \_\_\_\_\_ DATE \_\_\_\_\_

SUBMITTED BY \_\_\_\_\_ PHONE \_\_\_\_\_

ADDRESS \_\_\_\_\_

\_\_\_\_\_

### COMPOSITE MANIFOLD

MrPEX® Composite Radiant Manifold is made from a durable high performance glass filled plastic designed to withstand high temperature and pressure. The manifold exceeds the oxygen diffusion standard DIN 4726 and is completely corrosion resistant. The manifold has flow capacity of 15.4 GPM with a branch Cv of 1.35 GPM and comes partially assembled as a complete kit.

Kit includes:

- A complete supply body with positive shut-off balancing flowmeters, thermometer, a Fill/Drain valve with Vent, and a blank end cap.
- A complete return body with on/off valves for manual shut-off, thermometer, a Fill/Drain valve with Vent, and a blank end cap.
- A set of mounting brackets
- A set of 1" NPT isolation union ball-valves.

Plastic cap on the return valve can be removed to accommodate valve actuator #5120700 or #5120701 (Adapter VA 90 part #5700090 is needed). The branches have Eurokonus (EK20) connections, and all MrPEX® EK20 compression fitting assemblies (PEX to EK20 or PEX-AL-PEX to EK20) can be used to connect tubing up to 5/8" to the manifold. Single, 2 loop, and 3 loop add-on supply and return manifold sections and other accessories are sold separately to allow for easy add-on.



\* Shipped as kit

### Composite Manifold, Valve & Flowmeter, Complete Kit

SELECTED	PART#	TYPE	UNIT	QTY
	3810200	2 Loop	Each	
	3810300	3 Loop	Each	
	3810400	4 Loop	Each	
	3810500	5 Loop	Each	
	3810600	6 Loop	Each	
	3810700	7 Loop	Each	
	3810800	8 Loop	Each	
	3810900	9 Loop	Each	
	3811000	10 Loop	Each	
	3811100	11 Loop	Each	
	3811200	12 Loop	Each	



### Composite Manifold Sections, Valve & Flowmeter

SELECTED	PART#	TYPE	UNIT	QTY
	3810001	1 Loop	Each	
	3810002	2 Loop	Each	
	3810003	3 Loop	Each	



## Radiant Parts Submittal

PROJECT NAME \_\_\_\_\_ DATE \_\_\_\_\_

SUBMITTED BY \_\_\_\_\_ PHONE \_\_\_\_\_

ADDRESS \_\_\_\_\_



### Composite Manifold Elbow Set

SELECTED	PART#	TYPE	UNIT	QTY
	3810007	90° Supply and Return Elbows	Set of 2	

### COPPER MANIFOLD ACCESSORIES

MrPEX® Copper Manifold accessories offer Copper Sweat x EK (Eurokonus) mini-ball valves, allowing PEX or PEX-AL-PEX Compression fittings to be connected for pipes up to 3/4".



#### Mini Ball Valve

SELECTED	PART#	TYPE	UNIT	QTY
	3465020	1/2" CU to EK 20	Box of 10	
	3467525	1/2" CU to EK 20	Box of 10	



#### Mini Ball Valve with Balancing

SELECTED	PART#	TYPE	UNIT	QTY
	3465021	1/2" CU to EK 20	Box of 10	
	3467526	3/4" CU to EK 25	Box of 10	

## MANIFOLD FITTINGS

### MANIFOLD OPTIONS

MrPEX® Manifold Options offer transitions, end caps and accessories for MrPEX® manifolds. Some of the 1 1/4" manifolds and transitions feature a 1" BSP metric straight thread using an o-ring seal. Do Not Use teflon tape or thread sealing compounds for these.



#### Loop End Cap

SELECTED	PART#	TYPE	UNIT	QTY
	3610003	EK 20	Box of 2	
	3610004	EK 25	Box of 2	



#### Pressure Test Kit, for 1 1/4" Brass & Stainless Steel Manifolds

SELECTED	PART#	TYPE	UNIT	QTY
	3610005	1" BSP	Each	



Radiant Parts Submittal

PROJECT NAME \_\_\_\_\_ DATE \_\_\_\_\_

SUBMITTED BY \_\_\_\_\_ PHONE \_\_\_\_\_

ADDRESS \_\_\_\_\_



**Pressure Test Kit**

SELECTED	PART#	TYPE	UNIT	QTY
	3700183	1" NPT	Each	



**Pressure Test Kit, for 1 1/2" Brass & Stainless Steel Manifolds**

SELECTED	PART#	TYPE	UNIT	QTY
	3700184	1 1/2" & 1 1/4" NPT	Each	



**Loop Branch Ball Valve**

SELECTED	PART#	TYPE	UNIT	QTY
	3610006	EK 20 x EK 20	Box of 10	



**Manifold Transition for 1 1/4" Brass and Stainless Steel**

SELECTED	PART#	TYPE	UNIT	QTY
	3620001	1" BSP to 1" and 1 1/4" CU	Bag of 2	
	3620010	1" BSP x 3/4" & 1" CU with Lock Nut	Bag of 2	
	3620002	1" BSP to 3/4" NPT	Bag of 2	
	3620003	1" BSP to 1" NPT	Bag of 2	
	3620004	1" BSP to 1" FIP	Bag of 2	
	3620005	1" BSP to 1" BSP (Manifold Double Nipple)	Bag of 2	
	3620006	1" BSP to EK 25	Bag of 2	
	3620007	1" BSP to EK 32	Bag of 2	



MANIFOLD FITTINGS



Radiant Parts Submittal

PROJECT NAME \_\_\_\_\_ DATE \_\_\_\_\_

SUBMITTED BY \_\_\_\_\_ PHONE \_\_\_\_\_

ADDRESS \_\_\_\_\_



**Manifold Transition Ball Valve for 1 1/4" Manifolds**

SELECTED	PART#	TYPE	UNIT	QTY
	3620019	1" BSP Union to 1" Female NPT, Straight	Box of 2	
	3620021	1 BSP Angle Isolation Union to 1" Female NPT	Box of 2	



**Large Dimension PEX 'Push-Fit' Transition**

SELECTED	PART#	TYPE	UNIT	QTY
	4467575	3/4" PEX x 3/4" NPT	Each	
	4461010	1" PEX x 1" NPT	Each	
	4461313	1 1/4" PEX x 1 1/4" NPT	Each	
	4461515	1 1/2" PEX x 1 1/2" NPT	Each	



**Disconnect Tool**

SELECTED	PART#	TYPE	UNIT	QTY
	4460001	3/4"	Each	
	4460002	1"	Each	
	4460003	1 1/4"	Each	
	4460004	1 1/2"	Each	

MANIFOLD FITTINGS



Radiant Parts Submittal

PROJECT NAME \_\_\_\_\_ DATE \_\_\_\_\_

SUBMITTED BY \_\_\_\_\_ PHONE \_\_\_\_\_

ADDRESS \_\_\_\_\_

## PEX FITTINGS

### PEX FITTINGS AND EUROCONUS (EK) FITTINGS

MrPEX® Compression Fitting Assemblies for connection of MrPEX® Barrier PEX tubing to MrPEX® Manifolds or transition fittings with EK (Eurokonus) connection. Fittings consists of a nut, insert and compression ring made of brass. Insert features o-ring and EK (Eurokonus) seat.



#### PEX Fitting Assembly (Nut Ring & Insert) for EK

SELECTED	PART#	TYPE	UNIT	QTY
	4310375	3/8" PEX to EK 20	Bag of 10	
	4310500	1/2" PEX to EK 20	Bag of 10	
	4310625	5/8" PEX to EK 20	Bag of 10	
	4310750	3/4" PEX to EK 20	Bag of 10	
	4320625	5/8" PEX to EK 25	Bag of 10	
	4320750	3/4" PEX to EK 25	Bag of 10	
	4331000	1" PEX to EK 32	Bag of 10	



#### Copper Sweat Transition

SELECTED	PART#	TYPE	UNIT	QTY
	4342050	EK 20 to 1/2" & 3/4" CU	Bag of 10	
	4342575	EK 25 to 3/4" & 1" CU	Bag of 10	
	4343210	EK 32 to 1" & 1 1/4" CU	Bag of 2	



#### NPT Transition

SELECTED	PART#	TYPE	UNIT	QTY
	4372050	EK20 to 1/2" NPT	Bag of 10	
	4372575	EK25 to 3/4" NPT	Bag of 10	
	4372510	EK25 to 1" NPT	Bag of 2	
	4373210	EK32 to 1" NPT	Bag of 2	



#### Coupling Nipple for PEX to PEX

SELECTED	PART#	TYPE	UNIT	QTY
	4352020	EK 20 to EK 20	Bag of 10	
	4352525	EK 25 to EK 25	Bag of 10	
	4353232	EK 32 to EK 32	Bag of 10	



Radiant Parts Submittal

PROJECT NAME \_\_\_\_\_ DATE \_\_\_\_\_  
 SUBMITTED BY \_\_\_\_\_ PHONE \_\_\_\_\_  
 ADDRESS \_\_\_\_\_  
 \_\_\_\_\_

## AXIAL PRESS FITTINGS F2080 FOR PEX TUBING

MrPEX® Axial Press Fittings ASTM F2080 for use with MrPEX® Barrier PEX tubing in radiant applications. The body is made from brass and uses a brass axial press sleeve (sold separately). An accurately installed axial press fitting offers a fast, reliable, and permanent connection.



### Axial Press Brass Rings

SELECTED	PART#	TYPE	UNIT	QTY
	4500500	1/2"	Bag of 10	
	4500625	5/8"	Bag of 10	
	4500750	3/4"	Bag of 10	
	4501000	1"	Bag of 10	



### Axial Press Manifold Transitions

SELECTED	PART#	TYPE	UNIT	QTY
	4501063	1" BSP x 5/8" PEX	Bag of 2	
	4501075	1" BSP x 3/4" PEX	Bag of 2	
	4501010	1" BSP x 1" PEX	Bag of 2	



### Axial Press Couplings

SELECTED	PART#	TYPE	UNIT	QTY
	4515050	1/2" PEX x 1/2" PEX	Bag of 10	
	4516363	5/8" PEX x 5/8" PEX	Bag of 10	
	4517575	3/4" PEX x 3/4" PEX	Bag of 10	
	4511010	1" PEX x 1" PEX	Bag of 10	



### Axial Press Transition to NPT

SELECTED	PART#	TYPE	UNIT	QTY
	4525050	1/2" PEX to 1/2" NPT	Bag of 10	
	4526375	5/8" PEX to 3/4" NPT	Bag of 10	
	4527510	3/4" PEX to 1" NPT	Bag of 10	
	4527575	3/4" PEX to 3/4" NPT	Bag of 10	
	4521010	1" PEX to 1" NPT	Bag of 10	

### Axial Press Transition to FIP

SELECTED	PART#	TYPE	UNIT	QTY
	4535050	1/2" PEX to 1/2" FIP	Bag of 10	
	4536375	5/8" PEX to 3/4" FIP	Bag of 10	
	4537510	3/4" PEX to 1" FIP	Bag of 10	
	4537575	3/4" PEX to 3/4" FIP	Bag of 10	
	4531010	1" PEX to 1" FIP	Bag of 10	



Radiant Parts Submittal

PROJECT NAME \_\_\_\_\_ DATE \_\_\_\_\_

SUBMITTED BY \_\_\_\_\_ PHONE \_\_\_\_\_

ADDRESS \_\_\_\_\_

\_\_\_\_\_

PEX FITTINGS



**Axial Press Transition to CU Female Sweat**

SELECTED	PART#	TYPE	UNIT	QTY
	4555050	1/2" PEX to 1/2" CU	Bag of 10	
	4556375	5/8" PEX to 3/4" CU	Bag of 10	
	4557510	3/4" PEX to 1" CU	Bag of 10	
	4557575	3/4" PEX to 3/4" CU	Bag of 10	
	4551010	1" PEX to 1" CU	Bag of 10	

**Axial Press Elbow**

SELECTED	PART#	TYPE	UNIT	QTY
	4577575	3/4" PEX x 3/4" PEX	Bag of 10	
	4571010	1" PEX x 1" PEX	Bag of 10	





# CONTROLS

## ZONING CONTROLS

MrPEX® Zoning Controls offer low voltage electronic zone control featuring thermostats, zone box, valve actuators, zone valves.



### Digital Room Thermostats

SELECTED	PART#	TYPE	UNIT	QTY
	5110740	Air Only	Each	
	5110741	Air and Floor with 10k Floor Sensor	Each	



### Valve Actuator for Valved Manifolds

SELECTED	PART#	TYPE	UNIT	QTY
	5120700	4-wire	Each	
	5120701	2-wire	Each	

NOTE: No adapter is needed when used with MrPEX 1 1/4" Stainless Steel Manifolds. When used with MrPEX 1 1/4" & 1 1/2" Brass Manifolds, adapter ring 5700010 (VA-10), when used with MrPEX Composite Manifold, use adapter 5700090 (VA-90 WE), all adapters need to be purchased separately. Please contact us for other adapter types.



### Actuator Adapter Ring

SELECTED	PART#	TYPE	UNIT	QTY
	5700010	For 1 1/2" Brass Manifolds (VA-10)	Each	
	5700090	For MrPEX Composite Manifold (VA-90 WE)	Each	



### Zone Valve including actuator with End Switch

SELECTED	PART#	TYPE	UNIT	QTY
	5120711	1/2", CU Union x CU Union, Cv 2.1	Each	
	5120712	3/4", CU Union x CU Union, Cv 3.2	Each	



**Zone Valve including actuator with End Switch**

SELECTED	PART#	TYPE	UNIT	QTY
	5120721	1/2", Female NPT x Male NPT, Cv 2.1	Each	
	5120722	3/4", Female NPT x Male NPT, Cv 3.2	Each	
	5120723	1", Female NPT x Male NPT, Cv 4.0	Each	
	5120724	1 1/4", Female NPT x Male NPT, Cv 4.7	Each	



**Zone Controller**

SELECTED	PART#	TYPE	UNIT	QTY
	5130704	Simple Zone Controller, 24V, Up to 4 Zones	Each	
	5130706	with End-Switch and Pump Output Relay; Up to 6 Zones	Each	
	5130801	Single Pump Relay	Each	

**SNOW MELT CONTROLS**

MrPEX® Snow Melt Controls offer low voltage snow melt control for 1 or 2 zone applications, Snow/Ice Detector, and sensors.



**Snow Melt Controller (No sensors included)**

SELECTED	PART#	TYPE	UNIT	QTY
	5140001	1 or 2 Zone	Each	

**Snow Melt Moisture & Temperature Sensor**

SELECTED	PART#	TYPE	UNIT	QTY
	5140002	Surface Mount with 82' Cable	Each	

**Mounting Socket for Snow Melt Moisture Sensor**

SELECTED	PART#	TYPE	UNIT	QTY
	5140003	Surface Mount	Each	

**Snow Melt Moisture & Temperature Sensor**

SELECTED	PART#	TYPE	UNIT	QTY
	5140004	Gutter Mount with 33' Cable	Each	



# Radiant Parts Submittal

PROJECT NAME \_\_\_\_\_ DATE \_\_\_\_\_

SUBMITTED BY \_\_\_\_\_ PHONE \_\_\_\_\_

ADDRESS \_\_\_\_\_

CONTROLS



### Outdoor Air Sensor

SELECTED	PART#	TYPE	UNIT	QTY
	5140005	12k Wall Mount	Each	



### Temperature Sensors

SELECTED	PART#	TYPE	UNIT	QTY
	5140006	12k Pipe	Each	
	5140007	12k Slab	Each	

## MIXING CONTROLS

MrPEX® Mixing Controls offer brass 3-way and 4-way mixing valves, low voltage floating action or 0-10v motors, and thermostatic 3-way tempering valve.



### 3-Way Thermostatic Mixing Valve (95 F - 131 F)

SELECTED	PART#	TYPE	UNIT	QTY
	5210742	1", CU Union	Each	



### 3-way compact mixing valve of brass

SELECTED	PART#	TYPE	UNIT	QTY
	5250325	3/4" Copper Sweat Union, Cv 7.3	Each	
	5250332	1" Copper Sweat Union, Cv 13.8	Each	
	5250340	1 1/4" Copper Sweat Union, Cv 17.3	Each	



### 4-way compact mixing valve of brass

SELECTED	PART#	TYPE	UNIT	QTY
	5250425	3/4" Copper Sweat Union, Cv 7.3	Each	
	5250432	1" Copper Sweat Union, Cv 13.8	Each	
	5250440	1 1/4" Copper Sweat Union, Cv 17.3	Each	



### Sweat Transition for 3-Way and 4-Way Brass Mixing Valves

SELECTED	PART#	TYPE	UNIT	QTY
	5250002	G 1" x 3/4" Sweat	Each	
	5250003	G 1 1/4" x 1" Sweat	Each	
	5250004	G 1 1/2" x 1 1/4" Sweat	Each	

PROJECT NAME \_\_\_\_\_ DATE \_\_\_\_\_

SUBMITTED BY \_\_\_\_\_ PHONE \_\_\_\_\_

ADDRESS \_\_\_\_\_



**Valve Motor 24 VAC 90° 70 sec 5 Nm**

SELECTED	PART#	TYPE	UNIT	QTY
	5220051	Floating Action with Mounting Kit	Each	
	5220058	0-10 V with Mounting Kit	Each	

**Motor Adapter Kit**

SELECTED	PART#	TYPE	UNIT	QTY
	5220151	for ESBE Valves	Each	



**SmartComfort 110 – Reset Control Motor Kit, with Sensors**

SELECTED	PART#	TYPE	UNIT	QTY
	5230110	Valve Motor with built-in control	Each	



**SmartComfort 100 – Setpoint Control Motor Kit, with Sensor**

SELECTED	PART#	TYPE	UNIT	QTY
	5230100	Valve Motor with built-in control	Each	



**Outdoor Temperature Sensor, Spare Part**

SELECTED	PART#	TYPE	UNIT	QTY
	5230101	for SmartComfort 110	Each	

**Supply Temperature Sensor, Spare Part**

SELECTED	PART#	TYPE	UNIT	QTY
	5230102	for SmartComfort 110 & 100	Each	



**Remote Room Control Unit**

SELECTED	PART#	TYPE	UNIT	QTY
	5230103	for SmartComfort 110	Each	

## TOOLS & ACCESSORIES

### HEAT TRANSFER ACCESSORIES

MrPEX® Accessories feature extruded aluminum heat transfer plates and MrPEX® Wood Trac Flooring with omega style aluminum heat transfer plates for even heat distribution in suspended applications. RetroPanel is used for retrofit applications on top of existing concrete.



#### Omega Style Aluminum Heat Transfer Plates

SELECTED	PART#	TYPE	UNIT	QTY
	6110702	18" x 5" for 1/2" Tubing	Box of 100	



#### DuoTrack Extruded Aluminum Heat Transfer Plates, Pre-drilled

SELECTED	PART#	TYPE	UNIT	QTY
	6110733	48" x 3.75" for 3/8" or 1/2" PEX	Box of 20	

NOTE: Quick estimate for 8" O.C., ((square footage x 0.9) x 1.5) / 4 = Qty of DuoTrack Plates.



#### RetroPanel Heat Transfer System

SELECTED	PART#	TYPE	UNIT	QTY
	6114001	15 3/4" x 31 1/2" Straight for 1/2" PEX Tubing	Box of 10	
	6114002	15 3/4" x 15 3/4" for 1/2" PEX Tubing	Box of 20	
	6114007	Replacement Fasteners for #6114002	Bag of 4	

NOTE: Estimated list price per square foot of covered area is \$8.06.

Material estimate; Floor area (sqft) x 0.9 = net floor area.

Straight Panel = Net floor area x 0.70 / 3.44 = Qty.

Return Panel = Net floor area x 0.30 / 1.72 = Qty.



#### Wood Trac Flooring

SELECTED	PART#	TYPE	UNIT	QTY
	6115001	48" x 48" x 3/4" for 1/2" PEX, 8" O.C., for use with #6110702	Each	

NOTE: Use 16 each of part# 6110702 for total coverage. Estimated list price per square foot of covered area is \$8.46. Special order 2-4 week lead time.

## TUBE FASTENERS AND ORGANIZERS

MrPEX® Fasteners and associated accessories and tools allow for easy and fast installations of the tubing in slab or suspended applications.



### Manifold Cabinets

SELECTED	PART#	TYPE	UNIT	QTY
	6212421	20 4/5" W x 31 1/2" H x 5 1/10" D for Surface Mounting	Each	
	6212431	26 4/5" W x 31 1/2" H x 5 1/10" D for Surface Mounting	Each	
	6212451	40 1/2" W x 31 1/2" H x 5 1/10" D for Surface Mounting	Each	
	6213421	20 4/5" W x 27 1/5-31 1/10" H x 5 1/10" D for Recessed Mounting	Each	
	6213431	26 4/5" W x 27 1/5-31 1/10" H x 5 1/10" D for Recessed Mounting	Each	
	6213451	40 1/2" W x 27 1/5-31 1/10" H x 4 1/4" D for Recessed Mounting	Each	

### Surface Manifold Cabinet Selection Chart

PART#	1 1/4" STAINLESS NO BALL VALVE	1 1/4" STAINLESS WITH BALL VALVE	COMPOSITE	1 1/2" STAINLESS	1 1/2" BRASS
6212421	Up to 7 Loops	Up to 6 Loops	Up to 6 Loops	Up to 4 Loops	Up to 5 Loops
6212431	Up to 11 Loops	Up to 10 Loops	Up to 10 Loops	Up to 8 Loops	Up to 8 Loops
6412451	Up to 12 Loops	Up to 12 Loops	Up to 12 Loops	Up to 10 Loops	Up to 12 Loops

### Recessed Manifold Cabinet Selection Chart

PART#	1 1/4" STAINLESS NO BALL VALVE	1 1/4" STAINLESS WITH BALL VALVE	COMPOSITE	1 1/2" STAINLESS	1 1/2" BRASS
6213421	Up to 7 Loops	Up to 6 Loops	Up to 6 Loops	Up to 4 Loops	Up to 5 Loops
6213431	Up to 11 Loops	Up to 10 Loops	Up to 10 Loops	Up to 8 Loops	Up to 8 Loops
6213451	Up to 12 Loops	Up to 12 Loops	Up to 12 Loops	Up to 10 Loops	Up to 12 Loops



### Tacker Tool

SELECTED	PART#	TYPE	UNIT	QTY
	7110223	to Mount #7110224	Each	

### Foam Insulation Board Tacker Staples for 3/8" to 3/4" PEX and 3/8" to 5/8" PAP Tubing

SELECTED	PART#	TYPE	UNIT	QTY
	7110224	2"	Box of 300	

PROJECT NAME \_\_\_\_\_ DATE \_\_\_\_\_

SUBMITTED BY \_\_\_\_\_ PHONE \_\_\_\_\_

ADDRESS \_\_\_\_\_

\_\_\_\_\_



**Foam Insulation Board Anchor Clips  
for 3/8" to 5/8" PEX and PAP Tubing**

SELECTED	PART#	TYPE	UNIT	QTY
	7110229		Bag of 50	



**Anchor Clip Mounting Tool**

SELECTED	PART#	TYPE	UNIT	QTY
	7110232	For #7110229	Each	



**Plywood Rider Staples**

SELECTED	PART#	TYPE	UNIT	QTY
	7110235	For 3/8" to 5/8" PEX and PAP Tubing	Box of 500	

**Rider Staples Mounting Gun**

SELECTED	PART#	TYPE	UNIT	QTY
	7110236	For #7110235	Each	



**Quip Clip for Fastening PEX to Wire Mesh**

SELECTED	PART#	TYPE	UNIT	QTY
	7120225	For 1/2" PEX	Bag of 250	
	7120226	For 5/8" & 3/4" PEX	Bag of 250	



**Plastic Bend Supports**

SELECTED	PART#	TYPE	UNIT	QTY
	7130211	For 3/8" PEX Tubing	Bag of 10	
	7130212	For 1/2" PEX Tubing	Bag of 10	
	7130213	For 5/8" PEX Tubing	Bag of 10	
	7130214	For 3/4" PEX Tubing	Bag of 10	
	7130215	For 1" PEX Tubing	Bag of 10	



**Metal Bend Supports (For Suspended Applications)**

SELECTED	PART#	TYPE	UNIT	QTY
	7140375	for 3/8" PEX Tubing	Bag of 50	
	7140500	for 1/2" PEX Tubing	Bag of 50	
	7140625	for 5/8" PEX Tubing	Bag of 50	
	7140750	for 3/4" PEX Tubing	Bag of 25	

PROJECT NAME \_\_\_\_\_ DATE \_\_\_\_\_

SUBMITTED BY \_\_\_\_\_ PHONE \_\_\_\_\_

ADDRESS \_\_\_\_\_



### Plastic Conduit Bend Supports (For Concrete Applications)

SELECTED	PART#	TYPE	UNIT	QTY
	7153862	3/8"-5/8" Tubing	Bag of 10	
	7156275	5/8"-3/4" Tubing	Bag of 10	



### Pipe Organizer

SELECTED	PART#	TYPE	UNIT	QTY
	6210001	For 1 1/4" Stainless Steel Manifolds, Uses Bend Support #7153862	Each	



### OctaRail for Mounting PEX

SELECTED	PART#	TYPE	UNIT	QTY
	7223875	For 3/8", 1/2", 5/8", 3/4" PEX, 3.28 ft (1 Meter) each	Box of 100	

NOTE: Each box of 100 will accommodate 600 ft of PEX based on a 12" O.C, 900 ft or 9" O.C, and 1200 for 6" O.C.



### Plastic Zip Ties

SELECTED	PART#	TYPE	UNIT	QTY
	7120008	8"	Bag of 1000	

## INSTALLATION TOOLS

MrPEX® Installation Tools features tube handling tools for PEX or PEX-AL-PEX as well as prep and press fitting tools for PEX-AL-PEX.



### Compact Adjustable Tubing Uncoiler

SELECTED	PART#	TYPE	UNIT	QTY
	8110720	Heavy Duty	Each	



### Pipe Straightener with Bracket

SELECTED	PART#	TYPE	UNIT	QTY
	8110721	for 3/4" and 1" PAP Tubing	Each	





Radiant Parts Submittal

PROJECT NAME \_\_\_\_\_ DATE \_\_\_\_\_

SUBMITTED BY \_\_\_\_\_ PHONE \_\_\_\_\_

ADDRESS \_\_\_\_\_

TOOLS & ACCESSORIES



**Feed Eye with Bracket**

SELECTED	PART#	TYPE	UNIT	QTY
	8110722	for PEX Tubing	Each	



**Pipe Cutter**

SELECTED	PART#	TYPE	UNIT	QTY
	8120878	For All Sizes Up to 1 1/4" PEX and PEX-AL-PEX Tubing	Each	



**Simple Cutter**

SELECTED	PART#	TYPE	UNIT	QTY
	8120879	for 3/8" through 1" Tubing	Each	



**Burring Reamer for PEX-AL-PEX**

SELECTED	PART#	TYPE	UNIT	QTY
	8210872	5/8" - 3/4" - 1"	Each	
	8210874	1/2" - 5/8" - 3/4"	Each	
	8220875	1/2" - 3/4" - 1"	Each	



**External Bending Spring for PEX-AL-PEX**

SELECTED	PART#	TYPE	UNIT	QTY
	8221882	1/2" PAP	Each	
	8220884	3/4" PAP	Each	
	8220885	1" PAP	Each	



Radiant Parts Submittal

PROJECT NAME \_\_\_\_\_ DATE \_\_\_\_\_

SUBMITTED BY \_\_\_\_\_ PHONE \_\_\_\_\_

ADDRESS \_\_\_\_\_



**Manual Press Tool for PEX-AL-PEX**

SELECTED	PART#	TYPE	UNIT	QTY
	8230895	Manual Press Tool Kit for PEX-AL-PEX w/ Inserts	1/2", 3/4", 5/8", 1"	
	8230896	1/2" Insert for #8230895	Each	
	8230897	5/8" Insert for #8230895	Each	
	8230898	3/4" Insert for #8230895	Each	
	8230899	1" Insert for #8230895	Each	



**Battery Press Tool for PEX-AL-PEX**

SELECTED	PART#	TYPE	UNIT	QTY
	8243000	Basic Kit, No Jaws for 1/2", 5/8", 3/4" and 1" PAP	Each	
	8243001	Kit with 1/2", 3/4" and 1" Jaws for 1/2", 5/8", 3/4" and 1" PAP	Each	
	8243002	Spare Battery	Each	
	8243003	Spare Battery Charger	Each	
	8243010	1" PEX Crimp Jaw (F1807) for #8243000	Each	
	8243013	1 1/4" PEX Crimp Jaw (F1807) for #8243000	Each	
	8243016	1/2" PAP Press Jaw for #8243000	Each	
	8243020	5/8" PAP Press Jaw for #8243000	Each	
	8243025	3/4" PAP Press Jaw for #8243000	Each	
	8243032	1" PAP Press Jaw for #8243000	Each	
	8243050	1/2" PEX Press Jaw (F1807) for #8243000	Each	
	8243075	3/4" PEX Press Jaw (F1807) for #8243000	Each	
	8243010	3/4" PEX Press Jaw (F1807) for #8243000	Each	

TOOLS & ACCESSORIES



Radiant Parts Submittal

PROJECT NAME \_\_\_\_\_ DATE \_\_\_\_\_

SUBMITTED BY \_\_\_\_\_ PHONE \_\_\_\_\_

ADDRESS \_\_\_\_\_

\_\_\_\_\_



### Axial Press Tool

SELECTED	PART#	TYPE	UNIT	QTY
	8320001	No Jaws	Each	

### Jaws for Axial Press Tool

SELECTED	PART#	TYPE	UNIT	QTY
	8320002	4-in-1 (1/2", 5/8", 3/4")	Each	
	8321000	1"	Each	



### Axial Press Expander Tool

SELECTED	PART#	TYPE	UNIT	QTY
	8330001	No Heads	Each	

### Axial Press Expander Head

SELECTED	PART#	TYPE	UNIT	QTY
	8330375	3/8"	Each	
	8330500	1/2"	Each	
	8330625	5/8"	Each	
	8330750	3/4"	Each	
	8331000	1"	Each	

TOOLS & ACCESSORIES



PROJECT NAME \_\_\_\_\_ DATE \_\_\_\_\_  
 SUBMITTED BY \_\_\_\_\_ PHONE \_\_\_\_\_  
 ADDRESS \_\_\_\_\_  
 \_\_\_\_\_

Potable Parts Submittal

## TUBING

A Slinky® is suspended on elastic threads around itself. There is no reinforcement along its length. Thus making it remarkably flexible and free to move. MrPEX® molecular chains extend around the tubing like the Slinky® string circles around itself. This makes MrPEX® Tubing extremely flexible and less likely to kink. The molecular chain is aligned to resist stress around its perimeter. It is unusually strong, resisting inside pressure. The molecular orientation is achieved during extrusion in a very unique process. Crosslinking occurs simultaneously with the orientation. PEX-a peroxide crosslinking guarantees optimal tubing properties.

### MRPEX® POTABLE PEX-A TUBING

MrPEX® POTABLE PEX-a tubing is Cross-Linked Polyethylene (PEX-a) manufactured in accordance with ASTM F 876. Tubing is listed to ASTM F 876/F877/F2023, ASTM E84 (CSA B137.5), cNSFus-pw, NSF/ANSI-61, NSF/ANSI-14, Annex G, NSF U.P.Code PEX 5006, ICC-PMG, ANSI/AWWA 904. MrPEX® POTABLE PEX-a tubing is rated by the Hydrostatic Stress Board of PPI (Plastics Pipe Institute) at: 160 psi at 73.4°F; 100 psi at 180°F. MrPEX® POTABLE PEX-a tubing may be used with fittings that are compliant with ASTM F1807/F1960/F2080/F2098/F2159 standards.

MrPEX® POTABLE PEX-a tubing is offered in coils and straight lengths of RED, WHITE and BLUE colors to help identify hot and cold water supply.



### WHITE - MrPEX POTABLE PEX-a TUBING

SELECTED	PART#	TYPE	UNIT	QTY
	1622060	1/2"	Box of 6 - 100 ft Coils	
	1620030	1/2"	300 ft Coil	
	1620050	1/2"	500 ft Coil	
	1621040	1/2"	Bag of 20 - 400 ft (20 ft Sticks)	
	1642030	3/4"	Box of 3 - 100 ft Coil	
	1640030	3/4"	300 ft Coil	
	1641020	3/4"	Bag of 10 - 200 ft (20 ft Sticks)	
	1650010	1"	100 ft Coil	
	1650030	1"	300 ft Coil	
	1651010	1"	Bag of 5 - 100 ft (20 ft Sticks)	



Potable Parts Submittal

PROJECT NAME \_\_\_\_\_ DATE \_\_\_\_\_

SUBMITTED BY \_\_\_\_\_ PHONE \_\_\_\_\_

ADDRESS \_\_\_\_\_

\_\_\_\_\_

TUBING



**RED - MrPEX POTABLE PEX-a TUBING**

SELECTED	PART#	TYPE	UNIT	QTY
	1722060	1/2"	Box of 6 - 100 ft Coils	
	1720030	1/2"	300 ft Coil	
	1720050	1/2"	500 ft Coil	
	1721040	1/2"	Bag of 20 - 400 ft (20 ft Sticks)	
	1742030	3/4"	Box of 3 - 100 ft Coil	
	1740030	3/4"	300 ft Coil	
	1741020	3/4"	Bag of 10 - 200 ft (20 ft Sticks)	
	1750010	1"	100 ft Coil	
	1750030	1"	300 ft Coil	
	1751010	1"	Bag of 5 - 100 ft (20 ft Sticks)	



**BLUE - MrPEX POTABLE PEX-a TUBING**

SELECTED	PART#	TYPE	UNIT	QTY
	1822060	1/2"	Box of 6 - 100 ft Coils	
	1820030	1/2"	300 ft Coil	
	1820050	1/2"	500 ft Coil	
	1821040	1/2"	Bag of 20 - 400 ft (20 ft Sticks)	
	1842030	3/4"	Box of 3 - 100 ft Coil	
	1840030	3/4"	300 ft Coil	
	1841020	3/4"	Bag of 10 - 200 ft (20 ft Sticks)	
	1850010	1"	100 ft Coil	
	1850030	1"	300 ft Coil	
	1851010	1"	Bag of 5 - 100 ft (20 ft Sticks)	

## MANIFOLDS

### COMPOSITE MULTIPORT TEE'S, F2159 FITTINGS

MrPEX® Composite Multiport Tees are made from a blend of engineered high performance PolyPhenylSulfone (PPSU) resin to achieve a long-term durable product. These PPSU fittings are durable, light weight, corrosion free, and resistant to chlorine and other substances that may be present in today's potable water supply. The Sulfone resin has been used and refined over the past 20 years and has proven a very reliable replacement for brass and copper fittings. MrPEX® multiport tees meet the material and dimensional requirements of ASTM F2159 and meet the requirements of ASTM F877. MrPEX Stainless Steel Press Sleeves and PEX Press tools are required and purchased separately.



#### Single Side - 3/4" PEX Inlet x Closed End x 1/2" PEX

SELECTED	PART#	TYPE	UNIT	QTY
	3011030	3 Branches	Bag of 5	
	3011040	4 Branches	Bag of 5	
	3011060	6 Branches	Bag of 5	
	3011080	8 Branches	Bag of 5	



#### Single Side - 1" PEX Inlet x Closed End x 1/2" PEX

SELECTED	PART#	TYPE	UNIT	QTY
	3012060	6 Branches	Bag of 5	
	3012080	8 Branches	Bag of 5	



#### Double Side - 1" PEX Inlet x Closed End x 1/2" PEX

SELECTED	PART#	TYPE	UNIT	QTY
	3012330	3+3 Branches	Bag of 5	
	3012440	4+4 Branches	Bag of 5	



#### Single Side - 3/4" PEX Inlet x 3/4" PEX End x 1/2" PEX

SELECTED	PART#	TYPE	UNIT	QTY
	3011031	3 Branches	Bag of 5	
	3011041	4 Branches	Bag of 5	



#### Single Side - 1" PEX Inlet x 3/4" PEX End x 1/2" PEX

SELECTED	PART#	TYPE	UNIT	QTY
	3012031	3 Branches	Bag of 5	
	3012041	4 Branches	Bag of 5	
	3012061	6 Branches	Bag of 5	
	3012081	8 Branches	Bag of 5	



Potable Parts Submittal

PROJECT NAME \_\_\_\_\_ DATE \_\_\_\_\_

SUBMITTED BY \_\_\_\_\_ PHONE \_\_\_\_\_

ADDRESS \_\_\_\_\_



**Single Side - 3/4" PEX Inlet x 3/4" PEX End x 1/2" PEX**

SELECTED	PART#	TYPE	UNIT	QTY
	3011331	3+3 Branches	Bag of 5	
	3011441	4+4 Branches	Bag of 5	



**Double Side - 1" PEX Inlet x 3/4" PEX End x 1/2" PEX**

SELECTED	PART#	TYPE	UNIT	QTY
	3012331	3+3 Branches	Bag of 5	
	3012441	4+4 Branches	Bag of 5	

**COPPER MULTIPORT TEE'S, F1807 FITTINGS WITH 1" COPPER BODY**

MrPEX® Copper Manifolds are made from type L copper. The No Lead product materials comply with NSF 61, which allows the product to contain no more than 0.25% lead. These manifolds meet F1807. MrPEX Stainless Steel Press Sleeves and PEX Press tools are required and purchased separately.



**Single Side - 3/4" PEX Inlet x Closed End x 1/2" PEX**

SELECTED	PART#	TYPE	UNIT	QTY
	3021030	3 Branches	Bag of 5	
	3021040	4 Branches	Bag of 5	
	3021060	6 Branches	Bag of 5	
	3021080	8 Branches	Bag of 5	



**Single Side - 1" PEX Inlet x Closed End x 1/2" PEX**

SELECTED	PART#	TYPE	UNIT	QTY
	3022060	6 Branches	Bag of 5	
	3022080	8 Branches	Bag of 5	



**Single Side - 3/4" PEX Inlet x 3/4" PEX End x 1/2" PEX**

SELECTED	PART#	TYPE	UNIT	QTY
	3021041	3 Branches	Bag of 5	
	3021041	4 Branches	Bag of 5	



**Single Side - 1" PEX Inlet x 3/4" PEX End x 1/2" PEX**

SELECTED	PART#	TYPE	UNIT	QTY
	3021031	4 Branches	Bag of 5	
	3022061	6 Branches	Bag of 5	
	3022081	8 Branches	Bag of 5	

MANIFOLDS



Potable Parts Submittal

PROJECT NAME \_\_\_\_\_ DATE \_\_\_\_\_  
 SUBMITTED BY \_\_\_\_\_ PHONE \_\_\_\_\_  
 ADDRESS \_\_\_\_\_  
 \_\_\_\_\_

**COPPER MANIFOLD WITH VALVES, LF BRASS F1807 FITTINGS WITH 1" COPPER BODY**

MrPEX® Copper Manifolds are made from type L copper and Lead Free Brass. The No Lead product materials comply with NSF 61, which allows the product to contain no more than 0.25% lead. These manifolds meet F1807. MrPEX Stainless Steel Press Sleeves and PEX Press tools are required and purchased separately.



**Single Side - 3/4" PEX Inlet x Closed End x 1/2" PEX**

SELECTED	PART#	TYPE	UNIT	QTY
	3031040	4 Branches	Each	
	3031050	5 Branches	Each	
	3031060	6 Branches	Each	



**Single Side - 1" Sweat Right Inlet x Closed End x 1/2" PEX Valves**

SELECTED	PART#	TYPE	UNIT	QTY
	3042080	8 Branches	Each	
	3042100	10 Branches	Each	
	3042120	12 Branches	Each	



**Single Side - 1" Sweat Left Inlet x Closed End x 1/2" PEX Valves**

SELECTED	PART#	TYPE	UNIT	QTY
	3043080	8 Branches	Each	
	3043100	10 Branches	Each	
	3043120	12 Branches	Each	

**PPSU FITTINGS**

**PEX PRESS FITTINGS - PPSU**

MrPEX® plastic fittings are made from a blend of engineered high performance PolyPhenylSulfone (PPSU) resin to achieve a long-term durable product. These PPSU fittings are durable, light weight, corrosion free, and resistant to chlorine and other substances that may be present in today's potable water supply. The Sulfone resin has been used and refined over the past 20 years and has proven a very reliable replacement for brass and copper fittings. MrPEX® fittings are listed to ASTM F2159. MrPEX® Stainless Steel Press Sleeves and PEX Press tools are required and purchased separately.



**PEX Press Sleeves - Stainless Steel**

SELECTED	PART#	TYPE	UNIT	QTY
	4000500	1/2"	Bag of 100	
	4000750	3/4"	Bag of 50	
	4001000	1"	Bag of 50	



PROJECT NAME \_\_\_\_\_ DATE \_\_\_\_\_

SUBMITTED BY \_\_\_\_\_ PHONE \_\_\_\_\_

ADDRESS \_\_\_\_\_



### PPSU-Couplings

SELECTED	PART#	TYPE	UNIT	QTY
	4015050	1/2" PEX x 1/2" PEX	Bag of 25	
	4017550	3/4" PEX x 1/2" PEX	Bag of 25	
	4017575	3/4" PEX x 3/4" PEX	Bag of 25	
	4011010	1" PEX x 1" PEX	Bag of 10	
	4011075	1" PEX x 3/4" PEX	Bag of 10	



### PPSU - Threaded Adapter, Male

SELECTED	PART#	TYPE	UNIT	QTY
	4025050	1/2" PEX x 1/2" NPT	Bag of 25	
	4025075	1/2" PEX x 3/4" NPT	Bag of 25	
	4027550	3/4" x 1/2" NPT	Bag of 25	
	4027575	3/4" x 3/4" NPT	Bag of 25	
	4021010	1" x 1" NPT	Bag of 10	



### PPSU - Threaded Adapter, Female

SELECTED	PART#	TYPE	UNIT	QTY
	4035050	1/2" PEX x 1/2" NPT	Bag of 25	
	4037575	3/4" PEX x 3/4" NPT	Bag of 25	
	4031010	1" PEX x 1" NPT	Bag of 10	



### PPSU - Plug

SELECTED	PART#	TYPE	UNIT	QTY
	4040500	1/2"	Bag of 25	
	4040750	3/4"	Bag of 25	
	4041000	1"	Bag of 10	



### PPSU - Elbow

SELECTED	PART#	TYPE	UNIT	QTY
	4065050	1/2" PEX x 1/2" PEX	Bag of 25	
	4067550	3/4" PEX x 1/2" PEX	Bag of 25	
	4067575	3/4" PEX x 3/4" PEX	Bag of 25	
	4061010	1" PEX x 1" PEX	Bag of 10	



### PPSU - Swivel Adapter

SELECTED	PART#	TYPE	UNIT	QTY
	4075151	1/2" PEX x 1/2" NPT, straight	Bag of 25	
	4075252	1/2" PEX x 1/2" NPT, elbow	Bag of 25	



Potable Parts Submittal

PROJECT NAME \_\_\_\_\_ DATE \_\_\_\_\_

SUBMITTED BY \_\_\_\_\_ PHONE \_\_\_\_\_

ADDRESS \_\_\_\_\_

LF BRASS FITTINGS



**PPSU - Threaded Elbow**

SELECTED	PART#	TYPE	UNIT	QTY
	4075038	1/2" PEX x 3/8" NPT, Male	Bag of 25	
	4075050	1/2" PEX x 1/2" NPT, Female	Bag of 25	
	4077550	3/4" PEX x 1/2" NPT, male	Bag of 25	
	4077575	3/4" PEX x 3/4" NPT, female	Bag of 25	



**PPSU - Tee**

SELECTED	PART#	TYPE	UNIT	QTY
	4095055	1/2" PEX x 1/2" PEX x 1/2" PEX	Bag of 25	
	4095057	1/2" PEX x 1/2" PEX x 3/4" PEX	Bag of 25	
	4097555	3/4" PEX x 1/2" PEX x 1/2" PEX	Bag of 25	
	4097557	3/4" PEX x 1/2" PEX x 3/4" PEX	Bag of 25	
	4097571	3/4" PEX x 3/4" PEX x 1" PEX	Bag of 10	
	4097575	3/4" PEX x 3/4" PEX x 1/2" PEX	Bag of 25	
	4097577	3/4" PEX x 3/4" PEX x 3/4" PEX	Bag of 25	
	4091011	1" PEX x 1" PEX x 1" PEX	Bag of 10	
	4091015	1" PEX x 1" PEX x 1/2" PEX	Bag of 10	
	4091017	1" PEX x 1" PEX x 3/4" PEX	Bag of 10	
	4091071	1" PEX x 3/4" PEX x 1" PEX	Bag of 10	
	4091077	1" PEX x 3/4" PEX x 3/4" PEX	Bag of 10	

**LF BRASS FITTINGS**

**PEX PRESS FITTINGS - LF BRASS**

MrPEX® Lead Free Brass fittings comply with NSF 61, which allows the product to contain no more than 0.25% lead. These fittings meet F1807. MrPEX Stainless Steel Press Sleeves and PEX Press tools are required and purchased separately.



**PEX Press Sleeves - Stainless Steel**

SELECTED	PART#	TYPE	UNIT	QTY
	4000500	1/2"	Bag of 100	
	4000750	3/4"	Bag of 50	
	4001000	1"	Bag of 50	



Potable Parts Submittal

PROJECT NAME \_\_\_\_\_ DATE \_\_\_\_\_

SUBMITTED BY \_\_\_\_\_ PHONE \_\_\_\_\_

ADDRESS \_\_\_\_\_

LF BRASS FITTINGS



**LF Brass - Drop Ear Elbow**

SELECTED	PART#	TYPE	UNIT	QTY
	4100055	1/2" PEX x 1/2" FIP	Bag of 10	
	4100077	3/4" PEX x 3/4" FIP	Bag of 10	
	4100157	1/2" PEX x 3/4" FIP	Bag of 10	



**LF Brass - Plug**

SELECTED	PART#	TYPE	UNIT	QTY
	4100500	1/2" PEX	Bag of 25	
	4100750	3/4" PEX	Bag of 25	
	4101000	1" PEX	Bag of 10	



**LF Brass - Coupling**

SELECTED	PART#	TYPE	UNIT	QTY
	4115050	1/2" PEX x 1/2" PEX	Bag of 25	
	4117550	3/4" PEX x 1/2" PEX	Bag of 25	
	4117575	3/4" PEX x 3/4" PEX	Bag of 25	
	4111010	1" PEX x 1" PEX	Bag of 10	
	4111075	1" PEX x 3/4" PEX	Bag of 10	



**LF Brass - Threaded Adapter, Male**

SELECTED	PART#	TYPE	UNIT	QTY
	4125050	1/2" PEX x 1/2" NPT	Bag of 25	
	4125075	1/2" PEX x 3/4" NPT	Bag of 25	
	4127510	3/4" PEX x 1" NPT	Bag of 10	
	4127575	3/4" PEX x 3/4" NPT	Bag of 25	
	4121010	1" PEX x 1" NPT	Bag of 10	
	4121075	1" PEX x 3/4" NPT	Bag of 10	



**LF Brass - Threaded Adapter, Female**

SELECTED	PART#	TYPE	UNIT	QTY
	4135050	1/2" PEX x 1/2" NPT	Bag of 25	
	4135075	1/2" PEX x 3/4" NPT	Bag of 25	
	4137510	3/4" PEX x 1" NPT	Bag of 10	
	4137575	3/4" PEX x 3/4" NPT	Bag of 25	
	4131010	1" PEX x 1" NPT	Bag of 10	

PROJECT NAME \_\_\_\_\_ DATE \_\_\_\_\_

SUBMITTED BY \_\_\_\_\_ PHONE \_\_\_\_\_

ADDRESS \_\_\_\_\_



### LF Brass - Sweat Adapter, Male

SELECTED	PART#	TYPE	UNIT	QTY
	4145050	1/2" PEX x 1/2" CU	Bag of 25	
	4145075	1/2" PEX x 3/4" CU	Bag of 25	
	4147510	3/4" PEX x 1" CU	Bag of 10	
	4147575	3/4" PEX x 3/4" CU	Bag of 25	
	4141010	1" PEX x 1" CU	Bag of 10	



### LF Brass - Sweat Adapter, Female

SELECTED	PART#	TYPE	UNIT	QTY
	4155050	1/2" PEX x 1/2" CU	Bag of 25	
	4155075	1/2" PEX x 3/4" CU	Bag of 25	
	4157510	3/4" PEX x 1" CU	Bag of 10	
	4157575	3/4" PEX x 3/4" CU	Bag of 25	
	4151010	1" PEX x 1" CU	Bag of 10	



### LF Brass - Elbow

SELECTED	PART#	TYPE	UNIT	QTY
	4165050	1/2" PEX x 1/2" PEX	Bag of 25	
	4167575	3/4" PEX x 3/4" PEX	Bag of 25	
	4161010	1" PEX x 1" PEX	Bag of 10	



### LF Brass - Threaded Elbow, Male

SELECTED	PART#	TYPE	UNIT	QTY
	4170055	1/2" PEX x 1/2" NPT	Bag of 25	
	4170057	1/2" PEX x 3/4" NPT	Bag of 25	
	4170071	3/4" PEX x 1" NPT	Bag of 10	
	4170077	3/4" PEX x 3/4" NPT	Bag of 25	



### LF Brass - Sweat Elbow, Male

SELECTED	PART#	TYPE	UNIT	QTY
	4180055	1/2" PEX x 1/2" CU	Bag of 25	
	4180057	1/2" PEX x 3/4" CU	Bag of 25	
	4180077	3/4" PEX x 3/4" CU	Bag of 25	



### LF Brass - Sweat Elbow, Female

SELECTED	PART#	TYPE	UNIT	QTY
	4180155	1/2" PEX x 1/2" CU	Bag of 25	
	4180157	1/2" PEX x 3/4" CU	Bag of 25	
	4180177	3/4" PEX x 3/4" CU	Bag of 25	
	4180111	1" PEX x 1" CU	Bag of 10	



Potable Parts Submittal

PROJECT NAME \_\_\_\_\_ DATE \_\_\_\_\_

SUBMITTED BY \_\_\_\_\_ PHONE \_\_\_\_\_

ADDRESS \_\_\_\_\_

\_\_\_\_\_

LF BRASS FITTINGS



**LF Brass - Tee**

SELECTED	PART#	TYPE	UNIT	QTY
	4195055	1/2" PEX x 1/2" PEX x 1/2" PEX	Bag of 25	
	4195057	1/2" PEX x 1/2" PEX x 3/4" PEX	Bag of 25	
	4197555	3/4" PEX x 1/2" PEX x 1/2" PEX	Bag of 25	
	4197557	3/4" PEX x 1/2" PEX x 3/4" PEX	Bag of 25	
	4197575	3/4" PEX x 3/4" PEX x 1/2" PEX	Bag of 25	
	4197577	3/4" PEX x 3/4" PEX x 3/4" PEX	Bag of 25	
	4191011	1" PEX x 1" PEX x 1" PEX	Bag of 10	
	4191015	1" PEX x 1" PEX x 1/2" PEX	Bag of 10	
	4191017	1" PEX x 1" PEX x 3/4" PEX	Bag of 10	
	4191051	1" PEX x 1/2" PEX x 1" PEX	Bag of 10	
	4191057	1" PEX x 1/2" PEX x 3/4" PEX	Bag of 10	
	4191071	1" PEX x 3/4" PEX x 1" PEX	Bag of 10	
	4191077	1" PEX x 3/4" PEX x 3/4" PEX	Bag of 10	

PROJECT NAME \_\_\_\_\_ DATE \_\_\_\_\_

SUBMITTED BY \_\_\_\_\_ PHONE \_\_\_\_\_

ADDRESS \_\_\_\_\_

## ACCESSORIES



### LF Brass - Inline Ball Valve, full port

SELECTED	PART#	TYPE	UNIT	QTY
	4100050	1/2" PEX x 1/2" PEX	Box of 10	
	4100075	3/4" PEX x 3/4" PEX	Box of 8	
	4100010	1" PEX x 1" PEX	Box of 4	



### LF Brass - Tub Ell, 6" x 2 1/4"

SELECTED	PART#	TYPE	UNIT	QTY
	4100057	1/2" PEX	Bag of 50	



### Tub/Shower Elbow

SELECTED	PART#	TYPE	UNIT	QTY
	4100155	1/2" PEX x 1/2" FIP	Bag of 50	



### Chrome Tube Sleeve

SELECTED	PART#	TYPE	UNIT	QTY
	4108104	1/2"	Bag of 10	



### Escution, Chrome

SELECTED	PART#	TYPE	UNIT	QTY
	4108105	1/2"	Box of 25	
	4108106	3/4"	Box of 25	



### Threaded Swivel Adapter, Straight, Plastic Nut

SELECTED	PART#	TYPE	UNIT	QTY
	4108107	1/2" PEX x 1/2" FIP	Box of 25	



### LF Brass - Stub Out Straight, 8", closed end

SELECTED	PART#	TYPE	UNIT	QTY
	4109001	1/2" PEX	Bag of 100	



### LF Brass - Stub Out Elbow, 3 1/2" x 8", closed end

SELECTED	PART#	TYPE	UNIT	QTY
	4109002	1/2" PEX	Bag of 50	



### LF Brass - Drop Ear Stub Out Elbow, 3 1/2" x 8", closed end

SELECTED	PART#	TYPE	UNIT	QTY
	4109003	1/2" PEX	Bag of 25	

PROJECT NAME \_\_\_\_\_ DATE \_\_\_\_\_

SUBMITTED BY \_\_\_\_\_ PHONE \_\_\_\_\_

ADDRESS \_\_\_\_\_



### LF Brass - Angle Stop

SELECTED	PART#	TYPE	UNIT	QTY
	4109053	1/2" PEX x 3/8" Comp.	Box of 24	



### LF Brass - Straight Stop

SELECTED	PART#	TYPE	UNIT	QTY
	4109153	1/2" PEX x 3/8" Comp.	Box of 24	



### LF Brass - Water Heater Flex Connector

SELECTED	PART#	TYPE	UNIT	QTY
	4109277	1 3/4" PEX x 3/4" FIP Swivel	Box of 10	



### LF Brass - Water Heater Flex Connector, w/ ball valve

SELECTED	PART#	TYPE	UNIT	QTY
	4109278	3/4" PEX x 3/4" FIP Swivel	Box of 25	



### LF Brass - Washing Machine Box

SELECTED	PART#	TYPE	UNIT	QTY
	4109301	1/2"	Each	



### LF Brass - Ice Maker Box

SELECTED	PART#	TYPE	UNIT	QTY
	4109302	1/2" PEX x 1/4" Comp.	Each	



### Tube Talon

SELECTED	PART#	TYPE	UNIT	QTY
	4101050	1/2"	Bag of 100	
	4101075	3/4"	Bag of 100	
	4101010	1"	Bag of 50	



### Stub Out Bracket, galvanized steel

SELECTED	PART#	TYPE	UNIT	QTY
	4108002	2" x 20"	Box of 50	



### Grommet for Galvanized Bracket or Metal Stud

SELECTED	PART#	TYPE	UNIT	QTY
	4108050	1/2"	Bag of 100	
	4108075	3/4"	Bag of 100	
	4108010	1"	Bag of 25	



Potable Parts Submittal

PROJECT NAME \_\_\_\_\_ DATE \_\_\_\_\_

SUBMITTED BY \_\_\_\_\_ PHONE \_\_\_\_\_

ADDRESS \_\_\_\_\_

\_\_\_\_\_

ACCESSORIES



**Nail Guard, 18ga, self nailing plates**

SELECTED	PART#	TYPE	UNIT	QTY
	4108101	1.5" x 3", single plate	Box of 100	
	4108102	3" x 5", double plate	Box of 100	
	4108103	1.5" x 5"	Box of 100	

**Metal Drop Ear Bend Support**

SELECTED	PART#	TYPE	UNIT	QTY
	7140501	1/2"	Bag of 25	



## TOOLS

### INSTALLATION TOOLS

MrPEX® Installation Tools features tube handling tools for PEX or PEX-AL-PEX as well as prep and press fitting tools for PEX-AL-PEX.



#### Compact Adjustable Tubing Uncoiler

SELECTED	PART#	TYPE	UNIT	QTY
	8110720	Heavy Duty	Each	



#### Pipe Cutter

SELECTED	PART#	TYPE	UNIT	QTY
	8110720	Heavy Duty	Each	



#### Simple Cutter

SELECTED	PART#	TYPE	UNIT	QTY
	8110720	Heavy Duty	Each	

### PRESS TOOLS



#### Manual Press Tool for PEX (F1807 & F2159)

SELECTED	PART#	TYPE	UNIT	QTY
	8400500	1/2" Stainless Steel Sleeves	Each	
	8400750	3/4" Stainless Steel Sleeves	Each	
	8401000	1" Stainless Steel Sleeves	Each	



#### Manual Press Tool for PEX (F1807 & F2159), Compact

SELECTED	PART#	TYPE	UNIT	QTY
	8110720	Heavy Duty	Each	



#### Manual Press Tool for PEX (F1807 & F2159), Combination

SELECTED	PART#	TYPE	UNIT	QTY
	8110720	Heavy Duty	Each	



#### Press Jaw for Battery Tool #8243000

SELECTED	PART#	TYPE	UNIT	QTY
	8410500	1/2" PEX Press		
	8410750	3/4" PEX Press		
	8411000	1" PEX Press		