

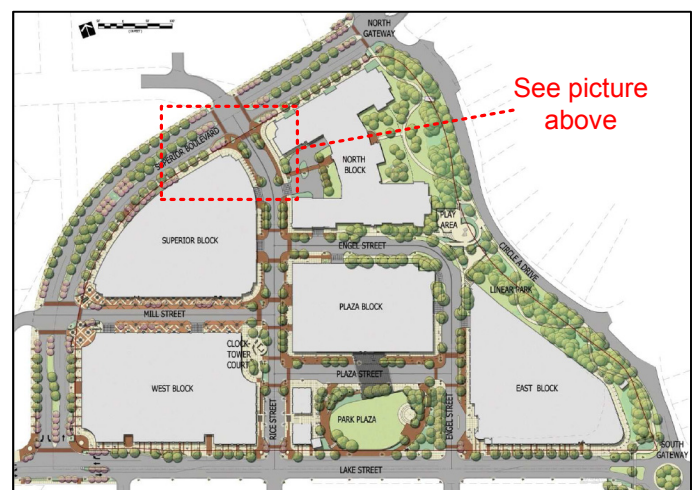
CASE STUDY



WAYZATA SNOW MELT

Upscale senior living demands snow & ice free streets and sidewalks.

This large re-development of the old Wayzata Mall is probably one of the largest undertakings of its kind. It is currently in phase 2 of 3, but when complete, the senior living community at The Promenade of Wayzata, will offer senior independent, assisted living, enhanced assisted living and memory care apartments as well as a full-skilled care center, all within a community built to be ecologically sensitive and sustainable. The community is part of a mixed use development on six blocks over 14.5 acres with shops and green areas. One of the challenges in developing this site was how to handle snow removal. After reviewing all the options, it was decided that melting the snow and ice on the site would be the best solution.



WAYZATA SNOW MELT

Project: Wayzata Bay Redevelopment

Project Type: Commercial Snow Melt

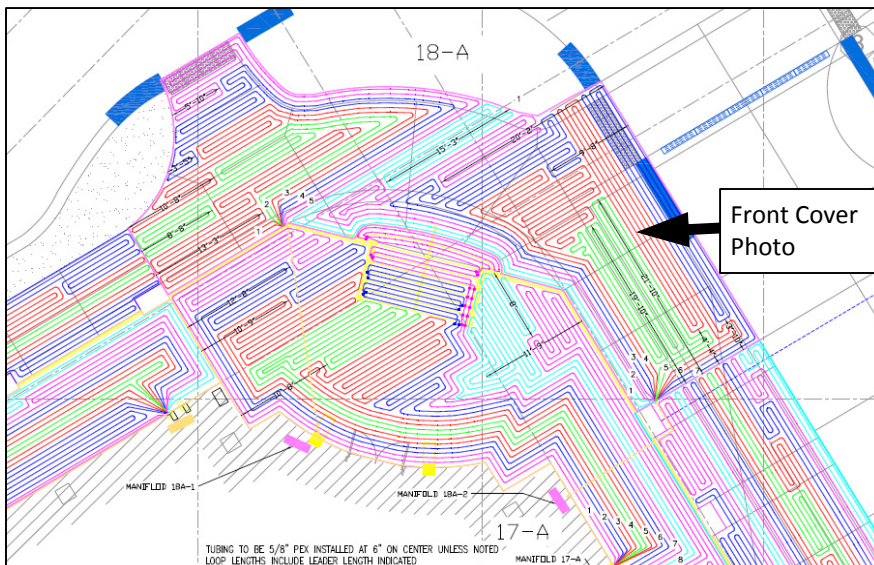
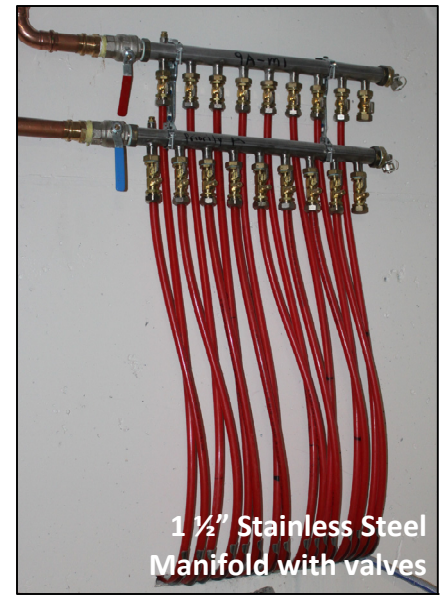
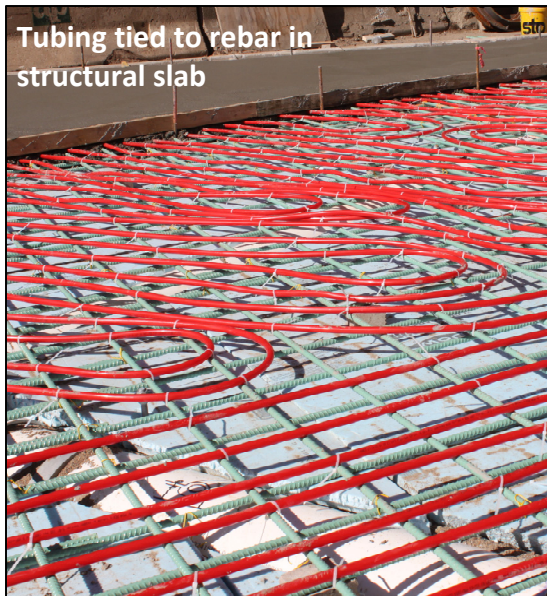
Location: Wayzata, MN

Developer: Senior Housing Partners

Engineer: KFI / Steen Engineering

Contractor: Associated Mechanical

Rep: Mondale & Associate



Project Summary, Phase I & II

SIZE: 160,000 sq.ft.

QTY OF TUBING: 350,000ft (66+ Miles)

TUBING SIZE: 5/8" and 3/4" Barrier PEX

TUBING SPACING: 6"

QTY MANIFOLDS: 160

QTY LOOPS: 1217