

Product Data Sheet



Brass 3 & 4 Way Valves

For Mixing or Diverting Applications

MrPEX 3-way and 4-way compact mixing valves of brass have been developed especially for small hydronic heating systems, boilers, heat exchangers and air heating/cooling applications. These valves can be used as mixing valves or as diverting valves. Because of their excellent control characteristics, they can control both supply and return lines. The valves can be mounted in any position, and are very suitable for motorizing due to their low torque. The valves are available for right-hand and left-hand mounting.



Technical Data

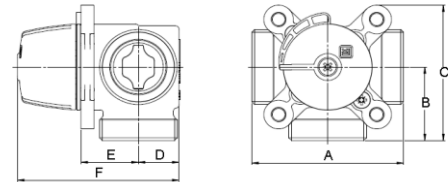
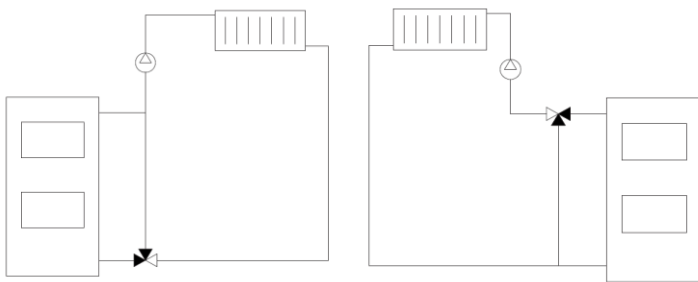
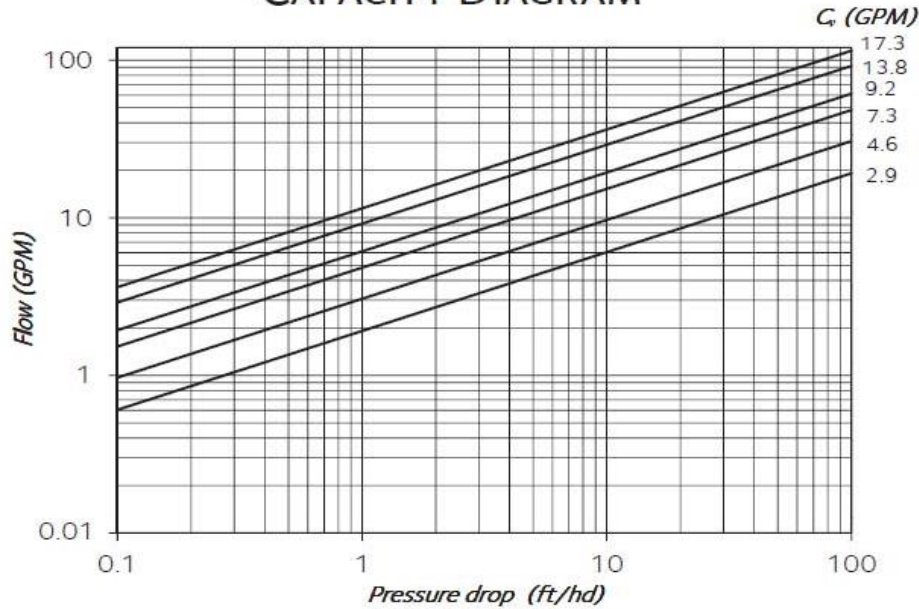
Working Temperature:	Min 41° F – Max. 230° F
Ambient Temperature:	Min 41° F – Max. 140° F
Max. Working Pressure:	145 psi (10 bar)
Max. Pressure Difference:	7 psi
Leakage:	< 0.5% of Cv at 7 psi
Angle of Rotation:	90°
Torque:	< 8.8 lb.in
Media:	Water – Glycol/Ethanol mix max 50%
Material, Valve Body:	Brass EN 12165 CW617N
Material, Slide/Spindle:	Brass EN 12164 CW614N
Material, O-rings:	EPDM
Motorizing:	Suitable for All Valve Motors
Connection:	Flat Gasket Sweat Union



Each valve is supplied with a set of flat gasket sweat unions. These are also sold separately as replacement items.

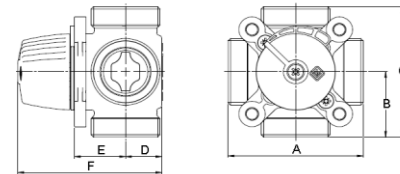
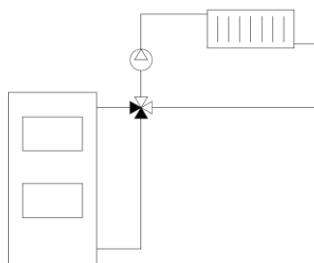
Brass 3 & 4 Way Valves

CAPACITY DIAGRAM



3-way Valves, specification

Part#	Cv GPM	Thread	A mm	B mm	C mm	D mm	E mm	F mm	lbs
5250325	4.6	G 1"	80	40	75	20	28	82	1.5
5250332	9.2	G 1 1/4"	82	41	76	22	31	87	1.8
5250340	17.3	G 1 1/2"	84	42	77	24	32	90	2



4-way Valves, specification

Part#	Cv GPM	Thread	A mm	B mm	C mm	D mm	E mm	F mm	lbs
5250425	4.6	G 1"	80	40	80	20	28	82	1.5
5250432	9.2	G 1 1/4"	82	41	82	22	31	87	1.8
5250440	17.3	G 1 1/2"	84	42	84	24	32	90	2

Ordering Info

Part#	Description	Type	Unit	List \$
5250325	3-way compact mixing valve of brass, Cv 4.6	G 1" x 3/4" Sweat	Each	\$ 141.00
5250332	3-way compact mixing valve of brass, Cv 9.2	G 1 1/4" x 1" Sweat	Each	\$ 165.00
5250340	3-way compact mixing valve of brass, Cv 17.3	G 1 1/2" x 1 1/4" Sweat	Each	\$ 177.00
5250425	4-way compact mixing valve of brass, Cv 4.6	G 1" x 3/4" Sweat	Each	\$ 154.00
5250432	4-way compact mixing valve of brass, Cv 9.2	G 1 1/4" x 1" Sweat	Each	\$ 184.00
5250440	4-way compact mixing valve of brass, Cv 17.3	G 1 1/2" x 1 1/4" Sweat	Each	\$ 199.00