



# PRODUCT CATALOG

RADIANT HEATING & COOLING | PLUMBING | SNOWMELT | CONTROLS



## ABOUT MrPEX® SYSTEMS

MrPEX® Systems is one of the leading North American system suppliers of residential and commercial radiant heating/cooling, snowmelt systems, and now offering, PEX-a domestic hot and cold water systems. We are a small but very experienced team on the fast track for growth in the USA and Canadian market. We are the exclusive providers of a unique PEX-a pipe from LK PEX AB in Sweden. As our core product, the MrPEX® PEX-a Tubing, is considerably more flexible, kink-resistant and able to hold more pressure than any other Pex Tubing on the market today, plus comes with an extensive 30 year warranty!

Combined with our highly technical knowledge and dedication to customer service, it's no wonder MrPEX® Systems is one of the fastest growing radiant system suppliers in North America.



## WHY MrPEX®?

MrPEX® Systems provides all components you need for a superior system, whether radiant heating/cooling, PEX-a plumbing, or snowmelt systems. This includes tubing, fittings, manifolds, controls and accessories that are matched for high performance and reliability over many years of service. When used together, these components provide trouble free installation and long-term reliability. The MrPEX® tubing and fittings meet current national standards of performance and dimensional tolerances. The system package and product offering is growing continually with an emphasis on taking advantage of sustainable energy sources whenever possible. Additionally, we also offer IDC, the state-of-the-art PC based intelligent control systems that delivers optimized comfort and maximized efficiency by coordinating HVAC, Indoor Air Quality, and Hydronic Systems in one control. IDC is also capable of energy monitoring and remote access from anywhere in the world.

## WHO IS MrPEX®?

MrPEX®—Tomas Lenman—started at Wirsbo Bruks AB in Sweden as a development engineer in 1971, developing the very first PEX process ever invented. He developed many Standard Specifications for PEX Tubing in Europe and Australia. MrPEX® wrote the ASTM F 876/877 for PEX Tubing during 1982 -84. In 1982 he co-authored the book "Water and Pipes". He founded and managed Wirsbo Company (USA) 1984 -1992 and continued consulting for this group until 1996. He authored the CSA B137.5 standard for PEX Tubing in 1989. MrPEX® managed the successful start-up of Roth Industries PEX Tubing Division 1997 -2001 after which he started his own radiant floor heating company: MrPEX® Systems using PEX Tubing with exclusive distribution in North America for LK PEX AB in Sweden. The unique production process is invented by Mr. Lennart Aagren of Sweden, previously manager of Uponor Innovation AB for many years, and his second innovation of a PEX Tubing manufacturing process. No one has more knowledge and experience with PEX Tubing and Radiant Floor Heating Systems than MrPEX®.

# TABLE OF CONTENTS

## RADIANT HEATING

Tubing.....	2	Compression Fittings for PEX-AL-PEX Tubing .....	13
MrPEX® PEX-a Tubing w/ Oxygen Barrier .....	2	PEX Fittings .....	14
MrPEX® PEX-AL-PEX Tubing .....	3	F2159 PPSU PEX Press Fittings .....	14
Manifolds .....	4	F1807 PEX Press Fittings - LF Brass .....	15
1 1/4" Stainless Steel Manifolds for up to 5/8" PEX & PEX-AL-PEX Tubing, 2-12 Loops.....	4	F1960 PPSU PEX Expansion Fittings .....	16
Composite Manifold for Up To 5/8" PEX & PEX-AL-PEX Tubing, 2-12 Loops .....	5	F1960 PEX Expansion Fittings - LF Brass .....	17
1 1/2" Large Brass Manifolds for 5/8" & 3/4" PEX & PEX-AL-PEX Tubing, 2-12 Loops.....	6	Axial Press Fittings F2080 for PEX Tubing.....	19
1 1/2" Large Stainless Steel Manifolds for 5/8" & 3/4" PEX & PEX-AL-PEX Tubing .....	7	Controls .....	21
Manifold Fittings .....	9	Zoning Controls.....	21
Manifold Options .....	9	SnowMelt Controls .....	22
Copper Manifold Accessories .....	10	Mixing Controls .....	23
PEX Fittings .....	11	Integrated Dynamic Control .....	25
PEX Fittings & Euroconus (EK) Fittings .....	11	Tools & Accessories .....	26
PEX-AL-PEX Fittings .....	12	Heat Transfer Accessories .....	26
Press Fittings for PEX-AL-PEX Tubing .....	12	Manifold Cabinets .....	27
		Tube Fasteners & Organizers .....	28
		Installation Tools.....	29
		Spare Parts .....	33
		Limited Warranty .....	35

## PRE-INSULATED TUBING

Pre-Insulated PEX-a Tubing.....	36	Limited Warranty .....	39
Accessories.....	37		

## PLUMBING

Tubing.....	40	F2159 PEX Press Fittings - PPSU .....	47
MrPEX® Potable PEX-a Tubing .....	40	F1960 PEX Expansion Fittings - PPSU .....	49
MrPEX Potable Pipe-In-Pipe PEX-a Tubing .....	42	LF Brass Fittings.....	51
Multiport Tees .....	43	F1807 PEX Press Fittings - LF Brass .....	51
Composite Multiport Tee's, F2159 Fittings .....	43	F1960 PEX Expansion Fittings - LF Brass.....	54
Copper Multiport Tee's, F1807 Fittings w/ 1" Copper Body.....	45	Accessories .....	57
Copper Manifolds w/ Ball Valves .....	46	Plumbing Tools .....	60
Copper Manifold w/ Valves, LF Brass F1807 Fittings w/ 1" Copper Body.....	46	Installation Tools.....	60
PPSU Fittings.....	47	Notes .....	61
		Loop CAD.....	64
		Limited Warranty .....	65

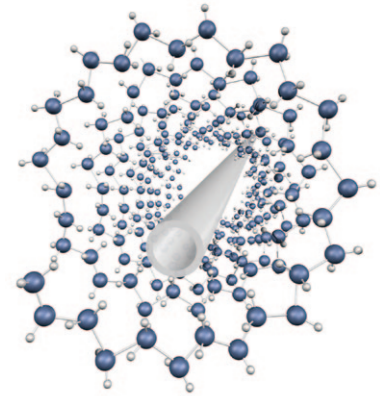


## TUBING

A Slinky® is suspended on elastic threads around itself. There is no reinforcement along its length. Thus making it remarkably flexible and free to move. The shape remains round. It never kinks, although the bending radius is minimal.

Similarly, PEX molecular chains extend around the tubing like the Slinky® string circles around itself. This makes MrPEX® Tubing extremely flexible and less likely to kink. The molecular chain is aligned to resist stress around its perimeter. It is unusually strong, resisting inside pressure.

The molecular orientation is achieved during extrusion in a very unique process. Crosslinking occurs simultaneously with the orientation. Peroxide crosslinking guarantees optimal tubing properties.



### Oxygen Diffusion

MrPEX® Barrier PEX Tubing has an Oxygen Diffusion Barrier which meets the stringent requirements of the European DIN 4726 standard. This standard restricts the amount of oxygen that is allowed to permeate the pipe and affect corrodible cast iron or steel components within the system. The standard restricts permeation to less than or equal to 0.10 g/(m<sup>3</sup> d). This is considered to be a safe level.

## MrPEX® PEX-a TUBING W/ OXYGEN BARRIER

MrPEX® Barrier PEX tubing is Cross-Linked Polyethylene (PEX-a) manufactured in accordance with ASTM F 876. Tubing is listed to ASTM F 876/877 (CSA B137.5) and ICC-PMG 1053, and also certified by NSF (NSF-rfh). MrPEX® Barrier PEX tubing is rated by the Hydrostatic Stress Board of PPI (Plastics Pipe Institute) at: 160 psi at 73.4°F; 100 psi at 180°F; 80 psi at 200°F. MrPEX® Barrier PEX tubing has an EVOH oxygen barrier that meet DIN 4726. Tubing sizes 3/8" through 3/4" also has a thin coating of PE on top of the barrier in order to reduce noise when installed in joist applications and Aluminum heat transfer plates.



PART#	TYPE	UNIT
1210060	3/8"	600 ft. Coil
1210100	3/8"	1000 ft. Coil
1220030	1/2"	300 ft. Coil
1220050	1/2"	500 ft. Coil
1220100	1/2"	1000 ft. Coil
1220120	1/2"	1200 ft. Coil
1220160	1/2"	1600 ft. Coil
1230030	5/8"	300 ft. Coil
1230033	5/8"	330 ft. Coil
1230050	5/8"	500 ft. Coil
1230100	5/8"	1000 ft. Coil
1230110	5/8"	1100 ft. Coil
1240010	3/4"	100 ft. Coil
1240030	3/4"	300 ft. Coil

### MrPEX® PEX-a Tubing w/ Oxygen Barrier (cont.)

PART#	TYPE	UNIT
1240040	3/4"	400 ft. Coil
1240050	3/4"	500 ft. Coil
1241020	3/4"	Bag of 10 - 20ft Sticks
1250010	1"	100 ft Coil
1250030	1"	300 ft Coil
1251020	1"	Bag of 10 - 20ft Sticks
1260015	1"-1/4"	150 ft Coil
1261010	1"-1/4"	Bag of 5 - 20ft Sticks
1270015	1"-1/2"	150 ft Coil
1271010	1"-1/2"	Bag of 5 - 20ft Sticks
1280020	2"	200 ft Coil
1281010	2"	Bag of 5 - 20ft Sticks

### MrPEX® PEX-AL-PEX TUBING

MrPEX® PEX-AL-PEX tubing is a composite pipe manufactured to ASTM F 1281-2005 (CSA B137.10). MrPEX® PEX-AL-PEX tubing is certified by NSF (NSF-rfh) and temperature/pressure rated by the Hydrostatic Stress Board of PPI (Plastics Pipe Institute) in accordance with ASTM F 1281-2005 (CSA B137.10) to 160 psi at 200°F. Not for potable water.

PART#	TYPE	UNIT
1320025	1/2"	250 ft Orange Coil
1320030	1/2"	300 ft Orange Coil
1320100	1/2"	1000 ft Orange Coil
1321080	1/2"	Tube of 40 - 20 ft Orange Sticks
1322030	1/2"	Box of 3 - 100 ft Orange Coils
1330040	5/8"	400 ft Orange Coil
1330050	5/8"	500 ft Orange Coil
1340030	3/4"	300 ft Orange Coil
1340050	3/4"	500 ft Orange Coil
1341032	3/4"	Tube of 16 - 20 ft Orange Sticks
1342020	3/4"	Box of 2 - 100 ft Orange Coils
1350010	1"	100 ft Orange Coil
1350030	1"	300 ft Orange Coil
1350050	1"	500 ft Orange Coil
1351020	1"	Tube of 10 - 20 ft Orange Sticks



# MANIFOLDS

## 1 1/4" STAINLESS STEEL MANIFOLDS FOR UP TO 5/8" PEX & PEX-AL-PEX TUBING, 2-12 LOOPS

MrPEX® 1 1/4" Stainless Steel manifolds achieves the highest level of long term corrosion resistance by using a bright annealed high-grade, Type 304, stainless steel with high nickel content. This creates a stable material structure with low levels of ferrite and magnetism. To eliminate the possibility of contact corrosion. The manifolds are fully assembled, ready for mounting. The supply side feature adjustable flowmeters for flows up to 1.45 gpm per loop, and the return side has balancing on/off valves, in accordance with DIN EN 1264-4. The adjustable flow meter allows for a positive shut-off and the manual plastic cap on the return valve can be removed to accommodate a valve actuator #5120700 or #5120701. The return balancing valve disc is designed to enable exact adjustments of small flows while still being able to handle large flow with minimal resistance. The branch Cv value is 1.38 and the manifold body accommodates flows up to 14 gpm. The supply and return manifold bodies both have wells to accommodate optional thermometers, and a multi-function swivel End Cap allowing for Fill/Drain or Vent. Each inlet of the manifold has a G 1" thread (BSP straight metric thread) allowing for easy connections of the supply and return mains. Use only "MrPEX® Manifold Option" adapters for appropriate connection. The branches have Eurokonus (EK 20) connections, and all MrPEX® EK 20 compression fitting assemblies (PEX to EK 20 or PEX-AL-PEX to EK 20) can be used to connect tubing to the manifold.



\* Shipped as shown

### MrPEX® 1 1/4" Stainless Steel Manifold

PART#	TYPE	UNIT
3230200	2 Branches	Each
3230300	3 Branches	Each
3230400	4 Branches	Each
3230500	5 Branches	Each
3230600	6 Branches	Each
3230700	7 Branches	Each
3230800	8 Branches	Each
3230900	9 Branches	Each
3231000	10 Branches	Each
3231100	11 Branches	Each
3231200	12 Branches	Each



### MrPEX® Manifold Thermometer

PART#	TYPE	UNIT
3230001	32°F - 175°F	Set of 2



### Manifold Transition Ball Valve for 1 1/4" Manifolds

PART#	TYPE	UNIT
3620019	1" BSP Union to 1" Female NPT Straight	Box of 2
3620021	1" BSP Angle Isolation Union to 1" Female NPT	Box of 2

## COMPOSITE MANIFOLD FOR UP TO 5/8" PEX & PEX-AL-PEX TUBING, 2-12 LOOPS

MrPEX® Composite Radiant Manifold is made from a durable high performance glass filled plastic designed to withstand high temperature and pressure. The manifold exceeds the oxygen diffusion standard DIN 4726 and is completely corrosion resistant. The manifold has flow capacity of 15.4 GPM with adjustable flowmeters for flows up to 1.00 GPM per loop, and comes partially assembled as a complete kit. The branch Cv value is 1.35.

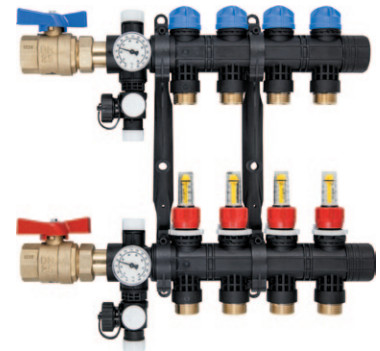
Kit includes:

- A complete supply body with positive shut-off balancing flowmeters, thermometer, a Fill/Drain valve with Vent, and a blank end cap.
- A complete return body with on/off valves for manual shut-off, thermometer, a Fill/Drain valve with Vent, and a blank end cap.
- A set of mounting brackets
- A set of 1" NPT isolation union ball-valves.

Plastic cap on the return valve can be removed to accommodate valve actuator #5120700 or #5120701 (Adapter VA 90 part #5700090 is included). The branches have Eurokonus (EK 20) connections, and all MrPEX® EK 20 compression fitting assemblies (PEX to EK 20 or PEX-AL-PEX to EK 20) can be used to connect tubing up to 5/8" to the manifold. Single, 2 loop, and 3 loop add-on supply and return manifold sections and other accessories are sold separately to allow for easy add-on.

### Composite Manifold, Valve & Flowmeter, Complete Kit

PART#	TYPE	UNIT
3810200	2 Loop	Each
3810300	3 Loop	Each
3810400	4 Loop	Each
3810500	5 Loop	Each
3810600	6 Loop	Each
3810700	7 Loop	Each
3810800	8 Loop	Each
3810900	9 Loop	Each
3811000	10 Loop	Each
3811100	11 Loop	Each
3811200	12 Loop	Each



\* Shipped as kit

### Composite Manifold Sections, Valve & Flowmeter

PART#	TYPE	UNIT
3810001	1 Loop	Each
3810002	2 Loop	Each
3810003	3 Loop	Each



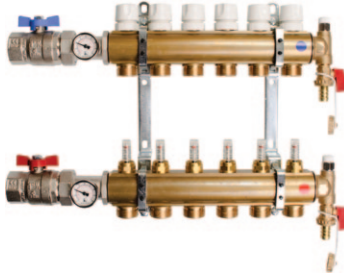
### Composite Manifold Elbow Set

PART#	TYPE	UNIT
3810007	G 1" x G 1" Flat Gasket	Set of 2



## 1 1/2" LARGE BRASS MANIFOLDS FOR 5/8" & 3/4" PEX & PEX-AL-PEX TUBING, 2-12 LOOPS

MrPEX® 1 1/2" Large Brass Manifolds are made from high-quality extruded brass and offered in 2-12 loop fully assembled manifolds. The supply body has balancing valves with adjustable flowmeters for flows up to 2.0 gpm per loop. The return body is equipped with on/off valves. The manual plastic cap on the return valve can be removed to accommodate a valve actuator #5120700 or #5120701. Actuator valve adapter #5700010 (VA-10) needs to be purchased separately with the actuator #5120700 or #5120701. The return balancing valve disc is designed to enable exact adjustments of small flows while still being able to handle large flow with minimal resistance. The branch Cv value is 1.3 and the manifold body accommodates flows up to 20 gpm. Manifolds are mounted on brackets ready to mount. Inlets comes with a 1 1/4" female NPT union ball-valve and end caps feature vent and fill/drain. The branches have EK 25 (Eurokonus) connections, and all MrPEX® EK 25 fitting assemblies (PEX to EK25 or PEX-AL-PEX to EK 25) can be used to connect tubing to the manifold.



\* Shipped as shown

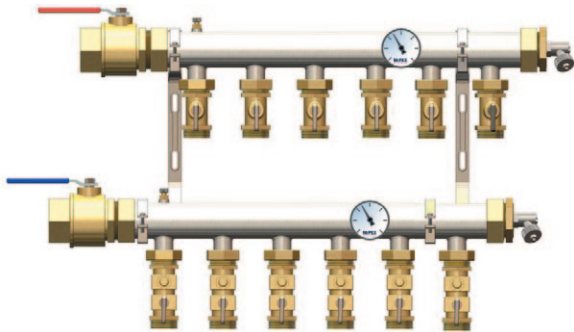
### 1 1/2" Manifold, Valve & Flowmeter, Fully Assembled

PART#	TYPE	UNIT
3310200	2 Branches	Each
3310300	3 Branches	Each
3310400	4 Branches	Each
3310500	5 Branches	Each
3310600	6 Branches	Each
3310700	7 Branches	Each
3310800	8 Branches	Each
3310900	9 Branches	Each
3311000	10 Branches	Each
3311100	11 Branches	Each
3311200	12 Branches	Each





## 1 1/2" LARGE STAINLESS STEEL MANIFOLDS FOR 5/8" & 3/4" PEX & PEX-AL-PEX TUBING



MrPEX® 1 1/2" Large Stainless Steel Manifolds are made from high-quality Type 304 stainless steel and offered in 3–10 loop sections. The manifold body comes with G 1 1/2" flat gasket unions for connection of inlet ball valve G 1 1/2" x 1 1/2" Female NPT and end caps. The branches comes with G 1" flat gasket unions to accommodate the on/off and balancing branch valves G 1" x EK 25 for easy connection with MrPEX® EK 25 fitting assemblies (PEX to EK 25 or PEX-AL-PEX to EK 25) to connect tubing to the manifold. The branch Cv value is 6 and the manifold body accommodates flows up to 25 gpm. The manifold Base Kit comes with two brackets, two 1 1/2" female NPT ball-valves and two End Caps with fill/drain.

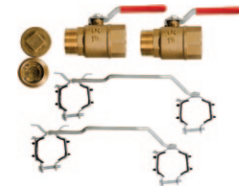
### 1 1/2" Stainless Steel Manifold, Supply & Return Body, G 1" Branch Union, 3" O.C.

PART#	TYPE	UNIT
3240300	3 Branches	Set of 2
3240400	4 Branches	Set of 2
3240500	5 Branches	Set of 2
3240600	6 Branches	Set of 2
3240700	7 Branches	Set of 2
3240800	8 Branches	Set of 2
3240900	9 Branches	Set of 2
3241000	10 Branches	Set of 2



### Base Kit for 1 1/2" Stainless Manifold, Ball-Valves, Bracket & End Caps w/ Fill/Drain Valve

PART#	TYPE	UNIT
3240001	1 1/2" FIP Connection	Each



### On/Off Loop Valve for 1 1/2" Stainless Steel Manifolds

PART#	TYPE	UNIT
3240002	G 1" x EK 25	Box of 10



### On/Off Loop Valve w/ Balancing for 1 1/2" Stainless Steel Manifolds

PART#	TYPE	UNIT
3240003	G 1" x EK 25	Box of 10





**Manifold Union for 1 1/2" Stainless Steel Manifold**

PART#	TYPE	UNIT
3240004	G 1 1/2" x G 1 1/2"	Set of 2



**Visual Flowmeter w/ Balancing/Isolation Valve, 2-8 GPM**

PART#	TYPE	UNIT
3240006	G 1" x EK 25	Each



**Strap On Pipe Thermometer, 70-200°F**

PART#	TYPE	UNIT
5240748	For Pipes 1/2" - 4"	Box of 2



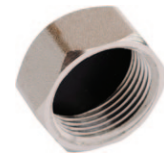
# MANIFOLD FITTINGS

## MANIFOLD OPTIONS

MrPEX® Manifold Options offer transitions, end caps and accessories for MrPEX® manifolds. Some of the 1 1/4" manifolds and transitions feature a 1" BSP metric straight thread using an o-ring seal. Do Not Use teflon tape or thread sealing compounds for these.

### Loop End Cap

PART#	TYPE	UNIT
3610003	EK 20	Bag of 2
3610004	EK 25	Bag of 2



### Pressure Test Kit for 1 1/4" Brass & Stainless Steel Manifolds

PART#	TYPE	UNIT
3610005	1" BSP	Each



### Pressure Test Kit for Composite Manifolds & all 1" NPT Connections

PART#	TYPE	UNIT
3700183	1" NPT	Each



### Pressure Test Kit for 1 1/2" Brass & Stainless Steel Manifolds

PART#	TYPE	UNIT
3700184	1 1/2" & 1 1/4" NPT	Each



### Manifold Transition for 1 1/4" Brass & Stainless Steel

PART#	TYPE	UNIT
3620001	1" BSP to 1" & 1 1/4" CU	Bag of 2
3620002	1" BSP to 3/4" NPT	Bag of 2
3620003	1" BSP to 1" NPT	Bag of 2
3620004	1" BSP to 1" FIP	Bag of 2
3620005	1" BSP to 1" BSP (Manifold Double Nipple)	Bag of 2
3620006	1" BSP to EK 25	Bag of 2
3620007	1" BSP to EK 32	Bag of 2





### Large Dimension PEX 'Push-Fit' Transition

PART#	TYPE	UNIT
4467575	3/4" PEX x 3/4" NPT	Each
4461010	1" PEX x 1" NPT	Each
4461313	1 1/4" PEX x 1 1/4" NPT	Each
4461515	1 1/2" PEX x 1 1/2" NPT	Each
4462020	2" PEX x 2" NPT	Each



### Disconnect Tool for PEX 'Push-Fit' Transition

PART#	TYPE	UNIT
4460001	3/4"	Each
4460002	1"	Each
4460003	1 1/4"	Each
4460004	1 1/2"	Each
4460005	2"	Each

## COPPER MANIFOLD ACCESSORIES

MrPEX® Copper Manifold accessories offer Copper Sweat x EK (Eurokonus) mini-ball valves, allowing PEX or PEX-AL-PEX Compression fittings to be connected for pipes up to 3/4".



### Mini Ball Valve

PART#	TYPE	UNIT
3465020	1/2" CU to EK 20	Box of 10
3467525	3/4" CU to EK 25	Box of 10



### Mini Ball Valve w/ Balancing

PART#	TYPE	UNIT
3465021	1/2" CU to EK 20	Box of 10
3467526	3/4" CU to EK 25	Box of 10





# PEX FITTINGS

## PEX FITTINGS & EUROCONUS (EK) FITTINGS

MrPEX® Compression Fitting Assemblies for connection of MrPEX® Barrier PEX tubing to MrPEX® Manifolds or transition fittings with EK (Eurokonus) connection. Fittings consists of a nut, insert and compression ring made of nickel plated brass. Insert features o-ring and EK (Eurokonus) seat.

### PEX Fitting Assembly (Nut Ring & Insert) for EK

PART#	TYPE	UNIT
4310375	3/8" PEX to EK 20	Bag of 10
4310500	1/2" PEX to EK 20	Bag of 10
4310625	5/8" PEX to EK 20	Bag of 10
4310750	3/4" PEX to EK 20	Bag of 10
4320625	5/8" PEX to EK 25	Bag of 10
4320750	3/4" PEX to EK 25	Bag of 10
4331000	1" PEX to EK 32	Bag of 10



### Copper Sweat Transition

PART#	TYPE	UNIT
4342050	EK 20 to 1/2" & 3/4" CU	Bag of 10
4342575	EK 25 to 3/4" & 1" CU	Bag of 10



### NPT Transition

PART#	TYPE	UNIT
4372050	EK 20 to 1/2" NPT	Bag of 10
4372575	EK 25 to 3/4" NPT	Bag of 10
4372510	EK 25 to 1" NPT	Bag of 2
4373210	EK 32 to 1" NPT	Bag of 2



### Coupling Nipple

PART#	TYPE	UNIT
4352020	EK 20 to EK 20	Bag of 10
4352525	EK 25 to EK 25	Bag of 10
4353232	EK 32 to EK 32	Bag of 10



# PEX-AL-PEX FITTINGS

## PRESS FITTINGS FOR PEX-AL-PEX TUBING

MrPEX® Press Fittings for use with MrPEX® ASTM F1281-2005 PEX-AL-PEX tubing in radiant applications. The body is made from DZR brass, double o-rings, and a stainless steel press sleeve. An accurately installed press fitting offers a fast, reliable, and permanent connection.

NOTE: Must use reamer on any PEX-AL-PEX fittings



### Press Fitting Assemblies

PART#	TYPE	UNIT
2110500	1/2" PAP to EK 20	Bag of 10
2110625	5/8" PAP to EK 20	Bag of 10



### Press Couplings DZR

PART#	TYPE	UNIT
2315050	1/2" PAP to 1/2" PAP	Bag of 10
2216363	5/8" PAP to 5/8" PAP	Bag of 10
2317575	3/4" PAP to 3/4" PAP	Bag of 10
2311010	1" PAP to 1" PAP	Bag of 5



### Press Transition to NPT DZR

PART#	TYPE	UNIT
2325050	1/2" PAP to 1/2" NPT	Bag of 10
2325075	1/2" PAP to 3/4" NPT	Bag of 10
2226375	5/8" PAP to 3/4" NPT	Bag of 10
2327575	3/4" PAP to 3/4" NPT	Bag of 10
2321010	1" PAP to 1" NPT	Bag of 5



### Press Sweat Adapter DZR

PART#	TYPE	UNIT
2355050	1/2" PAP to 1/2" CU	Bag of 10
2355075	1/2" PAP to 3/4" CU	Bag of 10
2357575	3/4" PAP to 3/4" CU	Bag of 10
2351010	1" PAP to 1" CU	Bag of 5



### Press Transition to FIP DZR

PART#	TYPE	UNIT
2335050	1/2" PAP to 1/2" FIP	Bag of 10
2337575	3/4" PAP to 3/4" FIP	Bag of 10
2331010	1" PAP to 1" FIP	Bag of 5

### Press Elbow DZR

PART#	TYPE	UNIT
2365050	1/2" PAP to 1/2" PAP	Bag of 10
2367575	3/4" PAP to 3/4" PAP	Bag of 10
2361010	1" PAP to 1" PAP	Bag of 5



### Press Elbow to Sweat Adapter DZR

PART#	TYPE	UNIT
2380057	1/2" PAP to 3/4" CU	Bag of 10
2380077	3/4" PAP to 3/4" CU	Bag of 10



### Press Tee DZR

PART#	TYPE	UNIT
2397577	3/4" PAP x 3/4" PAP x 3/4" PAP	Bag of 10
2391011	1" PAP x 1" PAP x 1" PAP	Bag of 5

## COMPRESSION FITTINGS FOR PEX-AL-PEX TUBING

MrPEX® Compression Fitting Assemblies for connection of MrPEX® PEX-AL-PEX tubing to MrPEX® Manifolds or transition fittings with EK (Eurokonus) connection. Fittings consist of a nut, insert and compression ring made of brass. Insert features double o-ring and EK (Eurokonus) seat.

### PEX-AL-PEX Fitting Assemblies

PART#	TYPE	UNIT
2410500	1/2" PAP to EK 20	Bag of 10
2410625	5/8" PAP to EK 20	Bag of 10
2430750	3/4" PAP to EK 25	Bag of 10



### PEX-AL-PEX Repair Coupling w/ Fitting Assembly

PART#	TYPE	UNIT
2421010	1" PAP to 1" PAP	Bag of 10



### PEX-AL-PEX Transition w/ Fitting Assembly

PART#	TYPE	UNIT
2445050	1/2" PAP to 1/2" NPT	Bag of 10
2446375	5/8" PAP to 3/4" NPT	Bag of 10
2447575	3/4" PAP to 3/4" NPT	Bag of 10
2441010	1" PAP to 1" NPT	Bag of 10
2456375	5/8" PAP to 3/4" FIP	Bag of 10
2457575	3/4" PAP to 3/4" FIP	Bag of 10
2451010	1" PAP to 1" FIP	Bag of 10
2461013	1" PAP to 1 1/4" CU	Bag of 10



# PEX FITTINGS

## F2159 PPSU PEX PRESS FITTINGS

MrPEX® plastic fittings are made from a blend of engineered high performance PolyPhenylSulfone (PPSU) resin to achieve a long-term durable product. These PPSU fittings are durable, light weight, corrosion free, and resistant to chlorine and other substances that may be present in today's potable water supply. The Sulfone resin has been used and refined over the past 20 years and has proven a very reliable replacement for brass and copper fittings. MrPEX® fittings are listed to ASTM F2159. MrPEX® Stainless Steel Press Sleeves and PEX Press tools are required and purchased separately.



### PEX Press Sleeves – Stainless Steel for F2159 & F1807

PART#	TYPE	UNIT
4000500	1/2" PEX	Bag of 100
4000750	3/4" PEX	Bag of 50
4001000	1" PEX	Bag of 50



### F2159 PPSU – Couplings

PART#	TYPE	UNIT
4015050	1/2" PEX x 1/2" PEX	Bag of 25
4017575	3/4" PEX x 3/4" PEX	Bag of 25
4011010	1" PEX x 1" PEX	Bag of 10



### F2159 PPSU – Threaded Adapter, Male

PART#	TYPE	UNIT
4025050	1/2" PEX x 1/2" NPT	Bag of 25
4025075	1/2" PEX x 3/4" NPT	Bag of 25
4027575	3/4" PEX x 3/4" NPT	Bag of 25
4021010	1" PEX x 1" NPT	Bag of 10



### F2159 PPSU – Elbow

PART#	TYPE	UNIT
4065050	1/2" PEX x 1/2" PEX	Bag of 25
4067575	3/4" PEX x 3/4" PEX	Bag of 25
4061010	1" PEX x 1" PEX	Bag of 10



1st, 2nd, & 3rd Measurements

### F2159 PPSU – Tee

PART#	TYPE	UNIT
4097571	3/4" PEX x 3/4" PEX x 1" PEX	Bag of 10
4097577	3/4" PEX x 3/4" PEX x 3/4" PEX	Bag of 25
4091011	1" PEX x 1" PEX x 1" PEX	Bag of 10
4091017	1" PEX x 1" PEX x 3/4" PEX	Bag of 10
4091071	1" PEX x 3/4" PEX x 1" PEX	Bag of 10
4091077	1" PEX x 3/4" PEX x 3/4" PEX	Bag of 10



## F1807 PEX PRESS FITTINGS - LF BRASS

MrPEX® Lead Free Brass fittings comply with NSF 61, which allows the product to contain no more than 0.25% lead. These fittings meet F1807. MrPEX Stainless Steel Press Sleeves and PEX Press tools are required and purchased separately.

### F1807 LF Brass - Coupling

PART#	TYPE	UNIT
4115050	1/2" PEX x 1/2" PEX	Bag of 25
4117575	3/4" PEX x 3/4" PEX	Bag of 25
4111010	1" PEX x 1" PEX	Bag of 10



### F1807 LF Brass - Threaded Adapter, Male

PART#	TYPE	UNIT
4125075	1/2" PEX x 3/4" NPT	Bag of 25
4127575	3/4" PEX x 3/4" NPT	Bag of 25
4127510	3/4" PEX x 1" NPT	Bag of 10
4121010	1" PEX x 1" NPT	Bag of 10
4121075	1" PEX x 3/4" NPT	Bag of 10



### F1807 LF Brass - Sweat Adapter, Male

PART#	TYPE	UNIT
4145050	1/2" PEX x 1/2" CU	Bag of 25
4145075	1/2" PEX x 3/4" CU	Bag of 25
4147510	3/4" PEX x 1" CU	Bag of 10
4147575	3/4" PEX x 3/4" CU	Bag of 25
4141010	1" PEX x 1" CU	Bag of 10



### F1807 LF Brass - Sweat Adapter, Female

PART#	TYPE	UNIT
4155050	1/2" PEX x 1/2" CU	Bag of 25
4155075	1/2" PEX x 3/4" CU	Bag of 25
4157510	3/4" PEX x 1" CU	Bag of 10
4157575	3/4" PEX x 3/4" CU	Bag of 25
4151010	1" PEX x 1" CU	Bag of 10



### F1807 LF Brass - Sweat Elbow, Female

PART#	TYPE	UNIT
4180155	1/2" PEX x 1/2" CU	Bag of 25
4180157	1/2" PEX x 3/4" CU	Bag of 25
4180177	3/4" PEX x 3/4" CU	Bag of 25
4180111	1" PEX x 1" CU	Bag of 10



## F1960 PPSU PEX EXPANSION FITTINGS



### F1960 PEX Ring

PART#	TYPE	UNIT
4600500	1/2" PEX	Bag of 50
4600750	3/4" PEX	Bag of 25
4601000	1" PEX	Bag of 10



### F1960 PPSU - Coupling

PART#	TYPE	UNIT
4615050	1/2" PEX x 1/2" PEX	Bag of 25
4617575	3/4" PEX x 3/4" PEX	Bag of 25
4611010	1" PEX x 1" PEX	Bag of 10



### F1960 PPSU - Elbow

PART#	TYPE	UNIT
4665050	1/2" PEX x 1/2" PEX	Bag of 25
4667575	3/4" PEX x 3/4" PEX	Bag of 10
4661010	1" PEX x 1" PEX	Bag of 10



### F1960 PPSU - Tee

PART#	TYPE	UNIT
4691011	1" PEX x 1" PEX x 1" PEX	Bag of 10
4691017	1" PEX x 1" PEX x 3/4" PEX	Bag of 10
4691071	1" PEX x 3/4" PEX x 1" PEX	Bag of 10
4691077	1" PEX x 3/4" PEX x 3/4" PEX	Bag of 10
4697577	3/4" PEX x 3/4" PEX x 3/4" PEX	Bag of 10

## F1960 PEX EXPANSION FITTINGS - LF BRASS

MrPEX® Lead Free Brass fittings comply with NSF 61, which allows the product to contain no more than 0.25% lead. These fittings meet F1960.

### F1960 LF Brass - Coupling

PART#	TYPE	UNIT	LIST
4815050	1/2" PEX x 1/2" PEX	Bag of 50	\$177.00
4817575	3/4" PEX x 3/4" PEX	Bag of 25	\$151.00
4811010	1" PEX x 1" PEX	Bag of 25	\$302.00



### F1960 LF Brass - Threaded Adapter, Male

PART#	TYPE	UNIT	LIST
4821010	1" PEX x 1" NPT	Bag of 25	\$311.00
4821075	1" PEX x 3/4" NPT	Bag of 25	\$262.00
4825050	1/2" PEX x 1/2" NPT	Bag of 25	\$92.00
4825075	1/2" PEX x 3/4" NPT	Bag of 25	\$132.00
4827510	3/4" PEX x 1" NPT	Bag of 25	\$251.00
4827575	3/4" PEX x 3/4" NPT	Bag of 25	\$138.00



### F1960 LF Brass - Sweat Adapter, Male

PART#	TYPE	UNIT	LIST
4845050	1/2" PEX x 1/2" CU	Bag of 50	\$153.00
4845075	1/2" PEX x 3/4" CU	Bag of 25	\$102.00
4847575	3/4" PEX x 3/4" CU	Bag of 25	\$149.00
4841010	1" PEX x 1" CU	Bag of 25	\$254.00



### F1960 LF Brass - Sweat Adapter, Female

PART#	TYPE	UNIT	LIST
4855050	1/2" PEX x 1/2" CU	Bag of 50	\$129.00
4855075	1/2" PEX x 3/4" CU	Bag of 25	\$116.00
4857575	3/4" PEX x 3/4" CU	Bag of 25	\$127.00
4851010	1" PEX x 1" CU	Bag of 25	\$263.00



### F1960 LF Brass - Elbow

PART#	TYPE	UNIT	LIST
4865050	1/2" PEX x 1/2" PEX	Bag of 50	\$216.00
4867575	3/4" PEX x 3/4" PEX	Bag of 25	\$215.00
4861010	1" PEX x 1" PEX	Bag of 25	\$438.00





**F1960 LF Brass - Tee**

PART#	TYPE	UNIT	LIST
4891011	1" PEX x 1" PEX x 1" PEX	Bag of 10	\$239.00
4891017	1" PEX x 1" PEX x 3/4" PEX	Bag of 25	\$507.00
4891071	1" PEX x 3/4" PEX x 1" PEX	Bag of 25	\$535.00
4891077	1" PEX x 3/4" PEX x 3/4" PEX	Bag of 25	\$446.00
4897571	3/4" PEX x 3/4" PEX x 1" PEX	Bag of 25	\$409.00
4897577	3/4" PEX x 3/4" PEX x 3/4" PEX	Bag of 25	\$288.00





## AXIAL PRESS FITTINGS F2080 FOR PEX TUBING

MrPEX® Axial Press Fittings ASTM F2080 for use with MrPEX® Barrier PEX tubing in radiant applications. The body is made from brass and uses a brass axial press sleeve (sold separately). An accurately installed axial press fitting offers a fast, reliable, and permanent connection.

### F2080 Axial Press Brass Rings

PART#	TYPE	UNIT	LIST
4500500	1/2" PEX	Bag of 10	\$10.00
4500625	5/8" PEX	Bag of 10	\$22.00
4500750	3/4" PEX	Bag of 10	\$16.00
4501000	1" PEX	Bag of 10	\$25.00



### F2080 Axial Press Manifold Transitions

PART#	TYPE	UNIT	LIST
4501063	1" BSP x 5/8" PEX	Bag of 2	\$18.00
4501075	1" BSP x 3/4" PEX	Bag of 2	\$23.00
4501010	1" BSP x 1" PEX	Bag of 2	\$23.00



### F2080 Axial Press Couplings

PART#	TYPE	UNIT	LIST
4515050	1/2" PEX x 1/2" PEX	Bag of 10	\$25.00
4516363	5/8" PEX x 5/8" PEX	Bag of 10	\$47.00
4517575	3/4" PEX x 3/4" PEX	Bag of 10	\$47.00
4511010	1" PEX x 1" PEX	Bag of 10	\$88.00



### F2080 Axial Press Transition to NPT

PART#	TYPE	UNIT	LIST
4525050	1/2" PEX to 1/2" NPT	Bag of 10	\$30.00
4526375	5/8" PEX to 3/4" NPT	Bag of 10	\$55.00
4527510	3/4" PEX to 1" NPT	Bag of 10	\$81.00
4527575	3/4" PEX to 3/4" NPT	Bag of 10	\$51.00
4521010	1" PEX to 1" NPT	Bag of 10	\$88.00



### F2080 Axial Press Transition to FIP

PART#	TYPE	UNIT	LIST
4535050	1/2" PEX to 1/2" FIP	Bag of 10	\$48.00
4536363	5/8" PEX to 3/4" FIP	Bag of 10	\$74.00
4537510	3/4" PEX to 1" FIP	Bag of 10	\$90.00
4537575	3/4" PEX to 3/4" FIP	Bag of 10	\$70.00
4531010	1" PEX to 1" FIP	Bag of 10	\$110.00



### F2080 Axial Press Transition to CU Female Sweat

PART#	TYPE	UNIT
4555050	1/2" PEX to 1/2" CU	Bag of 10
4556375	5/8" PEX to 3/4" CU	Bag of 10
4557510	3/4" PEX to 1" CU	Bag of 10
4557575	3/4" PEX to 3/4" CU	Bag of 10
4551010	1" PEX to 1" CU	Bag of 10

### F2080 Axial Press Elbow

PART#	TYPE	UNIT
4577575	3/4" PEX x 3/4" PEX	Bag of 10
4571010	1" PEX x 1" PEX	Bag of 10



# CONTROLS

## ZONING CONTROLS

MrPEX® Zoning Controls offer low voltage electronic zone control featuring thermostats, zone box, valve actuators, zone valves.

### Digital Room Thermostats

PART#	TYPE	UNIT
5110740	Air Only	Each
5110519	Radiant Thermostat Air/ Floor w/ sensor	Each
5110521	Radiant Thermostat Air/ Floor - Heat/ Heat or Heat/Cool w/ floor sensor	Each
5110079	Spare Part Floor Sensor for #5110519 & 5110521, 10k 15 ft	Each
5110012	Wall Plate for 5110519 & 5110521 - Spare part	Each



### Valve Actuator for Valved Manifolds w/out Adapter

PART#	TYPE	UNIT	LIST
5120700	4-wire w/ End Switch	Each	\$67.00
5120701	2-wire	Each	\$48.00

NOTE: No adapter is needed when used with MrPEX 1 1/4" Stainless Steel Manifolds. When used with MrPEX 1 1/4" & 1 1/2" Brass Manifolds, adapter ring 5700010 (VA-10), when used with MrPEX Composite Manifold, use adapter 5700090 (VA-90 WE) adapters come in kit for this item. All other adapters need to be purchased separately. Please see spare parts section for other adapter types.



### Zone Valve Including Actuator w/ End Switch

PART#	TYPE	UNIT	LIST
5120711	1/2" CU Union x CU Union, Cv 2.1	Each	\$133.00
5120712	3/4" CU Union x CU Union, Cv 3.2	Each	\$144.00



### Zone Valve Including Actuator w/ End Switch

PART#	TYPE	UNIT	LIST
5120721	1/2" Female NPT x Male NPT, Cv 2.1	Each	\$128.00
5120722	3/4" Female NPT x Male NPT, Cv 3.2	Each	\$136.00
5120723	1" Female NPT x Male NPT, Cv 4.0	Each	\$173.00
5120724	1 1/4" Female NPT x Male NPT, Cv 4.7	Each	\$222.00





### Zone Controller

PART#	TYPE	UNIT
5130304	Zone Valve Box - 304V, Up to 4 Zones	Each
5130306	Zone Valve Box - 306V, Up to 6 Zones	Each
5130704	Simple Zone Controller, 24V, Up to 4 Zones	Each
5131304	Switching Relay - 304P, Up to 4 Pumps	Each
5131306	Switching Relay - 306P, Up to 6 Pumps	Each

## SNOWMELT CONTROLS

MrPEX® snowmelt controls offer low voltage snowmelt control for 1 or 2 zone applications, Snow/Ice Detector, and sensors.



PART#	TYPE	UNIT
5140090	Ground Snow Sensor - 090	Each
5140091	Socket - 091	Each
5140095	Aerial Snow Sensor - 095	Each
5140654	Snow Melt Control - 654	Each



## MIXING CONTROLS

MrPEX® Mixing Controls offer brass 3-way and 4-way mixing valves, low voltage floating action or 0-10v motors, and thermostatic 3-way tempering valve.

### 3-Way Thermostatic Mixing Valve (95° – 131°F)

PART#	TYPE	UNIT
5210742	1" CU Union, Cv 4.6	Each



### Copper Sweat Union Spare Part

PART#	TYPE	UNIT
5250002	1" x 3/4" Sweat	Each
5250003	1 1/4" x 1" Sweat	Each
5250004	1 1/2" x 1 1/4" Sweat	Each



### 3-Way Compact Mixing Valve of Brass

PART#	TYPE	UNIT
5250325	3/4" Copper Sweat Union, Cv 4.6	Each
5250332	1" Copper Sweat Union, Cv 9.3	Each
5250340	1 1/4" Copper Sweat Union, Cv 17.4	Each



### 4-Way Compact Mixing Valve of Brass

PART#	TYPE	UNIT
5250425	3/4" Copper Sweat Union, Cv 7.3	Each
5250432	1" Copper Sweat Union, Cv 13.8	Each
5250440	1 1/4" Copper Sweat Union, Cv 17.3	Each



### Valve Motor 24V 90° 70 sec 5 Nm

PART#	TYPE	UNIT
5220051	Floating Action w/ Mounting Kit	Each
5220058	0-10 V w/ Mounting Kit	Each



### SmartComfort 110 – Reset Control Motor Kit w/ Sensors

PART#	TYPE	UNIT
5230110	Valve Motor w/ built-in control	Each



### SmartComfort 100 – Setpoint Control Motor Kit w/ Sensor

PART#	TYPE	UNIT
5230100	Valve Motor w/ built-in control	Each





**Outdoor Temperature Sensor, Spare Part**

PART #	TYPE	UNIT
5230101	For SmartComfort 110	Each

**Supply Temperature Sensor, Spare Part**

PART #	TYPE	UNIT
5230102	For SmartComfort 110 & 100	Each



**Remote Room Control Unit**

PART #	TYPE	UNIT
5230103	For SmartComfort 110	Each

## INTEGRATED DYNAMIC CONTROL

### The Ultimate In Indoor Comfort, Snowmelt & Energy Control!



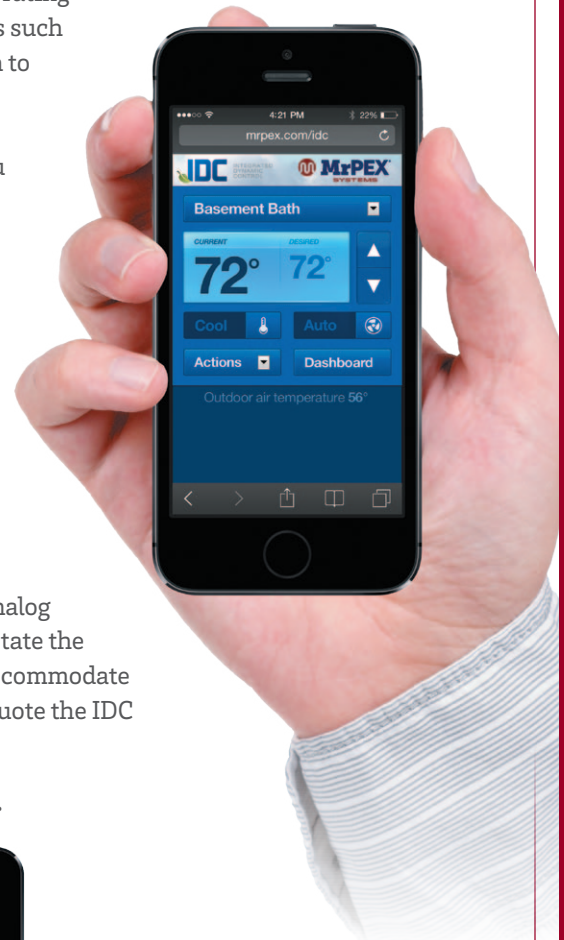
IDC is a PC based intelligent control system which delivers optimized comfort and maximized efficiency by coordinating HVAC, Indoor Air Quality, and Hydronic systems in one control. IDC is the optimal control system for incorporating

radiant floor heating and cooling systems, with renewable energy sources such as solar, heat pumps, or others. IDC also offers a new and unique approach to snowmelt control. The IDC System allows remote access from anywhere in the world for monitoring, managing, and controlling via the web using any web enabled device such as a PC, Smartphone, or tablet. IDC gives you the opportunity to do as much or as little as you demand, from a small house to large commercial building, and brings intelligent climate control technologies, previously exclusive to large-scale commercial buildings, into the residential and mid-range commercial market. Many larger homes utilize some kind of Home Automation system, so IDC has an interface that allows the homeowner to integrate selected information to be shown and accessed in the Home Automation system interface.

The system brains consists of a PC with the IDC software using the home network to communicate with a custom cabinet housing all the I/O blocks and communication units. Wired to the cabinet are all the sensors, equipment and control devices.

The IDC system is based on control points. These can be Analog Inputs, Analog Outputs, Digital Inputs, and Digital Outputs. The number of points will dictate the software package required. The control cabinet will then be matched to accommodate the sensors, equipment and control devices in the system. Therefore we quote the IDC System on a project by project basis.

**Please contact MrPEX® Systems or your local rep for pricing.**



# TOOLS & ACCESSORIES

## HEAT TRANSFER ACCESSORIES

MrPEX® Accessories feature extruded aluminum heat transfer plates and omega style aluminum heat transfer plates for even heat distribution in suspended applications. RetroPanel is used for retrofit applications on top of existing concrete or sub-floor.



### Omega Style Aluminum Heat Transfer Plates

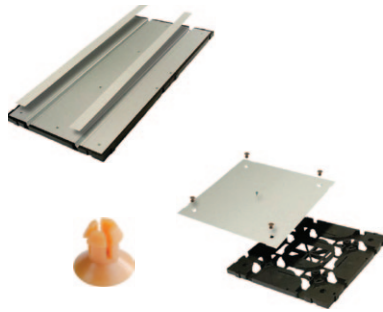
PART#	TYPE	UNIT
6110702	18" x 5" for 1/2" Tubing	Box of 100



### DuoTrack Extruded Aluminum Heat Transfer Plates, Pre-drilled

PART#	TYPE	UNIT
6110733	48" x 3.75" for 3/8" or 1/2" PEX	Box of 20

NOTE: Quick estimate for 8" O.C.,  $((\text{square footage} \times 0.9) \times 1.5) / 4 = \text{Qty of DuoTrack Plates}$ .



### RetroPanel Heat Transfer System, 8" On Center

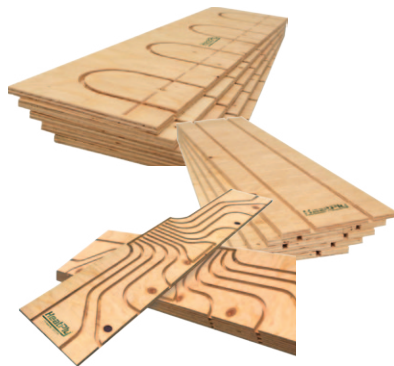
PART#	TYPE	UNIT
6114001	15 3/4" x 31 1/2" Straight for 1/2" PEX	Box of 10
6114002	15 3/4" x 15 3/4" Return for 1/2" PEX	Box of 20
6114007	Replacement Fasteners for #6114002	Bag of 4

NOTE: Estimated list price per square foot of covered area is \$8.06.

Material estimate; Floor area (sqft) x 0.9 = net floor area.

Straight Panel = Net floor area x 0.70 / 3.44 = Qty.

Return Panel = Net floor area x 0.30 / 1.72 = Qty.



### Radiant Wood Track for 3/8" PEX Tubing

PART#	TYPE	UNIT
6115019	Run Panel - 6" O.C. - 12" x 48"	Box of 10
6115029	Turn-Around Panel - 6" O.C. - 12" x 48"	Box of 10
6115039	Manifold Panel - 6" O.C. - 12" x 48"	Box of 10

## MANIFOLD CABINETS

### Manifold Cabinets (Shipped Un-Assembled)

PART#	TYPE	UNIT
6212421	20 4/5" W x 31 1/2" H x 5 1/10" D for Surface Mounting	Each
6212431	26 4/5" W x 31 1/2" H x 5 1/10" D for Surface Mounting	Each
6212451	40 1/2" W x 31 1/2" H x 5 1/10" D for Surface Mounting	Each
6213421	20 4/5" W x 27 1/5-31 1/10" H x 5 1/10" D for Recessed Mounting	Each
6213431	26 4/5" W x 27 1/5-31 1/10" H x 5 1/10" D for Recessed Mounting	Each
6213451	40 1/2" W x 27 1/5-31 1/10" H x 4 1/4" D for Recessed Mounting	Each



### Surface Manifold Cabinet Selection Chart (Shipped Un-Assembled)

PART#	1 1/4" STAINLESS NO BALL VALVE	1 1/4" STAINLESS W/ BALL VALVE	COMPOSITE	1 1/2" STAINLESS	1 1/2" BRASS
6212421	Up to 7 Loops	Up to 6 Loops	Up to 6 Loops	Up to 4 Loops	Up to 5 Loops
6212431	Up to 11 Loops	Up to 10 Loops	Up to 10 Loops	Up to 8 Loops	Up to 8 Loops
6412451	Up to 12 Loops	Up to 12 Loops	Up to 12 Loops	Up to 10 Loops	Up to 12 Loops

### Recessed Manifold Cabinet Selection Chart (Shipped Un-Assembled)

PART#	1 1/4" STAINLESS NO BALL VALVE	1 1/4" STAINLESS W/ BALL VALVE	COMPOSITE	1 1/2" STAINLESS	1 1/2" BRASS
6213421	Up to 7 Loops	Up to 6 Loops	Up to 6 Loops	Up to 4 Loops	Up to 5 Loops
6213431	Up to 11 Loops	Up to 10 Loops	Up to 10 Loops	Up to 8 Loops	Up to 8 Loops
6213451	Up to 12 Loops	Up to 12 Loops	Up to 12 Loops	Up to 10 Loops	Up to 12 Loops

## TUBE FASTENERS & ORGANIZERS

MrPEX® Fasteners and associated accessories and tools allow for easy and fast installations of the tubing in slab or suspended applications.



### Tacker Tool

PART#	TYPE	UNIT
7110223	To Mount #7110224	Each

### Foam Insulation Board Tacker Staples for 3/8" – 3/4" PEX & 3/8" – 5/8" PAP Tubing

PART#	TYPE	UNIT
7110224	2"	Box of 300



### Foam Insulation Board Anchor Clips for 3/8" to 5/8" PEX & PAP Tubing

PART#	TYPE	UNIT
7110229		Bag of 50



### Anchor Clip Mounting Tool

PART#	TYPE	UNIT
7110232	For #7110228 & #7110229	Each



### Plywood Rider Staples

PART#	TYPE	UNIT
7110235	For 3/8" to 5/8" PEX & PAP	Box of 500

### Rider Staples Mounting Gun

PART#	TYPE	UNIT
7110236	For #7110235	Each



### Quip Clip for Fastening PEX to Wire Mesh

PART#	TYPE	UNIT
7120225	For 1/2" PEX	Bag of 250
7120226	For 5/8" & 3/4" PEX	Bag of 250



### Plastic Bend Supports

PART#	TYPE	UNIT
7130211	For 3/8" PEX	Bag of 10
7130212	For 1/2" PEX	Bag of 10
7130213	For 5/8" PEX	Bag of 10
7130214	For 3/4" PEX	Bag of 10
7130215	For 1" PEX	Bag of 10



### Metal Bend Supports for Suspended Applications

PART#	TYPE	UNIT
7140375	For 3/8" PEX	Bag of 50
7140500	For 1/2" PEX	Bag of 50
7140625	For 5/8" PEX	Bag of 50
7140750	For 3/4" PEX	Bag of 25



### Plastic Conduit Bend Supports for Concrete Applications

PART#	TYPE	UNIT
7153862	3/8" – 5/8" Tubing	Bag of 10
7156275	5/8" – 3/4" Tubing	Bag of 10



### Pipe Organizer

PART#	TYPE	UNIT
6210001	For 1 1/4" Stainless Steel Manifolds, Uses Bend Support #7153862	Each



### OctaRail for Mounting PEX

PART#	TYPE	UNIT
7223875	For 3/8", 1/2", 5/8", 3/4" PEX, 3.28 ft (1 Meter) each	Box of 100



NOTE: Each box of 100 will accommodate 600 ft of PEX based on a 12" O.C, 900 ft or 9" O.C, and 1200 for 6" O.C.

### Plastic Zip Ties

PART#	TYPE	UNIT
7120008	8"	Bag of 1000



## INSTALLATION TOOLS

MrPEX® Installation Tools features tube handling tools for PEX or PEX-AL-PEX as well as prep and press fitting tools for PEX-AL-PEX.

### Compact Adjustable Tubing Uncoiler

PART#	TYPE	UNIT
8110720	Heavy Duty	Each



### Pipe Straightener w/ Bracket

PART#	TYPE	UNIT
8110721	For 3/4" & 1" PAP	Each





**Feed Eye w/ Bracket**

PART#	TYPE	UNIT
8110722	For PEX Tubing	Each



**Pipe Cutter**

PART#	TYPE	UNIT
8120878	For All Sizes Up to 1 1/4" PEX & PAP	Each



**Simple Cutter**

PART#	TYPE	UNIT
8120879	For 3/8" - 1" Tubing	Each



**Fill/Transfer Pump**

PART#	TYPE	UNIT
8110001	1/2" HP, 120V, 120FtHd	Each



**Burring Reamer for PEX-AL-PEX**

PART#	TYPE	UNIT
8210872	5/8" - 3/4" - 1"	Each
8210873	3/8" - 1/2" - 3/4"	Each
8210874	1/2" - 5/8" - 3/4"	Each
8220875	1/2" - 3/4" - 1"	Each



**Manual Press Tool for PEX-AL-PEX**

PART#	TYPE	UNIT
8230895	Manual Press Tool Kit for PAP w/ Inserts	1/2", 5/8", 3/4", 1"
8230896	1/2" Insert for #8230895	Each
8230897	5/8" Insert for #8230895	Each
8230898	3/4" Insert for #8230895	Each
8230899	1" Insert for #8230895	Each



### Battery Press Tool for PEX-AL-PEX

PART#	TYPE	UNIT
8243000	Basic Kit, No Jaws for 1/2", 5/8", 3/4" & 1" PAP	Each
8243001	Kit w/ 1/2", 3/4" & 1" Jaws for 1/2", 5/8", 3/4" & 1" PAP	Each
8243002	Spare Battery	Each
8243003	Spare Battery Charger	Each
8243016	1/2" PAP Press Jaw for #8243000	Each
8243020	5/8" PAP Press Jaw for #8243000	Each
8243025	3/4" PAP Press Jaw for #8243000	Each
8243032	1" PAP Press Jaw for #8243000	Each
8243050	1/2" PEX Press Jaw (F1807) for #8243000	Each
8243063	5/8" PEX Crimp Jaw (F1807) for #8243000	Each
8243075	3/4" PEX Press Jaw (F1807) for #8243000	Each
8243010	1" PEX Crimp Jaw (F1807) for #8243000	Each
8243013	1 1/4" PEX Crimp Jaw (F1807) for #8243000	Each




---

### Manual Press Tool for PEX (F1807 & F2159)

PART#	TYPE	UNIT
8400500	1/2" Stainless Steel Sleeves	Each
8400750	3/4" Stainless Steel Sleeves	Each
8401000	1" Stainless Steel Sleeves	Each



### Manual Press Tool for PEX (F1807 & F2159), Compact

PART#	TYPE	UNIT
8401050	1/2" Stainless Steel Sleeves	Each



### Manual Press Tool for PEX (F1807 & F2159), Combination

PART#	TYPE	UNIT
8405075	1/2" & 3/4" Stainless Steel Sleeves	Each





### Manual Axial Press Tool for PEX (F2080)

PART#	TYPE	UNIT
8320001	No Jaws	Each

### Jaws for Axial Press Tool

PART#	TYPE	UNIT
8320002	4-in-1 (3/8", 1/2", 5/8", 3/4")	Each
8320375	3/8"	Each
8320500	1/2"	Each
8320625	5/8"	Each
8320750	3/4"	Each
8321000	1"	Each



### Manual Axial Press Expander Tool (F2080)

PART#	TYPE	UNIT
8330001	No Heads	Each

### Axial Press Expander Head (F2080)

PART#	TYPE	UNIT
8330375	3/8"	Each
8330500	1/2"	Each
8330625	5/8"	Each
8330750	3/4"	Each
8331000	1"	Each



### Manual PEX Expander Tool Kit (F1960)

PART#	TYPE	UNIT
8500001	Manual F1960 PEX Expander Tool Kit - 1/2", 3/4", 1"	Each

### PEX Expander Heads (F1960)

PART#	TYPE	UNIT
8500500	1/2"	Each
8500750	3/4"	Each
8501000	1"	Each

## SPARE PARTS

PART#	TYPE	UNIT
2700852	Compression Ring for #2410500 - 1/2"	bag of 10
2700853	Compression Ring for #2410625 - 5/8"	bag of 10
2700854	Compression Ring for #2410750 - 3/4"	bag of 10
2701802	SS Press Sleeve-Spare Part - 1/2"	Bag of 10
2701803	SS Press Sleeve-Spare Part - 5/8"	Bag of 10
2701804	SS Press Sleeve-Spare Part - 3/4"	Bag of 10
2701805	SS Press Sleeve-Spare Part - 1"	Bag of 10
2708490	O-Ring for Barb Insert 1" PAP Press Fitting	Each
2708520	O-Ring for Barb Insert 1/2" PAP Press fitting	Each
2708530	O-Ring for Barb Insert 5/8" PAP Press fitting	Each
2708540	O-Ring for Barb Insert 3/4" PAP Press fitting	Each
3610002	Basic End Cap for 1 1/4" Brass Manifold	Box of 2
3610011	End Cap w/ Automatic Air Ven & Drain 1" BSP for 1 1/4" SS Manifold	Each
3710171	Manifold Bracket for 1 1/4" Brass Manifold	Each
3710172	Flow Meter Valve for 1 1/4" & 1 1/2" Brass Manifolds	Each
3710173	Plastic Valve Cap for 1 1/4" & 1 1/2" Brass Manifolds	Each
3710174	On/Off Valve for 1 1/4" & 1 1/2" Brass Manifolds	Each
3710176	Flowmeter Adjustment Tool for Brass Manifolds	Each
3710179	Plug to Replace On/Off & Flowmeter valve on Brass Manifolds	Each
3711390	O-RINGS for 1" BSP Manifold Transition	Each
3711391	O-Ring for #3620010 Spare Part	Each
3721171	Manifold Bracket for 1 1/4" 323 Series Stainless Steel Manifold	Each
3721172	Flowmeter Valve for 1 1/4" 323 Series Stainless Steel Manifold w/ Blue Plastic Cap	Each
3721173	Plastic Valve Cap for 323 Series Stainless Steel Manifold	Each
3721174	On/Off Valve for 323 Series Stainless Steel Manifold	Each

## Spare Parts (cont.)

PART#	TYPE	UNIT
3721175	Blue Plastic Flowmeter Cap for 323 Series Stainless Steel Manifold	Each
3721176	Manifold Loop Nipple, Supply & Return to EK 20	Each
3721177	Black Plastic Adapter for 323 Series On/Off Valve	Each
3721178	Replacement O-Ring for #3721176	Each
3730120	End Cap w/ Air Vent Fill/Drain Valve for 1 1/2" Brass Manifold	Set of 2
3730171	Manifold Bracket for 1 1/2" Brass Manifold	Each
3750001	Replacement EPDM Flat Gasket for 1 1/2" Stainless Steel Manifold Branch	Each
3750002	Replacement EPDM Flat Gasket for 1 1/2" Stainless Steel Manifold End	Each
3750010	Fiber Flat Gasket for 1 1/2" Stainless Manifold Branch Replacement Part - 1"	Each
3750020	Fiber Flat Gasket for 1 1/2" Stainless Manifold End replacement part - 1 1/4"	Each
3750171	Manifold Bracket for 1 1/2" Stainless Steel Manifold	Set of 2
3750179	Air Vent for 1 1/2" Stainless Steel Manifold	Each
3810008	Automatic Air Vent, Replacement Part, 1 Loop	Set of 2
3810009	Composite Manifold Base Kit, Drain/Vent Module & Basic Cap	Set of 2
3810010	Drain Valve for #3810009	Set of 2
3810014	Composit Manifold Isolation Ball-Valves	Set of 2
3810015	Hose Connector for Drain Valve	Each
3810016	Composite Manifold Thermometer	Set of 2
3810170	Composit Manifold Supply Valve	Each
3810171	Composite Manifold Bracket	Set of 2
3810172	Composite Manifold Supply Flowmeter Valve	Each
3810174	Composite Manifold Return Valve	Each
3811173	Plastic Valve Cap for Composite Manifold	
4700152	Compression Ring for #4310500	Bag of 10
4700153	Compression Ring for #4310625	Bag of 10
4700154	Compression Ring for #4320750	Bag of 10
4701770	O-Ring for EK 20 Insert	Each



**LIMITED WARRANTY—EFFECTIVE MAY 1, 2018**  
**VALID FOR MrPEX® SYSTEMS TUBING & PANEL HEATING COMPONENTS**

## LIMITED WARRANTY

MrPEX® Systems warrants to its "clients" that the MrPEX® Systems Tubing and Panel Heating Components, used for Panel Heating applications, sold hereunder shall be free from defects in material and workmanship and that the components will conform to specifications stated in MrPEX® Systems Publications. This Limited Warranty shall expire thirty (30) years for the MrPEX® Systems tubing, five (5) years for DZR Press Fittings and two (2) years for all other components, from date of shipment by MrPEX® Systems unless otherwise specified in writing. MrPEX® Systems further warrants that products listed are compatible with each other, but at the same time we disclaim warranty for claims related to compatibility with non-MrPEX® Systems products. Components sold under this Limited Warranty must (1) be selected, designed, and installed according to the instructions in MrPEX® Systems Publications using appropriate trade workmanship and according to the local building code(s), (2) remain in their originally installed location, (3) are connected to appropriate water and power supplies, (4) show no evidence of tampering, mishandling, neglect, accidental damage, modification or repair without the approval of MrPEX® Systems or damage done to the product by anyone other than MrPEX® Systems authorized personnel. MrPEX® Systems' sole obligation hereunder shall be, at its option, to issue credit, repair or replace any component or part thereof which is proved to be other than as warranted. No allowance shall be made to clients for transportation or labor charges unless such charges are authorized in writing in advance by MrPEX® Systems. Any repairs without the express written consent of MrPEX® Systems, shall render this Limited Warranty invalid. Warranty claims must be received by MrPEX® Systems within the applicable warranty period and within thirty (30) days from the time when the cause for the claim occurred or was discovered. Upon receipt of prompt notice of a warranty claim, MrPEX® Systems shall have ten (10) business days in which to determine whether it acknowledges responsibility for any asserted defects in material or workmanship and the appropriate action to be taken. This Limited Warranty and any claims arising from breach of warranty, or any other claim arising hereunder, shall be governed and construed under the laws of the State of Minnesota. No other persons than MrPEX® Systems employees have any express or implied authority to bind MrPEX® Systems to any agreement or warranty of any kind without the express written consent of MrPEX® Systems.

### **Disclaimer of Warranties:**

MrPEX® Systems disclaims any warranty not provided herein including the implied warranty of merchantability and implied warranty of fitness for a particular purpose. It is expressly understood that MrPEX® Systems is not responsible for any consequential or other damages that may arise from using MrPEX® Systems components. Damage resulting from water freezing in the tubing does not constitute a defect in material or workmanship, and shall not be covered by this warranty. MrPEX® Systems tubing may not be stored in direct sunlight for any period longer than three weeks or this limited warranty becomes invalid. MrPEX® Systems disclaims any statutory or implied warranty of habitability. MrPEX® Systems further disclaims any responsibility for losses, expenses, inconveniences, special, indirect, secondary, incidental or consequential damages arising from ownership or use of the articles sold hereunder. There are no warranties which extend beyond the face hereof.

## PRE-INSULATED PEX-a TUBING

Full coils are 328 feet . Shorter coil lengths are available with a \$50.00 net cut fee. All freight on Pre-Insulated PEX Products will be added to invoice. No FFA allowance provided by MrPEX®.



### Pre-Insulated PEX-a Barrier Tubing

PART#	TYPE	UNIT
1510032	32mm (1") PEX Single - 90mm Outer Jacket	Per Ft
1510040	40mm (1 1/4") PEX Single - 140mm Outer Jacket	Per Ft
1510050	50mm (1 1/2") PEX Single - 140mm Outer Jacket	Per Ft
1510063	63mm (2") PEX Single - 160mm Outer Jacket	Per Ft
1510075	75mm (2 1/2") PEX Single - 160mm Outer Jacket	Per Ft
1510090	90mm (3") PEX Single - 200mm Outer Jacket	Per Ft
1510110	110mm (3 1/2") PEX Single - 200mm Outer Jacket	Per Ft
1520028	28mm (3/4") PEX Double - 140mm Outer Jacket	Per Ft
1520032	32mm (1") PEX Double - 140mm Outer Jacket	Per Ft
1520040	40mm (1 1/4") PEX Double - 160mm Outer Jacket	Per Ft
1520050	50mm (1 1/2") PEX Double - 160mm Outer Jacket	Per Ft
1520063	63mm (2") PEX Double - 200mm Outer Jacket	Per Ft

### Brass Transition Fittings (Heating Only)



PART#	TYPE	UNIT
1502810	28mm PEX x 1" NPT	Each
1503210	32mm PEX x 1" NPT	Each
1504012	40mm PEX x 1 1/4" NPT	Each
1505015	50mm PEX x 1 1/2" NPT	Each
1506320	63mm PEX x 2" NPT	Each
1507525	75mm PEX x 2 1/2" NPT	Each
1509030	90mm PEX x 3" NPT	Each
1501104	110mm PEX x 4" NPT	Each

## ACCESSORIES

### Single Dust Cap

PART#	TYPE	UNIT
1500001	32mm (1") Single - 90mm OD	Each
1500002	40mm (1 1/4") Single - 140mm OD	Each
1500003	50mm (1 1/2") Single - 140mm OD	Each
1500004	63mm (2") Single - 160mm OD	Each
1500005	75mm (2 1/2") Single - 160mm OD	Each
1500006	90mm (3") Single - 200mm OD	Each
1500007	110mm (3 1/2") Single - 200mm OD	Each



### Double Dust Cap

PART#	TYPE	UNIT
1500008	32mm (1") Double - 140mm OD	Each
1500009	40mm (1 1/4") Double - 160mm OD	Each
1500010	50mm (1 1/2") Double - 160mm OD	Each
1500011	63mm (2") Double - 200mm OD	Each



### Single Shrink Cap

PART#	TYPE	UNIT
1500012	40-50mm (1 1/4" - 1 1/2") Single - 140mm OD	Each
1500013	63-75mm (2" - 2 1/2") Single - 160mm OD	Each
1500014	90-110mm (3" - 4") Single - 200mm OD	Each



### Double Shrink Cap

PART#	TYPE	UNIT
1500015	32mm (1") Double - 140mm OD	Each
1500016	40mm (1 1/4") Double - 160mm OD	Each
1500017	50mm (1 1/2") Double - 160mm OD	Each
1500018	63mm (2") Double - 200mm OD	Each



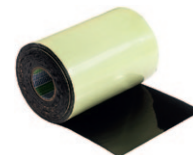
### Shrink Sleeve

PART#	TYPE	UNIT
1500019	90mm Jacket 225mm long	Each
1500020	140mm Jacket 225mm Long	Each
1500021	200mm Jacket 225mm Long	Each



### Repair Tape

PART#	TYPE	UNIT
1500022	200mm Wide x 10m Long	Each
1500023	150mm Wide x 10m Long	Each





**Wall Feed Through Assembly**

PART#	TYPE	UNIT
1500024	Fits 75mm & 90mm Jacket 400mm Long	Each
1500025	Fits 110mm Jacket 400mm Long	Each
1500026	Fits 140mm & 160mm Jacket 400mm Long	Each
1500027	Fits 200mm Jacket 400mm Long	Each

**Straight Insulation Sleeve**

PART#	TYPE	UNIT
1500028	200mm Jacket 225mm x 1000mm Long	Each
1500029	160mm Jacket 180mm x 1000mm Long	Each
1500030	140mm Jacket 160mm x 850mm Long	Each
1500031	110mm Jacket 125mm x 700mm Long	Each
1500032	90mm/75mm Jacket 110mm x 700mm Long	Each

**T-Insulation Kit**

PART#	TYPE	UNIT
1500033	T-Insulation Kit - Fits 225/200/160/140 Jacket Pipes	Each
1500034	T-Insulation Kit - Fits 140/110/90 Jacket Pipes	Each
1500035	L-Insulation Kit - Fits 225/200/160/140 Jacket Pipes	Each

**Underground Inspection Chamber**

PART#	TYPE	UNIT
1500036	Fits 225/200/160/140 Jacket Pipes	Each

**Seal Chain Assembly**

PART#	TYPE	UNIT
1500037	Fits 90mm Jacket 150mm Wall Opening	Each
1500038	Fits 110mm Jacket 150mm Wall Opening	Each
1500039	Fits 140mm Jacket 200mm Wall Opening	Each
1500040	Fits 160mm Jacket 250mm Wall Opening	Each
1500041	Fits 200mm Jacket 250mm Wall Opening	Each

## LIMITED WARRANTY—EFFECTIVE MAY 1, 2018 VALID FOR MrPEX® PRE-INSULATED TUBING & PRE-INSULATED COMPONENTS

### LIMITED WARRANTY

MrPEX® Systems warrants to its "clients" that the MrPEX® Systems Pre-Insulated Tubing and Pre-Insulated Components, used for underground applications, sold hereunder shall be free from defects in material and workmanship and that the components will conform to specifications stated in MrPEX® Systems Publications. This Limited Warranty shall expire ten (10) years for all Pre-Insulated PEX and Components sold by MrPEX®, from date of shipment by MrPEX® Systems unless otherwise specified in writing. MrPEX® Systems further warrants that products listed are compatible with each other, but at the same time we disclaim warranty for claims related to compatibility with non-MrPEX® Systems products. Components sold under this Limited Warranty must (1) remain in their originally installed location, (2) are connected to appropriate water and power supplies, (3) show no evidence of tampering, mishandling, neglect, accidental damage, modification or repair without the approval of MrPEX® Systems or damage done to the product by anyone other than MrPEX® Systems authorized personnel. MrPEX® Systems' sole obligation hereunder shall be, at its option, to issue credit, repair or replace any component or part thereof which is proved to be other than as warranted. No allowance shall be made to clients for transportation or labor charges unless such charges are authorized in writing in advance by MrPEX® Systems. Any repairs without the express written consent of MrPEX® Systems, shall render this Limited Warranty invalid. Warranty claims must be received by MrPEX® Systems within the applicable warranty period and within thirty (30) days from the time when the cause for the claim occurred or was discovered. Upon receipt of prompt notice of a warranty claim, MrPEX® Systems shall have ten (10) business days in which to determine whether it acknowledges responsibility for any asserted defects in material or workmanship and the appropriate action to be taken. This Limited Warranty and any claims arising from breach of warranty, or any other claim arising hereunder, shall be governed and construed under the laws of the State of Minnesota. No other persons than MrPEX® Systems employees have any express or implied authority to bind MrPEX® Systems to any agreement or warranty of any kind without the express written consent of MrPEX® Systems.

#### Disclaimer of Warranties:

MrPEX® Systems disclaims any warranty not provided herein including the implied warranty of merchantability and implied warranty of fitness for a particular purpose. It is expressly understood that MrPEX® Systems is not responsible for any consequential or other damages that may arise from using MrPEX® System components. Damage resulting from water freezing in the tubing does not constitute a defect in material or workmanship, and shall not be covered by this warranty. MrPEX® Systems disclaims any statutory or implied warranty of habitability. MrPEX® Systems further disclaims any responsibility for losses, expenses, inconveniences, special, indirect, secondary, incidental or consequential damages arising from ownership or use of the articles sold hereunder. There are no warranties which extend beyond the face hereof.

## TUBING

### MrPEX® POTABLE PEX-a TUBING

MrPEX® POTABLE PEX-a Tubing is Cross-Linked Polyethylene (PEX-a) manufactured in accordance with ASTM F 876. Tubing is listed to ASTM F 876/F877/F2023, ASTM E84 (CSA B137.5), cNSFus-pw, NSF/ANSI-61, NSF/ANSI-14, Annex G, NSF U.P.Code PEX 5106, ICC-PMG, ANSI/AWWA 904. MrPEX® POTABLE PEX-a tubing is rated by the Hydrostatic Stress Board of PPI (Plastics Pipe Institute) at: 160 psi at 73.4°F; 100 psi at 180°F. MrPEX® POTABLE PEX-a tubing may be used with fittings that are compliant with ASTM F1807/F1960/F2080/F2098/F2159 standards.

MrPEX® POTABLE PEX-a tubing is offered in coils and straight lengths of RED, WHITE and BLUE colors to help identify hot and cold water supply.



#### WHITE - MrPEX POTABLE PEX-a TUBING

PART#	TYPE	UNIT
1622060	1/2"	Box of 6 - 100 ft Coils
1620030	1/2"	300 ft Coil
1620050	1/2"	500 ft Coil
1621040	1/2"	Bag of 20 - 400 ft (20 ft Sticks)
1641020	3/4"	200 ft (20ft Sticks)
1642030	3/4"	Box of 3 - 100 ft Coil
1640030	3/4"	300 ft Coil
1641020	3/4"	Bag of 10 - 200 ft (20 ft Sticks)
1650010	1"	100 ft Coil
1650030	1"	300 ft Coil
1651010	1"	Bag of 5 - 100 ft (20 ft Sticks)

#### NATURAL - MrPEX PEX-a POTABLE TUBING

PART#	TYPE	UNIT
1660010	1 1/4"	100 ft Coil
1661010	1 1/4"	Bag of 5 - 100 ft (20 ft Sticks)
1670010	1 1/2"	100 ft Coil
1671010	1 1/2"	Bag of 5 - 100 ft (20 ft Sticks)
1680010	2"	100 ft Coil
1681010	2"	Bag of 5 - 100 ft (20 ft Sticks)

**RED - MrPEX POTABLE PEX-a TUBING**

PART#	TYPE	UNIT
1722060	1/2"	Box of 6 - 100 ft Coils
1720030	1/2"	300 ft Coil
1720050	1/2"	500 ft Coil
1721040	1/2"	Bag of 20 - 400 ft (20 ft Sticks)
1740030	3/4"	300 ft Coil
1742030	3/4"	Box of 3 - 100 ft Coil
1741020	3/4"	Bag of 10 - 200 ft (20 ft Sticks)
1750010	1"	100 ft Coil
1750030	1"	300 ft Coil
1751010	1"	Bag of 5 - 100 ft (20 ft Sticks)



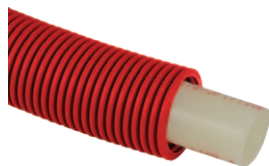
**BLUE - MrPEX POTABLE PEX-a TUBING**

PART#	TYPE	UNIT
1822060	1/2"	Box of 6 - 100 ft Coils
1820030	1/2"	300 ft Coil
1820050	1/2"	500 ft Coil
1821040	1/2"	Bag of 20 - 400 ft (20 ft Sticks)
1842030	3/4"	Box of 3 - 100 ft Coil
1840030	3/4"	300 ft Coil
1841020	3/4"	Bag of 10 - 200 ft (20 ft Sticks)
1850010	1"	100 ft Coil
1850030	1"	300 ft Coil
1851010	1"	Bag of 5 - 100 ft (20 ft Sticks)



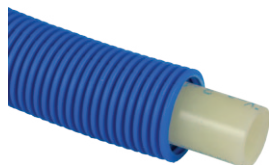


## MrPEX POTABLE PIPE-IN-PIPE PEX-a TUBING



### RED - Pipe-In-Pipe MrPEX PEX-a POTABLE TUBING w/ Corrugated Outer Jacket

PART#	TYPE	UNIT
1970530	1/2"	300 ft Coil
1970730	3/4"	300 ft Coil
1970110	1"	100 ft Coil



### BLUE - Pipe-In-Pipe MrPEX PEX-a POTABLE TUBING w/ Corrugated Outer Jacket

PART#	TYPE	UNIT
1980530	1/2"	300 ft Coil
1980730	3/4"	300 ft Coil
1980110	1"	100 ft Coil



# MULTI PORT TEES

## COMPOSITE MULTI PORT TEE'S, F2159 FITTINGS

MrPEX® Composite Multiport Tees are made from a blend of engineered high performance Polyphenylsulfone (PPSU) resin to achieve a long-term durable product. These PPSU fittings are durable, light weight, corrosion free, and resistant to chlorine and other substances that may be present in today's potable water supply. The Sulfone resin has been used and refined over the past 20 years and has proven a very reliable replacement for brass and copper fittings. MrPEX® multiport tees meet ASTM F2159. MrPEX Stainless Steel Press Sleeves and PEX Press tools are required and purchased separately.

### Single Side - 3/4" PEX Inlet x Closed End x 1/2" PEX

PART#	TYPE	UNIT
3011030	3 Branches	Bag of 5
3011040	4 Branches	Bag of 5
3011060	6 Branches	Bag of 5
3011080	8 Branches	Bag of 5



### Single Side - 1" PEX Inlet x Closed End x 1/2" PEX

PART#	TYPE	UNIT
3012060	6 Branches	Bag of 5
3012080	8 Branches	Bag of 5



### Double Side - 1" PEX Inlet x Closed End x 1/2" PEX

PART#	TYPE	UNIT
3012330	3+3 Branches	Bag of 5
3012440	4+4 Branches	Bag of 5



### Single Side - 3/4" PEX Inlet x 3/4" PEX End x 1/2" PEX

PART#	TYPE	UNIT
3011031	3 Branches	Bag of 5
3011041	4 Branches	Bag of 5



### Single Side - 1" PEX Inlet x 3/4" PEX End x 1/2" PEX

PART#	TYPE	UNIT
3012031	3 Branches	Bag of 5
3012041	4 Branches	Bag of 5
3012061	6 Branches	Bag of 5
3012081	8 Branches	Bag of 5





**Double Side - 3/4" PEX Inlet x 3/4" PEX End x 1/2" PEX**

PART#	TYPE	UNIT
3011331	3+3 Branches	Bag of 5
3011441	4+4 Branches	Bag of 5



**Double Side - 1" PEX Inlet x 3/4" PEX End x 1/2" PEX**

PART#	TYPE	UNIT
3012331	3+3 Branches	Bag of 5
3012441	4+4 Branches	Bag of 5

**COMPOSITE MULTIPOINT TEE'S, F1960 FITTINGS**



**Single Side - 3/4" PEX Inlet x 3/4" PEX End x 1/2" PEX**

PART#	TYPE	UNIT
3051021	2 Branches	Bag of 5
3051031	3 Branches	Bag of 5
3051041	4 Branches	Bag of 5



**Single Side - 3/4" PEX Inlet x Closed End x 1/2" PEX**

PART#	TYPE	UNIT
3051030	3 Branches	Bag of 5
3051040	4 Branches	Bag of 5
3051060	6 Branches	Bag of 5

## COPPER MULTI-PORT TEE'S, F1807 FITTINGS w/ 1" COPPER BODY

MrPEX® Copper Manifolds are made from type L copper. The No Lead product materials comply with NSF 61, which allows the product to contain no more than 0.25% lead. These manifolds meet F1807. MrPEX Stainless Steel Press Sleeves and PEX Press tools are required and purchased separately.

### Single Side - 3/4" PEX Inlet x Closed End x 1/2" PEX

PART#	TYPE	UNIT
3021030	3 Branches	Bag of 5
3021040	4 Branches	Bag of 5
3021060	6 Branches	Bag of 5
3021080	8 Branches	Bag of 5



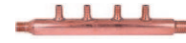
### Single Side - 1" PEX Inlet x Closed End x 1/2" PEX

PART#	TYPE	UNIT
3022060	6 Branches	Bag of 5
3022080	8 Branches	Bag of 5



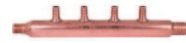
### Single Side - 3/4" PEX Inlet x 3/4" PEX End x 1/2" PEX

PART#	TYPE	UNIT
3021031	3 Branches	Bag of 5
3021041	4 Branches	Bag of 5



### Single Side - 1" PEX Inlet x 3/4" PEX End x 1/2" PEX

PART#	TYPE	UNIT
3022041	4 Branches	Bag of 5
3022061	6 Branches	Bag of 5
3022081	8 Branches	Bag of 5

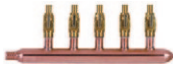


# COPPER MANIFOLDS w/ BALL VALVES

## COPPER MANIFOLD w/ VALVES, LF BRASS F1807 FITTINGS w/ 1" COPPER BODY

MrPEX® Copper Manifolds are made from type L copper and Lead Free Brass. The No Lead product materials comply with NSF 61, which allows the product to contain no more than 0.25% lead. These manifolds meet F1807. MrPEX Stainless Steel Press Sleeves and PEX Press tools are required and purchased separately.

### Single Side - 3/4" PEX Inlet x Closed End x 1/2" PEX



PART#	TYPE	UNIT
3031040	4 Branches	Each
3031050	5 Branches	Each
3031060	6 Branches	Each

### Single Side - 1" Sweat Right Inlet x Closed End x 1/2" PEX Valves



PART#	TYPE	UNIT
3042080	8 Branches	Each
3042100	10 Branches	Each
3042120	12 Branches	Each

### Single Side - 1" Sweat Left Inlet x Closed End x 1/2" PEX Valves



PART#	TYPE	UNIT
3043080	8 Branches	Each
3043100	10 Branches	Each
3043120	12 Branches	Each

## PPSU FITTINGS

### F2159 PEX PRESS FITTINGS - PPSU

MrPEX® plastic fittings are made from a blend of engineered high performance PolyPhenylSulfone (PPSU) resin to achieve a long-term durable product. These PPSU fittings are durable, light weight, corrosion free, and resistant to chlorine and other substances that may be present in today's potable water supply. The Sulfone resin has been used and refined over the past 20 years and has proven a very reliable replacement for brass and copper fittings. MrPEX® fittings are listed to ASTM F2159. MrPEX® Stainless Steel Press Sleeves and PEX Press tools are required and purchased separately.

#### PEX Press Sleeves – Stainless Steel for F1807 & F2159

PART#	TYPE	UNIT
4000500	1/2"	Bag of 100
4000750	3/4"	Bag of 50
4001000	1"	Bag of 50



#### F2159 PPSU – Couplings

PART#	TYPE	UNIT
4015050	1/2" PEX x 1/2" PEX	Bag of 25
4017550	3/4" PEX x 1/2" PEX	Bag of 25
4017575	3/4" PEX x 3/4" PEX	Bag of 25
4011010	1" PEX x 1" PEX	Bag of 10
4011075	1" PEX x 3/4" PEX	Bag of 10



#### F2159 PPSU – Threaded Adapter, Male

PART#	TYPE	UNIT
4025050	1/2" PEX x 1/2" NPT	Bag of 25
4025075	1/2" PEX x 3/4" NPT	Bag of 25
4027550	3/4" PEX x 1/2" NPT	Bag of 25
4027575	3/4" PEX x 3/4" NPT	Bag of 25
4021010	1" PEX x 1" NPT	Bag of 10



#### F2159 PPSU – Threaded Adapter, Female

PART#	TYPE	UNIT
4035050	1/2" PEX x 1/2" NPT	Bag of 25
4037575	3/4" PEX x 3/4" NPT	Bag of 25
4031010	1" PEX x 1" NPT	Bag of 10



#### F2159 PPSU – Plug

PART#	TYPE	UNIT
4040500	1/2" PEX	Bag of 25
4040750	3/4" PEX	Bag of 25
4041000	1" PEX	Bag of 10





**F2159 PPSU – Elbow**

PART#	TYPE	UNIT
4065050	1/2" PEX x 1/2" PEX	Bag of 25
4067550	3/4" PEX x 1/2" PEX	Bag of 25
4067575	3/4" PEX x 3/4" PEX	Bag of 25
4061010	1" PEX x 1" PEX	Bag of 10



**F2159 PPSU – Swivel Adapter**

PART#	TYPE	UNIT
4075151	1/2" PEX x 1/2" NPT, Straight	Bag of 25
4075252	1/2" PEX x 1/2" NPT, Elbow	Bag of 25



**F2159 PPSU – Threaded Elbow**

PART#	TYPE	UNIT
4075050	1/2" PEX x 1/2" NPT, Male	Bag of 25
4077550	3/4" PEX x 1/2" NPT, Male	Bag of 25
4077575	3/4" PEX x 3/4" NPT, Male	Bag of 25



1st, 2nd, & 3rd Measurements

**F2159 PPSU – Tee**

PART#	TYPE	UNIT
4095055	1/2" PEX x 1/2" PEX x 1/2" PEX	Bag of 25
4095057	1/2" PEX x 1/2" PEX x 3/4" PEX	Bag of 25
4097555	3/4" PEX x 1/2" PEX x 1/2" PEX	Bag of 25
4097557	3/4" PEX x 1/2" PEX x 3/4" PEX	Bag of 25
4097571	3/4" PEX x 3/4" PEX x 1" PEX	Bag of 10
4097575	3/4" PEX x 3/4" PEX x 1/2" PEX	Bag of 25
4097577	3/4" PEX x 3/4" PEX x 3/4" PEX	Bag of 25
4091011	1" PEX x 1" PEX x 1" PEX	Bag of 10
4091015	1" PEX x 1" PEX x 1/2" PEX	Bag of 10
4091017	1" PEX x 1" PEX x 3/4" PEX	Bag of 10
4091071	1" PEX x 3/4" PEX x 1" PEX	Bag of 10
4091077	1" PEX x 3/4" PEX x 3/4" PEX	Bag of 10



## F1960 PEX EXPANSION FITTINGS - PPSU

MrPEX® plastic fittings are made from a blend of engineered high performance PolyPhenylSulfone (PPSU) resin to achieve a long-term durable product. These PPSU fittings are durable, light weight, corrosion free, and resistant to chlorine and other substances that may be present in today's potable water supply. The Sulfone resin has been used and refined over the past 20 years and has proven a very reliable replacement for brass and copper fittings.

### F1960 PEX Ring

PART#	TYPE	UNIT
4600500	1/2" PEX	Bag of 50
4600750	3/4" PEX	Bag of 25
4601000	1" PEX	Bag of 10



### F1960 PPSU - Coupling

PART#	TYPE	UNIT
4615050	1/2" PEX x 1/2" PEX	Bag of 25
4617550	3/4" PEX x 1/2" PEX	Bag of 25
4617575	3/4" PEX x 3/4" PEX	Bag of 25
4611010	1" PEX x 1" PEX	Bag of 10
4611075	1" PEX x 3/4" PEX	Bag of 25



### F1960 PPSU - Threaded Adapter Male

PART#	TYPE	UNIT
4625050	1/2" PEX x 1/2" NPT	Bag of 25



### F1960 PPSU - Plug

PART#	TYPE	UNIT
4640500	1/2" PEX	Bag of 50
4640750	3/4" PEX	Bag of 25
4641000	1" PEX	Bag of 25



### F1960 PPSU - Elbow

PART#	TYPE	UNIT
4665050	1/2" PEX x 1/2" PEX	Bag of 25
4667550	3/4" PEX x 1/2" PEX	Bag of 10
4667575	3/4" PEX x 3/4" PEX	Bag of 10
4661010	1" PEX x 1" PEX	Bag of 10





**F1960 PPSU - Tee**

PART#	TYPE	UNIT
4695055	1/2" PEX x 1/2" PEX x 1/2" PEX	Bag of 25
4695057	1/2" PEX x 1/2" PEX x 3/4" PEX	Bag of 25
4697555	3/4" PEX x 1/2" PEX x 1/2" PEX	Bag of 10
4697557	3/4" PEX x 1/2" PEX x 3/4" PEX	Bag of 10
4697575	3/4" PEX x 3/4" PEX x 1/2" PEX	Bag of 10
4697577	3/4" PEX x 3/4" PEX x 3/4" PEX	Bag of 10
4691011	1" PEX x 1" PEX x 1" PEX	Bag of 10
4691015	1" PEX x 1" PEX x 1/2" PEX	Bag of 10
4691017	1" PEX x 1" PEX x 3/4" PEX	Bag of 10
4691071	1" PEX x 3/4" PEX x 1" PEX	Bag of 10
4691077	1" PEX x 3/4" PEX x 3/4" PEX	Bag of 10

## LF BRASS FITTINGS

### F1807 PEX PRESS FITTINGS - LF BRASS

MrPEX® Lead Free Brass fittings comply with NSF 61, which allows the product to contain no more than 0.25% lead. These fittings meet F1807. MrPEX Stainless Steel Press Sleeves and PEX Press tools are required and purchased separately.

#### PEX Press Sleeves – Stainless Steel for F1807 & F2159

PART#	TYPE	UNIT
4000500	1/2"	Bag of 100
4000750	3/4"	Bag of 50
4001000	1"	Bag of 50



#### F1807 LF Brass – Plug

PART#	TYPE	UNIT
4100500	1/2" PEX	Bag of 25
4100750	3/4" PEX	Bag of 25
4101000	1" PEX	Bag of 10



#### F1807 LF Brass – Coupling

PART#	TYPE	UNIT
4115050	1/2" PEX x 1/2" PEX	Bag of 25
4116363	5/8" PEX x 5/8" PEX	Bag of 25
4117550	3/4" PEX x 1/2" PEX	Bag of 25
4117575	3/4" PEX x 3/4" PEX	Bag of 25
4111010	1" PEX x 1" PEX	Bag of 10
4111075	1" PEX x 3/4" PEX	Bag of 10



#### F1807 LF Brass – Threaded Adapter, Male

PART#	TYPE	UNIT
4125050	1/2" PEX x 1/2" NPT	Bag of 25
4125075	1/2" PEX x 3/4" NPT	Bag of 25
4126375	5/8" PEX x 3/4" NPT	Bag of 25
4127510	3/4" PEX x 1" NPT	Bag of 10
4127575	3/4" PEX x 3/4" NPT	Bag of 25
4121010	1" PEX x 1" NPT	Bag of 10
4121075	1" PEX x 3/4" NPT	Bag of 10




**F1807 LF Brass – Threaded Adapter, Female**

PART#	TYPE	UNIT
4135050	1/2" PEX x 1/2" NPT	Bag of 25
4135075	1/2" PEX x 3/4" NPT	Bag of 25
4137510	3/4" PEX x 1" NPT	Bag of 10
4137575	3/4" PEX x 3/4" NPT	Bag of 25
4131010	1" PEX x 1" NPT	Bag of 10


**F1807 LF Brass – Sweat Adapter, Male**

PART#	TYPE	UNIT
4145050	1/2" PEX x 1/2" CU	Bag of 25
4145075	1/2" PEX x 3/4" CU	Bag of 25
4146375	5/8" PEX x 3/4" CU	Bag of 25
4147510	3/4" PEX x 1" CU	Bag of 10
4147575	3/4" PEX x 3/4" CU	Bag of 25
4141010	1" PEX x 1" CU	Bag of 10


**F1807 LF Brass – Sweat Adapter, Female**

PART#	TYPE	UNIT
4155050	1/2" PEX x 1/2" CU	Bag of 25
4155075	1/2" PEX x 3/4" CU	Bag of 25
4157510	3/4" PEX x 1" CU	Bag of 10
4157575	3/4" PEX x 3/4" CU	Bag of 25
4151010	1" PEX x 1" CU	Bag of 10


**F1807 LF Brass – Elbow**

PART#	TYPE	UNIT
4165050	1/2" PEX x 1/2" PEX	Bag of 25
4167575	3/4" PEX x 3/4" PEX	Bag of 25
4161010	1" PEX x 1" PEX	Bag of 10


**F1807 LF Brass - Threaded Elbow, Male**

PART#	TYPE	UNIT
4170055	1/2" PEX x 1/2" NPT	Bag of 25
4170057	1/2" PEX x 3/4" NPT	Bag of 25
4170071	3/4" PEX x 1" NPT	Bag of 10
4170077	3/4" PEX x 3/4" NPT	Bag of 25


**F1807 LF Brass – Sweat Elbow, Male**

PART#	TYPE	UNIT
4180055	1/2" PEX x 1/2" CU	Bag of 25
4180057	1/2" PEX x 3/4" CU	Bag of 25
4180077	3/4" PEX x 3/4" CU	Bag of 25

### F1807 LF Brass – Sweat Elbow, Female

PART#	TYPE	UNIT
4180155	1/2" PEX x 1/2" CU	Bag of 25
4180157	1/2" PEX x 3/4" CU	Bag of 25
4180177	3/4" PEX x 3/4" CU	Bag of 25
4180111	1" PEX x 1" CU	Bag of 10



### F1807 LF Brass – Tee

PART#	TYPE	UNIT
4195055	1/2" PEX x 1/2" PEX x 1/2" PEX	Bag of 25
4195057	1/2" PEX x 1/2" PEX x 3/4" PEX	Bag of 25
4197555	3/4" PEX x 1/2" PEX x 1/2" PEX	Bag of 25
4197557	3/4" PEX x 1/2" PEX x 3/4" PEX	Bag of 25
4197575	3/4" PEX x 3/4" PEX x 1/2" PEX	Bag of 25
4197577	3/4" PEX x 3/4" PEX x 3/4" PEX	Bag of 25
4191011	1" PEX x 1" PEX x 1" PEX	Bag of 10
4191015	1" PEX x 1" PEX x 1/2" PEX	Bag of 10
4191017	1" PEX x 1" PEX x 3/4" PEX	Bag of 10
4191051	1" PEX x 1/2" PEX x 1" PEX	Bag of 10
4191057	1" PEX x 1/2" PEX x 3/4" PEX	Bag of 10
4191071	1" PEX x 3/4" PEX x 1" PEX	Bag of 10
4191077	1" PEX x 3/4" PEX x 3/4" PEX	Bag of 10



1st, 2nd, & 3rd  
Measurements

## F1960 PEX EXPANSION FITTINGS - LF BRASS

MrPEX® Lead Free Brass fittings comply with NSF 61, which allows the product to contain no more than 0.25% lead.



### F1960 PEX Ring

PART#	TYPE	UNIT
4600500	1/2" PEX	Bag of 50
4600750	3/4" PEX	Bag of 25
4601000	1" PEX	Bag of 10



### F1960 LF Brass - Coupling

PART#	TYPE	UNIT
4811075	1" PEX x 3/4" PEX	Bag of 25
4815050	1/2" PEX x 1/2" PEX	Bag of 50
4817550	3/4" PEX x 1/2" PEX	Bag of 50
4817575	3/4" PEX x 3/4" PEX	Bag of 25
4811010	1" PEX x 1" PEX	Bag of 25



### F1960 LF Brass - Threaded Adapter, Male

PART#	TYPE	UNIT
4821075	1" PEX x 3/4" NPT	Bag of 25
4825050	1/2" PEX x 1/2" NPT	Bag of 25
4825075	1/2" PEX x 3/4" NPT	Bag of 25
4827510	3/4" PEX x 1" NPT	Bag of 25
4827550	3/4" PEX x 1/2" NPT	Bag of 25
4827575	3/4" PEX x 3/4" NPT	Bag of 25
4821010	1" PEX x 1" NPT	Bag of 25



### F1960 LF Brass - Threaded Adapter, Female

PART#	TYPE	UNIT
4835050	1/2" PEX x 1/2" NPT	Bag of 25
4835075	1/2" PEX x 3/4" NPT	Bag of 25
4837550	3/4" PEX x 1/2" NPT	Bag of 25
4837575	3/4" PEX x 3/4" NPT	Bag of 25
4831010	1" PEX x 1" NPT	Bag of 25



### F1960 LF Brass - Plug

PART#	TYPE	UNIT
4840500	1/2" PEX	Bag of 100
4840750	3/4" PEX	Bag of 50
4841000	1" PEX	Bag of 50

### F1960 LF Brass - Sweat Adapter Male

PART#	TYPE	UNIT
4841010	1" PEX x 1" CU	Bag of 25
4845050	1/2" PEX x 1/2" CU	Bag of 50
4845075	1/2" PEX x 3/4" CU	Bag of 25
4847550	3/4" PEX x 1/2" CU	Bag of 25
4847575	3/4" PEX x 3/4" CU	Bag of 25



### F1960 LF Brass - Sweat Adapter Female

PART#	TYPE	UNIT
4851010	1" PEX x 1" CU	Bag of 25
4855050	1/2" PEX x 1/2" CU	Bag of 50
4855075	1/2" PEX x 3/4" CU	Bag of 25
4857575	3/4" PEX x 3/4" CU	Bag of 25



### F1960 LF Brass - Elbow

PART#	TYPE	UNIT
4861010	1" PEX x 1" PEX	Bag of 25
4861075	1" PEX x 3/4" PEX	Bag of 25
4865050	1/2" PEX x 1/2" PEX	Bag of 50
4867550	3/4" PEX x 1/2" PEX	Bag of 25
4867575	3/4" PEX x 3/4" PEX	Bag of 25



### F1960 LF Brass - Threaded Elbow, Male

PART#	TYPE	UNIT
4875050	1/2" PEX x 1/2" NPT	Bag of 25
4875051	1/2" PEX x 1/2" Drop Ear	Bag of 25
4877550	1/2" PEX x 3/4" NPT	Bag of 25
4877575	3/4" PEX x 3/4" NPT	Bag of 25







**F1960 LF Brass - Tee**

PART#	TYPE	UNIT
4891011	1" PEX x 1" PEX x 1" PEX	Bag of 10
4891015	1" PEX x 1" PEX x 1/2" PEX	Bag of 25
4891017	1" PEX x 1" PEX x 3/4" PEX	Bag of 25
4891051	1" PEX x 1/2" PEX x 1" PEX	Bag of 25
4891057	1" PEX x 1/2" PEX x 3/4" PEX	Bag of 25
4891071	1" PEX x 3/4" PEX x 1" PEX	Bag of 25
4891075	1" PEX x 3/4" PEX x 1/2" PEX	Bag of 25
4891077	1" PEX x 3/4" PEX x 3/4" PEX	Bag of 25
4895055	1/2" PEX x 1/2" PEX x 1/2" PEX	Bag of 50
4895057	1/2" PEX x 1/2" PEX x 3/4" PEX	Bag of 25
4897555	3/4" PEX x 1/2" PEX x 1/2" PEX	Bag of 25
4897557	3/4" PEX x 1/2" PEX x 3/4" PEX	Bag of 25
4897571	3/4" PEX x 3/4" PEX x 1" PEX	Bag of 25
4897575	3/4" PEX x 3/4" PEX x 1/2" PEX	Bag of 25
4897577	3/4" PEX x 3/4" PEX x 3/4" PEX	Bag of 25

# ACCESSORIES

## F1807 LF Brass – Inline Ball Valve, Full Port

PART#	TYPE	UNIT
4100050	1/2" PEX x 1/2" PEX	Box of 10
4100075	3/4" PEX x 3/4" PEX	Box of 8
4100010	1" PEX x 1" PEX	Box of 4



## F1807 LF Brass – Tub Ell, 6" x 2 1/4"

PART#	TYPE	UNIT
4100057	1/2" PEX	Bag of 50





### F1807 LF Brass – Straight Stop

PART#	TYPE	UNIT
4109153	1/2" PEX x 3/8" Comp.	Box of 24



### F1807 LF Brass – Water Heater Flex Connector

PART#	TYPE	UNIT
4109277	3/4" PEX x 3/4" FIP Swivel	Box of 10



### F1807 LF Brass – Water Heater Flex Connector w/ Ball Valve

PART#	TYPE	UNIT
4109278	3/4" PEX x 3/4" FIP Swivel	Box of 25



### F1807 LF Brass – Washing Machine Box

PART#	TYPE	UNIT
4109301	1/2" PEX	Each



### F1807 LF Brass – Ice Maker Box

PART#	TYPE	UNIT
4109302	1/2" PEX x 1/4" Comp.	Each



### Tube Talon

PART#	TYPE	UNIT
4101050	1/2"	Bag of 100
4101075	3/4"	Bag of 100
4101010	1"	Bag of 50



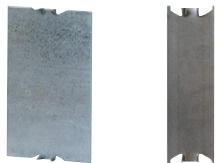
### Stub Out Bracket, Galvanized Steel

PART#	TYPE	UNIT
4108002	2" x 20"	Box of 50



### Grommet for Galvanized Bracket or Metal Stud

PART#	TYPE	UNIT
4108050	1/2"	Bag of 100
4108075	3/4"	Bag of 100
4108010	1"	Bag of 25



### Nail Guard, 18ga, Self Nailing Plates

PART#	TYPE	UNIT
4108101	1.5" x 3", Single Plate	Box of 100
4108102	3" x 5", Double Plate	Box of 100
4108103	1.5" x 5" Single Plate	Box of 100

### Metal Drop Ear Bend Support

PART#	TYPE	UNIT
7140501	1/2" PEX	Bag of 25



### F1807 LF Brass – Drop Ear Elbow

PART#	TYPE	UNIT
4100055	1/2" PEX x 1/2" FIP	Bag of 10
4100077	3/4" PEX x 3/4" FIP	Bag of 10
4100157	1/2" PEX x 3/4" FIP	Bag of 10



# PLUMBING TOOLS

## INSTALLATION TOOLS

MrPEX® Installation Tools features tube handling tools for PEX as well as prep and press fitting tools.



### Compact Adjustable Tubing Uncoiler

PART#	TYPE	UNIT
8110720	Heavy Duty	Each



### Pipe Cutter

PART#	TYPE	UNIT
8120878	For All Sizes Up to 1 1/4" PEX & PAP	Each



### Simple Cutter

PART#	TYPE	UNIT
8120879	For 3/8" – 1" Tubing	Each

### Feed Eye with bracket for PEX Tubing

PART#	TYPE	UNIT
8110722	For All Sizes Up to 1 1/4" PEX & PAP	Each

### Bracket for #8110721 & 8110722

PART#	TYPE	UNIT
8110723	For 3/8" – 1" Tubing	Each

### Manual Press Tool for PEX (F1807 & F2159)



PART#	TYPE	UNIT
8400500	1/2" Stainless Steel Sleeves	Each
8400750	3/4" Stainless Steel Sleeves	Each
8401000	1" Stainless Steel Sleeves	Each

### Manual Press Tool for PEX (F1807 & F2159), Compact



PART#	TYPE	UNIT
8401050	1/2" Stainless Steel Sleeves	Each

### Manual Press Tool for PEX (F1807 & F2159), Combination



PART#	TYPE	UNIT
8405075	1/2" & 3/4" Stainless Steel Sleeves	Each

### Manual PEX Expander Tool Kit (F1960)



PART#	TYPE	UNIT
8500001	Manual F1960 PEX Expander Tool Kit - 1/2, 3/4, 1	Each

### PEX Expander Heads (F1960)

PART#	TYPE	UNIT
8500500	1/2"	Each
8500750	3/4"	Each
8501000	1"	Each







## LOOP CAD

MrPEX® is pre-loaded in LoopCAD®

MrPEX's radiant heating and snow melt systems are now available preloaded in LoopCAD. Not only can you design your circuit layouts, perform load calculations, and generate all hydronic data, you can also generate a complete materials list and quotation based on MrPEX's detailed product information. The MrPEX® design recommendations and data are also built in to the Add-on for you.



Below you can download LoopCAD with the MrPEX® Add-on already preloaded. Initially this will be in trial mode, giving you 30-days to evaluate the software for free. If you are downloading this as an update and you have already entered an Activation Code, the program automatically switch to the full version for you.

Download of this release is available at: [www.LoopCAD.com/mrpex](http://www.LoopCAD.com/mrpex)

For additional MrPEX® information go to [www.mrpexsystems.com](http://www.mrpexsystems.com).



## LIMITED WARRANTY—EFFECTIVE MAY 1, 2018

### VALID FOR MrPEX® SYSTEMS POTABLE PEX-a TUBING, FITTINGS & OTHER SELECT PLUMBING PRODUCTS

## LIMITED WARRANTY

MrPEX® Systems warrants to its "clients" that the MrPEX® Systems POTABLE PEX-a Tubing and Plumbing Components, used for Plumbing applications, sold hereunder shall be free from defects in material and workmanship and that the components will conform to specifications stated in MrPEX® Systems Publications. This Limited Warranty shall expire thirty (30) years for the MrPEX® Systems POTABLE PEX-a tubing, five (5) years for Lead Free Brass Fittings, PPSU Fittings and two (2) years for all other components, from date of shipment by MrPEX® Systems unless otherwise specified in writing. MrPEX® Systems further warrants that products listed are compatible with Each other, but at the same time we disclaim warranty for claims related to compatibility with non-MrPEX® Systems products. Components sold under this Limited Warranty must (1) be selected, designed, and installed according to the instructions in MrPEX® Systems Publications using appropriate trade workmanship and according to the local building code(s), (2) remain in their originally installed location, (3) are connected to appropriate water and power supplies, (4) show no evidence of tampering, mishandling, neglect, accidental damage, modification or repair without the approval of MrPEX® Systems or damage done to the product by anyone other than MrPEX® Systems authorized personnel. A ten (10) year system warranty shall be offered when a potable water system is installed solely with MrPEX® Systems tubing, fittings, and components. MrPEX® Systems' sole obligation hereunder shall be, at its option, to issue credit, repair or replace any component or part thereof which is proved to be other than as warranted. No allowance shall be made to clients for transportation or labor charges unless such charges are authorized in writing in advance by MrPEX® Systems. Any repairs without the express written consent of MrPEX® Systems, shall render this Limited Warranty invalid. Warranty claims must be received by MrPEX® Systems within the applicable warranty period and within thirty (30) days from the time when the cause for the claim occurred or was discovered. Upon receipt of prompt notice of a warranty claim, MrPEX® Systems shall have ten (10) business days in which to determine whether it acknowledges responsibility for any asserted defects in material or workmanship and the appropriate action to be taken. This Limited Warranty and any claims arising from breach of warranty, or any other claim arising hereunder, shall be governed and construed under the laws of the State of Minnesota. No other persons than MrPEX® Systems employees have any express or implied authority to bind MrPEX® Systems to any agreement or warranty of any kind without the express written consent of MrPEX® Systems.

### Disclaimer of Warranties:

MrPEX® Systems disclaims any warranty not provided herein including the implied warranty of merchantability and implied warranty of fitness for a particular purpose. It is expressly understood that MrPEX® Systems is not responsible for any consequential or other damages that may arise from using MrPEX® Systems components. Damage resulting from water freezing in the tubing does not constitute a defect in material or workmanship, and shall not be covered by this warranty. MrPEX® Systems tubing may not be stored in direct sunlight for any period longer than three weeks or this limited warranty becomes invalid. Also, exposure to direct or considerable indirect sunlight after installation voids this limited warranty. MrPEX® Systems disclaims any statutory or implied warranty of habitability. MrPEX® Systems further disclaims any responsibility for losses, expenses, inconveniences, special, indirect, secondary, incidental or consequential damages arising from ownership or use of the articles sold hereunder. There are no warranties which extend beyond the face hereof.

### General Terms and Conditions

These terms and conditions apply to all MrPEX® products. All customers are subject to credit approval before shipment of product.

### Price Changes

MrPEX® reserves the right to change published prices and product availability without prior notification. Our policy is a minimum notification period of 30 days, but under unusual circumstances it may become necessary to shorten this period to meet market needs.

### Terms

Terms are 30 days Net or per separate agreement with individual customer.

### Minimum Order Quantity

The minimum order is \$300.00 net price. For orders less than \$300.00 net, an order processing charge of \$15.00 will be applied.

### Finance Charge

A finance charge of one and one half percent (1.5%) per month will be charged on all overdue balances. This corresponds to an eighteen percent (18%) annual percentage rate (APR).

### Taxes

We are required by law to charge applicable state and local taxes unless a sales tax exemption certificate has been provided.

### Shipping

We will ship orders received as soon as possible. We will try to communicate regarding possible back-orders. Back-orders will be billed separately. Note that items may sometimes be shipped from separate locations. Orders will ship from closest warehouse location only when ordered products are available from there.

### Freight Claims, Shortages

If material is received short or damaged, the receiver must require the agent of the transport company to make a notation of delivery condition on the freight bill. If, or when, the goods is arrival inspected and it is found to have a damage likely caused by the freight company, the receiver must report the claim to MrPEX® Systems. We must receive such a claim within 48 hours of the receipt of goods.



[mrpexsystems.com](http://mrpexsystems.com)

**Corporate Office**

📍 5300 Alpine Drive NW, Suite 210  
Ramsey, MN 55303  
☎️ (800) 716-3406  
✉️ [sales@mrpexsystems.com](mailto:sales@mrpexsystems.com)  
✉️ [support@mrpexsystems.com](mailto:support@mrpexsystems.com)

**Order Department**

**Order by fax or email**  
☎️ (952) 423-6114  
☎️ (800) 716-3406  
✉️ [order@mrpexsystems.com](mailto:order@mrpexsystems.com)