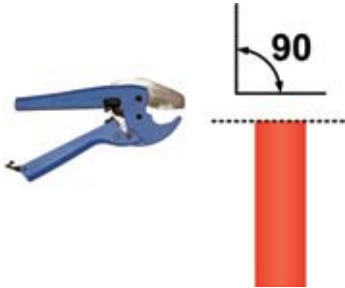


CONNECTING THE LOOPS TO THE MANIFOLD

The MrPEX® residential manifolds use a 20mm Eurokonus (EK20) connection also known as G 3/4". You must use one of the MrPEX® fitting assemblies that fit our manifold. Use either an EK compression fitting assembly for "MrPEX® PEX Tubing" and "MrPEX® PEX-AL-PEX Tubing", the press fitting to EK for "MrPEX® PEX-AL-PEX Tubing" only, or a F1960 PEX expansion fitting. All types of tubing can be connected to our manifolds using one of these style fittings.

FOR PEX FITTING ASSEMBLY

- › Start by making a square cut at the end of the tube even with the bottom of the manifold outlet nipple (without the fitting) using a suitable tubing cutter.
If PEX-AL-PEX tubing is used, also ream the tubing using our reaming tool.



- › For three piece compression fittings:

STEP 1-2 Slide on the large nut over the tubing (threads facing up).

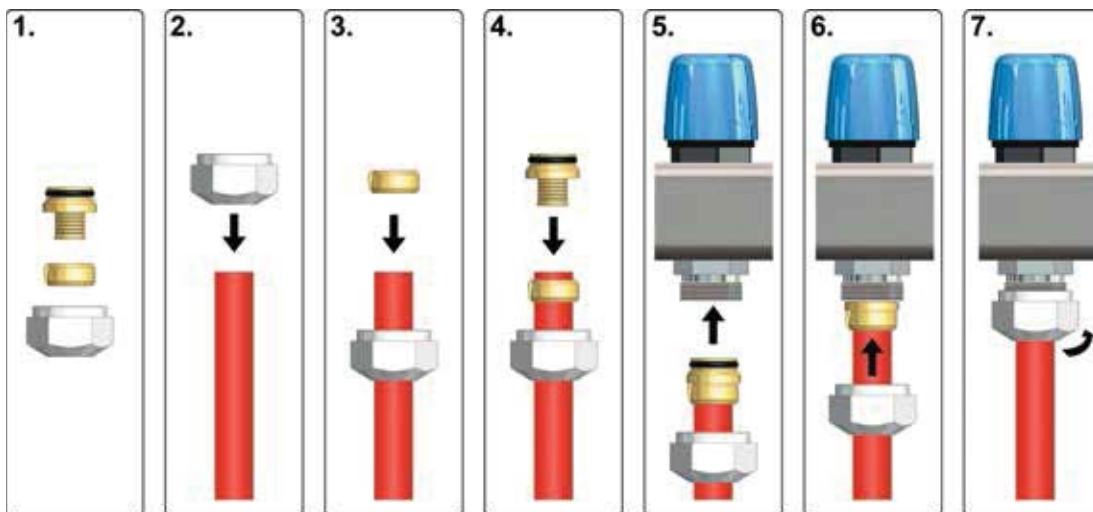
STEP 3 Slide the compression ring on the pipe if applicable.

STEP 4 Put the insert into the end of the pipe and push it all the way in until it stops. You can use a non-metallic object such as a block of wood and gently tap it to make sure it is completely seated.

STEP 5 Slide the compression ring up against the insert. Lubricate the o-ring at the top of the insert.

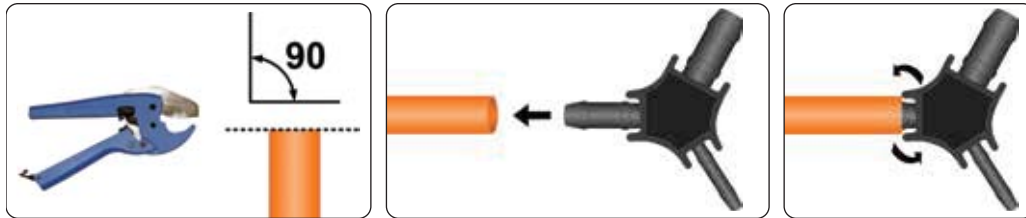
STEP 6 Gently push the insert into the manifold seat making sure the o-ring doesn't get caught.

STEP 7 Holding the tubing straight and in place, slide up the compression nut and thread it onto the manifold outlet. Tighten nut with suitable wrench. The tubing will relax slightly under the pressure, so the fitting needs to be tightened a second time after about 20–30 minutes to ensure tightness.



FOR PEX-AL-PEX PRESS FITTING ASSEMBLY:

- › Start by making a square cut at the end of the tube even with the bottom of the manifold outlet nipple (without the fitting) using a suitable tubing cutter.
If PEX-AL-PEX tubing is used, also ream the tubing using our reaming tool.



STEP 1-2 Start by attaching the press fitting assembly to the manifold.

STEP 3 Tighten nut with suitable wrench.

STEP 4-5 Slide the tubing into the press fitting until you can see the end of the tube in the view port. Lubricating the inside of the pipe may aid the installation.

STEP 6 Using either a manual or battery press tool, complete the fitting. Make sure that the press jaw is up against the shoulder of the fitting.

