

MrPEX® SUBMITTAL PEX-AL-PEX

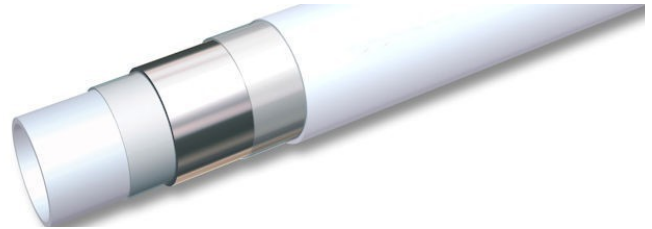


14799 Jackal St. NW, Suite 100
 Ramsey, MN 55303
 support@mrpexsystems.com

Project Name _____ Date _____
 Submitted By _____ Phone _____
 Project Location _____ MrPEX® Rep. _____
 Engineer _____ Contractor _____
 Approval _____ P.O. Number _____

MrPEX® PEX-AL-PEX TUBING

MrPEX® PEX-AL-PEX tubing is a composite pipe manufactured to ASTM F 1281-2005 (CSA B137.10). MrPEX® PEX-AL-PEX tubing is certified by NSF (NSF-rfh) and temperature/pressure rated by the Hydrostatic Stress Board of PPI (Plastics Pipe Institute) in accordance with ASTM F 1281-2005 (CSA B137.10) to 160 psi at 200°F. Not for potable water.



- Backed by our 30 Year Warranty
- Available in nominal sizes 1/2" thru 1"
- Bending radius = 5 times OD
- 100% gas/oxygen tight

Standards/Listings

- ASTM F1281-2005
- ANSI/AWWA C903
- CSA B137.10
- NSW-pw-G
- UPC No. 4746



Operating Temperature and Pressure

Max Temperature	Max Pressure
200°F	160 psi

PEX-AL-PEX VOLUME

Size	Volume
1/2" PEX-AL-PEX	1.02 gallons/100 ft.
5/8" PEX-AL-PEX	1.66 gallon/100 ft.
3/4" PEX-AL-PEX	2.65 gallons/100 ft.
1" PEX-AL-PEX	4.28 gallons/100 ft.

ASTM F1281 PEX-AL-PEX TUBING DIMENSION CHART

SIZE	OD	WALL	ID
1/2" PAP	0.630"	0.065"	0.500"
5/8" PAP	0.787"	0.075"	0.637"
3/4" PAP	0.984"	0.089"	0.806"
1" PAP	1.260"	0.118"	1.024"