

# Hydronic Control Panels

**MrPEX<sup>®</sup> Systems hydronic Control Panels are custom designed and precision shop-built using only the finest components. Mounted on a solid HDPE back panel with a bubble level & wall hanger bracket, control panels arrive at the job-site ready for installation.**

- » Radiant Systems
- » Snowmelting
- » Hydronic Air Handlers
- » Baseboard Systems
- » Gas Boilers
- » Wood or Coal Fired Boilers
- » Geothermal
- » Solar

## WALL MOUNT PANELS



## HYDRONIC CONTROL PANELS FEATURES

- » Installer ready (as a module)
- » Custom designed for the project
- » Complete drawing set
- » Factory built and tested
- » Shipped ready for installation
- » Finest grade components
- » Designed for serviceability, with circuit isolation for easy service and component replacement
- » Pre-wired with pumps, actuators, and controls
- » Din rail wiring connections

## STANDARD COMPONENTS

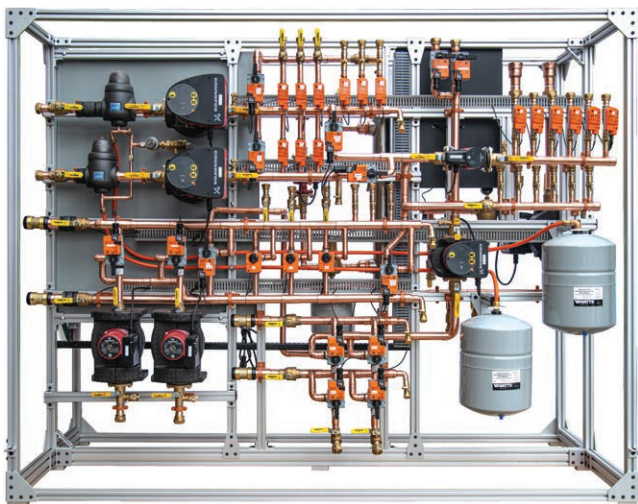
- » Zone Valves
- » Backflow Preventer/Regulator
- » Air Eliminators
- » Variable Speed Pumps
- » Digital Temperature Gauges
- » Controls
- » Expansion Tanks
- » Ball Valves
- » Isolation Pump Flanges
- » Modular Electrical Enclosure
- » Din Mount Connectors and Relays
- » HDPE Back Panel (virtually indestructible)
- » Hanger System
- » Copper Piping

## OPTIONAL COMPONENTS

- » Temperature Mixing
- » DHW Heating
- » Modulating Valves
- » Glycol Feed Systems
- » DDC Control Connections
- » Up to 4" Pipe Size

# Frameset Systems

MrPEX® Systems designs and manufactures complete self contained frame systems that allow installers to position the complete system on the floor without any wall attachment. These systems can provide all of the necessary components for a complete system.



FRONT OF FRAMESET



BACK OF FRAMESET

## FRAMESET FEATURES

- » Custom designed and built to your application
- » Self contained system for fast and easy installation
- » Adjustable feet to level for any surface
- » All component controls and distribution in one place
- » Easy to service
- » Space saving, what used to take up tons of wall space can now be installed in a compact area
- » Complete control solution and distribution system in one product

*Framesets can include all of the systems needed for any application. This frameset example includes:*

## STANDARD COMPONENTS

- » Hydronic geothermal system with two high temp water-to-water geo units
- » Six radiant heating and cooling zones with 10 actuator sub-zones
- » Three hydronic air handlers with modulating reheat
- » Simultaneous heating and cooling
- » Modulating make-up air system with heating and cooling feeds
- » Two tank indirect DHW heating
- » Two unit flow center with particle filter
- » Stainless heat exchanger for make-up air glycol system
- » Variable speed pump systems
- » Onboard IDC

