

MAY 2024

A close-up, soft-focus photograph of a golden retriever puppy lying down. The puppy has thick, wavy golden fur and floppy ears. It is looking directly at the camera with dark, expressive eyes. A small, light-colored bone-shaped tag is visible on its collar. The background is a bright, out-of-focus indoor setting with light streaming through a window.

Product Catalog

2 0 2 4

RADIANT HEATING & COOLING | PLUMBING | SNOWMELT | CONTROLS



Combination Method

Radiant Ceiling

Suspended Panels

Suspended Gypsum

Retro Panels

Slab Installation

Homerun Method

Branch & Tee Method

ABOUT MrPEX® SYSTEMS

MrPEX® Systems is one of the leading North American system suppliers of residential and commercial radiant heating/cooling, snowmelt systems, and PEX-a domestic hot and cold water systems. We are a small but very experienced team on the fast track for growth in the USA and Canadian market. We are the exclusive providers of a unique PEX-a pipe from LK PEX AB in Sweden. As our core product, the MrPEX® PEX-a Tubing, is considerably more flexible, kink-resistant and able to hold more pressure than any other Pex Tubing on the market today, plus comes with an extensive 30 year warranty!

Combined with our highly technical knowledge and dedication to customer service, it's no wonder MrPEX® Systems is one of the fastest growing radiant system suppliers in North America.

WHY MrPEX®?

MrPEX® Systems provides all components you need for a superior system, whether radiant heating/cooling, PEX-a plumbing, or snowmelt systems. This includes tubing, fittings, manifolds, controls and accessories that are matched for high performance and reliability over many years of service. When used together, these components provide trouble free installation and long-term reliability. The MrPEX® tubing and fittings meet current national standards of performance and dimensional tolerances. The system package and product offering is growing continually with an emphasis on taking advantage of sustainable energy sources whenever possible.

Additionally, we also offer IDC, the state-of-the-art PC based intelligent control systems that delivers optimized comfort and maximized efficiency by coordinating HVAC, Indoor Air Quality, and Hydronic Systems in one control. IDC is also capable of energy monitoring and remote access from anywhere in the world.

WHO IS MrPEX®?

MrPEX®—Tomas Lenman—started at Wirsbo Bruks AB in Sweden as a development engineer in 1971, developing the very first PEX process ever invented. He developed many Standard Specifications for PEX Tubing in Europe and Australia. MrPEX® wrote the ASTM F 876/877 for PEX Tubing during 1982 -84. In 1982 he co-authored the book "Water and Pipes". He founded and managed Wirsbo Company (USA) 1984 -1992 and continued consulting for this group until 1996. He authored the CSA B137.5 standard for PEX Tubing in 1989. MrPEX® managed the successful start-up of Roth Industries PEX Tubing Division 1997 -2001 after which he started his own radiant floor heating company: MrPEX® Systems using PEX Tubing with exclusive distribution in North America for LK PEX AB in Sweden. The unique production process is invented by Mr. Lennart Aagren of Sweden, previously manager of Uponor Innovation AB for many years, and his second innovation of a PEX Tubing manufacturing process. No one has more knowledge and experience with PEX Tubing and Radiant Floor Heating Systems than MrPEX®.



TABLE OF CONTENTS

RADIANT HEATING

| | |
|--|-----------|
| TUBING | 2 |
| MrPEX® PEX-a Tubing w/ Oxygen Barrier | 2 |
| MrPEX® PEX-AL-PEX Tubing | 3 |
| MANIFOLDS | 4 |
| 1 1/4" Stainless Steel Manifolds, 2-12 Loops | 4 |
| Composite Manifold, 2-12 Loops | 5 |
| 1 1/2" Large Chrome Plated Brass Manifolds For 5/8"-1" PEX & 5/8" - 3/4" PEX-AL-PEX Tubing, 2-12 Loops | 6 |
| 1 1/2" Large Stainless Steel Manifolds For 5/8" - 1" PEX & 5/8" - 3/4" PEX-AL-PEX Tubing | 7 |
| MANIFOLD FITTINGS | 8 |
| Manifold Options | 8 |
| PEX FITTINGS | 9 |
| PEX Fittings & Euroconus (EK) Fittings | 9 |
| PEX-AL-PEX FITTINGS | 11 |
| Press Fittings for PEX-AL-PEX Tubing | 11 |
| Compression Fittings for PEX-AL-PEX Tubing | 13 |

| | |
|---|-----------|
| PEX FITTINGS | 14 |
| F2159 PPSU PEX Press Fittings | 14 |
| F1807 PEX Press Fittings - LF Brass | 15 |
| F1960 PPSU PEX Expansion Fittings | 17 |
| F1960 PEX Expansion Fittings - LF Brass | 19 |
| CONTROLS | 21 |
| Zoning Controls | 21 |
| Wireless Zone Controls | 24 |
| SnowMelt Controls | 26 |
| Integrated Dynamic Control | 27 |
| Controls | 27 |
| TOOLS & ACCESSORIES | 28 |
| Heat Transfer Accessories | 28 |
| Manifold Cabinets | 30 |
| Tube Fasteners & Organizers | 31 |
| Installation Tools | 33 |
| SPARE PARTS | 36 |

PRE-INSULATED TUBING

| | |
|---|-----------|
| PRE-INSULATED PEX-A TUBING | 40 |
| Accessories | 42 |

PLUMBING

| | |
|---|-----------|
| TUBING | 44 |
| MrPEX® Potable PEX-a Tubing | 44 |
| MrPEX Potable Pipe-In-Pipe PEX-a Tubing | 46 |
| MULTIPORT TEES | 47 |
| Composite Multiport Tee's, F2159 Fittings | 47 |
| Composite Multiport Tee's, F1960 Fittings | 49 |
| PPSU FITTINGS | 50 |
| F2159 PEX Press Fittings - PPSU | 50 |
| F1960 PEX Expansion Fittings - PPSU | 52 |
| LF BRASS FITTINGS | 55 |
| F1807 PEX Press Fittings - LF Brass | 55 |
| F1960 PEX Expansion Fittings - LF Brass | 59 |
| PLUMBING TOOLS | 62 |
| Installation Tools | 62 |
| LOOP CAD | 64 |





TUBING

A Slinky[®] is suspended on elastic threads around itself. There is no reinforcement along its length. Thus making it remarkably flexible and free to move. The shape remains round. It never kinks, although the bending radius is minimal.

Similarly, PEX molecular chains extend around the tubing like the Slinky[®] string circles around itself. This makes MrPEX[®] Tubing extremely flexible and less likely to kink. The molecular chain is aligned to resist stress around its perimeter. It is unusually strong, resisting inside pressure.

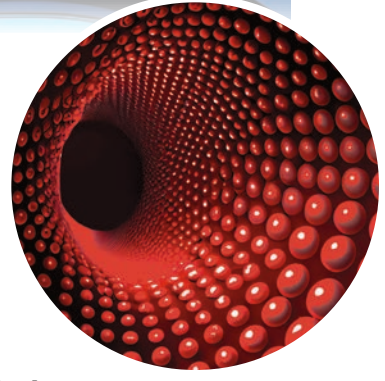
The molecular orientation is achieved during extrusion in a very unique process. Crosslinking occurs simultaneously with the orientation. Peroxide



crosslinking guarantees optimal tubing properties.

Oxygen Diffusion

MrPEX[®] Barrier PEX Tubing has an Oxygen Diffusion Barrier which meets the stringent requirements of the European DIN 4726 standard. This standard restricts the amount of oxygen that is allowed to permeate the pipe and affect corrodible cast iron or steel components within the system. The standard restricts permeation to less than or equal to 0.10 g/(m³ d). This is considered to be a safe level.



MrPEX[®] PEX-a TUBING W/ OXYGEN BARRIER

MrPEX[®] Barrier PEX tubing is Cross-Linked Polyethylene (PEX-a) manufactured in accordance with ASTM F 876. Tubing is listed to ASTM F 876/877 (CSA B137.5) and ICC-PMG 1053, and also certified by NSF (NSF-rfh). MrPEX[®] Barrier PEX tubing is rated by the Hydrostatic Stress Board of PPI (Plastics Pipe Institute) at: 160 psi at 73.4°F; 100 psi at 180°F; 80 psi at 200°F. MrPEX[®] Barrier PEX tubing has an EVOH oxygen barrier that meet DIN 4726. Tubing sizes 3/8" through 3/4" also has a thin coating of PE on top of the barrier in order to reduce noise when installed in joist applications and Aluminum heat transfer plates.



| PART# | TYPE | UNIT |
|---------|------|---------------|
| 1210060 | 3/8" | 600 ft. Coil |
| 1210100 | 3/8" | 1000 ft. Coil |
| 1210240 | 3/8" | 2400 ft. Coil |
| 1220030 | 1/2" | 300 ft. Coil |
| 1220050 | 1/2" | 500 ft. Coil |
| 1220100 | 1/2" | 1000 ft. Coil |
| 1220120 | 1/2" | 1200 ft. Coil |
| 1220160 | 1/2" | 1600 ft. Coil |
| 1230030 | 5/8" | 300 ft. Coil |
| 1230033 | 5/8" | 330 ft. Coil |
| 1230050 | 5/8" | 500 ft. Coil |
| 1230100 | 5/8" | 1000 ft. Coil |
| 1230110 | 5/8" | 1100 ft. Coil |
| 1240010 | 3/4" | 100 ft. Coil |

MrPEX® PEX-a Tubing w/ Oxygen Barrier (cont.)

| PART# | TYPE | UNIT |
|---------|---------|--------------------------|
| 1240030 | 3/4" | 300 ft. Coil |
| 1240040 | 3/4" | 400 ft. Coil |
| 1240050 | 3/4" | 500 ft. Coil |
| 1240100 | 3/4" | 1,000 ft. Coil |
| 1241020 | 3/4" | Bag of 10 - 20ft. Sticks |
| 1250010 | 1" | 100 ft. Coil |
| 1250030 | 1" | 300 ft. Coil |
| 1251020 | 1" | Bag of 10 - 20ft. Sticks |
| 1260015 | 1"-1/4" | 150 ft. Coil |
| 1261010 | 1"-1/4" | Bag of 5 - 20ft. Sticks |
| 1270015 | 1"-1/2" | 150 ft. Coil |
| 1271010 | 1"-1/2" | Bag of 5 - 20ft. Sticks |
| 1280020 | 2" | 200 ft. Coil |
| 1281010 | 2" | Bag of 5 - 20ft. Sticks |

MrPEX® PEX-AL-PEX TUBING

MrPEX® PEX-AL-PEX tubing is a composite pipe manufactured to ASTM F 1281-2005 (CSA B137.10). MrPEX® PEX-AL-PEX tubing is certified by NSF (NSF-rfh) and temperature/pressure rated by the Hydrostatic Stress Board of PPI (Plastics Pipe Institute) in accordance with ASTM F 1281-2005 (CSA B137.10) to 160 psi at 200°F. Not for potable water.

| PART# | TYPE | UNIT |
|---------|------|---------------|
| 1320025 | 1/2" | 250 ft. Coil |
| 1320030 | 1/2" | 300 ft. Coil |
| 1320100 | 1/2" | 1000 ft. Coil |
| 1330040 | 5/8" | 400 ft. Coil |
| 1330050 | 5/8" | 500 ft. Coil |
| 1340030 | 3/4" | 300 ft. Coil |
| 1340050 | 3/4" | 500 ft. Coil |
| 1350010 | 1" | 100 ft. Coil |
| 1350030 | 1" | 300 ft. Coil |



MANIFOLDS

1 1/4" STAINLESS STEEL MANIFOLDS, 2-12 LOOPS

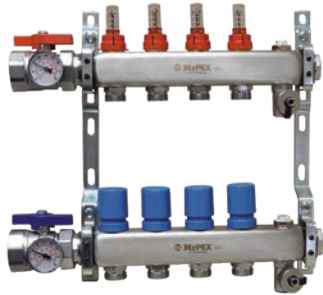
MrPEX[®] 1 1/4" Stainless Steel Manifold is made from high quality stainless steel, and is offered in 2 through 12 loop configurations. The manifold comes mounted on brackets and it is equipped with full port ball valves provided with thermometers, manual air vents and fill/drain valves. The branch Cv value is 1.39.

The SUPPLY (upper) manifold is fitted with balancing flowmeters with readable range of 0 to 2 GPM that allow flow adjustment of each individual loop. The flow meters have a brass body and the sight glass is made from temperature and impact resistant plastic material, all components are antifreeze resistant up to a 50% mix.

The RETURN (lower) manifold, has manual on/off valves that controls the flow for each individual circuit. The manual knob can be removed to accommodate the MrPEX[®] actuators VA 10 Adapter (part# 5120700 & 5120701).

The branches have Eurokonus, (EK20) connections and all MrPEX EK 20 compression fitting assemblies (PEX to EK 20 or PEX-AL-PEX to EK 20) can be used to connect tubing up to 5/8" to manifold

Supply and return mains can be connected from either left or right sides. The manifold comes ready for a left-hand connection. Connection from the right can be done by removing the manifold body from the brackets and flipping them over.



* Shipped as shown



MrPEX[®] 1 1/4" Stainless Steel Manifold Assembly w/Flowmeter and Ball Valve

| PART# | TYPE | UNIT |
|---------|-------------|------|
| 3250200 | 2 Branches | Each |
| 3250300 | 3 Branches | Each |
| 3250400 | 4 Branches | Each |
| 3250500 | 5 Branches | Each |
| 3250600 | 6 Branches | Each |
| 3250700 | 7 Branches | Each |
| 3250800 | 8 Branches | Each |
| 3250900 | 9 Branches | Each |
| 3251000 | 10 Branches | Each |
| 3251100 | 11 Branches | Each |
| 3251200 | 12 Branches | Each |

G 1 1/4" Flat Gasket X G 1 1/4" Flat Gasket Union Elbow Kit

| PART# | TYPE | UNIT |
|---------|-----------------|----------|
| 3250007 | Union Elbow Kit | Set of 2 |

G 1 1/4" Flat Gasket X 1" Female NPT Adapter

| PART# | TYPE | UNIT |
|---------|--------------------|----------|
| 3250010 | Female NPT Adapter | Set of 2 |

Manifold Wrench for EK20 Fittings

| PART# | TYPE | UNIT |
|---------|-------------|------|
| 3250011 | 27mm & 30mm | Each |

COMPOSITE MANIFOLD, 2-12 LOOPS

MrPEX® Composite Radiant Manifold is made from a durable high performance glass filled plastic designed to withstand high temperature and pressure. The manifold exceeds the oxygen diffusion standard DIN 4726 and is completely corrosion resistant. The manifold has flow capacity of 15.4 GPM with adjustable flowmeters for flows up to 1.00 GPM per loop, and comes partially assembled as a complete kit. The branch Cv value is 1.35.

Kit includes:

- A complete supply body with positive shut-off balancing flowmeters, thermometer, a Fill/Drain valve with Vent, and a blank end cap.
- A complete return body with on/off valves for manual shut-off, thermometer, a Fill/Drain valve with Vent, and a blank end cap.
- A set of mounting brackets
- A set of 1" NPT isolation union ball-valves.

Plastic cap on the return valve can be removed to accommodate valve actuator #5120700 or #5120701 (Adapter VA 90 part #5700090 is included). The branches have Eurokonus (EK 20) connections, and all MrPEX® EK 20 compression fitting assemblies (PEX to EK 20 or PEX-AL-PEX to EK 20) can be used to connect tubing up to 5/8" to the manifold. Single, 2 loop, and 3 loop add-on supply and return manifold sections and other accessories are sold separately to allow for easy add-on.

Composite Manifold, Valve & Flowmeter, Complete Kit

| PART# | TYPE | UNIT |
|---------|---------|------|
| 3810200 | 2 Loop | Each |
| 3810300 | 3 Loop | Each |
| 3810400 | 4 Loop | Each |
| 3810500 | 5 Loop | Each |
| 3810600 | 6 Loop | Each |
| 3810700 | 7 Loop | Each |
| 3810800 | 8 Loop | Each |
| 3810900 | 9 Loop | Each |
| 3811000 | 10 Loop | Each |
| 3811100 | 11 Loop | Each |
| 3811200 | 12 Loop | Each |



* Shipped as kit

Composite Manifold Sections, Valve & Flowmeter

| PART# | TYPE | UNIT |
|---------|--------|------|
| 3810001 | 1 Loop | Each |
| 3810002 | 2 Loop | Each |
| 3810003 | 3 Loop | Each |



Composite Manifold Elbow Set

| PART# | TYPE | UNIT |
|---------|-------------------------|----------|
| 3810007 | G 1" x G 1" Flat Gasket | Set of 2 |



1 1/2" LARGE CHROME PLATED BRASS MANIFOLDS FOR 5/8"-
1" PEX & 5/8" - 3/4" PEX-AL-PEX TUBING, 2-12 LOOPS

MrPEX® 1 1/2" Large Chrome Plated Brass Manifolds are made from high-quality extruded brass and offered in 2–12 loop fully assembled manifolds. The supply body has balancing valves with adjustable flowmeters for flows up to 2.0 gpm per loop. The return body is equipped with on/off valves. The manual plastic cap on the return valve can be removed to accommodate a valve actuator #5120700 or #5120701 (Adapter VA 10 part #5700010 is included with actuator #5120700 or #5120701). The return balancing valve disc is designed to enable exact adjustments of small flows while still being able to handle large flow with minimal resistance. The branch Cv value is 1.39 and the manifold body accommodates flows up to 20 gpm. Manifolds are mounted on brackets ready to mount. Inlets comes with a 1 1/4" female NPT union ball-valve and end caps feature vent and fill/drain. The branches have EK 25 (Eurokonus) connections, and all MrPEX® EK 25 fitting assemblies (PEX to EK25 or PEX-AL-PEX to EK 25) can be used to connect tubing to the manifold.



1 1/2" Chrome Plated Manifold, Valve &
Flowmeter, Fully Assembled

| PART# | TYPE | UNIT |
|---------|-------------|------|
| 3320200 | 2 Branches | Each |
| 3320300 | 3 Branches | Each |
| 3320400 | 4 Branches | Each |
| 3320500 | 5 Branches | Each |
| 3320600 | 6 Branches | Each |
| 3320700 | 7 Branches | Each |
| 3320800 | 8 Branches | Each |
| 3320900 | 9 Branches | Each |
| 3321000 | 10 Branches | Each |
| 3321100 | 11 Branches | Each |
| 3321200 | 12 Branches | Each |

Type- G 1 1/4" Flat Gasket X G 1 1/4" Flat Gasket

| PART# | TYPE | UNIT |
|---------|-----------------|----------|
| 3250007 | Union Elbow Kit | Set of 2 |

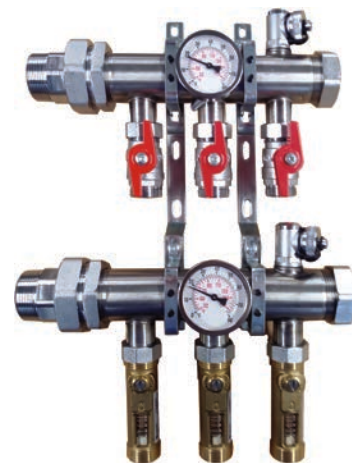


1 1/2" LARGE STAINLESS STEEL MANIFOLDS FOR 5/8" - 1" PEX & 5/8" - 3/4" PEX-AL-PEX TUBING

MrPEX® 1 1/2" Stainless Steel Manifolds are made from high-quality Type 304 stainless steel and comes fully assembled in 3–13 loop configurations. The manifold body supply and return inlet comes with 1 1/2" NPT flat gasket union to aid in installation. End cap, vent, drain/purge valve come factory mounted on the body. The branches come with G 1" x EK 25 flat gasket on/off valves on the supply, and G 1" x EK 25 flat gasket inline visual flowmeter with built-in balancing valves on the return. Use any of the MrPEX® EK 25 fitting assemblies (PEX to EK 25 or PEX-AL-PEX to EK 25) to connect tubing to the manifold.

1 1/2" Stainless Steel Manifold, Supply & Return Body, G 1" Branch Union, 3" O.C.

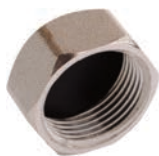
| PART# | TYPE | UNIT |
|---------|-------------|------|
| 3260300 | 3 Branches | Each |
| 3260400 | 4 Branches | Each |
| 3260500 | 5 Branches | Each |
| 3260600 | 6 Branches | Each |
| 3260700 | 7 Branches | Each |
| 3260800 | 8 Branches | Each |
| 3260900 | 9 Branches | Each |
| 3261000 | 10 Branches | Each |
| 3261100 | 11 Branches | Each |
| 3261200 | 12 Branches | Each |
| 3261300 | 13 Branches | Each |



MANIFOLD FITTINGS

MANIFOLD OPTIONS

MrPEX[®] Manifold Options offer transitions, end caps and accessories for MrPEX[®] manifolds. Some of the 1 1/4" manifolds and transitions feature a 1" BSP metric straight thread using an o-ring seal. Do Not Use teflon tape or thread sealing compounds for these.



Loop End Cap

| PART# | TYPE | UNIT |
|---------|-------|----------|
| 3610003 | EK 20 | Bag of 2 |
| 3610004 | EK 25 | Bag of 2 |



Pressure Test Kit for 1" NPT Connections

| PART# | TYPE | UNIT |
|---------|--------|------|
| 3700183 | 1" NPT | Each |



Pressure Test Kit for 1 1/2" Brass Manifolds

| PART# | TYPE | UNIT |
|---------|---------------------|------|
| 3700184 | 1 1/2" & 1 1/4" NPT | Each |



Pressure Test Kit for 1 1/2" Stainless Steel Manifolds

| PART# | TYPE | UNIT |
|---------|-------------------------|------|
| 3700185 | 1 1/2" FPT with End Cap | Each |

PEX FITTINGS

PEX FITTINGS & EUROCONUS (EK) FITTINGS

MrPEX® Compression Fitting Assemblies for connection of MrPEX® Barrier PEX tubing to MrPEX® Manifolds or transition fittings with EK (Eurokonus) connection. Fittings consists of a nut, insert and compression ring made of nickel plated brass. Insert features o-ring and EK (Eurokonus) seat.

PEX Fitting Assembly (Nut Ring & Insert) for EK

| PART# | TYPE | UNIT |
|---------|------------------------------|-----------|
| 4310516 | 5/16" PEX to EK 20 – 2 Piece | Bag of 10 |
| 4310375 | 3/8" PEX to EK 20 – 2 Piece | Bag of 10 |
| 4310500 | 1/2" PEX to EK 20 – 2 Piece | Bag of 10 |
| 4310625 | 5/8" PEX to EK 20 – 2 Piece | Bag of 10 |
| 4310750 | 3/4" PEX to EK 20 – 4 Piece | Bag of 10 |
| 4320625 | 5/8" PEX to EK 25 – 3 Piece | Bag of 10 |
| 4320750 | 3/4" PEX to EK 25 – 3 Piece | Bag of 10 |



PEX Expansion Fitting Assembly, F1960

| PART# | TYPE | UNIT |
|---------|------------------|-----------|
| 4350500 | 1/2 PEX to EK 20 | Bag of 10 |
| 4350625 | 5/8 PEX to EK 20 | Bag of 10 |
| 4350750 | 3/4 PEX to EK 20 | Bag of 10 |
| 4360625 | 5/8 PEX to EK 25 | Bag of 10 |
| 4360750 | 3/4 PEX to EK 25 | Bag of 10 |
| 4361000 | 1 PEX to EK25 | Bag of 10 |



PEX Press Fitting Assembly, F1807

| PART# | TYPE | UNIT |
|---------|------------------|-----------|
| 4380500 | 1/2" PEX to EK20 | Bag of 10 |
| 4380750 | 3/4" PEX to EK20 | Bag of 10 |
| 4390750 | 3/4" PEX to EK25 | Bag of 10 |



Copper Sweat Transition

| PART# | TYPE | UNIT |
|---------|-------------------------|-----------|
| 4342050 | EK 20 to 1/2" & 3/4" CU | Bag of 10 |
| 4342575 | EK 25 to 3/4" & 1" CU | Bag of 10 |





NPT Transition

| PART# | TYPE | UNIT |
|---------|-------------------|-----------|
| 4372050 | EK 20 to 1/2" NPT | Bag of 10 |
| 4372575 | EK 25 to 3/4" NPT | Bag of 10 |
| 4372510 | EK 25 to 1" NPT | Bag of 2 |



Coupling Nipple

| PART# | TYPE | UNIT |
|---------|----------------|-----------|
| 4352020 | EK 20 to EK 20 | Bag of 10 |
| 4352525 | EK 25 to EK 25 | Bag of 10 |

PEX-AL-PEX FITTINGS

PRESS FITTINGS FOR PEX-AL-PEX TUBING

MrPEX® Press Fittings for use with MrPEX® ASTM F1281-2005 PEX-AL-PEX tubing in radiant applications. The body is made from DZR brass, double o-rings, and a stainless steel press sleeve. An accurately installed press fitting offers a fast, reliable, and permanent connection.

NOTE: Must use reamer on any PEX-AL-PEX fittings

Press Fitting Assemblies

| PART# | TYPE | UNIT |
|---------|-------------------|-----------|
| 2110500 | 1/2" PAP to EK 20 | Bag of 10 |
| 2110625 | 5/8" PAP to EK 20 | Bag of 10 |



Press Couplings DZR

| PART# | TYPE | UNIT |
|---------|----------------------|-----------|
| 2315050 | 1/2" PAP to 1/2" PAP | Bag of 10 |
| 2216363 | 5/8" PAP to 5/8" PAP | Bag of 10 |
| 2317575 | 3/4" PAP to 3/4" PAP | Bag of 10 |
| 2311010 | 1" PAP to 1" PAP | Bag of 5 |



Press Transition to NPT DZR

| PART# | TYPE | UNIT |
|---------|----------------------|-----------|
| 2226375 | 5/8" PAP to 3/4" NPT | Bag of 10 |
| 2325050 | 1/2" PAP to 1/2" NPT | Bag of 10 |
| 2325075 | 1/2" PAP to 3/4" NPT | Bag of 10 |
| 2327575 | 3/4" PAP to 3/4" NPT | Bag of 10 |
| 2321010 | 1" PAP to 1" NPT | Bag of 5 |



Press Sweat Adapter DZR

| PART# | TYPE | UNIT |
|---------|---------------------|-----------|
| 2355050 | 1/2" PAP to 1/2" CU | Bag of 10 |
| 2355075 | 1/2" PAP to 3/4" CU | Bag of 10 |
| 2357575 | 3/4" PAP to 3/4" CU | Bag of 10 |



Press Transition to FIP DZR

| PART# | TYPE | UNIT |
|---------|----------------------|-----------|
| 2335050 | 1/2" PAP to 1/2" FIP | Bag of 10 |
| 2337575 | 3/4" PAP to 3/4" FIP | Bag of 10 |





Press Elbow DZR

| PART# | TYPE | UNIT |
|---------|----------------------|-----------|
| 2365050 | 1/2" PAP to 1/2" PAP | Bag of 10 |
| 2367575 | 3/4" PAP to 3/4" PAP | Bag of 10 |
| 2361010 | 1" PAP to 1" PAP | Bag of 5 |

Press Elbow to Sweat Adapter DZR

| PART# | TYPE | UNIT |
|---------|---------------------|-----------|
| 2380057 | 1/2" PAP to 3/4" CU | Bag of 10 |
| 2380077 | 3/4" PAP to 3/4" CU | Bag of 10 |

Press Tee DZR

| PART# | TYPE | UNIT |
|---------|--------------------------------|-----------|
| 2397577 | 3/4" PAP x 3/4" PAP x 3/4" PAP | Bag of 10 |
| 2391011 | 1" PAP x 1" PAP x 1" PAP | Bag of 5 |



COMPRESSION FITTINGS FOR PEX-AL-PEX TUBING

MrPEX® Compression Fitting Assemblies for connection of MrPEX® PEX-AL-PEX tubing to MrPEX® Manifolds or transition fittings with EK (Eurokonus) connection. Fittings consist of a nut, insert and compression ring made of brass. Insert features double o-ring and EK (Eurokonus) seat.

PEX-AL-PEX Fitting Assemblies

| PART# | TYPE | UNIT |
|---------|-------------------|-----------|
| 2410500 | 1/2" PAP to EK 20 | Bag of 10 |
| 2410625 | 5/8" PAP to EK 20 | Bag of 10 |
| 2430750 | 3/4" PAP to EK 25 | Bag of 10 |



PEX-AL-PEX Repair Coupling w/ Fitting Assembly

| PART# | TYPE | UNIT |
|---------|------------------|-----------|
| 2421010 | 1" PAP to 1" PAP | Bag of 10 |



PEX-AL-PEX Transition w/ Fitting Assembly

| PART# | TYPE | UNIT |
|---------|----------------------|-----------|
| 2445050 | 1/2" PAP to 1/2" NPT | Bag of 10 |
| 2446375 | 5/8" PAP to 3/4" NPT | Bag of 10 |
| 2447575 | 3/4" PAP to 3/4" NPT | Bag of 10 |
| 2441010 | 1" PAP to 1" NPT | Bag of 10 |
| 2456375 | 5/8" PAP to 3/4" FIP | Bag of 10 |
| 2457575 | 3/4" PAP to 3/4" FIP | Bag of 10 |
| 2461013 | 1" PAP to 1 1/4" CU | Bag of 10 |



PEX FITTINGS

F2159 PPSU PEX PRESS FITTINGS

MrPEX® plastic fittings are made from a blend of engineered high performance PolyPhenylSulfone (PPSU) resin to achieve a long-term durable product. These PPSU fittings are durable, light weight, corrosion free, and resistant to chlorine and other substances that may be present in today's potable water supply. The Sulfone resin has been used and refined over the past 20 years and has proven a very reliable replacement for brass and copper fittings. MrPEX® fittings are listed to ASTM F2159. MrPEX® Stainless Steel Press Sleeves and PEX Press tools are required and purchased separately.



PEX Press Sleeves – Stainless Steel for F2159 & F1807

| PART# | TYPE | UNIT |
|---------|------------|------------|
| 4000500 | 1/2" PEX | Bag of 100 |
| 4000750 | 3/4" PEX | Bag of 50 |
| 4001000 | 1" PEX | Bag of 50 |
| 4001250 | 1-1/4" PEX | Bag of 10 |
| 4001500 | 1-1/2" PEX | Bag of 10 |
| 4002000 | 2" PEX | Bag of 10 |



F2159 PPSU – Couplings

| PART# | TYPE | UNIT |
|---------|---------------------|-----------|
| 4015050 | 1/2" PEX x 1/2" PEX | Bag of 25 |
| 4017575 | 3/4" PEX x 3/4" PEX | Bag of 25 |
| 4011010 | 1" PEX x 1" PEX | Bag of 10 |



F2159 PPSU – Threaded Adapter, Male

| PART# | TYPE | UNIT |
|---------|---------------------|-----------|
| 4025050 | 1/2" PEX x 1/2" NPT | Bag of 25 |
| 4025075 | 1/2" PEX x 3/4" NPT | Bag of 25 |
| 4027575 | 3/4" PEX x 3/4" NPT | Bag of 25 |



F2159 PPSU – Elbow

| PART# | TYPE | UNIT |
|---------|---------------------|-----------|
| 4065050 | 1/2" PEX x 1/2" PEX | Bag of 25 |
| 4067575 | 3/4" PEX x 3/4" PEX | Bag of 25 |
| 4061010 | 1" PEX x 1" PEX | Bag of 10 |



1st, 2nd, & 3rd
Measurements

F2159 PPSU – Tee

| PART# | TYPE | UNIT |
|---------|--------------------------------|-----------|
| 4097571 | 3/4" PEX x 3/4" PEX x 1" PEX | Bag of 10 |
| 4097577 | 3/4" PEX x 3/4" PEX x 3/4" PEX | Bag of 25 |
| 4091011 | 1" PEX x 1" PEX x 1" PEX | Bag of 10 |
| 4091017 | 1" PEX x 1" PEX x 3/4" PEX | Bag of 10 |
| 4091071 | 1" PEX x 3/4" PEX x 1" PEX | Bag of 10 |
| 4091077 | 1" PEX x 3/4" PEX x 3/4" PEX | Bag of 10 |

F1807 PEX PRESS FITTINGS - LF BRASS

MrPEX® Lead Free Brass fittings comply with NSF 61, which allows the product to contain no more than 0.25% lead. These fittings meet F1807. MrPEX Stainless Steel Press Sleeves and PEX Press tools are required and purchased separately.

F1807 LF Brass - Coupling

| PART# | TYPE | UNIT |
|---------|-------------------------|-----------|
| 4115050 | 1/2" PEX x 1/2" PEX | Bag of 25 |
| 4117575 | 3/4" PEX x 3/4" PEX | Bag of 25 |
| 4111010 | 1" PEX x 1" PEX | Bag of 10 |
| 4111310 | 1-1/4" PEX x 1" PEX | Bag of 5 |
| 4111313 | 1-1/4" PEX x 1-1/4" PEX | Bag of 5 |
| 4111510 | 1-1/2" PEX x 1" PEX | Bag of 5 |
| 4111513 | 1-1/2" PEX x 1-1/4" PEX | Bag of 5 |
| 4111515 | 1-1/2" PEX x 1-1/2" PEX | Bag of 5 |
| 4112013 | 2" PEX x 1-1/4" PEX | Bag of 5 |
| 4112015 | 2" PEX x 1-1/2" PEX | Bag of 5 |
| 4112020 | 2" PEX x 2" PEX | Bag of 5 |



F1807 LF Brass - Threaded Adapter, Male

| PART# | TYPE | UNIT |
|---------|-------------------------|-----------|
| 4125075 | 1/2" PEX x 3/4" NPT | Bag of 25 |
| 4127575 | 3/4" PEX x 3/4" NPT | Bag of 25 |
| 4127510 | 3/4" PEX x 1" NPT | Bag of 10 |
| 4121010 | 1" PEX x 1" NPT | Bag of 10 |
| 4121075 | 1" PEX x 3/4" NPT | Bag of 10 |
| 4121313 | 1-1/4" PEX x 1-1/4" NPT | Bag of 5 |
| 4121515 | 1-1/2" PEX x 1-1/2" NPT | Bag of 5 |
| 4122020 | 2" PEX x 2" NPT | Bag of 5 |



F1807 LF Brass - Sweat Adapter, Male

| PART# | TYPE | UNIT |
|---------|-------------------------|-----------|
| 4131313 | 1-1/4" PEX x 1-1/4" NPT | Bag of 5 |
| 4131515 | 1-1/2" PEX x 1-1/2" NPT | Bag of 5 |
| 4132020 | 2" PEX x 2" NPT | Bag of 5 |
| 4145050 | 1/2" PEX x 1/2" CU | Bag of 25 |
| 4147575 | 3/4" PEX x 3/4" CU | Bag of 25 |
| 4141010 | 1" PEX x 1" CU | Bag of 10 |





F1807 LF Brass - Sweat Adapter, Female

| PART# | TYPE | UNIT |
|---------|------------------------|-----------|
| 4155050 | 1/2" PEX x 1/2" CU | Bag of 25 |
| 4155075 | 1/2" PEX x 3/4" CU | Bag of 25 |
| 4157510 | 3/4" PEX x 1" CU | Bag of 10 |
| 4157575 | 3/4" PEX x 3/4" CU | Bag of 25 |
| 4151010 | 1" PEX x 1" CU | Bag of 10 |
| 4151313 | 1-1/4" PEX x 1-1/4" CU | Bag of 5 |
| 4151515 | 1-1/2" PEX x 1-1/2" CU | Bag of 5 |
| 4152020 | 2" PEX x 2" CU | Bag of 5 |



F1807 LF Brass - Sweat Elbow, Female

| PART# | TYPE | UNIT |
|---------|--------------------|-----------|
| 4180155 | 1/2" PEX x 1/2" CU | Bag of 25 |
| 4180157 | 1/2" PEX x 3/4" CU | Bag of 25 |
| 4180177 | 3/4" PEX x 3/4" CU | Bag of 25 |
| 4180111 | 1" PEX x 1" CU | Bag of 10 |



F1960 PPSU PEX EXPANSION FITTINGS

F1960 PEX Ring

| PART# | TYPE | UNIT |
|---------|------------|-----------|
| 4600500 | 1/2" PEX | Bag of 50 |
| 4600625 | 5/8" PEX | Bag of 10 |
| 4600750 | 3/4" PEX | Bag of 25 |
| 4601000 | 1" PEX | Bag of 10 |
| 4601250 | 1 1/4" PEX | Bag of 10 |
| 4601500 | 1 1/2" PEX | Bag of 10 |
| 4602000 | 2" PEX | Bag of 10 |



F1960 PPSU - Coupling

| PART# | TYPE | UNIT |
|---------|-------------------------|-----------|
| 4615050 | 1/2" PEX x 1/2" PEX | Bag of 25 |
| 4617575 | 3/4" PEX x 3/4" PEX | Bag of 25 |
| 4611010 | 1" PEX x 1" PEX | Bag of 10 |
| 4611313 | 1 1/4" PEX x 1 1/4" PEX | Bag of 10 |
| 4611515 | 1 1/2" PEX x 1 1/2" PEX | Bag of 1 |
| 4611575 | 1 1/2" PEX x 3/4" PEX | Bag of 1 |
| 4612020 | 2" PEX x 2" PEX | Bag of 1 |



F1960 PPSU - Elbow

| PART# | TYPE | UNIT |
|---------|-------------------------|-----------|
| 4665050 | 1/2" PEX x 1/2" PEX | Bag of 25 |
| 4667575 | 3/4" PEX x 3/4" PEX | Bag of 10 |
| 4661010 | 1" PEX x 1" PEX | Bag of 10 |
| 4661313 | 1 1/4" PEX x 1 1/4" PEX | Bag of 1 |
| 4661515 | 1 1/2" PEX x 1 1/2" PEX | Bag of 1 |
| 4662020 | 2" PEX x 2" PEX | Bag of 1 |





F1960 PPSU - Tee

| PART# | TYPE | UNIT |
|---------|--------------------------------------|-----------|
| 4697577 | 3/4" PEX x 3/4" PEX x 3/4" PEX | Bag of 10 |
| 4691011 | 1" PEX x 1" PEX x 1" PEX | Bag of 10 |
| 4691017 | 1" PEX x 1 PEX x 3/4 PEX | Bag of 10 |
| 4691071 | 1" PEX x 3/4" PEX x 1" PEX | Bag of 10 |
| 4691077 | 1" PEX x 3/4" PEX x 3/4" PEX | Bag of 10 |
| 4691311 | 1 1/4" PEX x 1" PEX x 1" PEX | Bag of 10 |
| 4691317 | 1 1/4" PEX x 1" PEX x 3/4" PEX | Bag of 10 |
| 4691331 | 1 1/4" PEX x 1 1/4" PEX x 1" PEX | Bag of 10 |
| 4691333 | 1 1/4" PEX x 1 1/4" PEX x 1 1/4" PEX | Bag of 10 |
| 4691337 | 1 1/4" PEX x 1 1/4" PEX x 3/4" PEX | Bag of 10 |
| 4691511 | 1 1/2" PEX x 1" PEX x 1" PEX | Bag of 1 |
| 4691517 | 1 1/2" PEX x 1" PEX x 3/4" PEX | Bag of 1 |
| 4691518 | 1 1/2" PEX x 1" PEX x 1 1/2" PEX | Bag of 1 |
| 4691531 | 1 1/2" PEX x 1 1/4" PEX x 1" PEX | Bag of 1 |
| 4691533 | 1 1/2" PEX x 1 1/4" PEX x 1 1/4" PEX | Bag of 1 |
| 4691537 | 1 1/2" PEX x 1 1/4" PEX x 3/4" PEX | Bag of 1 |
| 4691581 | 1 1/2" PEX x 1 1/2" PEX x 1" PEX | Bag of 1 |
| 4691583 | 1 1/2" PEX x 1 1/2" PEX x 1 1/4" PEX | Bag of 1 |
| 4691587 | 1 1/2" PEX x 1 1/2" PEX x 3/4" PEX | Bag of 1 |
| 4691588 | 1 1/2" PEX x 1 1/2" PEX x 1 1/2" PEX | Bag of 1 |
| 4692021 | 2" PEX x 2" PEX x 1" PEX | Bag of 1 |
| 4692022 | 2" PEX x 2" PEX x 2" PEX | Bag of 1 |
| 4692023 | 2" PEX x 2" PEX x 1 1/4" PEX | Bag of 1 |
| 4692028 | 2" PEX x 1 1/2" PEX x 1 1/4" PEX | Bag of 1 |
| 4692083 | 2" PEX x 2" PEX x 1 1/2" PEX | Bag of 1 |
| 4692088 | 2" PEX x 1 1/2" PEX x 1 1/2" PEX | Bag of 1 |

////////////////////////////////////

F1960 PEX EXPANSION FITTINGS - LF BRASS

MrPEX® Lead Free Brass fittings comply with NSF 61, which allows the product to contain no more than 0.25% lead. These fittings meet F1960.

F1960 LF Brass - Coupling

| PART# | TYPE | UNIT |
|---------|---------------------|-----------|
| 4815050 | 1/2" PEX x 1/2" PEX | Bag of 50 |
| 4816363 | 5/8" PEX x 5/8" PEX | Bag of 10 |
| 4817575 | 3/4" PEX x 3/4" PEX | Bag of 25 |
| 4811010 | 1" PEX x 1" PEX | Bag of 25 |



F1960 LF Brass - Threaded Adapter, Male

| PART# | TYPE | UNIT |
|---------|-------------------------|-----------|
| 4825050 | 1/2" PEX x 1/2" NPT | Bag of 25 |
| 4825075 | 1/2" PEX x 3/4" NPT | Bag of 25 |
| 4826375 | 5/8" PEX x 3/4" NPT | Bag of 10 |
| 4827510 | 3/4" PEX x 1" NPT | Bag of 25 |
| 4827575 | 3/4" PEX x 3/4" NPT | Bag of 25 |
| 4821010 | 1" PEX x 1" NPT | Bag of 25 |
| 4821313 | 1-1/4" PEX x 1-1/4" NPT | Bag of 10 |
| 4821515 | 1-1/2" PEX x 1-1/2" NPT | Bag of 10 |
| 4822020 | 2" PEX x 2" NPT | Bag of 5 |



F1960 LF Brass - Sweat Adapter, Male

| PART# | TYPE | UNIT |
|---------|------------------------|-----------|
| 4845050 | 1/2" PEX x 1/2" CU | Bag of 50 |
| 4845075 | 1/2" PEX x 3/4" CU | Bag of 25 |
| 4847575 | 3/4" PEX x 3/4" CU | Bag of 25 |
| 4841010 | 1" PEX x 1" CU | Bag of 25 |
| 4841313 | 1-1/4" PEX x 1-1/4" CU | Bag of 15 |
| 4841515 | 1-1/2" PEX x 1-1/2" CU | Bag of 10 |
| 4842020 | 2" PEX x 2" CU | Bag of 5 |





F1960 LF Brass - Sweat Adapter, Female

| PART# | TYPE | UNIT |
|---------|------------------------|-----------|
| 4855050 | 1/2" PEX x 1/2" CU | Bag of 50 |
| 4855075 | 1/2" PEX x 3/4" CU | Bag of 25 |
| 4857575 | 3/4" PEX x 3/4" CU | Bag of 25 |
| 4851010 | 1" PEX x 1" CU | Bag of 25 |
| 4851313 | 1-1/4" PEX x 1-1/4" CU | Bag of 10 |
| 4851515 | 1-1/2" PEX x 1-1/2" CU | Bag of 5 |
| 4852020 | 2" PEX x 2" CU | Bag of 5 |



F1960 LF Brass - Elbow

| PART# | TYPE | UNIT |
|---------|---------------------|-----------|
| 4865050 | 1/2" PEX x 1/2" PEX | Bag of 50 |
| 4867575 | 3/4" PEX x 3/4" PEX | Bag of 25 |
| 4861010 | 1" PEX x 1" PEX | Bag of 25 |



F1960 LF Brass - Tee

| PART# | TYPE | UNIT |
|---------|--------------------------------|-----------|
| 4897571 | 3/4" PEX x 3/4" PEX x 1" PEX | Bag of 25 |
| 4897577 | 3/4" PEX x 3/4" PEX x 3/4" PEX | Bag of 25 |
| 4891011 | 1" PEX x 1" PEX x 1" PEX | Bag of 10 |
| 4891017 | 1" PEX x 1" PEX x 3/4" PEX | Bag of 25 |
| 4891071 | 1" PEX x 3/4" PEX x 1" PEX | Bag of 25 |
| 4891077 | 1" PEX x 3/4" PEX x 3/4" PEX | Bag of 25 |

////////////////////////////////////

CONTROLS

ZONING CONTROLS

MrPEX® Zoning Controls offer low voltage electronic zone control featuring thermostats, zone box, valve actuators, zone valves.

Digital Room Thermostat

| PART# | TYPE | UNIT |
|---------|---|------|
| 5110521 | Radiant Thermostat Air/ Floor - Heat/ Heat or Heat/Cool w/ Floor Sensor | Each |
| 5110079 | Spare Part Floor Sensor for #5110519 & 5110521, 10k 15 ft. | Each |
| 5110012 | Wall Plate for 5110519 & 5110521 - Spare Part | Each |
| 5310898 | HVAC Thermostat-Optima S | Each |



Radiant Programmable Thermostat 24 VAC

| PART# | TYPE | UNIT |
|---------|--------|------|
| 5115024 | 3-Wire | Each |



Floor-Slab Temperature Sensor

| PART# | TYPE | UNIT |
|---------|------|------|
| 5113025 | 10k | Each |



Valve Actuator for Valved Manifolds w/out Adapter

| PART# | TYPE | UNIT |
|---------|----------------------|------|
| 5120700 | 4-Wire w/ End Switch | Each |
| 5120701 | 2-Wire | Each |

NOTE: Use adapter ring VA 10 for 325 and 332 series manifolds. Use adapter ring VA 90 for 381 series manifolds. Both adapters are provided with the actuators.



Auto Balancing Actuator 24 VAC

| PART# | TYPE | UNIT |
|---------|--------|------|
| 5120702 | 4-Wire | Each |

This performs as both an on/off and balancing. The wires fit 3/8" PEX through 5/8" PEX. This balances the circuit at a 13° Delta T. Power consumption is less than 0.5W.





Zone Valve Including Actuator w/ End Switch

| PART# | TYPE | UNIT |
|---------|----------------------------------|------|
| 5120711 | 1/2" CU Union x CU Union, Cv 2.1 | Each |
| 5120712 | 3/4" CU Union x CU Union, Cv 3.2 | Each |



Zone Valve Including Actuator w/ End Switch

| PART# | TYPE | UNIT |
|---------|--------------------------------------|------|
| 5120721 | 1/2" Female NPT x Male NPT, Cv 2.1 | Each |
| 5120722 | 3/4" Female NPT x Male NPT, Cv 3.2 | Each |
| 5120723 | 1" Female NPT x Male NPT, Cv 4.0 | Each |
| 5120724 | 1 1/4" Female NPT x Male NPT, Cv 4.7 | Each |

////////////////////////////////////



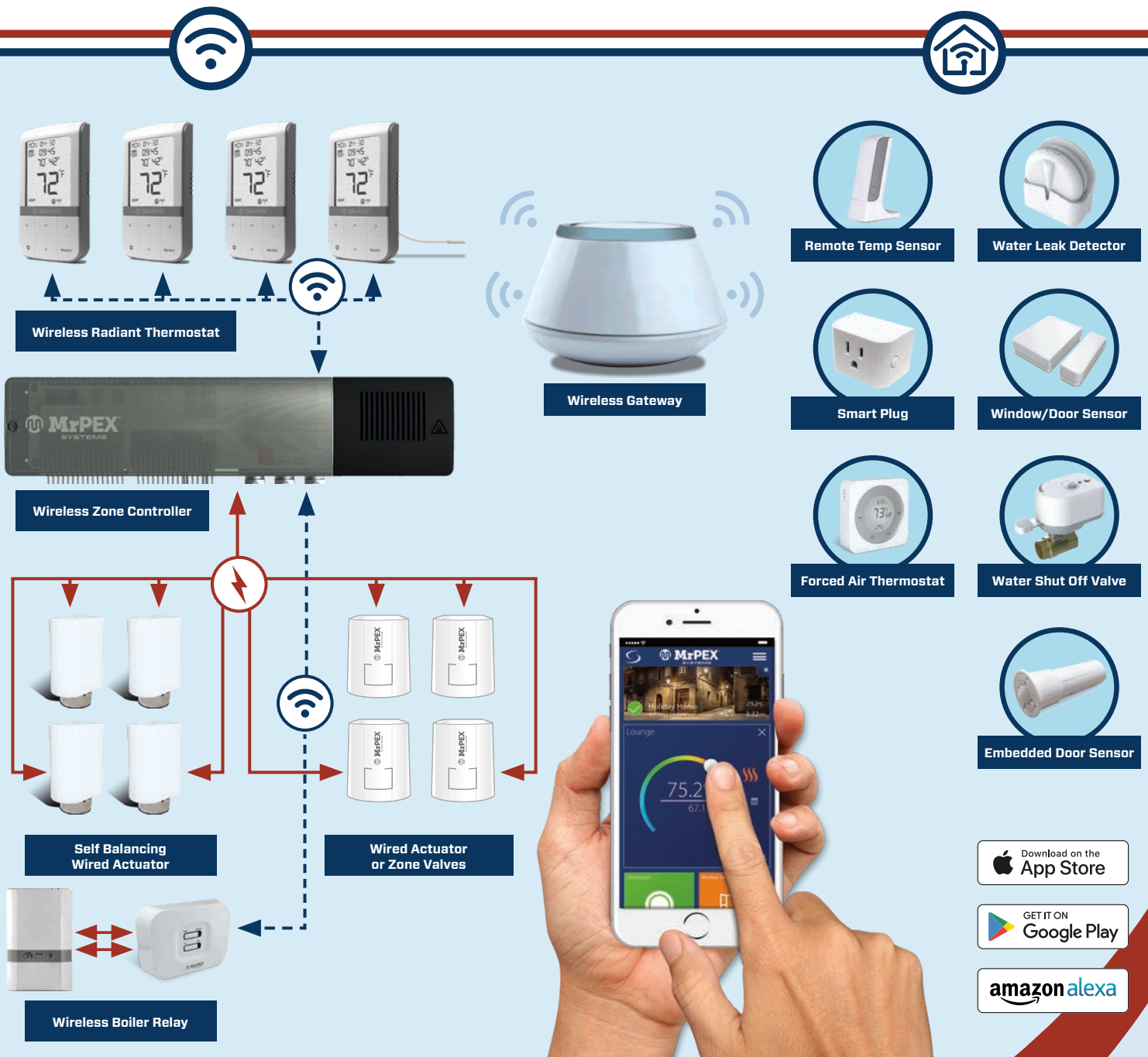
Zone Controller

| PART# | TYPE | UNIT |
|---------|--|------|
| 5130704 | Simple Zone Controller, 24V, Up to 4 Zones | Each |

////////////////////////////////////



Complete Wireless Hydronic & Smart Home Solutions



WIRELESS ZONE CONTROLS



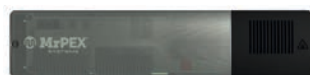
Wireless Controls

| PART# | TYPE | UNIT |
|---------|-------------------------------------|------|
| 5310888 | Universal Gateway + SA Plug - White | Each |
| 5310002 | External Antenna | Each |
| 5310004 | Repeater + USA USB Plug | Each |



Wireless Thermostat

| PART# | TYPE | UNIT |
|---------|--|------|
| 5310010 | Wireless Radiant Programmable Thermostat - White | Each |
| 5113025 | Floor-Slab Temperature Sensor - 10k | Each |



Wireless Zone Controller

| PART# | TYPE | UNIT |
|---------|-----------------|------|
| 5310208 | 8 Zone - 24 VAC | Each |

*Need Part# 5310888 to make network



Wireless Boiler Relay

| PART# | TYPE | UNIT |
|---------|--------|------|
| 5310001 | 24 VAC | Each |



Wireless Smart Relay

| PART# | TYPE | UNIT |
|---------|--------|------|
| 5310824 | 24 VAC | Each |



Wireless Pump Relay

| PART# | TYPE | UNIT |
|---------|--------|------|
| 5310101 | 1 Zone | Each |
| 5310104 | 4 Zone | Each |
| 5310106 | 6 Zone | Each |

Wireless Radiator Valve

| PART# | TYPE | UNIT |
|---------|---------------------------|------|
| 5310700 | Battery Radiator Actuator | Each |



Wireless Smart Devices

| PART# | TYPE | UNIT |
|---------|-------------------------------|------|
| 5310881 | Embedded Door Sensor | Each |
| 5310882 | Door Window Sensor | Each |
| 5310912 | Slim Door/Window Sensor White | Each |
| 5310885 | Smart Plug US - Light Gray | Each |
| 5310909 | Wireless Temperature Sensor | Each |



Wireless Leak Detection Devices

| PART# | TYPE | UNIT |
|---------|--|------|
| 5310901 | Wireless Water Leak Sensor | Each |
| 5310904 | Wireless Inline Shutoff Valve - 3/4" FIP | Each |
| 5310905 | Wireless Inline Shutoff Valve - 1" FIP | Each |
| 5310900 | Wireless Valve Motor for - 3/4" - 1 1/4" | Each |



COMING
SOON

COMING
SOON

SNOWMELT CONTROLS

MrPEX® snowmelt controls offer low voltage snowmelt control, Snow/Ice Detector, and sensors.



| PART# | TYPE | UNIT |
|---------|--------------------------|------|
| 5140090 | Ground Snow Sensor - 090 | Each |
| 5140091 | Socket - 091 | Each |
| 5140095 | Aerial Snow Sensor - 095 | Each |
| 5140654 | Snow Melt Control - 654 | Each |



INTEGRATED DYNAMIC CONTROL



The Ultimate In Indoor Comfort, Snowmelt & Energy Control!

IDC is an intelligent control system which delivers optimized comfort and maximized efficiency by coordinating all the mechanical systems of your building including HVAC, Indoor Air Quality, and Hydronic systems in one control. IDC is the optimal control system for incorporating radiant floor heating and cooling systems, with renewable energy sources such as solar, heat pumps, or others. IDC also offers complete integrated multi-zone snowmelt control. The IDC System allows remote access from anywhere in the world for monitoring, managing, and controlling via the web using a Smartphone or tablet. IDC gives you the opportunity to do as much or as little as you demand, from a small house to large commercial building, and brings intelligent control technologies, previously exclusive to large-scale commercial buildings, into the residential and mid-range commercial market.



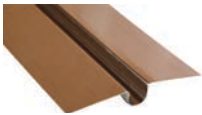
The system brain consists of programmable I/O blocks that are BACnet and Modbus native, and a Linux PC that provides high speed, secure connection to any device. Wired to the cabinet are all the sensors, equipment, and control devices. The system comes standard with a 10" touch screen control interface that can be mounted in the living area. If individual zone control is desired, 5" touch screens provide the user with complete control. The IDC system is custom designed for each application, therefore we provide quotations on a project-by-project basis.

Please contact MrPEX® Systems or your local rep for pricing.

TOOLS & ACCESSORIES

HEAT TRANSFER ACCESSORIES

MrPEX[®] Accessories feature extruded aluminum heat transfer plates and omega style aluminum heat transfer plates for even heat distribution in suspended applications. RetroPanel is used for retrofit applications on top of existing concrete or sub-floor.



Omega Style Aluminum Heat Transfer Plates

| PART# | TYPE | UNIT |
|---------|--------------------------|------------|
| 6110702 | 18" x 5" for 1/2" Tubing | Box of 100 |



DuoTrack Extruded Aluminum Heat Transfer Plates, Pre-drilled

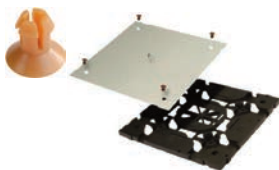
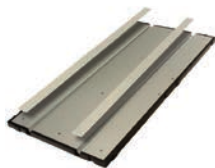
| PART# | TYPE | UNIT |
|---------|----------------------------------|-----------|
| 6110733 | 48" x 3.75" for 3/8" or 1/2" PEX | Box of 20 |

NOTE: Quick estimate for 8" O.C., ((square footage x 0.9) x 1.5) / 4 = Qty of DuoTrack Plates.



Extruded Aluminum Heat Transfer Plate for 3/8" PEX

| PART# | TYPE | UNIT |
|---------|---------------------------|-----------|
| 6110731 | 48" x 3 3/4" for 3/8" PEX | Box of 20 |



RetroPanel Heat Transfer System, 8" On Center

| PART# | TYPE | UNIT |
|---------|---|-----------|
| 6114001 | 15 3/4" x 31 1/2" Straight for 1/2" PEX | Box of 10 |
| 6114002 | 15 3/4" x 15 3/4" Return for 1/2" PEX | Box of 20 |

NOTE:

Material estimate; Floor area (sqft) x 0.9 = net floor area.

Straight Panel = Net floor area x 0.70 / 3.44 = Qty.

Return Panel = Net floor area x 0.30 / 1.72 = Qty.

HeatPly—Radiant Wood Track for 3/8" PEX Tubing

| PART# | TYPE | UNIT |
|---------|---|-----------|
| 6115019 | Run Panel - 6" O.C. - 12" x 48" | Box of 10 |
| 6115029 | Turn-Around Panel - 6" O.C. - 12" x 48" | Box of 10 |
| 6115039 | Manifold Panel - 6" O.C. - 12" x 48" | Box of 10 |



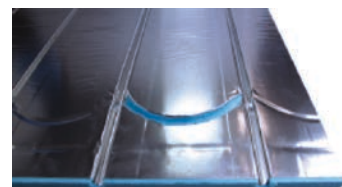
Material estimate:

Straight Panel = Square foot x 2 x 0.75 / 8 = Single Qty panels

Return Panel = Square foot x 2 x 0.25 / 7 = Single Qty panels

Radiant Foam Panel for 3/8" PEX - 6" O.C

| PART# | TYPE | UNIT |
|---------|----------------|-----------|
| 6115004 | 2' x 4' x 5/8" | Box of 14 |



Radiant Foam Panel for 1/2" PEX - 8" O.C

| PART# | TYPE | UNIT |
|---------|----------------|-----------|
| 6115005 | 2' x 4' x 3/4" | Box of 14 |

Material estimate:

Net Square Foot/7.8=number of panels

MANIFOLD CABINETS



Manifold Cabinets (Shipped Un-Assembled)

| PART# | TYPE | UNIT |
|---------|--|------|
| 6212421 | 20 4/5" W x 31 1/2" H x 5 1/10" D for Surface Mounting | Each |
| 6212431 | 26 4/5" W x 31 1/2" H x 5 1/10" D for Surface Mounting | Each |
| 6212451 | 40 1/2" W x 31 1/2" H x 5 1/10" D for Surface Mounting | Each |
| 6213421 | 20 4/5" W x 27 1/5–31 1/10" H x 5 1/10" D for Recessed Mounting | Each |
| 6213431 | 26 4/5" W x 27 1/5–31 1/10" H x 5 1/10" D for Recessed Mounting | Each |
| 6213451 | 40 1/2" W x 27 1/5–31 1/10" H x 4 1/4" D for Recessed Mounting | Each |

Surface Manifold Cabinet Selection Chart (Shipped Un-Assembled)

| PART# | 1 1/4" STAINLESS NO BALL VALVE | 1 1/4" STAINLESS W/ BALL VALVE | COMPOSITE | 1 1/2" STAINLESS W/O BALL VALVES | 1 1/2" BRASS |
|---------|-----------------------------------|-----------------------------------|----------------|-------------------------------------|----------------|
| 6212421 | Up to 7 Loops | Up to 6 Loops | Up to 6 Loops | Up to 4 Loops | Up to 5 Loops |
| 6212431 | Up to 11 Loops | Up to 10 Loops | Up to 10 Loops | Up to 8 Loops | Up to 8 Loops |
| 6212451 | Up to 12 Loops | Up to 12 Loops | Up to 12 Loops | Up to 13 Loops | Up to 12 Loops |

Recessed Manifold Cabinet Selection Chart (Shipped Un-Assembled)

| PART# | 1 1/4" STAINLESS NO BALL VALVE | 1 1/4" STAINLESS W/ BALL VALVE | COMPOSITE | 1 1/2" STAINLESS | 1 1/2" BRASS |
|---------|-----------------------------------|-----------------------------------|----------------|------------------|----------------|
| 6213421 | Up to 7 Loops | Up to 6 Loops | Up to 6 Loops | Up to 4 Loops | Up to 5 Loops |
| 6213431 | Up to 11 Loops | Up to 10 Loops | Up to 10 Loops | Up to 8 Loops | Up to 8 Loops |
| 6213451 | Up to 12 Loops | Up to 12 Loops | Up to 12 Loops | Up to 13 Loops | Up to 12 Loops |

TUBE FASTENERS & ORGANIZERS

MrPEX® Fasteners and associated accessories and tools allow for easy and fast installations of the tubing in slab or suspended applications.

Tacker Tool

| PART# | TYPE | UNIT |
|---------|-------------------|------|
| 7110223 | To Mount #7110224 | Each |

Foam Insulation Board Tacker Staples for 3/8" - 3/4" PEX & 3/8" - 5/8" PAP Tubing

| PART# | TYPE | UNIT |
|---------|------|------------|
| 7110224 | 2" | Box of 300 |



Foam Insulation Board Anchor Clips for 3/8" to 5/8" PEX & PAP Tubing

| PART# | TYPE | UNIT |
|---------|----------------------------|-----------|
| 7110229 | For 3/8" to 5/8" PEX & PAP | Bag of 50 |



Anchor Clip Mounting Tool

| PART# | TYPE | UNIT |
|---------|-------------------------|------|
| 7110232 | For #7110228 & #7110229 | Each |



Plywood Rider Staples

| PART# | TYPE | UNIT |
|---------|----------------------------|------------|
| 7110235 | For 3/8" to 5/8" PEX & PAP | Box of 500 |



Rider Staples Mounting Gun

| PART# | TYPE | UNIT |
|---------|--------------|------|
| 7110236 | For #7110235 | Each |



Quip Clip for Fastening PEX to Wire Mesh

| PART# | TYPE | UNIT |
|---------|---------------------|------------|
| 7120225 | For 1/2" PEX | Bag of 250 |
| 7120226 | For 5/8" & 3/4" PEX | Bag of 250 |



Plastic Bend Supports

| PART# | TYPE | UNIT |
|---------|--------------|-----------|
| 7130211 | For 3/8" PEX | Bag of 10 |
| 7130212 | For 1/2" PEX | Bag of 10 |
| 7130213 | For 5/8" PEX | Bag of 10 |
| 7130214 | For 3/4" PEX | Bag of 10 |
| 7130215 | For 1" PEX | Bag of 10 |

Metal Bend Supports for Suspended Applications

| PART# | TYPE | UNIT |
|---------|--------------|-----------|
| 7140375 | For 3/8" PEX | Bag of 50 |
| 7140500 | For 1/2" PEX | Bag of 50 |
| 7140625 | For 5/8" PEX | Bag of 50 |
| 7140750 | For 3/4" PEX | Bag of 25 |

Plastic Conduit Bend Supports for Concrete Applications

| PART# | TYPE | UNIT |
|---------|--------------------|-----------|
| 7153862 | 3/8" – 5/8" Tubing | Bag of 10 |
| 7156275 | 5/8" – 3/4" Tubing | Bag of 10 |

PEX-Jr Tubing bracket & Organizer

| PART# | TYPE | UNIT |
|---------|--------------------|-----------|
| 7163850 | 3/8" - 1/2" Tubing | Bag of 12 |

OctaRail for Mounting PEX

| PART# | TYPE | UNIT |
|---------|--|------------|
| 7223875 | For 3/8", 1/2", 5/8", 3/4" PEX, 3.28 ft. (1 Meter) each | Box of 100 |

NOTE: Each box of 100 will accommodate 600 ft of PEX based on 12" O.C. or 900 ft based on 8" O.C.

Plastic Zip Ties

| PART# | TYPE | UNIT |
|---------|------|-------------|
| 7120008 | 8" | Bag of 1000 |

INSTALLATION TOOLS

MrPEX® Installation Tools features tube handling tools for PEX or PEX-AL-PEX as well as prep and press fitting tools for PEX-AL-PEX.

Compact Adjustable Tubing Uncoiler

| PART# | TYPE | UNIT |
|---------|------------|------|
| 8110720 | Heavy Duty | Each |



Feed Eye w/ Bracket

| PART# | TYPE | UNIT |
|---------|----------------|------|
| 8110722 | For PEX Tubing | Each |



Pipe Cutter

| PART# | TYPE | UNIT |
|---------|--------------------------------------|------|
| 8120878 | For All Sizes Up to 1 1/4" PEX & PAP | Each |



Simple Cutter

| PART# | TYPE | UNIT |
|---------|----------------------|------|
| 8120879 | For 3/8" – 1" Tubing | Each |



Fill/Transfer Pump

| PART# | TYPE | UNIT |
|---------|------------------------|------|
| 8110001 | 1/2" HP, 120V, 120FtHd | Each |



Burring Reamer for PEX-AL-PEX

| PART# | TYPE | UNIT |
|---------|------------------|------|
| 8210872 | 5/8" – 3/4" – 1" | Each |
| 8220875 | 1/2" – 3/4" – 1" | Each |



Manual Press Tool for PEX-AL-PEX

| PART# | TYPE | UNIT |
|---------|--|----------------------|
| 8230895 | Manual Press Tool Kit for PAP w/ Inserts | 1/2", 5/8", 3/4", 1" |
| 8230896 | 1/2" Insert for #8230895 | Each |
| 8230897 | 5/8" Insert for #8230895 | Each |
| 8230898 | 3/4" Insert for #8230895 | Each |
| 8230899 | 1" Insert for #8230895 | Each |





Tools and Accessories

| PART# | TYPE | UNIT |
|---------|---|------|
| 3250011 | Manifold Wrench for EK20 Fittings 27mm and 30mm | Each |



Manual Press Tool for PEX (F1807 & F2159)

| PART# | TYPE | UNIT |
|---------|------------------------------|------|
| 8400500 | 1/2" Stainless Steel Sleeves | Each |
| 8400750 | 3/4" Stainless Steel Sleeves | Each |
| 8401000 | 1" Stainless Steel Sleeves | Each |

Manual Press Tool for PEX (F1807 & F2159), Compact

| PART# | TYPE | UNIT |
|---------|------------------------------|------|
| 8401050 | 1/2" Stainless Steel Sleeves | Each |
| 8401075 | 3/4" Stainless Steel Sleeves | Each |



Manual PEX Expander Tool Kit (F1960)

| PART# | TYPE | UNIT |
|---------|---|------|
| 8500001 | Manual F1960 PEX Expander Tool Kit - 1/2", 3/4", 1" | Each |

PEX Expander Heads (F1960)

| PART# | TYPE | UNIT |
|---------|------|------|
| 8500500 | 1/2" | Each |
| 8500625 | 5/8" | Each |
| 8500750 | 3/4" | Each |
| 8501000 | 1" | Each |

Jaw for ASTM F1807 PEX Press Battery Tools

| PART# | TYPE | UNIT |
|---------|-------------------------|------|
| 8600500 | 1/2" | Each |
| 8600750 | 3/4" | Each |
| 8601000 | 1" | Each |
| 8601250 | 1-1/4" | Each |
| 8601500 | 1-1/2" | Each |
| 8610500 | 1/2 " with Pistol Grip | Each |
| 8610750 | 3/4" with Pistol Grip | Each |
| 8611000 | 1" with Pistol Grip | Each |
| 8611250 | 1-1/4" with Pistol Grip | Each |
| 8611500 | 1-1/2" with Pistol Grip | Each |
| 8612000 | 2" with Pistol Grip | Each |



860xxxx Jaws

Compatible with the following tools:

- Hilti NUN 54-22
- Nibco PC-10M Mini
- Rothenberger Compact
- Nibco PC-20M Mini
- Ridgid RP 115

May be compatible with other third-party tools.

861xxxx Jaws

Compatible with the following tools:

- Hilti NPR 32-22
- Ridgid RP330-C
- REMS 571011
- Hilti NPR 32 XL-22
- Ridgid RP340
- REMS 577010
- Nibco PC-280
- Milwaukee 2673-20
- REMS 572111
- Nibco PC-100
- Milwaukee 2673-20L
- REMS 571013
- Ridgid 320-E
- Milwaukee 2773-20
- REMS 571014
- Ridgid RP330-B
- Milwaukee 2773-20L
- Victaulic Vic-Press™ Tool - Style PFT510
- Ridgid CT400
- Milwaukee 2922-20

SPARE PARTS

| PART# | TYPE | UNIT |
|---------|--|-----------|
| 2700852 | Compression Ring for #2410500 - 1/2" | bag of 10 |
| 2700853 | Compression Ring for #2410625 - 5/8" | bag of 10 |
| 2700854 | Compression Ring for #2410750 - 3/4" | bag of 10 |
| 2701802 | SS Press Sleeve - 1/2" | Bag of 10 |
| 2701803 | SS Press Sleeve - 5/8" | Bag of 10 |
| 2701804 | SS Press Sleeve - 3/4" | Bag of 10 |
| 2701805 | SS Press Sleeve - 1" | Bag of 10 |
| 2708540 | O-Ring for Barb Insert 3/4" PAP Press Fitting | Each |
| 3240002 | On / Off Valve for 324 Series Manifolds | Box of 10 |
| 3240003 | On/Off valve w/balancing for 324 series manifolds G 1" x EK 25 | Box of 10 |
| 3250001 | Thermometer, 325XXXX & 332XXXX | Each |
| 3250002 | 1" BSP Manifold Connection X G 1-1/4" Union Flat Gasket | Each |
| 3250018 | Manifold Ball Valve Supply & Return Straight, w/ Thermometer | Set of 2 |
| 3320002 | 1-1/4" BSP Manifold Connection X G 1-1/4" Union Flat Gasket | Set of 2 |
| 3320018 | Manifold Ball Valve Supply & Return Straight, w/ Thermometer | Set of 2 |
| 3610005 | 1" BSP Pressure Test Kit | Each |
| 3740002 | Fill/Drain Valve - For Manifold Series 325XXXX & 332XXXX | Each |
| 3740011 | Manual Air Vent | Each |
| 3741172 | Flowmeter - For Manifold Series 325XXX & 332XXX | Each |
| 3741173 | Plastic Valve Cap-spare part | Each |
| 3741174 | On/Off Valve - For Manifold Series 325XXX and 332XXX | Each |
| 3741171 | 1-1/4" Manifold Bracket - For Manifold Series 325XXXX | Set of 2 |
| 3760001 | Union Connection For Manifold Series 326 | Set of 2 |
| 3760171 | Bracket For Manifold Series 326 | Each |
| 3761171 | 1-1/2" Manifold Bracket - For Manifold Series 332XXXX | Set of 2 |
| 3761172 | Inline Flowmeter | Each |
| 3761174 | Branch On/Off Valve | Each |

Spare Parts (cont.)

| PART# | TYPE | UNIT |
|---------|--|-----------|
| 3761175 | Flat Gasket 1-1/4" | Bag of 10 |
| 3761176 | Flat Gasket 1" | Bag of 10 |
| 3610002 | Basic End Cap for 1-1/4" Brass Manifold | Box of 2 |
| 3700184 | Pressure Test Kit for 1-1/2" Brass & Stainless Steel Manifolds | Each |
| 3711390 | O-RINGS for 1" BSP Manifold Transition | Each |
| 3721171 | Manifold Bracket for 1-1/4" 323 Series Stainless Steel Manifold | Each |
| 3721172 | Flowmeter Valve for 1-1/4" 323 Series Stainless Steel Manifold w/ Blue Plastic Cap | Each |
| 3750001 | Replacement EPDM Flat Gasket for 1-1/2" Stainless Steel Manifold Branch | Each |
| 3750002 | Replacement EPDM Flat Gasket for 1-1/2" Stainless Steel Manifold End | Each |
| 3810008 | Automatic Air Vent, Replacement Part, 1 Loop | Set of 2 |
| 3810009 | Composite Manifold Base Kit, Drain/Vent Module & Basic Cap | Set of 2 |
| 3810010 | Drain Valve for #3810009 | Set of 2 |
| 3810014 | Composite Manifold Isolation Ball-Valves | Set of 2 |
| 3810015 | Hose Connector for Drain Valve | Each |
| 3810016 | Composite Manifold Thermometer | Set of 2 |
| 3810170 | Composite Manifold Supply Valve | Each |
| 3810171 | Composite Manifold Bracket | Set of 2 |
| 3810172 | Composite Manifold Supply Flowmeter Valve | Each |
| 3810174 | Composite Manifold Return Valve | Each |
| 3811173 | Plastic Valve Cap for Composite Manifold | |
| 4700152 | Compression Ring for #4310500 | Bag of 10 |
| 4700153 | Compression Ring for #4310625 | Bag of 10 |
| 4700154 | Compression Ring for #4320750 | Bag of 10 |
| 4701770 | O-Ring for EK 20 Insert | Each |
| 4701780 | O-Ring for EK 25 Insert | Each |
| 4701790 | O-Ring for EK 32 Insert | Each |
| 5240748 | Strap On Pipe Thermometer with Spring | Box of 2 |
| 5700010 | Actuator Adapter Ring for #5120700 & 5120701 to Brass Manifolds | Each |
| 5700016 | Actuator Adapter Ring for #5120700 & 5120701 to Old Brass (M28 x 1.5) | Each |

Spare Parts (cont.)

| PART# | TYPE | UNIT |
|---------|--|----------|
| 5700017 | Actuator Adapter Ring for #5120700 & 5120701 to ICMA Manifold (M28 x 1.5) | Each |
| 5700026 | Adapter Ring for Series 323 Stainless Manifold | Each |
| 5700032 | Actuator Adapter Ring for #5120700 & 5120701 | Each |
| 5700033 | Actuator Adapter Ring for #5120700 & 5120701 (M28 x 1.5) | Each |
| 5700041 | Actuator Adapter Ring for #5120700 & 5120701 to Embassy Manifold | Each |
| 5700050 | Actuator Adapter Ring for #5120700 & 5120701 to Stainless Steel Manifold (M30 x 1.5) | Each |
| 5700064 | Actuator Adapter Ring for #5120700 & 5120701 to TruFLOW Manifolds | Each |
| 5700080 | Actuator Adapter Ring for #5120700 & 5120701 to Zone Valve Body (M30 x 1.5) | Each |
| 5700090 | Actuator Adapter Ring for #5120700 & 5120701 to MrPEX Composite Manifold | Each |
| 6114003 | Tube Sheild for #6114001 | Each |
| 6114004 | Cover for #6114002 | Each |
| 6114007 | Fasteners for #6114002 replacement part | Bag of 4 |

[illegible]

PRE-INSULATED PEX-a TUBING

Full coils are 328 feet . Shorter coil lengths are available with a \$100.00 net cut fee for 90mm, 140mm & 160mm outer jacket and \$200.00 for 200mm outer jacket. All freight on Pre-Insulated PEX Products will be added to invoice. No FFA allowance provided by MrPEX®. All Pre-Insulated Sales are final and returns are not allowed"



View pressure drop charts for Terrendis Pre-Insulated Metric PEX pipes

Pre-Insulated PEX-a Barrier Tubing

| PART# | TYPE | UNIT |
|---------|---------------------------------------|--------|
| 1510032 | 32mm PEX Single - 90mm Outer Jacket | Per Ft |
| 1510040 | 40mm PEX Single - 140mm Outer Jacket | Per Ft |
| 1510050 | 50mm PEX Single - 140mm Outer Jacket | Per Ft |
| 1510063 | 63mm PEX Single - 160mm Outer Jacket | Per Ft |
| 1510075 | 75mm PEX Single - 160mm Outer Jacket | Per Ft |
| 1510090 | 90mm PEX Single - 200mm Outer Jacket | Per Ft |
| 1510110 | 110mm PEX Single - 200mm Outer Jacket | Per Ft |
| 1520028 | 28mm PEX Double - 140mm Outer Jacket | Per Ft |
| 1520032 | 32mm PEX Double - 140mm Outer Jacket | Per Ft |
| 1520040 | 40mm PEX Double- 160mm Outer Jacket | Per Ft |
| 1520050 | 50mm PEX Double- 160mm Outer Jacket | Per Ft |
| 1520063 | 63mm PEX Double - 200mm Outer Jacket | Per Ft |

ASTM vs. Metric PEX Sizing

| METRIC PEX | OD | METRIC ID |
|------------|-------|-----------|
| 25mm | 0.984 | 0.806 |
| 32mm | 1.260 | 1.032 |
| 40mm | 1.573 | 1.305 |
| 50mm | 1.964 | 1.650 |
| 63mm | 2.484 | 2.122 |

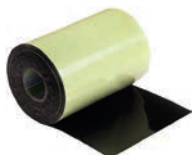
| ASTM PEX | OD | ASTM ID |
|----------|-------|---------|
| 3/4" | 0.875 | 0.681 |
| 1" | 1.125 | 0.875 |
| 1.25" | 1.375 | 1.069 |
| 1.5" | 1.625 | 1.263 |
| 2" | 2.125 | 1.653 |
| 2.5" | 2.625 | 2.041 |

Brass Transition Fittings (Heating Only)

| PART# | TYPE | UNIT |
|---------|-----------------------|------|
| 1503210 | 32mm PEX x 1" NPT | Each |
| 1504012 | 40mm PEX x 1 1/4" NPT | Each |
| 1505015 | 50mm PEX x 1 1/2" NPT | Each |
| 1506320 | 63mm PEX x 2" NPT | Each |
| 1507525 | 75mm PEX x 2 1/2" NPT | Each |
| 1509030 | 90mm PEX x 3" NPT | Each |
| 1501104 | 110mm PEX x 4" NPT | Each |



ACCESSORIES



Single Dust Cap

| PART# | TYPE | UNIT |
|---------|----------------------------------|------|
| 1500001 | 32mm (1") Single - 90mm OD | Each |
| 1500002 | 40mm (1 1/4") Single - 140mm OD | Each |
| 1500003 | 50mm (1 1/2") Single - 140mm OD | Each |
| 1500004 | 63mm (2") Single - 160mm OD | Each |
| 1500005 | 75mm (2 1/2") Single - 160mm OD | Each |
| 1500006 | 90mm (3") Single - 200mm OD | Each |
| 1500007 | 110mm (3 1/2") Single - 200mm OD | Each |

Double Dust Cap

| PART# | TYPE | UNIT |
|---------|---------------------------------|------|
| 1500008 | 32mm (1") Double - 140mm OD | Each |
| 1500009 | 40mm (1 1/4") Double - 160mm OD | Each |
| 1500010 | 50mm (1 1/2") Double - 160mm OD | Each |
| 1500011 | 63mm (2") Double - 200mm OD | Each |

Single Shrink Cap

| PART# | TYPE | UNIT |
|---------|---|------|
| 1500012 | 40-50mm (1 1/4" -1 1/2") Single - 140mm OD | Each |
| 1500013 | 63-75mm (2" -2 1/2") Single - 160mm OD | Each |
| 1500014 | 90-110mm (3"-4") Single - 200mm OD | Each |

Double Shrink Cap

| PART# | TYPE | UNIT |
|---------|---------------------------------|------|
| 1500015 | 32mm (1") Double - 140mm OD | Each |
| 1500016 | 40mm (1 1/4") Double - 160mm OD | Each |
| 1500017 | 50mm (1 1/2") Double - 160mm OD | Each |
| 1500018 | 63mm (2") Double - 200mm OD | Each |

Shrink Sleeve

| PART# | TYPE | UNIT |
|---------|-------------------------|------|
| 1500019 | 90mm Jacket 225mm long | Each |
| 1500020 | 140mm Jacket 225mm Long | Each |
| 1500021 | 200mm Jacket 225mm Long | Each |

Repair Tape

| PART# | TYPE | UNIT |
|---------|-----------------------|------|
| 1500023 | 150mm Wide x 10m Long | Each |

Wall Feed Through Assembly

| PART# | TYPE | UNIT |
|---------|--------------------------------------|------|
| 1500024 | Fits 75mm & 90mm Jacket 400mm Long | Each |
| 1500025 | Fits 110mm Jacket 400mm Long | Each |
| 1500026 | Fits 140mm & 160mm Jacket 400mm Long | Each |
| 1500027 | Fits 200mm Jacket 400mm Long | Each |



Straight Insulation Sleeve

| PART# | TYPE | UNIT |
|---------|-------------------------------------|------|
| 1500028 | 200mm Jacket 225mm x 1000mm Long | Each |
| 1500029 | 160mm Jacket 180mm x 1000mm Long | Each |
| 1500030 | 140mm Jacket 160mm x 850mm Long | Each |
| 1500031 | 110mm Jacket 125mm x 700mm Long | Each |
| 1500032 | 90mm/75mm Jacket 110mm x 700mm Long | Each |



T-Insulation Kit

| PART# | TYPE | UNIT |
|---------|--|------|
| 1500033 | T-Insulation Kit - Fits 225/200/160/140 Jacket Pipes | Each |
| 1500034 | T-Insulation Kit - Fits 140/110/90 Jacket Pipes | Each |
| 1500035 | L-Insulation Kit - Fits 225/200/160/140 Jacket Pipes | Each |



Underground Inspection Chamber

| PART# | TYPE | UNIT |
|---------|-----------------------------------|------|
| 1500036 | Fits 225/200/160/140 Jacket Pipes | Each |



Seal Chain Assembly

| PART# | TYPE | UNIT |
|---------|--------------------------------------|------|
| 1500037 | Fits 90mm Jacket 150mm Wall Opening | Each |
| 1500038 | Fits 110mm Jacket 150mm Wall Opening | Each |
| 1500039 | Fits 140mm Jacket 200mm Wall Opening | Each |
| 1500040 | Fits 160mm Jacket 250mm Wall Opening | Each |
| 1500041 | Fits 200mm Jacket 250mm Wall Opening | Each |



Pre-Insulated Cutting Charge

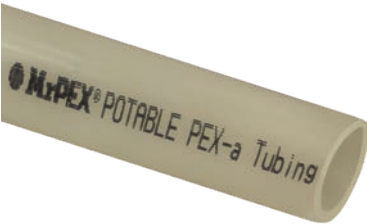
| PART# | TYPE | UNIT |
|---------|---------------------------------|------|
| 1510001 | On any length shorter than 328' | Each |

TUBING

MrPEX[®] POTABLE PEX-a TUBING

MrPEX[®] POTABLE PEX-a Tubing is Cross-Linked Polyethylene (PEX-a) manufactured in accordance with ASTM F 876. Tubing is listed to ASTM F 876/F877/F2023, ASTM E84 (CSA B137.5), cNSFus-pw, NSF/ANSI-61, NSF/ANSI-14, Annex G, NSF U.P.Code PEX 5106, ICC-PMG, ANSI/AWWA 904. MrPEX[®] POTABLE PEX-a tubing is rated by the Hydrostatic Stress Board of PPI (Plastics Pipe Institute) at: 160 psi at 73.4°F; 100 psi at 180°F. MrPEX[®] POTABLE PEX-a tubing may be used with fittings that are compliant with ASTM F1807/F1960/F2080/F2098/F2159 standards.

MrPEX[®] POTABLE PEX-a tubing is offered in coils and straight lengths of RED, NATURAL and BLUE colors to help identify hot and cold water supply.



NATURAL - MrPEX PEX-a POTABLE TUBING

| PART# | TYPE | UNIT |
|---------|--------|-------------------------------------|
| 1620010 | 1/2" | 100 ft. Coils |
| 1620030 | 1/2" | 300 ft. Coil |
| 1620050 | 1/2" | 500 ft. Coil |
| 1621040 | 1/2" | Bag of 20 - 400 ft. (20 ft. Sticks) |
| 1640010 | 3/4" | 100 ft. Coil |
| 1640030 | 3/4" | 300 ft. Coil |
| 1641020 | 3/4" | Bag of 10 - 200 ft. (20 ft. Sticks) |
| 1650010 | 1" | 100 ft. Coil |
| 1650030 | 1" | 300 ft. Coil |
| 1651010 | 1" | Bag of 5 - 100 ft. (20 ft. Sticks) |
| 1660010 | 1 1/4" | 100 ft. Coil |
| 1661010 | 1 1/4" | Bag of 5 - 100 ft. (20 ft. Sticks) |
| 1670010 | 1 1/2" | 100 ft. Coil |
| 1671010 | 1 1/2" | Bag of 5 - 100 ft. (20 ft. Sticks) |
| 1680010 | 2" | 100 ft. Coil |
| 1681010 | 2" | Bag of 5 - 100 ft. (20 ft. Sticks) |

RED - MrPEX POTABLE PEX-a TUBING

| PART# | TYPE | UNIT |
|---------|------|-------------------------------------|
| 1720010 | 1/2" | 100 ft. Coils |
| 1720030 | 1/2" | 300 ft. Coil |
| 1720050 | 1/2" | 500 ft. Coil |
| 1721040 | 1/2" | Bag of 20 - 400 ft. (20 ft. Sticks) |
| 1740010 | 3/4" | 100 ft. Coil |
| 1740030 | 3/4" | 300 ft. Coil |
| 1741020 | 3/4" | Bag of 10 - 200 ft. (20 ft. Sticks) |
| 1750010 | 1" | 100 ft. Coil |
| 1750030 | 1" | 300 ft. Coil |
| 1751010 | 1" | Bag of 5 - 100 ft. (20 ft. Sticks) |



BLUE - MrPEX POTABLE PEX-a TUBING

| PART# | TYPE | UNIT |
|---------|------|-------------------------------------|
| 1820010 | 1/2" | 100 ft. Coils |
| 1820030 | 1/2" | 300 ft. Coil |
| 1820050 | 1/2" | 500 ft. Coil |
| 1821040 | 1/2" | Bag of 20 - 400 ft. (20 ft. Sticks) |
| 1840010 | 3/4" | 100 ft. Coil |
| 1840030 | 3/4" | 300 ft. Coil |
| 1841020 | 3/4" | Bag of 10 - 200 ft. (20 ft. Sticks) |
| 1850010 | 1" | 100 ft. Coil |
| 1850030 | 1" | 300 ft. Coil |
| 1851010 | 1" | Bag of 5 - 100 ft. (20 ft. Sticks) |



////////////////////////////////////

MrPEX POTABLE PIPE-IN-PIPE PEX-a TUBING



**RED - Pipe-In-Pipe MrPEX PEX-a POTABLE TUBING
w/ Corrugated Outer Jacket**

| PART# | TYPE | UNIT |
|---------|------|--------------|
| 1970530 | 1/2" | 300 ft. Coil |
| 1970730 | 3/4" | 300 ft. Coil |
| 1970110 | 1" | 100ft Coil |



**BLUE - Pipe-In-Pipe MrPEX PEX-a POTABLE TUBING
w/ Corrugated Outer Jacket**

| PART# | TYPE | UNIT |
|---------|------|--------------|
| 1980530 | 1/2" | 300 ft. Coil |
| 1980730 | 3/4" | 300 ft. Coil |
| 1980110 | 1" | 100ft Coil |

////////////////////////////////////

MULTI-PORT TEES

COMPOSITE MULTI-PORT TEE'S, F2159 FITTINGS

MrPEX® Composite Multiport Tees are made from a blend of engineered high performance Polyphenylsulfone (PPSU) resin to achieve a long-term durable product. These PPSU fittings are durable, light weight, corrosion free, and resistant to chlorine and other substances that may be present in today's potable water supply. The Sulfone resin has been used and refined over the past 20 years and has proven a very reliable replacement for brass and copper fittings. MrPEX® multiport tees meet ASTM F2159. MrPEX Stainless Steel Press Sleeves and PEX Press tools are required and purchased separately.

Single Side - 3/4" PEX Inlet x Closed End x 1/2" PEX

| PART# | TYPE | UNIT |
|---------|------------|----------|
| 3011030 | 3 Branches | Bag of 5 |
| 3011040 | 4 Branches | Bag of 5 |
| 3011060 | 6 Branches | Bag of 5 |
| 3011080 | 8 Branches | Bag of 5 |



Single Side - 1" PEX Inlet x Closed End x 1/2" PEX

| PART# | TYPE | UNIT |
|---------|------------|----------|
| 3012060 | 6 Branches | Bag of 5 |
| 3012080 | 8 Branches | Bag of 5 |



Double Side - 1" PEX Inlet x Closed End x 1/2" PEX

| PART# | TYPE | UNIT |
|---------|--------------|----------|
| 3012330 | 3+3 Branches | Bag of 5 |
| 3012440 | 4+4 Branches | Bag of 5 |



Single Side - 3/4" PEX Inlet x 3/4" PEX End x 1/2" PEX

| PART# | TYPE | UNIT |
|---------|------------|----------|
| 3011031 | 3 Branches | Bag of 5 |
| 3011041 | 4 Branches | Bag of 5 |



Single Side - 1" PEX Inlet x 3/4" PEX End x 1/2" PEX

| PART# | TYPE | UNIT |
|---------|------------|----------|
| 3012031 | 3 Branches | Bag of 5 |
| 3012041 | 4 Branches | Bag of 5 |
| 3012061 | 6 Branches | Bag of 5 |
| 3012081 | 8 Branches | Bag of 5 |





Double Side - 3/4" PEX Inlet x 3/4" PEX End x 1/2" PEX

| PART# | TYPE | UNIT |
|---------|--------------|----------|
| 3011331 | 3+3 Branches | Bag of 5 |
| 3011441 | 4+4 Branches | Bag of 5 |



Double Side - 1" PEX Inlet x 3/4" PEX End x 1/2" PEX

| PART# | TYPE | UNIT |
|---------|--------------|----------|
| 3012331 | 3+3 Branches | Bag of 5 |
| 3012441 | 4+4 Branches | Bag of 5 |

COMPOSITE MULTI-PORT TEE'S, F1960 FITTINGS

Single Side - 3/4" PEX Inlet x 3/4" PEX End x 1/2" PEX

| PART# | TYPE | UNIT |
|---------|------------|----------|
| 3051021 | 2 Branches | Bag of 5 |
| 3051031 | 3 Branches | Bag of 5 |
| 3051041 | 4 Branches | Bag of 5 |



Single Side - 3/4" PEX Inlet x Closed End x 1/2" PEX

| PART# | TYPE | UNIT |
|---------|------------|----------|
| 3051030 | 3 Branches | Bag of 5 |
| 3051040 | 4 Branches | Bag of 5 |
| 3051060 | 6 Branches | Bag of 5 |



Single Side - 1" PEX Inlet x 1" PEX End x 1/2" PEX

| PART# | TYPE | UNIT |
|---------|------------|-----------|
| 3052042 | 4 Branches | Bag of 10 |
| 3052062 | 6 Branches | Bag of 10 |



Single Side - 1" PEX Inlet x 3/4" PEX End x 1/2" PEX

| PART# | TYPE | UNIT |
|---------|------------|-----------|
| 3052041 | 4 Branches | Bag of 10 |
| 3052061 | 6 Branches | Bag of 10 |



Single Side - 1" PEX Inlet x Closed End x 1/2" PEX

| PART# | TYPE | UNIT |
|---------|------------|-----------|
| 3052040 | 4 Branches | Bag of 10 |
| 3052060 | 6 Branches | Bag of 10 |



PPSU FITTINGS

F2159 PEX PRESS FITTINGS - PPSU

MrPEX® plastic fittings are made from a blend of engineered high performance PolyPhenylSulfone (PPSU) resin to achieve a long-term durable product. These PPSU fittings are durable, light weight, corrosion free, and resistant to chlorine and other substances that may be present in today's potable water supply. The Sulfone resin has been used and refined over the past 20 years and has proven a very reliable replacement for brass and copper fittings. MrPEX® fittings are listed to ASTM F2159. MrPEX® Stainless Steel Press Sleeves and PEX Press tools are required and purchased separately.



PEX Press Sleeves – Stainless Steel for F1807 & F2159

| PART# | TYPE | UNIT |
|---------|--------|------------|
| 4000500 | 1/2" | Bag of 100 |
| 4000750 | 3/4" | Bag of 50 |
| 4001000 | 1" | Bag of 50 |
| 4001250 | 1-1/4" | Bag of 10 |
| 4001500 | 1-1/2" | Bag of 10 |
| 4002000 | 2" | Bag of 10 |



F2159 PPSU – Couplings

| PART# | TYPE | UNIT |
|---------|---------------------|-----------|
| 4015050 | 1/2" PEX x 1/2" PEX | Bag of 25 |
| 4017550 | 3/4" PEX x 1/2" PEX | Bag of 25 |
| 4017575 | 3/4" PEX x 3/4" PEX | Bag of 25 |
| 4011010 | 1" PEX x 1" PEX | Bag of 10 |
| 4011075 | 1" PEX x 3/4" PEX | Bag of 10 |



F2159 PPSU – Threaded Adapter, Male

| PART# | TYPE | UNIT |
|---------|---------------------|-----------|
| 4025050 | 1/2" PEX x 1/2" NPT | Bag of 25 |
| 4025075 | 1/2" PEX x 3/4" NPT | Bag of 25 |
| 4027550 | 3/4" PEX x 1/2" NPT | Bag of 25 |
| 4027575 | 3/4" PEX x 3/4" NPT | Bag of 25 |
| 4021010 | 1" PEX x 1" NPT | Bag of 10 |

F2159 PPSU - Plug

| PART# | TYPE | UNIT |
|---------|----------|-----------|
| 4040500 | 1/2" PEX | Bag of 25 |
| 4040750 | 3/4" PEX | Bag of 25 |
| 4041000 | 1" PEX | Bag of 10 |



F2159 PPSU - Elbow

| PART# | TYPE | UNIT |
|---------|---------------------|-----------|
| 4065050 | 1/2" PEX x 1/2" PEX | Bag of 25 |
| 4067550 | 3/4" PEX x 1/2" PEX | Bag of 25 |
| 4067575 | 3/4" PEX x 3/4" PEX | Bag of 25 |
| 4061010 | 1" PEX x 1" PEX | Bag of 10 |



F2159 PPSU - Swivel Adapter

| PART# | TYPE | UNIT |
|---------|-------------------------------|-----------|
| 4075151 | 1/2" PEX x 1/2" NPT, Straight | Bag of 25 |
| 4075252 | 1/2" PEX x 1/2" NPT, Elbow | Bag of 25 |



F2159 PPSU - Tee

| PART# | TYPE | UNIT |
|---------|--------------------------------|-----------|
| 4095055 | 1/2" PEX x 1/2" PEX x 1/2" PEX | Bag of 25 |
| 4095057 | 1/2" PEX x 1/2" PEX x 3/4" PEX | Bag of 25 |
| 4097555 | 3/4" PEX x 1/2" PEX x 1/2" PEX | Bag of 25 |
| 4097557 | 3/4" PEX x 1/2" PEX x 3/4" PEX | Bag of 25 |
| 4097571 | 3/4" PEX x 3/4" PEX x 1" PEX | Bag of 10 |
| 4097575 | 3/4" PEX x 3/4" PEX x 1/2" PEX | Bag of 25 |
| 4097577 | 3/4" PEX x 3/4" PEX x 3/4" PEX | Bag of 25 |
| 4091011 | 1" PEX x 1" PEX x 1" PEX | Bag of 10 |
| 4091015 | 1" PEX x 1" PEX x 1/2" PEX | Bag of 10 |
| 4091017 | 1" PEX x 1" PEX x 3/4" PEX | Bag of 10 |
| 4091071 | 1" PEX x 3/4" PEX x 1" PEX | Bag of 10 |
| 4091077 | 1" PEX x 3/4" PEX x 3/4" PEX | Bag of 10 |



1st, 2nd, & 3rd
Measurements

F1960 PEX EXPANSION FITTINGS - PPSU

MrPEX® plastic fittings are made from a blend of engineered high performance PolyPhenylSulfone (PPSU) resin to achieve a long-term durable product. These PPSU fittings are durable, light weight, corrosion free, and resistant to chlorine and other substances that may be present in today's potable water supply. The Sulfone resin has been used and refined over the past 20 years and has proven a very reliable replacement for brass and copper fittings.



F1960 PEX Ring

| PART# | TYPE | UNIT |
|---------|------------|-----------|
| 4600500 | 1/2" PEX | Bag of 50 |
| 4600750 | 3/4" PEX | Bag of 25 |
| 4601000 | 1" PEX | Bag of 10 |
| 4601250 | 1 1/4" PEX | Bag of 10 |
| 4601500 | 1 1/2" PEX | Bag of 10 |
| 4602000 | 2" PEX | Bag of 10 |



F1960 PPSU - Coupling

| PART# | TYPE | UNIT |
|---------|-------------------------|-----------|
| 4615050 | 1/2" PEX x 1/2" PEX | Bag of 25 |
| 4617550 | 3/4" PEX x 1/2" PEX | Bag of 25 |
| 4617575 | 3/4" PEX x 3/4" PEX | Bag of 25 |
| 4611075 | 1" PEX x 3/4" PEX | Bag of 25 |
| 4611010 | 1" PEX x 1" PEX | Bag of 10 |
| 4611310 | 1 1/4" PEX x 1" PEX | Bag of 10 |
| 4611313 | 1 1/4" PEX x 1 1/4" PEX | Bag of 10 |
| 4611375 | 1 1/4" PEX x 3/4" PEX | Bag of 1 |
| 4611510 | 1 1/2" PEX x 1" PEX | Bag of 1 |
| 4611513 | 1 1/2" PEX x 1 1/4" PEX | Bag of 1 |
| 4611515 | 1 1/2" PEX x 1 1/2" PEX | Bag of 1 |
| 4611575 | 1 1/2" PEX x 3/4" PEX | Bag of 1 |
| 4612015 | 2" PEX x 1 1/2" PEX | Bag of 1 |
| 4612020 | 2" PEX x 2" PEX | Bag of 1 |

F1960 PPSU - Plug

| PART# | TYPE | UNIT |
|---------|------------|-----------|
| 4640500 | 1/2" PEX | Bag of 50 |
| 4640750 | 3/4" PEX | Bag of 25 |
| 4641000 | 1" PEX | Bag of 25 |
| 4641250 | 1 1/4" PEX | Bag of 25 |
| 4641500 | 1 1/2" PEX | Bag of 1 |
| 4642000 | 2" PEX | Bag of 1 |



F1960 PPSU - Elbow

| PART# | TYPE | UNIT |
|---------|-------------------------|-----------|
| 4665050 | 1/2" PEX x 1/2" PEX | Bag of 25 |
| 4667550 | 3/4" PEX x 1/2" PEX | Bag of 10 |
| 4667575 | 3/4" PEX x 3/4" PEX | Bag of 10 |
| 4661010 | 1" PEX x 1" PEX | Bag of 10 |
| 4661313 | 1 1/4" PEX x 1 1/4" PEX | Bag of 1 |
| 4661515 | 1 1/2" PEX x 1 1/2" PEX | Bag of 1 |
| 4662020 | 2" PEX x 2" PEX | Bag of 1 |





F1960 PPSU - Tee

| PART# | TYPE | UNIT |
|---------|--------------------------------------|-----------|
| 4695055 | 1/2" PEX x 1/2" PEX x 1/2" PEX | Bag of 25 |
| 4695057 | 1/2" PEX x 1/2" PEX x 3/4" PEX | Bag of 25 |
| 4697555 | 3/4" PEX x 1/2" PEX x 1/2" PEX | Bag of 10 |
| 4697557 | 3/4" PEX x 1/2" PEX x 3/4" PEX | Bag of 10 |
| 4697575 | 3/4" PEX x 3/4" PEX x 1/2" PEX | Bag of 10 |
| 4697577 | 3/4" PEX x 3/4" PEX x 3/4" PEX | Bag of 10 |
| 4691011 | 1" PEX x 1" PEX x 1" PEX | Bag of 10 |
| 4691015 | 1" PEX x 1" PEX x 1/2" PEX | Bag of 10 |
| 4691017 | 1" PEX x 1" PEX x 3/4" PEX | Bag of 10 |
| 4691071 | 1" PEX x 3/4" PEX x 1" PEX | Bag of 10 |
| 4691077 | 1" PEX x 3/4" PEX x 3/4" PEX | Bag of 10 |
| 4691311 | 1 1/4" PEX x 1" PEX x 1" PEX | Bag of 10 |
| 4691317 | 1 1/4" PEX x 1" PEX x 3/4" PEX | Bag of 10 |
| 4691331 | 1 1/4" PEX x 1 1/4" PEX x 1" PEX | Bag of 10 |
| 4691333 | 1 1/4" PEX x 1 1/4" PEX x 1 1/4" PEX | Bag of 10 |
| 4691335 | 1 1/4" PEX x 1 1/4" PEX x 1/2" PEX | Bag of 10 |
| 4691337 | 1 1/4" PEX x 1 1/4" PEX x 3/4" PEX | Bag of 10 |
| 4691511 | 1 1/2" PEX x 1" PEX x 1" PEX | Bag of 1 |
| 4691517 | 1 1/2" PEX x 1" PEX x 3/4" PEX | Bag of 1 |
| 4691518 | 1 1/2" PEX x 1" PEX x 1 1/2" PEX | Bag of 1 |
| 4691531 | 1 1/2" PEX x 1 1/4" PEX x 1" PEX | Bag of 1 |
| 4691533 | 1 1/2" PEX x 1 1/4" PEX x 1 1/4" PEX | Bag of 1 |
| 4691537 | 1 1/2" PEX x 1 1/4" PEX x 3/4" PEX | Bag of 1 |
| 4691581 | 1 1/2" PEX x 1 1/2" PEX x 1" PEX | Bag of 1 |
| 4691583 | 1 1/2" PEX x 1 1/2" PEX x 1 1/4" PEX | Bag of 1 |
| 4691585 | 1 1/2" PEX x 1 1/2" PEX x 1/2" | Bag of 1 |
| 4691587 | 1 1/2" PEX x 1 1/2" PEX x 3/4" PEX | Bag of 1 |
| 4691588 | 1 1/2" PEX x 1 1/2" PEX x 1 1/2" PEX | Bag of 1 |
| 4692021 | 2" PEX x 2" PEX x 1" PEX | Bag of 1 |
| 4692022 | 2" PEX x 2" PEX x 2" PEX | Bag of 1 |
| 4692023 | 2" PEX x 2" PEX x 1 1/4" PEX | Bag of 1 |
| 4692025 | 2" PEX x 2" PEX x 1/2" PEX | Bag of 1 |
| 4692027 | 2" PEX x 2" PEX x 3/4" PEX | Bag of 1 |
| 4692028 | 2" PEX x 2" PEX x 1 1/2" PEX | Bag of 1 |
| 4692081 | 2" PEX x 1 1/2" PEX x 1" PEX | Bag of 1 |
| 4692082 | 2" PEX x 1 1/2" PEX x 2" PEX | Bag of 1 |
| 4692083 | 2" PEX x 1 1/2" PEX x 1 1/4" PEX | Bag of 1 |
| 4692087 | 2" PEX x 1 1/2" PEX x 3/4" PEX | Bag of 1 |
| 4692088 | 2" PEX x 1 1/2" PEX x 1 1/2" PEX | Bag of 1 |

LF BRASS FITTINGS

F1807 PEX PRESS FITTINGS - LF BRASS

MrPEX® Lead Free Brass fittings comply with NSF 61, which allows the product to contain no more than 0.25% lead. These fittings meet F1807. MrPEX Stainless Steel Press Sleeves and PEX Press tools are required and purchased separately.

PEX Press Sleeves - Stainless Steel for F1807 & F2159

| PART# | TYPE | UNIT |
|---------|--------|------------|
| 4000500 | 1/2" | Bag of 100 |
| 4000750 | 3/4" | Bag of 50 |
| 4001000 | 1" | Bag of 50 |
| 4001250 | 1-1/4" | Bag of 10 |
| 4001500 | 1-1/2" | Bag of 10 |
| 4002000 | 2" | Bag of 10 |



F1807 LF Brass - Coupling

| PART# | TYPE | UNIT |
|---------|-------------------------|-----------|
| 4115050 | 1/2" PEX x 1/2" PEX | Bag of 25 |
| 4117550 | 3/4" PEX x 1/2" PEX | Bag of 25 |
| 4117575 | 3/4" PEX x 3/4" PEX | Bag of 25 |
| 4111010 | 1" PEX x 1" PEX | Bag of 10 |
| 4111075 | 1" PEX x 3/4" PEX | Bag of 10 |
| 4111310 | 1-1/4" PEX x 1" PEX | Bag of 5 |
| 4111313 | 1-1/4" PEX x 1-1/4" PEX | Bag of 5 |
| 4111510 | 1-1/2" PEX x 1" PEX | Bag of 5 |
| 4111513 | 1-1/2" PEX x 1-1/4" PEX | Bag of 5 |
| 4111515 | 1-1/2" PEX x 1-1/2" PEX | Bag of 5 |
| 4112013 | 2" PEX x 1-1/4" PEX | Bag of 5 |
| 4112015 | 2" PEX x 1-1/2" PEX | Bag of 5 |
| 4112020 | 2" PEX x 2" PEX | Bag of 5 |



F1807 LF Brass - Threaded Adapter, Male

| PART# | TYPE | UNIT |
|---------|-------------------------|-----------|
| 4125050 | 1/2" PEX x 1/2" NPT | Bag of 25 |
| 4125075 | 1/2" PEX x 3/4" NPT | Bag of 25 |
| 4127510 | 3/4" PEX x 1" NPT | Bag of 10 |
| 4127575 | 3/4" PEX x 3/4" NPT | Bag of 25 |
| 4121010 | 1" PEX x 1" NPT | Bag of 10 |
| 4121075 | 1" PEX x 3/4" NPT | Bag of 10 |
| 4121313 | 1-1/4" PEX x 1-1/4" NPT | Bag of 5 |
| 4121515 | 1-1/2" PEX x 1-1/2" NPT | Bag of 5 |
| 4122020 | 2" PEX x 2" NPT | Bag of 5 |





F1807 LF Brass - Plug

| PART# | TYPE | UNIT |
|---------|-------------------------|-----------|
| 4100500 | 1/2" PEX | Bag of 25 |
| 4100750 | 3/4" PEX | Bag of 25 |
| 4101000 | 1" PEX | Bag of 10 |
| 4101250 | 1-1/4" PEX x 1-1/4" NPT | Bag of 5 |
| 4101500 | 1-1/2" PEX x 1-1/2" NPT | Bag of 5 |
| 4102000 | 2" PEX x 2" NPT | Bag of 5 |



F1807 LF Brass - Threaded Adapter, Female

| PART# | TYPE | UNIT |
|---------|-------------------------|-----------|
| 4135050 | 1/2" PEX x 1/2" NPT | Bag of 25 |
| 4135075 | 1/2" PEX x 3/4" NPT | Bag of 25 |
| 4137510 | 3/4" PEX x 1" NPT | Bag of 10 |
| 4137575 | 3/4" PEX x 3/4" NPT | Bag of 25 |
| 4131010 | 1" PEX x 1" NPT | Bag of 10 |
| 4131313 | 1-1/4" PEX x 1-1/4" NPT | Bag of 5 |
| 4131515 | 1-1/2" PEX x 1-1/2" NPT | Bag of 5 |
| 4132020 | 2" PEX x 2" NPT | Bag of 5 |



F1807 LF Brass - Sweat Adapter, Male

| PART# | TYPE | UNIT |
|---------|------------------------|-----------|
| 4145050 | 1/2" PEX x 1/2" CU | Bag of 25 |
| 4145075 | 1/2" PEX x 3/4" CU | Bag of 25 |
| 4147510 | 3/4" PEX x 1" CU | Bag of 10 |
| 4147575 | 3/4" PEX x 3/4" CU | Bag of 25 |
| 4141010 | 1" PEX x 1" CU | Bag of 10 |
| 4141313 | 1-1/4" PEX x 1-1/4" CU | Bag of 5 |
| 4141515 | 1-1/2" PEX x 1-1/2" CU | Bag of 5 |
| 4142020 | 2" PEX x 2" CU | Bag of 5 |



F1807 LF Brass - Sweat Adapter, Female

| PART# | TYPE | UNIT |
|---------|------------------------|-----------|
| 4155050 | 1/2" PEX x 1/2" CU | Bag of 25 |
| 4155075 | 1/2" PEX x 3/4" CU | Bag of 25 |
| 4157510 | 3/4" PEX x 1" CU | Bag of 10 |
| 4157575 | 3/4" PEX x 3/4" CU | Bag of 25 |
| 4151010 | 1" PEX x 1" CU | Bag of 10 |
| 4151313 | 1-1/4" PEX x 1-1/4" CU | Bag of 5 |
| 4151515 | 1-1/2" PEX x 1-1/2" CU | Bag of 5 |
| 4152020 | 2" PEX x 2" CU | Bag of 5 |

F1807 LF Brass - Elbow

| PART# | TYPE | UNIT |
|---------|-------------------------|-----------|
| 4165050 | 1/2" PEX x 1/2" PEX | Bag of 25 |
| 4167575 | 3/4" PEX x 3/4" PEX | Bag of 25 |
| 4161010 | 1" PEX x 1" PEX | Bag of 10 |
| 4161313 | 1-1/4" PEX x 1-1/4" PEX | Bag of 5 |
| 4161515 | 1-1/2" PEX x 1-1/2" PEX | Bag of 5 |
| 4162020 | 2" PEX x 2" PEX | Bag of 5 |



F1807 LF Brass - Threaded Elbow, Male

| PART# | TYPE | UNIT |
|---------|---------------------|-----------|
| 4170055 | 1/2" PEX x 1/2" NPT | Bag of 25 |
| 4170057 | 1/2" PEX x 3/4" NPT | Bag of 25 |
| 4170071 | 3/4" PEX x 1" NPT | Bag of 10 |
| 4170077 | 3/4" PEX x 3/4" NPT | Bag of 25 |



F1807 LF Brass - Sweat Elbow, Male

| PART# | TYPE | UNIT |
|---------|--------------------|-----------|
| 4180055 | 1/2" PEX x 1/2" CU | Bag of 25 |
| 4180057 | 1/2" PEX x 3/4" CU | Bag of 25 |
| 4180077 | 3/4" PEX x 3/4" CU | Bag of 25 |



1807 LF Brass - Sweat Elbow, Female

| PART# | TYPE | UNIT |
|---------|--------------------|-----------|
| 4180155 | 1/2" PEX x 1/2" CU | Bag of 25 |
| 4180157 | 1/2" PEX x 3/4" CU | Bag of 25 |
| 4180177 | 3/4" PEX x 3/4" CU | Bag of 25 |
| 4180111 | 1" PEX x 1" CU | Bag of 10 |



F1807 LF Brass - Drop Ear Elbow

| PART# | TYPE | UNIT |
|---------|---------------------|-----------|
| 4100055 | 1/2" PEX x 1/2" FIP | Bag of 10 |
| 4100077 | 3/4" PEX x 3/4" FIP | Bag of 10 |
| 4100157 | 1/2" PEX x 3/4" FIP | Bag of 10 |





1st, 2nd, & 3rd
Measurements

F1807 LF Brass - Tee

| PART# | TYPE | UNIT |
|---------|--------------------------------------|-----------|
| 4195055 | 1/2" PEX x 1/2" PEX x 1/2" PEX | Bag of 25 |
| 4195057 | 1/2" PEX x 1/2" PEX x 3/4" PEX | Bag of 25 |
| 4197555 | 3/4" PEX x 1/2" PEX x 1/2" PEX | Bag of 25 |
| 4197557 | 3/4" PEX x 1/2" PEX x 3/4" PEX | Bag of 25 |
| 4197575 | 3/4" PEX x 3/4" PEX x 1/2" PEX | Bag of 25 |
| 4197577 | 3/4" PEX x 3/4" PEX x 3/4" PEX | Bag of 25 |
| 4191011 | 1" PEX x 1" PEX x 1" PEX | Bag of 10 |
| 4191015 | 1" PEX x 1" PEX x 1/2" PEX | Bag of 10 |
| 4191017 | 1" PEX x 1" PEX x 3/4" PEX | Bag of 10 |
| 4191051 | 1" PEX x 1/2" PEX x 1" PEX | Bag of 10 |
| 4191057 | 1" PEX x 1/2" PEX x 3/4" PEX | Bag of 10 |
| 4191071 | 1" PEX x 3/4" PEX x 1" PEX | Bag of 10 |
| 4191077 | 1" PEX x 3/4" PEX x 3/4" PEX | Bag of 10 |
| 4191311 | 1-1/4" PEX x 1" PEX x 1" PEX | Bag of 5 |
| 4191317 | 1-1/4" PEX x 1" PEX x 3/4" PEX | Bag of 5 |
| 4191331 | 1-1/4" PEX x 1-1/4" PEX x 1" PEX | Bag of 5 |
| 4191333 | 1-1/4" PEX x 1-1/4" PEX x 1-1/4" PEX | Bag of 5 |
| 4191335 | 1-1/4" PEX x 1-1/4" PEX x 1/2" PEX | Bag of 5 |
| 4191337 | 1-1/4" PEX x 1-1/4" PEX x 3/4" PEX | Bag of 5 |
| 4191511 | 1-1/2" PEX x 1" PEX x 1" PEX | Bag of 5 |
| 4191533 | 1-1/2" PEX x 1-1/4" PEX x 1-1/4" PEX | Bag of 5 |
| 4191537 | 1-1/2" PEX x 1-1/4" PEX x 3/4" PEX | Bag of 5 |
| 4191577 | 1-1/2" PEX x 3/4" PEX x 3/4" PEX | Bag of 5 |
| 4191581 | 1-1/2" PEX x 1-1/2" PEX x 1" PEX | Bag of 5 |
| 4191583 | 1-1/2" PEX x 1-1/2" PEX x 1-1/4" PEX | Bag of 5 |
| 4191587 | 1-1/2" PEX x 1-1/2" PEX x 3/4" PEX | Bag of 5 |
| 4191588 | 1-1/2" PEX x 1-1/2" PEX x 1-1/2" PEX | Bag of 5 |
| 4192021 | 2" PEX x 2" PEX x 1" PEX | Bag of 5 |
| 4192022 | 2" PEX x 2" PEX x 2" PEX | Bag of 5 |
| 4192023 | 2" PEX x 2" PEX x 1-1/4" PEX | Bag of 5 |
| 4192027 | 2" PEX x 2" PEX x 3/4" PEX | Bag of 5 |
| 4192028 | 2" PEX x 2" PEX x 1-1/2" PEX | Bag of 5 |
| 4192033 | 2" PEX x 1-1/4" PEX x 1-1/4" PEX | Bag of 5 |
| 4192081 | 2" PEX x 1-1/2" PEX x 1" PEX | Bag of 5 |
| 4192083 | 2" PEX x 1-1/2" PEX x 1-1/4" PEX | Bag of 5 |
| 4192087 | 2" PEX x 1-1/2" PEX x 3/4" PEX | Bag of 5 |
| 4192088 | 2" PEX x 1-1/2" PEX x 1-1/2" PEX | Bag of 5 |

F1960 PEX EXPANSION FITTINGS - LF BRASS

MrPEX® Lead Free Brass fittings comply with NSF 61, which allows the product to contain no more than 0.25% lead.

F1960 PEX Ring

| PART# | TYPE | UNIT |
|---------|------------|-----------|
| 4600500 | 1/2" PEX | Bag of 50 |
| 4600750 | 3/4" PEX | Bag of 25 |
| 4601000 | 1" PEX | Bag of 10 |
| 4601250 | 1 1/4" PEX | Bag of 10 |
| 4601500 | 1 1/2" PEX | Bag of 10 |
| 4602000 | 2" PEX | Bag of 10 |



F1960 LF Brass - Coupling

| PART# | TYPE | UNIT |
|---------|---------------------|-----------|
| 4815050 | 1/2" PEX x 1/2" PEX | Bag of 50 |
| 4817550 | 3/4" PEX x 1/2" PEX | Bag of 50 |
| 4817575 | 3/4" PEX x 3/4" PEX | Bag of 25 |
| 4811010 | 1" PEX x 1" PEX | Bag of 25 |
| 4811075 | 1" PEX x 3/4" PEX | Bag of 25 |



F1960 LF Brass - Threaded Adapter, Male

| PART# | TYPE | UNIT |
|---------|-------------------------|-----------|
| 4825050 | 1/2" PEX x 1/2" NPT | Bag of 25 |
| 4825075 | 1/2" PEX x 3/4" NPT | Bag of 25 |
| 4827510 | 3/4" x 1" NPT | Bag of 25 |
| 4827550 | 3/4" x 1/2" NPT | Bag of 25 |
| 4827575 | 3/4" x 3/4" NPT | Bag of 25 |
| 4821010 | 1" x 1" NPT | Bag of 25 |
| 4821075 | 1" x 3/4" NPT | Bag of 25 |
| 4821313 | 1-1/4" PEX x 1-1/4" NPT | Bag of 10 |
| 4821515 | 1-1/2" PEX x 1-1/2" NPT | Bag of 10 |
| 4822020 | 2" PEX x 2" NPT | Bag of 5 |



F1960 LF Brass - Threaded Adapter, Female

| PART# | TYPE | UNIT |
|---------|--------------------------|-----------|
| 4835050 | 1/2" PEX x 1/2" NPT | Bag of 25 |
| 4835075 | 1/2" PEX x 3/4" NPT | Bag of 25 |
| 4837550 | 3/4" PEX x 1/2" NPT | Bag of 25 |
| 4837575 | 3/4" PEX x 3/4" NPT | Bag of 25 |
| 4831010 | 1" PEX x 1" NPT | Bag of 25 |
| 4831313 | 1-1/4" PEX x 1-1/4" NPT | Bag of 10 |
| 4831515 | 1"-1/2" PEX x 1-1/2" NPT | Bag of 10 |
| 4832020 | 2" PEX x 2" NPT | Bag of 5 |





F1960 LF Brass - Plug

| PART# | TYPE | UNIT |
|---------|----------|------------|
| 4840500 | 1/2" PEX | Bag of 100 |
| 4840750 | 3/4" PEX | Bag of 50 |
| 4841000 | 1" PEX | Bag of 50 |



F1960 LF Brass - Sweat Adapter Male

| PART# | TYPE | UNIT |
|---------|------------------------|-----------|
| 4845050 | 1/2" PEX x 1/2" CU | Bag of 50 |
| 4845075 | 1/2" PEX x 3/4" CU | Bag of 25 |
| 4847550 | 3/4" PEX x 1/2" CU | Bag of 25 |
| 4847575 | 3/4" PEX x 3/4" CU | Bag of 25 |
| 4841010 | 1" PEX x 1" CU | Bag of 25 |
| 4841313 | 1-1/4" PEX x 1-1/4" CU | Bag of 15 |
| 4841515 | 1-1/2" PEX x 1-1/2" CU | Bag of 10 |
| 4842020 | 2" PEX x 2" CU | Bag of 5 |



F1960 LF Brass - Threaded Elbow, Female

| PART# | TYPE | UNIT |
|---------|--------------------------|-----------|
| 4875051 | 1/2" PEX x 1/2" Drop Ear | Bag of 25 |



F1960 LF Brass - Sweat Adapter Female

| PART# | TYPE | UNIT |
|---------|------------------------|-----------|
| 4855050 | 1/2" PEX x 1/2" CU | Bag of 50 |
| 4855075 | 1/2" PEX x 3/4" CU | Bag of 25 |
| 4857575 | 3/4" PEX x 3/4" CU | Bag of 25 |
| 4851010 | 1" PEX x 1" CU | Bag of 25 |
| 4851313 | 1-1/4" PEX x 1-1/4" CU | Bag of 10 |
| 4851515 | 1-1/2" PEX x 1-1/2" CU | Bag of 5 |
| 4852020 | 2" PEX x 2" CU | Bag of 5 |



F1960 LF Brass - Elbow

| PART# | TYPE | UNIT |
|---------|---------------------|-----------|
| 4865050 | 1/2" PEX x 1/2" PEX | Bag of 50 |
| 4867550 | 3/4" PEX x 1/2" PEX | Bag of 25 |
| 4867575 | 3/4" PEX x 3/4" PEX | Bag of 25 |
| 4861010 | 1" PEX x 1" PEX | Bag of 25 |
| 4861075 | 1" PEX x 3/4" PEX | Bag of 25 |



F1960 LF Brass - Threaded Elbow, Male

| PART# | TYPE | UNIT |
|---------|---------------------|-----------|
| 4875050 | 1/2" PEX x 1/2" NPT | Bag of 25 |
| 4877550 | 1/2" PEX x 3/4" NPT | Bag of 25 |
| 4877575 | 3/4" PEX x 3/4" NPT | Bag of 25 |

1960 LF Brass - Tee

| PART# | TYPE | UNIT |
|---------|--------------------------------|-----------|
| 4895055 | 1/2" PEX x 1/2" PEX x 1/2" PEX | Bag of 50 |
| 4895057 | 1/2" PEX x 1/2" PEX x 3/4" PEX | Bag of 25 |
| 4897555 | 3/4" PEX x 1/2" PEX x 1/2" PEX | Bag of 25 |
| 4897557 | 3/4" PEX x 1/2" PEX x 3/4" PEX | Bag of 25 |
| 4897571 | 3/4" PEX x 3/4" PEX x 1" PEX | Bag of 25 |
| 4897575 | 3/4" PEX x 3/4" PEX x 1/2" PEX | Bag of 25 |
| 4897577 | 3/4" PEX x 3/4" PEX x 3/4" PEX | Bag of 25 |
| 4891011 | 1" PEX x 1" PEX x 1" PEX | Bag of 10 |
| 4891015 | 1" PEX x 1" PEX x 1/2" PEX | Bag of 25 |
| 4891017 | 1" PEX x 1" PEX x 3/4" PEX | Bag of 25 |
| 4891051 | 1" PEX x 1/2" PEX x 1" PEX | Bag of 25 |
| 4891057 | 1" PEX x 1/2" PEX x 3/4" PEX | Bag of 25 |
| 4891071 | 1" PEX x 3/4" PEX x 1" PEX | Bag of 25 |
| 4891075 | 1" PEX x 3/4" PEX x 1/2" PEX | Bag of 25 |
| 4891077 | 1" PEX x 3/4" PEX x 3/4" PEX | Bag of 25 |



PLUMBING TOOLS

INSTALLATION TOOLS

MrPEX® Installation Tools features tube handling tools for PEX as well as prep and press fitting tools.



Compact Adjustable Tubing Uncoiler

| PART# | TYPE | UNIT |
|---------|------------|------|
| 8110720 | Heavy Duty | Each |



Pipe Cutter

| PART# | TYPE | UNIT |
|---------|--------------------------------------|------|
| 8120878 | For All Sizes Up to 1 1/4" PEX & PAP | Each |



Simple Cutter

| PART# | TYPE | UNIT |
|---------|----------------------|------|
| 8120879 | For 3/8" – 1" Tubing | Each |

Feed Eye with bracket for PEX Tubing

| PART# | TYPE | UNIT |
|---------|--------------------------------------|------|
| 8110722 | For All Sizes Up to 1 1/4" PEX & PAP | Each |



Manual Press Tool for PEX (F1807 & F2159)

| PART# | TYPE | UNIT |
|---------|------------------------------|------|
| 8400500 | 1/2" Stainless Steel Sleeves | Each |
| 8400750 | 3/4" Stainless Steel Sleeves | Each |
| 8401000 | 1" Stainless Steel Sleeves | Each |



Manual Press Tool for PEX (F1807 & F2159), Compact

| PART# | TYPE | UNIT |
|---------|------------------------------|------|
| 8401050 | 1/2" Stainless Steel Sleeves | Each |
| 8401075 | 3/4" Stainless Steel Sleeves | Each |



Manual PEX Expander Tool Kit (F1960)

| PART# | TYPE | UNIT |
|---------|--|------|
| 8500001 | Manual F1960 PEX Expander Tool Kit – 1/2, 3/4, 1 | Each |

PEX Expander Heads (F1960)

| PART# | TYPE | UNIT |
|---------|------|------|
| 8500500 | 1/2" | Each |
| 8500750 | 3/4" | Each |
| 8501000 | 1" | Each |

Jaw for ASTM F1807 PEX Press Battery Tools

| PART# | TYPE | UNIT |
|---------|-------------------------|------|
| 8600500 | 1/2" | Each |
| 8600750 | 3/4" | Each |
| 8601000 | 1" | Each |
| 8601250 | 1-1/4" | Each |
| 8601500 | 1-1/2" | Each |
| 8610500 | 1/2 " with Pistol Grip | Each |
| 8610750 | 3/4" with Pistol Grip | Each |
| 8611000 | 1" with Pistol Grip | Each |
| 8611250 | 1-1/4" with Pistol Grip | Each |
| 8611500 | 1-1/2" with Pistol Grip | Each |
| 8612000 | 2" with Pistol Grip | Each |



860xxxx Jaws

Compatible with the following tools:

- Hilti NUN 54-22
- Nibco PC-10M Mini
- Rothenberger Compact
- Nibco PC-20M Mini
- Ridgid RP 115

May be compatible with other third-party tools.

861xxxx Jaws

Compatible with the following tools:

- Hilti NPR 32-22
- Ridgid RP330-C
- REMS 571011
- Hilti NPR 32 XL-22
- Ridgid RP340
- REMS 577010
- Nibco PC-280
- Milwaukee 2673-20
- REMS 572111
- Nibco PC-100
- Milwaukee 2673-20L
- REMS 571013
- Ridgid 320-E
- Milwaukee 2773-20
- REMS 571014
- Ridgid RP330-B
- Milwaukee 2773-20L
- Victaulic Vic-Press™ Tool - Style PFT510
- Ridgid CT400
- Milwaukee 2922-20

LOOP CAD

MrPEX® is pre-loaded in LoopCAD®

MrPEX's radiant heating and snow melt systems are now available preloaded in LoopCAD. Not only can you design your circuit layouts, perform load calculations, and generate all hydronic data, you can also generate a complete materials list and quotation based on MrPEX's detailed product

information. The MrPEX® design recommendations and data are also built in to the Add-on for you.

Below you can download LoopCAD with the MrPEX® Add-on already preloaded. Initially this will be in trial mode, giving you 30-days to evaluate the software for free. If you are downloading this as an update and you have already entered an Activation Code, the program automatically switch to the full version for you.

Download of this release is available at: www.LoopCAD.com/mrpex

For additional MrPEX® information go to www.mrpexsystems.com.



General Terms and Conditions

These terms and conditions apply to all MrPEX® products. All customers are subject to credit approval before shipment of product.

Price Changes

MrPEX® reserves the right to change published prices and product availability without prior notification. Our policy is a minimum notification period of 30 days, but under unusual circumstances it may become necessary to shorten this period to meet market needs.

Terms

Terms are 30 days Net or per separate agreement with individual customer.

Minimum Order Quantity

The minimum order is \$300.00 net price. For orders less than \$300.00 net, an order processing charge of \$15.00 will be applied.

Finance Charge

A finance charge of one and one half percent (1.5%) per month will be charged on all overdue balances. This corresponds to an eighteen percent (18%) annual percentage rate (APR).

Taxes

We are required by law to charge applicable state and local taxes unless a sales tax exemption certificate has been provided.

Shipping

We will ship orders received as soon as possible. We will try to communicate regarding possible back-orders. Back-orders will be billed separately. Note that items may sometimes be shipped from separate locations. Orders will ship from closest warehouse location only when ordered products are available from there.

Freight Claims, Shortages

If material is received short or damaged, the receiver must require the agent of the transport company to make a notation of delivery condition on the freight bill. If, or when, the goods is arrival inspected and it is found to have a damage likely caused by the freight company, the receiver must report the claim to MrPEX® Systems. We must receive such a claim within 48 hours of the receipt of goods.



mrpexsystems.com

Corporate Office

📍 14799 Jackal Street NW, Suite 100
Ramsey, MN 55303
☎ (800) 716-3406
✉ sales@mrpexsystems.com
✉ support@mrpexsystems.com

Order Department

Order by phone or email
☎ (800) 716-3406
✉ order@mrpexsystems.com